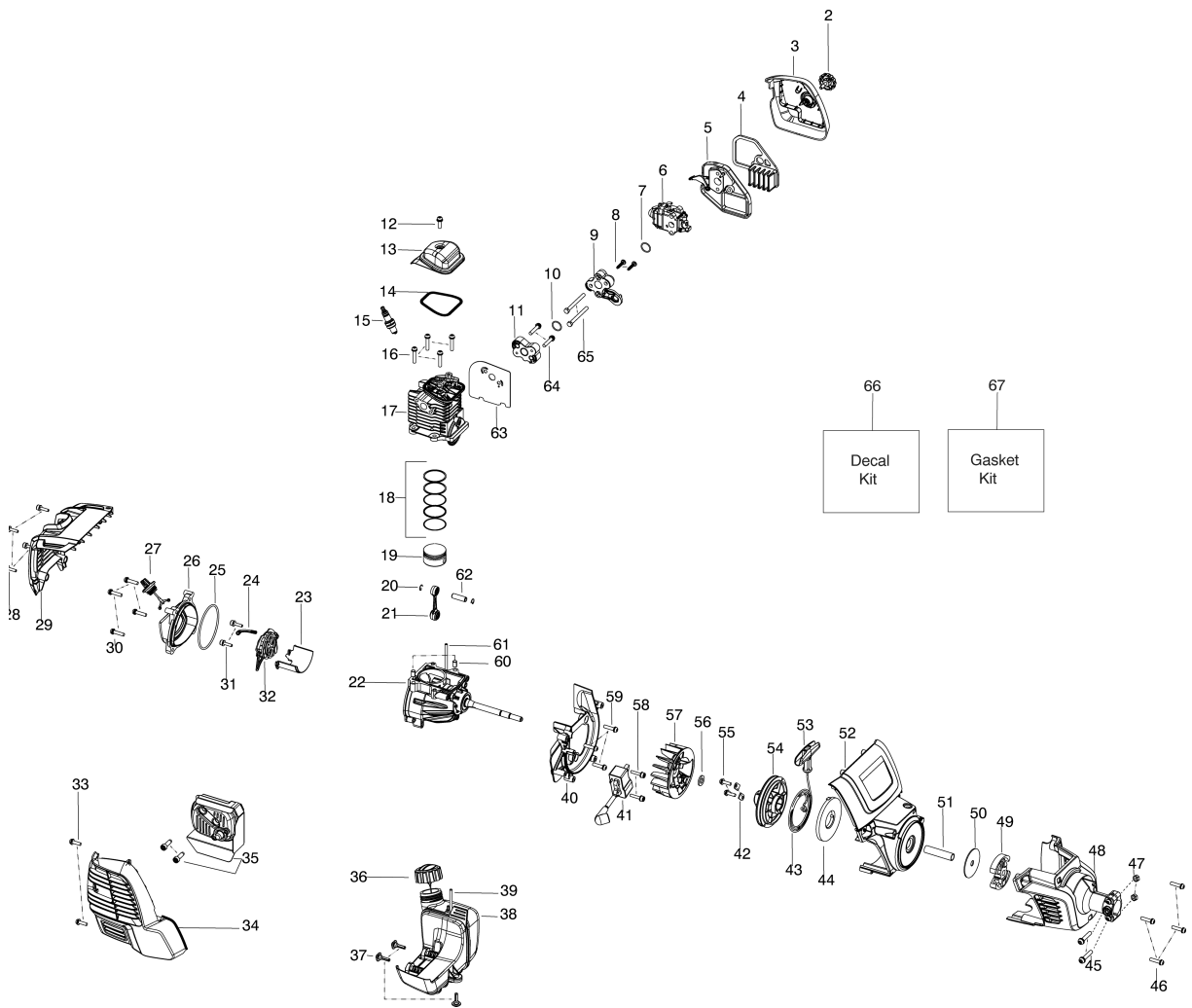




# SPARE PARTS LIST

TRIMMERS/EDGERS

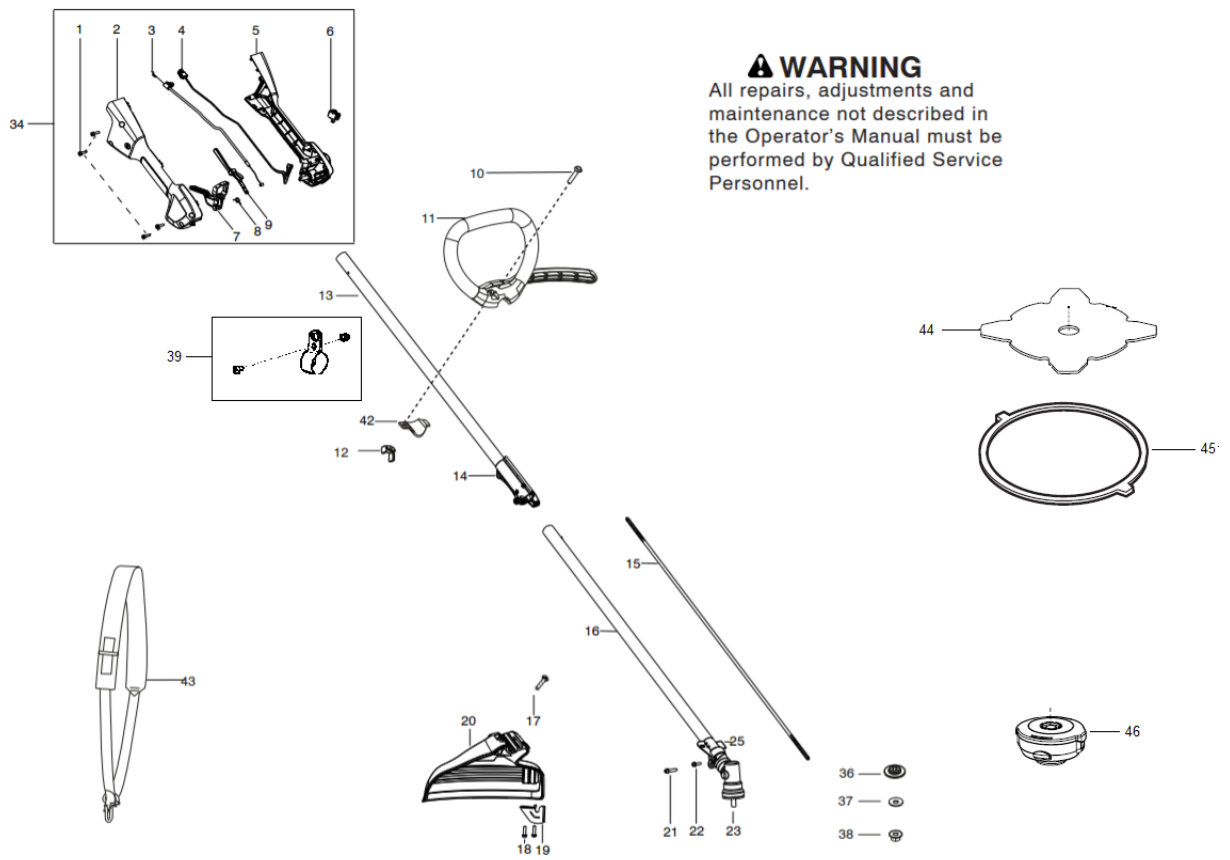
B428PS, 967622201, 2019-01



## ENGINE

B428PS, 967622201, 2019-01

Ref	Part No	Description	Remark	QTY KIT
2	576 37 50-01	ASSEMBLY	airbox knob	1
3	579 62 93-01	KIT	airbox cover incl. 2	1
4	575 74 06-01	FILTER		1
5	579 16 17-01	BASEPLATE		1
6	578 98 21-01	CARBURETTOR	w/bulb	1
7	578 95 19-01	O-RING	1.5x14.5mm	1
8	530 01 64-24	SCREW M4.25-2.5X18 B		2
9	579 65 06-01	KIT	"Incl. 8,65"	1
10	578 95 19-01	O-RING	1.5x14.5mm	1
11	579 65 05-01	KIT	Incl. 64	1
12	575 96 24-01	SCREW	w/copper washer	1
13	574 83 16-01	COVER		1
14	577 82 18-01	SEAL		1
15	545 23 60-01	SPARK PLUG		1
16	575 95 31-01	SCREW	m5-0.8x25mm	4
17	579 62 86-01	KIT	cylinder	1
18	579 62 90-01	KIT	piston ring	1
19	585 98 97-01	PISTON		1
20	530 01 51-62	CIRCLIP		2
21	578 01 86-02	ASSEMBLY	CONNECTING ROD	1
22	579 62 94-01	KIT		1
23	578 89 49-01	BAFFLE		1
24	577 88 73-01	HOSE		1
25	545 23 26-01	SEAL		1
26	579 15 51-01	PLUG		1
27	545 23 27-01	CAP	OIL CAP	1
28	574 76 51-01	SCREW	m4x1.41	4
29	579 62 95-01	KIT	incl. 28	1
30	575 96 27-01	SCREW	m5-0.8x20mm	4
31	580 95 55-01	SCREW	m4-0.7x16mm	3
32	579 62 91-01	KIT	"breather Incl. 23,24,31"	1
33	530 01 57-75	SCREW	8-16x.593	2
34	576 35 69-01	COVER		1
35	579 62 87-01	KIT	Incl. bolts	1
36	575 26 46-01	ASSEMBLY	fuel cap w/retainer	1
37	576 35 63-01	RETAINER		3
38	545 23 61-01	FUEL TANK ASSY	Incl. 36	1
39	579 62 89-01	KIT	fuel line Incl. 61	1
40	545 23 31-01	SCROLL		1
41	580 92 96-01	MODULE		1
42	530 02 75-23	RETAINER		2
43	575 67 06-01	ROPE	Incl. 53	1
44	545 05 49-01	SPRING		1
45	575 95 31-01	SCREW	m5-0.8x25mm	2
46	575 96 27-01	SCREW	m5-0.8x20mm	4
47	576 46 79-01	NUT	m5	2
48	576 81 71-01	CLUTCH COVER	"Incl. 45,47"	1
49	530 05 51-22	CLUTCH ASSY		1
50	530 09 41-89	WASHER		1
51	530 05 97-58	SPACER		1
52	545 23 01-02	FAN HOUSING	"Incl. 42,43,44,53,54,55"	1
53	574 78 17-01	HANDLE		1
54	545 05 26-02	PULLEY ASSY SI SM		1
55	530 01 57-75	SCREW	8-16x.593	2
56	530 01 64-63	WASHER		1
57	575 88 16-02	ASSEMBLY		1
58	575 95 32-01	SCREW	m4-0.7x22mm	2
59	575 96 27-01	SCREW	m5-0.8x20mm	3
60	545 23 28-01	PIN		2
61	575 53 31-02	HOSE		1
62	530 03 21-59	PISTON PIN		1
63	545 23 75-01	GASKET		1
64	575 95 31-01	SCREW	m5-0.8x25mm	2
65	579 07 32-01	BOLT		2
66	579 66 46-02	KIT	DECAL KIT	1
67	579 62 88-01	KIT	GASKET KIT	1



## SHAFT &amp; HANDLE

B428PS, 967622201, 2019-01

Ref	Part No	Description	Remark	QTY KIT
1	530 01 64-49	SCREW		4
2	575 50 62-01	HOUSING	RH	1
3	578 92 87-01	THROTTLE CABLE		1
4	575 78 41-01	ASSEMBLY		1
5	575 50 63-01	HOUSING	LH	1
6	545 06 79-01	SWITCH		1
7	580 74 56-01	TRIGGER		1
8	575 67 15-01	SPRING		1
9	576 63 24-01	TRIGGER		1
10	530 01 58-20	SCREW		1
11	545 21 60-01	HANDLE		1
12	530 01 61-52	WING NUT		1
13	579 62 94-02	KIT	Incl. 14	1
14	545 21 38-01	COUPLER		1
15	574 31 64-02	DRIVE SHAFT		1
16	579 62 94-04	KIT	Incl. 15	1
17	530 01 57-71	SCREW	1/4-20 x 1-1/4" square head	1
18	530 01 58-14	SCREW		2
19	530 05 22-86	LINE		1
20	580 30 50-01	SHIELD	Incl. 17, 18, 19	1
21	530 01 60-14	SCREW	12-24 x .960"	1
22	530 01 57-75	SCREW	8-16 x .593"	1
23	578 16 00-01	BEVEL GEAR ASSY		1
25	585 86 90-01	BRACKET		1
34	575 67 11-01	HOUSING	"Incl. 1,2,3,4,5,6,7,8,9"	1
36	578 18 51-01	WASHER		1
37	578 40 72-01	WASHER		1
38	521 80 40-01	NUT	LH thread	1
39	574 32 61-01	LOOP		1
42	530 05 91-85	CLAMP		1
43	576 78 97-01	HARNESS		1
44	578 85 18-01	BLADE		1
45	585 96 72-01	TRANSPORT GUARD		1
46	537 41 92-20	TRIMMER HEAD		1