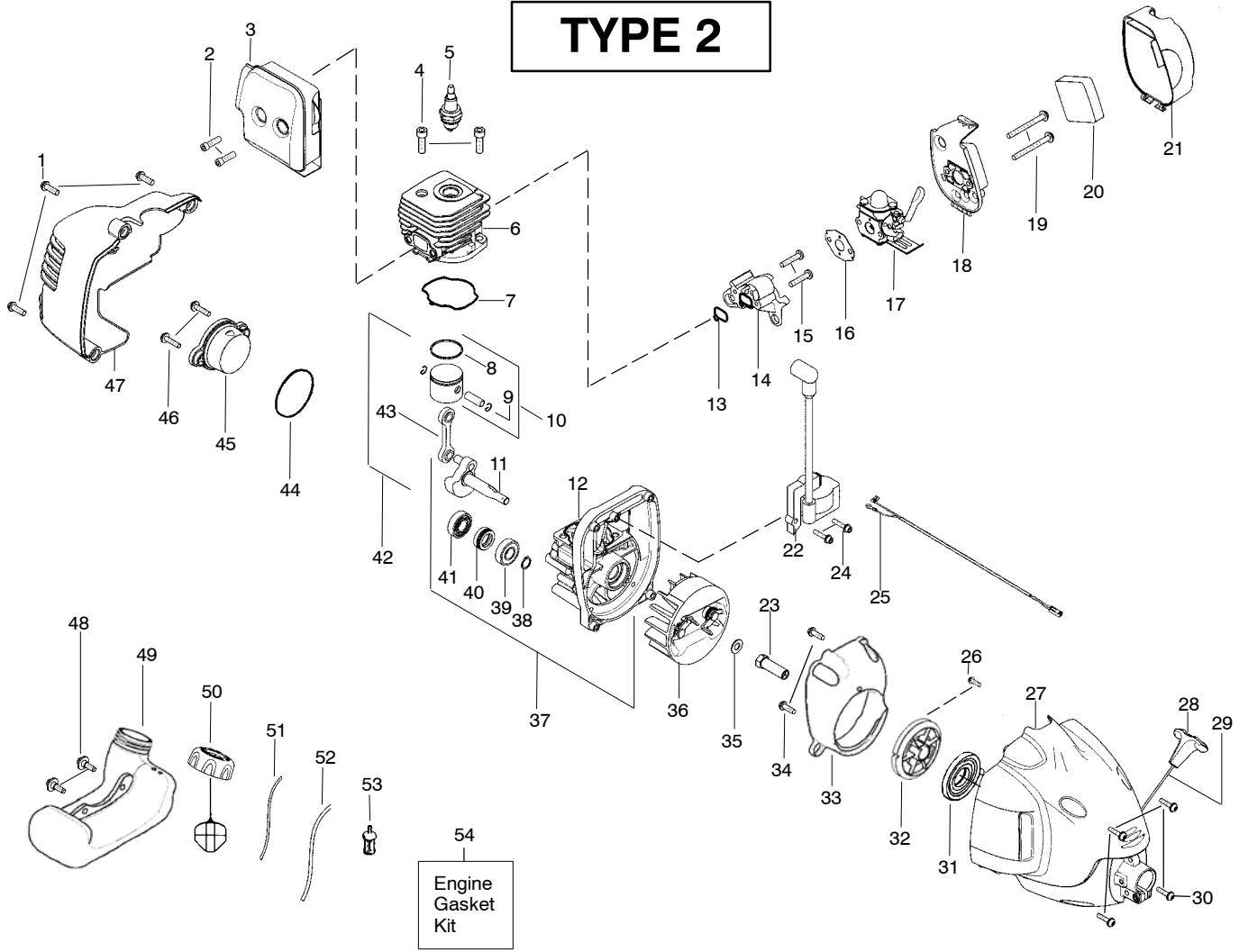


TYPE 2



Ref.	Part No.	Description	Ref.	Part No.	Description	Ref.	Part No.	Description
1.	530015880	Screw	21.	530057545	Cover-Air Box	45.	530057954	Assy-Plug (incl.44)
2.	530058982	Bolt-Muffler	22.	530039234	Ignition Module	46.	530016386	Screw
3.	530057863	Assy-Muffler/Shield (Incl. 2)	23.	530027953	Coupling-Drive	47.	530057539	Shroud-Rear
4.	530015953	Screw-Cylinder	24.	530016357	Screw	48.	530016445	Retainer-Tank
5.	952030249	Spark Plug (RCJ 6Y)	25.	545054801	Assy-Leadwire	49.	530057974	Assy-Fuel Tank (incl. filter, lines & fuel cap)
6.	530012541	Cylinder	26.	530016391	Screw	50.	530057973	Assy-Fuel Cap
7.	530071750	Seal-Cylinder (kit)	27.	545008204	Assy.-Fan Hsg	51.	530069247	Kit-Fuel Line (Small)
8.	530055120	Piston Ring	28.	530054834	Handle-Starter	52.	530069216	Kit-Fuel Line (Large)
9.	530015162	Retainer-Piston Pin	29.	530071798	Kit - Rope	53.	530095646	Assy-Fuel Pickup
10.	530071833	Kit - Piston (Incl. 8, 9)	30.	530016386	Screw	54.	530071750	Kit-Engine Gasket (Incl. 7,13,16,44)
11.	530012555	Assy-Crankshaft	31.	530042086	Spring-Starter			Not Shown
12.	530012582	Assy-Crankcase (Incl. 39,40,41)	32.	530071797	Kit-Starter Pulley	530035497	530058709	Bulb-Purge(walbro)
13.	530071750	Seal-Cyl/Carb.(kit)	33.	545080601	Baffle	530057827	530058662	Bulb-Purge(zama)
14.	530057547	Adapter-Carb.	34.	530015880	Screw			Choke Lever - Zama
15.	530016441	Screw	35.	530015828	Washer-Flat			Choke Lever - Walbro
16.	530071750	Gasket-Carb. (kit)	36.	530054115	Assy-Flywheel			
17.	-----	Kit-Carb.	37.	530071751	Assy-C'case & C'shaft (Incl. 11,12,38)			
	530071822	Zama (C1U-W24)	38.	530015941	Retain. Ring-C'shaft			
	545081807	Walbro (WT-670)	39.	530055728	Outer Bearing			
			40.	530019264	Seal			
			41.	530032125	Inner Bearing			
			42.	530071785	Kit-Piston/Rod (Incl. 10,43)			
18.	530059246	Air Box	43.	530069945	Assy-Connecting Rod			
19.	530016429	Screw	44.	530071750	O-Ring-C'case (kit)			
20.	530036575	Foam-Air Filter						

(Note: Repair kits are not available for this carburetor)

↙ = NEW PART NUMBER FOR THIS IPL

* = REFER TO THE SERVICE REFERENCE INDICATED FOR MORE INFORMATION. (LOCATED AT END OF IPL)