

<b>PNC</b>	<b>Type/Prefix/nd</b>	<b>Model</b>	<b>Brand</b>
953900700	01	CABRIO 341 SB	McCulloch
953900702	01	B 341 BX	PARTNER
953900703	01	CABRIO 390 SB	McCulloch

**Number of Pages 1 of 5**

<b>Factory: IIQ - Valmadrera</b>	<b>Product Group: OP 93</b>	
<b>Publication Number: MIPL2006_V050000003</b>	<b>Petrol Portable</b>	
<b>Publication Date: 30/01/06</b>	<b>Sub Group 9433</b>	

FIGURE 4

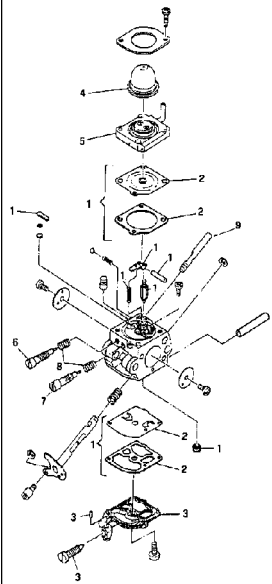


FIGURE 1

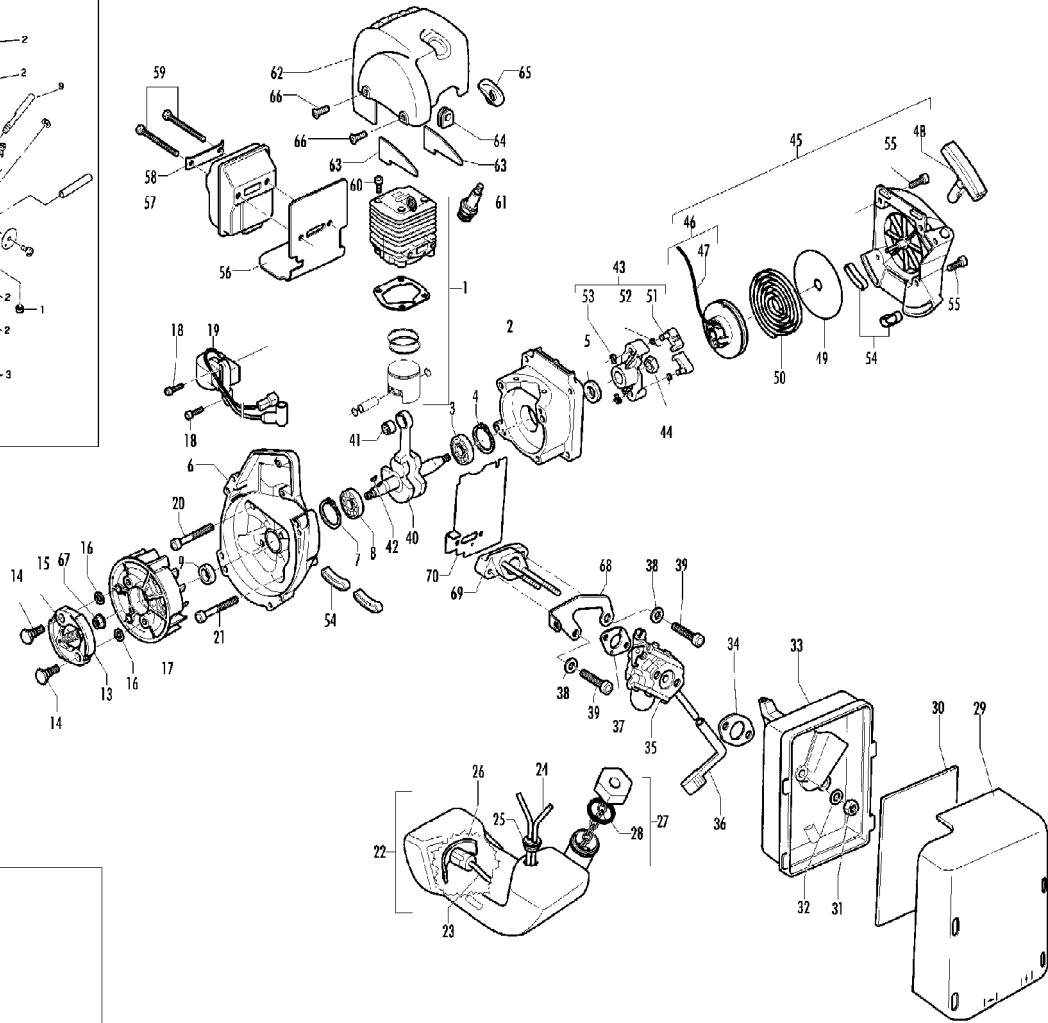


FIGURE 3

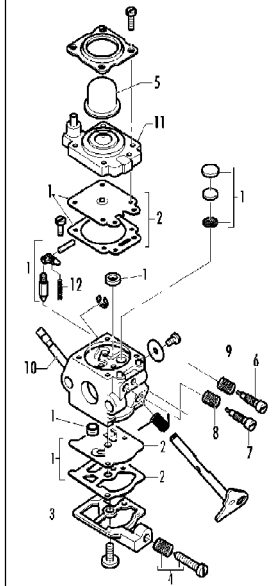
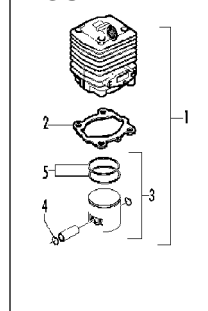


FIGURE 2



Item	P/N McC	P/N ELX	Qty	DESCRIPTION
<b>FIGURE 1</b>				
1		<b>FIGURE 2</b>		
2	247936	538247936	1	crankcase kit (starter)
3	• 235900	538235900	1	ball bearing 6002(15/32/9)
4	• 235899	538235899	1	seeger
C 5	• 228872	538228872	1	seal 13-32-5 (S7)
6	247935	538247935	1	crankcase kit (Flywheel)
7	• 235899	538235899	1	seeger ring
8	• 235900	538235900	1	ball bearing 6002(15/32/9)
C 9	• 228872	538228872	1	seal 13-32-5 (S7)
B 13	247937	538247937	1	clutch assy
14	• 241269	538241269	2	pin
C 15	• 241270	538241270	1	clutch spring
16	• 236956	538236956	2	washer
17	241240	538241240	1	flywheel
18	235806	538235806	2	screw M5x20
C 19	241298	538241298	1	ignition coil
20	235808	538235808	2	screw M5x50
21	235804	538235804	2	screw M5x30
C 22	241541	538241541	1	tank mix assy
B 23	• 229809	538229809	1	hose fuel mm245
B 24	• 229743	538229743	1	hose fuel 150mm
C 25	• 235675	538235675	1	fuel tank grommet
A 26	240452	538240452	1	pick up fuel
B 27	236563	538236563	1	fuel cap ass'y
A 28	• 236564	538236564	1	cap gasket
29	242711	538242711	1	air filter cover
B 30	241523	538241523	1	air filter
31	235642	538235642	2	nut M5
32	235248	538235248	2	washer
33	237452	538237452	1	air filter box
A 34	227417	538227417	1	gasket
C 35	<b>FIGURE 3/4</b>			
36	227255	538227255	1	choke knob
A 37	227692	538227692	1	gasket
38	235248	538235248	2	washer
39	235803	538235803	2	screw M5x25
40	241266	538241266	1	crankshaft assy
C 41	• 235742	538235742	1	needle bearing Ø 9x14x12
C 42	227631	538227631	1	key
43	242800	538242800	1	starter pawl ass'y
44	235218	538235218	1	nut M8
C 45	242808	538242808	1	starter assy
B 46	• 249163	538249163	1	pulley/rope
A 47	• 227703	538227703	1	rope
48	• 240884	538240884	1	starter handle
49	• 227467	538227467	1	spring shield
B 50	• 227300	538227300	1	rewind spring
B 51	• 241781	538241781	2	pawl
52	• 241782	538241782	2	spring shield
B 53	• 111088	538111088	2	snap ring
54	241248	538241248	4	fuel tank grommet
55	236527	538236527	4	screw M6x16
C 56	241280	538241280	1	muffler gasket
C 57	241432	538241432	1	muffler assy
58	• 227236	538227236	1	clamp
59	• 227274	538227274	2	screw M5x60
60	227565	538227565	4	screw M5x25
A 61	92879	538092879	1	spark plug RDJ8J
62	242706	538242706	1	engine cover
63	241416	538241416	2	engine cover gasket

Item	P/N McC	P/N ELX	Qty	DESCRIPTION
64	236322	538236322	1	grommet
65	241241	538241241	1	cap
66	240688	538240688	2	screw M5x14 + washer
67	235218	538235218	1	nut M8
68	243585	538243585	1	plate
C 69	241434	538241434	1	carb spacer
C 70	227239	538227239	1	gasket

<b>FIGURE 2</b>		<b>34 cc</b>		
C 1	247942	538247942	1	cylinder/piston kit
B 2	• 227286	538227286	1	gasket
C 3	• 235799	538235799	1	piston kit
4	• 235008	538235008	2	ring snap int
B 5	• 235677	538235677	2	piston ring

<b>FIGURE 2</b>		<b>38 cc</b>		
C 1	247700	538247700	1	cylinder/piston kit
B 2	• 227286	538227286	1	gasket
C 3	• 247256	538247256	1	piston kit
4	• 235008	538235008	2	ring snap int
B 5	• 240005	538240005	2	piston ring

<b>FIGURE 3</b>		<b>WALBRO WT 694</b>		
C -	242949	538242949	1	carburettor WT 694
B 1	• 229198	538229198	1	K repair kit
A 2	• 229191	538229191	1	gasket + diaph. Kit
3	• 237480	538237480	1	pump cover
4	• 237481	538237481	1	idle screw kit
C 5	• 225834	538225834	1	primer bulb
6	• 246540	538246540	1	needle screw H
7	• 246541	538246541	1	needle screw L
8	• 229927	538229927	1	spring needle
9	• 229601	538229601	1	spring needle
10	• 225962	538225962	1	choke shaft
C 11	• 246949	538246949	1	primer bulb support
C 12	• 246950	538246950	1	spring

<b>FIGURE 4</b>		<b>ZAMA C1Q M41</b>		
C -	-	-	-	carburettor C1Q M41
B 1	226226	538226226	1	repair kit
A 2	• 226227	538226227	1	gasket + diaph. Kit
3	246945	538246945	1	pump cover
4	246946	538246946	1	primer bulb
C 5	246947	538246947	1	primer bulb support
6	226228	538226228	1	needle screw H
7	226229	538226229	1	needle screw L
8	226230	538226230	2	spring needle
9	246948	538246948	1	choke shaft

A=ALTA ROTAZIONE  
 B=MEDIA ROTAZIONE  
 C=ALTA ROTAZIONE  
 NUOVI CODICI

A=HIGH MOVING  
 B=MEDIUM MOVING  
 C=SLOW MOVING  
 NEW P. NUMBERS

A=HAUTE DEMANDE  
 B=MOYENNE DEMANDE  
 C=BASSE DEMANDE  
 NOUVELLES REFERENCES

A=GROBE NACHFRAGE  
 B=MITTELMAESSIGE  
 C=WENIGE NACHFRAGE  
 NEU CODEX

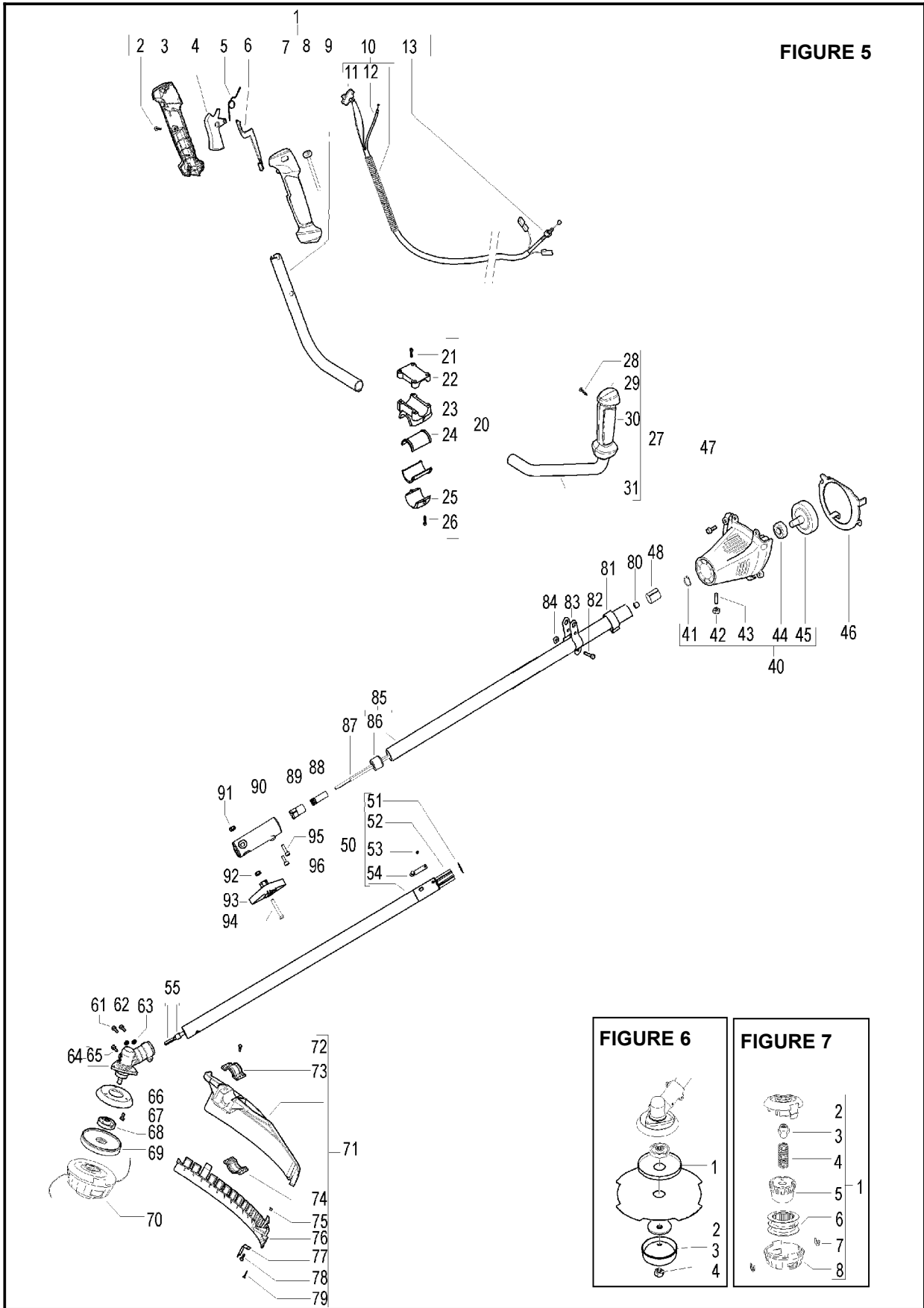


FIGURE 5

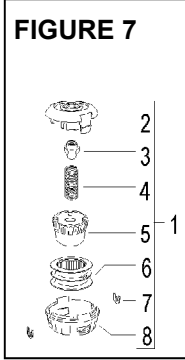
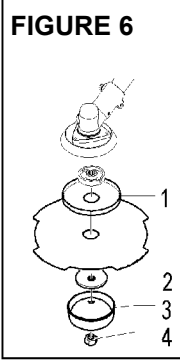


FIGURE 6

FIGURE 7

Item	P/N McC	P/N ELX	Qty	DESCRIPTION
<b>FIGURE 5</b>				
1	243563	538243563	1	right handle assy
2	• 240862	538240862	3	screw 4x18
3	• 242533	538242533	1	right handle (right half)
4	• 242537	538242537	1	throttle trigger
5	• 242540	538242540	1	trigger spring
6	• 242538	538242538	1	safety lever
7	• 242534	538242534	1	right handle (left half)
8	• 242539	538242539	1	throttle advance
9	• 242605	538242605	1	right handle bar
C 10	• 243566	538243566	1	wires assy
11	•• 242439	538242439	1	switch
C 12	•• 243569	538243569	1	throttle cable
13	• 235912	538235912	1	nut M6
20	243428	538243428	1	handle clamp assy
21	• 229077	538229077	2	screw M5x18
22	• 242200	538242200	1	upper clamp
23	• 243082	538243082	1	handle clamp
24	• 241684	538241684	2	d .25 adapter
25	• 242900	538242900	1	lower clamp
26	• 235803	538235803	4	screw M5x25
27	242613	538242613	1	left handle assy
28	• 240862	538240862	2	screw 4x18
29	• 242536	538242536	1	left handle (right half)
30	• 242535	538242535	1	left handle (left half)
31	• 242606	538242606	1	left handle bar
40	243575	538243575	1	mount ass'y
41	• 236378	538236378	1	snap ring
42	• 241624	538241624	1	nut M8
43	• 243576	538243576	1	headless screw M8x35
44	• 235918	538235918	1	ball bearing
45	• 243572	538243572	1	clutch drum
46	242398	538242398	1	diaphragm
47	235806	538235806	4	screw M5x20
48	243584	538243584	1	reinforcement
50	249721	538249721	1	lower shaft assy
51	• 242831	538242831	2	shaft guide retainer ring
52	• 243206	538243206	1	shaft guide
53	• 243396	538243396	1	rivet
54	• 243395	538243395	1	button
55	243211	538243211	1	shaft + retainer
61	235802	538235802	1	screw M5x14
62	235803	538235803	1	screw M5x25
63	236529	538236529	2	spli washer
64	242728	538242728	1	gaer box
65	• 240151	538240151	1	screw M8x10
66	242729	538242729	1	flange adapter
67	240688	538240688	3	screw M5 and washer
A 68	242815	538242815	1	flange
B 69	242823	538242823	1	spacer
A 70	<b>FIGURE 7</b>			

Item	P/N McC	P/N ELX	Qty	DESCRIPTION
B 71	249155	538249155	1	guard ass'y
72	• 227563	538227563	2	screw M5x16
73	• 242629	538242629	1	upper clamp
74	• 242752	538242752	1	lower clamp
75	• 229208	538229208	2	nut
B 76	• 242644	538242644	1	guard extension
77	• 241973	538241973	1	line cutter
78	• 227563	538227563	2	screw M5x16
79	• 240862	538240862	1	screw M5x14
80	243290	538243290	1	shaft retainer ring
81	229850	538229850	2	cable retain
82	235911	538235911	2	screw M6x12
83	228152	538228152	2	half hook, d.25
84	236642	538236642	2	nut M6
85	243156	538243156	1	upper shaft assy
86	• 228192	538228192	3	bushing assy
87	243178	538243178	1	shaft
88	11249	538011249	1	shaft joint
89	11248	538011248	1	bushing
90	243180	538243180	1	joint
91	228926	538228926	1	self locking nut M6
92	235912	538235912	1	nut M6
93	502203802	502203802	1	knob
94	242146	538242146	1	screw M6x40
95	229077	538229077	1	screw M5x18
96	236381	538236381	1	screw M5x10

<b>FIGURE 6</b>				
B 1	241155	538241155	1	flange
A 2	241006	538241006	1	plate blade
A 3	236596	538236596	1	cup
A 4	240481	538240481	1	nut

<b>FIGURE 7</b>				
A 1	531025001	531025001	1	P 25 trimmer head
2	• 537419302	537419302	1	body
3	• 537338901	537338901	1	adapter T25
C 4	• 537338801	537338801	1	spring T25
C 5	• 537419601	537419601	1	knob
C 6	• 537419501	537419501	1	spool whithout line
C 7	• 537419701	537419701	2	bushing
8	• 537419401	537419401	1	cover

A=ALTA ROTAZIONE  
 B=MEDIA ROTAZIONE  
 C=ALTA ROTAZIONE  
 NUOVI CODICI

A=HIGH MOVING  
 B=MEDIUM MOVING  
 C=SLOW MOVING  
 NEW P. NUMBERS

A=HAUTE DEMANDE  
 B=MOYENNE DEMANDE  
 C=BASSE DEMANDE  
 NOUVELLES REFERENCES

A=GROBE NACHFRAGE  
 B=MITTELMAESSIGE  
 C=WENIGE NACHFRAGE  
 NEU CODEX