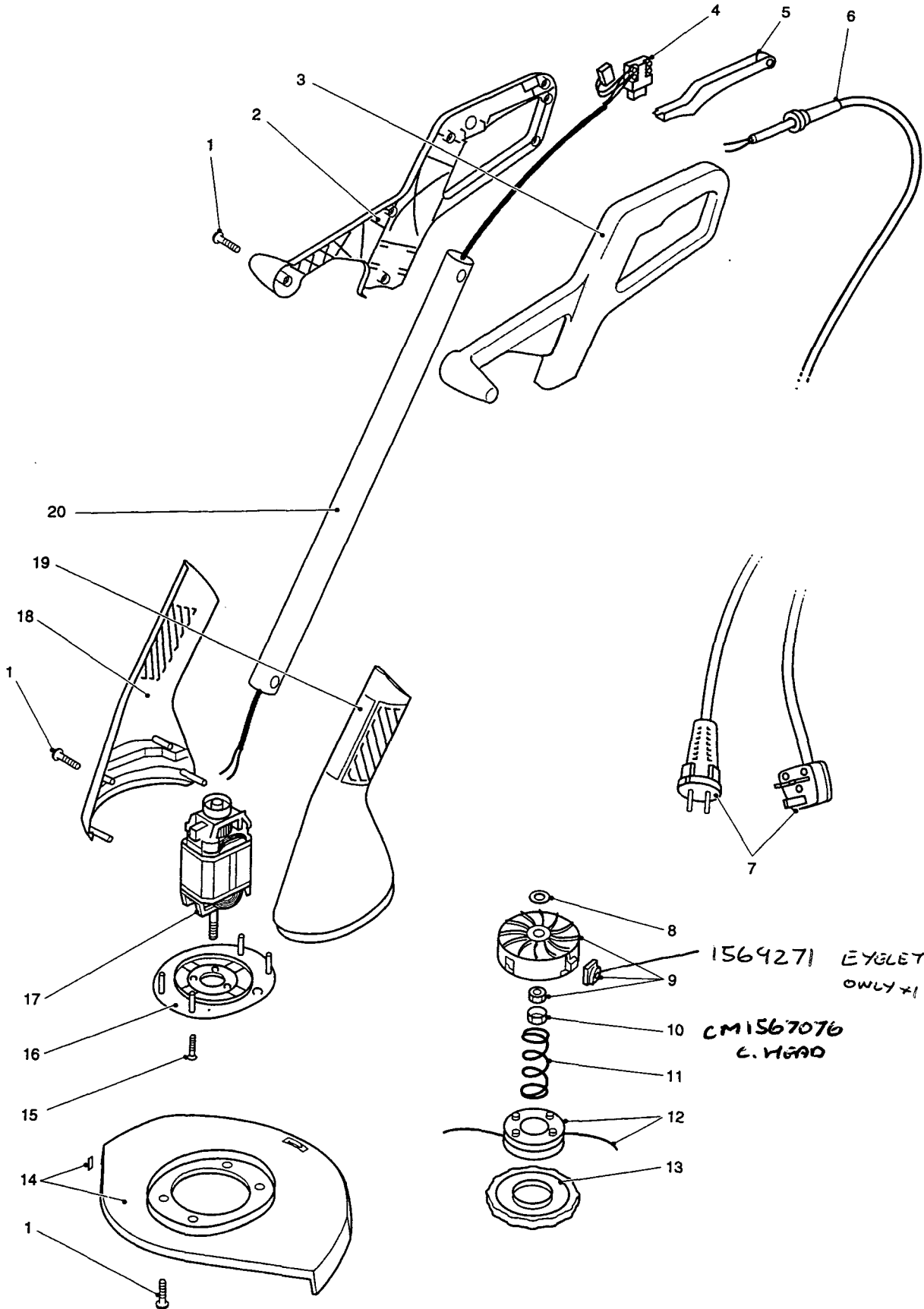


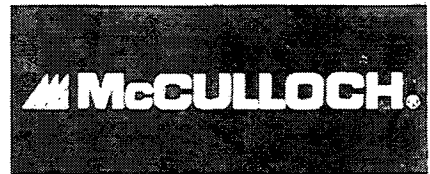
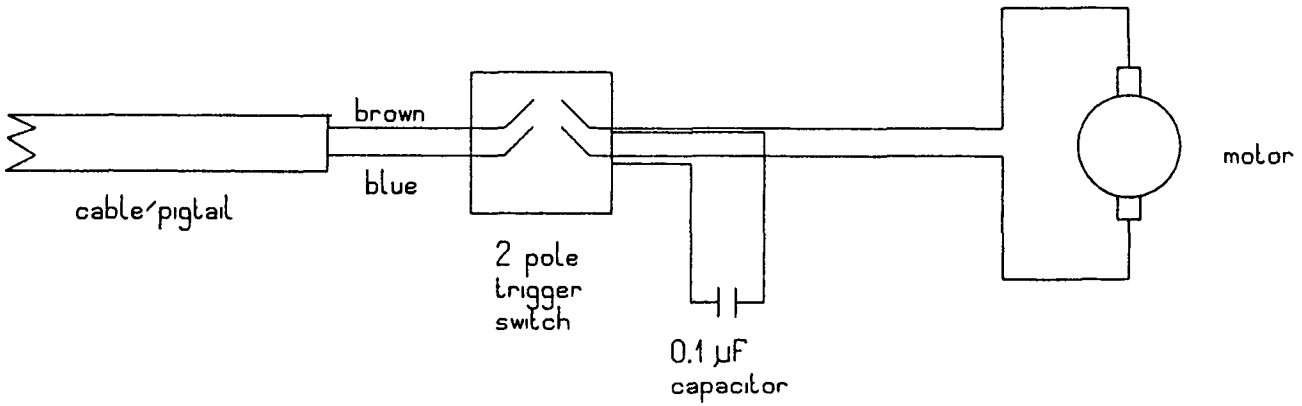
# Trim Mac MT 150



## Trim Mac MT 150

| Item        | Part No.        | Description                                   | French                                    | German                              |
|-------------|-----------------|---|---|-------------------------------------|
| 1.          | 15700-79        | Screw   | Vis                                       | Schraube                            |
| 2.          | 15608-54        | Right hand handle (yellow)                    | Carter droit de poignee (jaune)           | Handgriffhalfte links (gelb)        |
|             | 15608-83        | Right hand handle (grey)                      | Carter droit de poignee (gris)            | Handgriffhalfte links (grau)        |
| 3.          | 15609-54        | Left hand handle (yellow)                     | Carter gauche de poignee (jaune)          | Handgriffhalfte rechts (gelb)       |
|             | 15609-83        | Left hand handle (grey)                       | Carter gauche de poignee (gris)           | Handgriffhalfte rechts (grau)       |
| 4.          | 10351-76        | Motor cable assembly                          | Cable                                     | Schalter kompl. inkl. kabel         |
| 5.          | 15675-68        | Switch actuator lever                         | Levier de securite                        | Starthebel                          |
| 6.          | 12226-71        | Cord protector                                | Protecteur de cable                       | Zugentlastung                       |
| 7.          | 10300-70        | Pigtail cord (Euro plug)                      | Prise electrique europeenne               | Netzkabel (Euro)                    |
|             | 10302-70        | Pigtail cord (UK)                             | Prise electrique (UK)                     | Netzkabel (UK)                      |
|             | 10303-70        | Pigtail cord (Swiss)                          | Prise electrique (Swiss)                  | Netzkabel (Swiss)                   |
|             | 10304-70        | Pigtail cord (Italy)                          | Prise electrique (Italy)                  | Netzkabel (Italy)                   |
|             | 10305-54        | Mains Cord (Euro)                             | Prise electrique europeenne               | Verwende (UK)                       |
|             | 10301-54        | Mains Cord 16m (UK Plug)                      | Prise electrique anglaise                 | Verwende (Euro)                     |
| 8.          | 15702-79        | Washer  | Rondelle                                  | Scheibe                             |
| 9.          | 15670-54        | Spool casing assy complete with eyelets & cap | Carter de tete avec oeillets et couvercle | Gehause inkl. fadenose und deckel   |
| 10.         | 15704-71        | Nut cap                                       | Ecrou                                     | Mutter                              |
| 11.         | 15799-70        | Spring  | Ressort                                   | Feder                               |
| 12.         | 91700-42        | Spool and line assembly                       | Recharge de fil nylon assemblee           | Ersatzspule inkl. faden             |
| 13.         | 15672-54        | Spool cap                                     | Couvercle de tete fil nylon               | Deckel                              |
| 14.         | 15664-71        | 10" guard with line cutter                    | Carter 10" avec couteau                   | Schutz inkl. fadenmesser 0 25cm     |
|             | 15665-71        | 12" guard with line cutter                    | Carter 12" avec couteau                   | Schutz inkl. fadenmesser 0 30cm     |
| 15.         | 15708-79        | Motor fixing screw                            | Vis de fixation moteur                    | Schraube                            |
| 16.         | 15676-71        | Motor mount                                   | Support moteur                            | Motorbefestigungsplatte             |
| 17.         | 62402-70        | Motor   | Moteur                                    | Motor                               |
| 18.         | 15606-54        | Right hand clamshell (yellow)                 | Carter moteur gauche (jaune)              | Motorgehausehalfte rechts (gelb)    |
|             | 15606-83        | Right hand clamshell (grey)                   | Carter moteur gauche (gris)               | Motorgehausehalfte rechts (grau)    |
| 19.         | 15607-54        | Left hand clamshell (yellow)                  | Carter moteur droit (jaune)               | Motorgehausehalfte links (gelb)     |
|             | 15607-83        | Left hand clamshell (grey)                    | Carter moteur droit (gris)                | Motorgehausehalfte links (grau)     |
| 20.         | 15699-71        | Metal shaft black                             | Transmission metal noir                   | Shaft schwarz                       |
| <b>Item</b> | <b>Part No.</b> | <b>Dutch</b>                                  | <b>Italian</b>                            | <b>Spanish</b>                      |
| 1.          | 15700-79        | Schroef                                       | Vite                                      | Tornillo                            |
| 2.          | 15608-54        | Rechterkant handgreep (geel)                  | Semimpugnatura sinistra (giallo)          | Manivela derecha (amarillo)         |
|             | 15608-83        | Rechterkant handgreep (grijs)                 | Semimpugnatura sinistra (grigio)          | Manivela derecha (gris)             |
| 3.          | 15609-54        | Linkerkant handgreep (geel)                   | Semimpugnatura destra (giallo)            | Manivela izquierda (amarillo)       |
|             | 15609-83        | Linkerkant handgreep (grijs)                  | Semimpugnatura destra (grigio)            | Manivela izquierda (gris)           |
| 4.          | 10351-76        | Snoer met schakelaar                          | Cavo & interruttore                       | Montura del cable del motor         |
| 5.          | 15675-68        | Schakelaarhandel                              | Leva interruttore                         | Palanca de accionamiento            |
| 6.          | 12226-71        | Snoer beveiliging                             | Passacavo                                 | Protector del cable                 |
| 7.          | 10300-70        | Aansluitsnoer met Euro stekker                | Cavo & spina schuko (Europea)             | Clavija de conexion (Europea)       |
|             | 10302-70        | Aansluitsnoer met UK stekker                  | Cavo & spina schuko (UK)                  | Clavija de conexion (UK)            |
|             | 10303-70        | Aansluitsnoer met Zwitserse stekker           | Cavo & spina schuko (Svizzera)            | Clavija de conexion (Suizo)         |
|             | 10304-70        | Aansluitsnoer met Italiaanse stekker          | Cavo & spina schuko (Italiana)            | Clavija de conexion (Italiano)      |
|             | 10305-54        | Aansluitsnoer met UK stekker                  | Cavo & spina UK                           | Clavija de conexion (UK)            |
|             | 10301-54        | Aansluitsnoer met Euro stekker                | Cavo & spina schuko (Europea)             | Clavija de conexion (Europeo)       |
| 8.          | 15702-79        | Ring  | Rondella                                  | Arandela                            |
| 9.          | 15670-54        | Maaikophuis                                   | Kit corpo superiore testina               | Carcasa de carrete                  |
| 10.         | 15704-71        | Bout  | Dado                                      | Tuerca                              |
| 11.         | 15799-70        | Veer  | Molla                                     | Muelle                              |
| 12.         | 91700-42        | Draadspoel compleet                           | Rocchetto con filo                        | Cabezal Y carrete de hilo           |
| 13.         | 15672-54        | Spoel afdekplaat                              | Coperchio testina                         | Cubierta de cabezal                 |
| 14.         | 15664-71        | 10" Beschermkap met draadsnijder              | Difesa & lametta 10"                      | Protector con cuchilla para hilo 10 |
|             | 15665-71        | 12" Beschermkap met draadsnijder              | Difesa & lametta 12"                      | Protector con cuchilla para hilo 12 |
| 15.         | 15708-79        | Motor bevestigingsschroef                     | Vite motore                               | Tornillo de ajuste del motor        |
| 16.         | 15676-71        | Motorafdekplaat                               | Supporto motore                           | Montura del motor                   |
| 17.         | 62402-70        | Motor   | Motore                                    | Motor                               |
| 18.         | 15606-54        | Rechterkant motorbehuizing (geel)             | Corpo inferiore destro (giallo)           | Armazon derecho (amarillo)          |
|             | 15606-83        | Rechterkant motorbehuizing (grijs)            | Corpo inferiore destro (grigio)           | Armazon derecho (gris)              |
| 19.         | 15607-54        | Linkerkant motorbehuizing (geel)              | Corpo inferiore sinistro (giallo)         | Armazon izquierdo (amarillo)        |
|             | 15607-83        | Linkerkant motorbehuizing (grijs)             | Corpo inferiore sinistro (grigio)         | Armazon izquierdo (gris)            |
| 20.         | 15699-71        | Metalen as zwart                              | Asta metallo nera                         | Tubo transmision - negro            |

## Trim Mac MT 150



**D** McCulloch GmbH  
Bochum 44805

**NL** Fam Nederland B.V.  
3606 CH Maarssen

**A** McCulloch GesmbH  
2355 Wiener Neudorf

**F** Shop-Vac France, 91028  
Evry Cedex 2851

**I** McCulloch Italiana s.r.l., 22049  
Valmadrera (CO)

**E** McCulloch España SA,  
28914 Leganes,  
Madrid

**GB** Goblin Ltd., Normanton WF6 1TT

**IRL** Goblin Ireland Ltd.; Tralee