

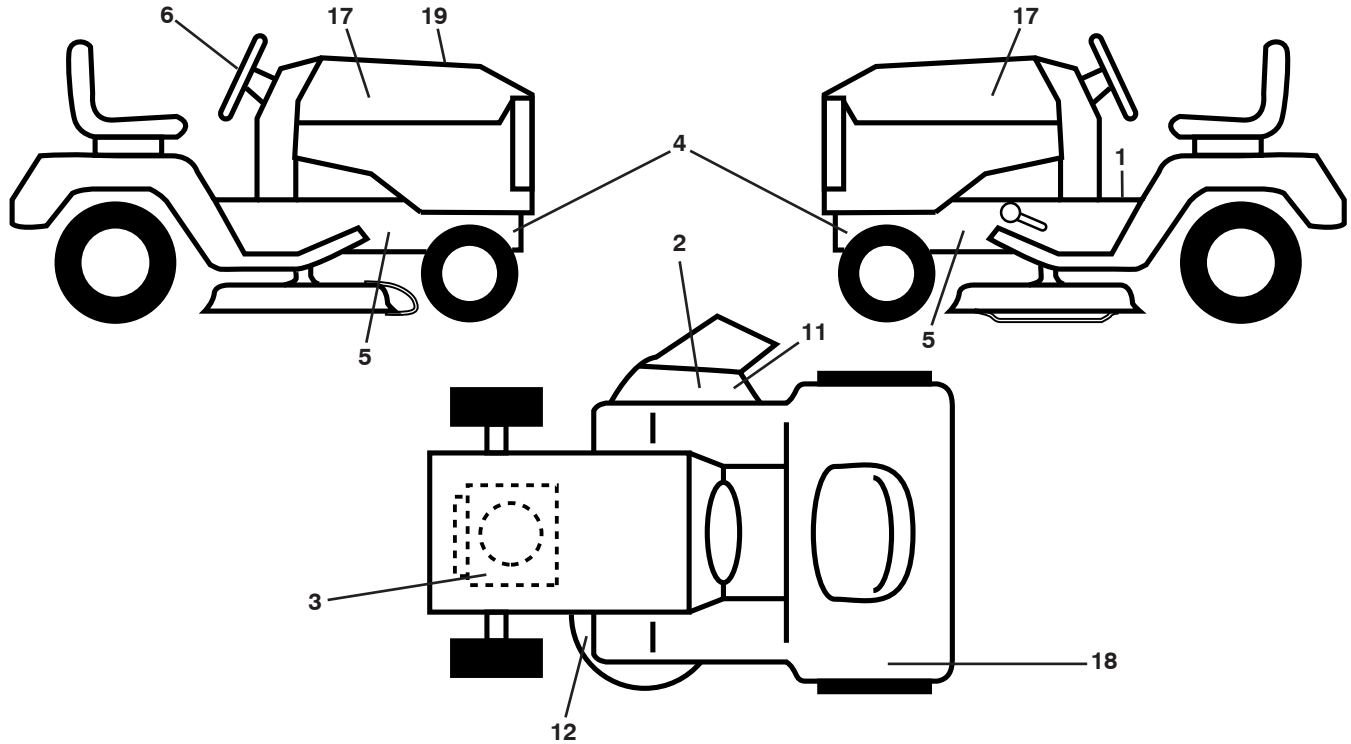
ILLUSTRATED PARTS LIST

MODEL NO. 96041040600

**CUSTOMER CATALOG NO. M110-97T CLASSIC
CLASSIC**

PRODUCT NO. 960 41 04-06

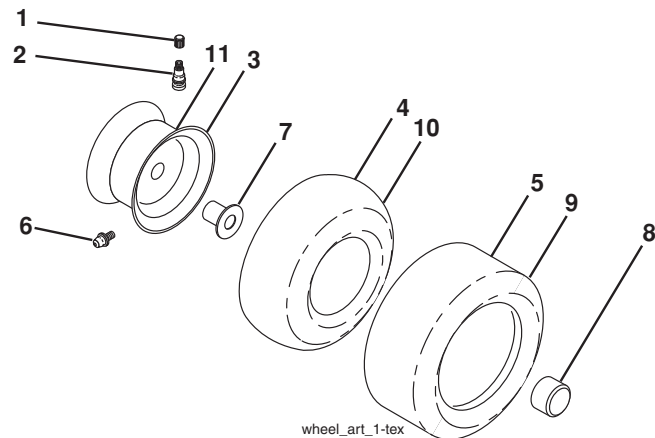
**TRACTOR - - MODEL NO. M110-97T CLASSIC (96041040600), PRODUCT NO. 960 41 04-06
DECALS 27**



| KEY NO. | PART NO. | DESCRIPTION |
|---------|--------------|----------------------------|
| 1 | 581 57 83-01 | Decal, Operators |
| 2 | 584 90 46-01 | Decal, Deflect. Warning |
| 3 | 581 57 97-01 | Decal, Engine Warning |
| 4 | 581 57 98-01 | Decal, Warning Ser./Fire |
| 5 | 581 57 96-01 | Decal, Chassis Hot Muffler |
| 6 | 501 49 43-01 | Decal, Steering Wheel |
| 11 | 581 57 92-01 | Decal, Warning |
| 12 | 581 58 00-03 | Decal, Deck Sch. |
| 17 | 581 09 12-01 | Decal, Hood |

| KEY NO. | PART NO. | DESCRIPTION |
|---------|--------------|----------------------------|
| 18 | 591 16 35-01 | Decal, Fender |
| 19 | 591 17 12-01 | Decal, Replacement |
| -- | 581 72 46-01 | Decal, Drawbar |
| -- | 532 41 12-73 | Pad, Footrest RH |
| -- | 532 40 95-05 | Pad, Footrest, LH |
| -- | 115 91 05-40 | Manual Operator's (Euro) |
| -- | 115 91-06-50 | Manual Operator's (Scan) |
| -- | 115 91-07-20 | Manual Operator's (E-Bloc) |
| -- | 115 91-08-30 | Manual Operator's (Baltic) |

WHEELS AND TIRES



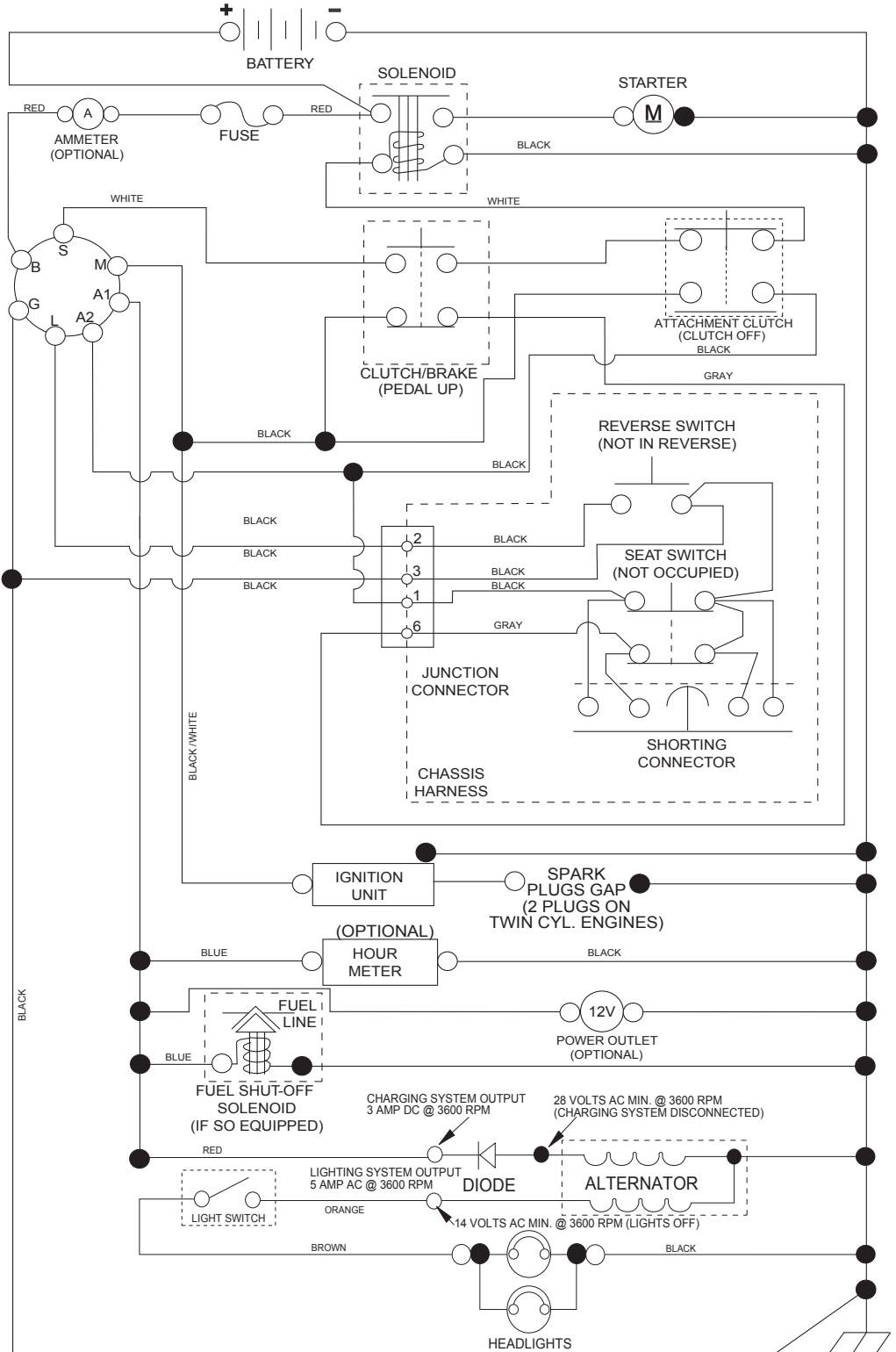
| KEY NO. | PART NO. | DESCRIPTION |
|---------|--------------|-----------------------------------|
| 1 | 532 05 91-92 | Cap Valve Tire |
| 2 | 532 06 51-39 | Stem Valve |
| 3 | 532 12 51-21 | Rim Asm 6" Front |
| 4 | 532 05 99-04 | Tube Front (Service Item Only) |
| 5 | 532 10 62-22 | Tire Front 15 x 6-6 |
| 6 | 532 00 02-78 | Fitting Grease (Front Wheel Only) |
| 7 | 532 00 90-40 | Bearing Flange (Front Wheel Only) |
| 8 | 532 19 32-68 | Cap Axle 1 50 x 1 00 |
| 9 | 532 12 46-35 | Tire Rear 18 x 8.5-8 |
| 10 | 532 00 71-52 | Tube Rear (Service Item Only) |
| 11 | 532 12 51-22 | Rim Asm 8" Rear |
| -- | 532 14 43-34 | Sealant, Tire (10 oz. Tube) |

NOTE: All component dimensions given in U.S. inches
1 inch = 25.4 mm

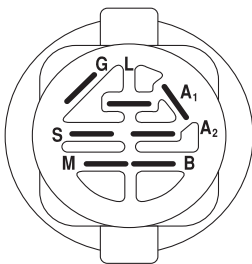
TRACTOR - - MODEL NO. M110-97T CLASSIC (96041040600), PRODUCT NO. 960 41 04-06

SCHEMATIC 38

SCH11

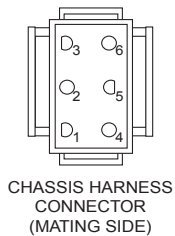


NOTE
 YOUR TRACTOR IS EQUIPPED WITH A SPECIAL ALTERNATOR SYSTEM. THE LIGHTS ARE NOT CONNECTED TO THE BATTERY, BUT HAVE THEIR OWN ELECTRICAL SOURCE. BECAUSE OF THIS, THE BRIGHTNESS OF THE LIGHTS WILL CHANGE WITH ENGINE SPEED. AT IDLE THE LIGHTS WILL DIM. AS THE ENGINE IS SPEEDED UP, THE LIGHTS WILL BECOME THEIR BRIGHTEST.



IGNITION SWITCH

| POSITION | CIRCUIT | "MAKE" |
|--------------|------------|--------|
| OFF | M+G+A1 | |
| RUN/OVERRIDE | B+A1 | |
| RUN | B+A1 | L+A2 |
| START | B + S + A1 | |

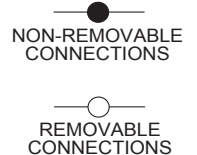


CHASSIS HARNESS CONNECTOR (MATING SIDE)

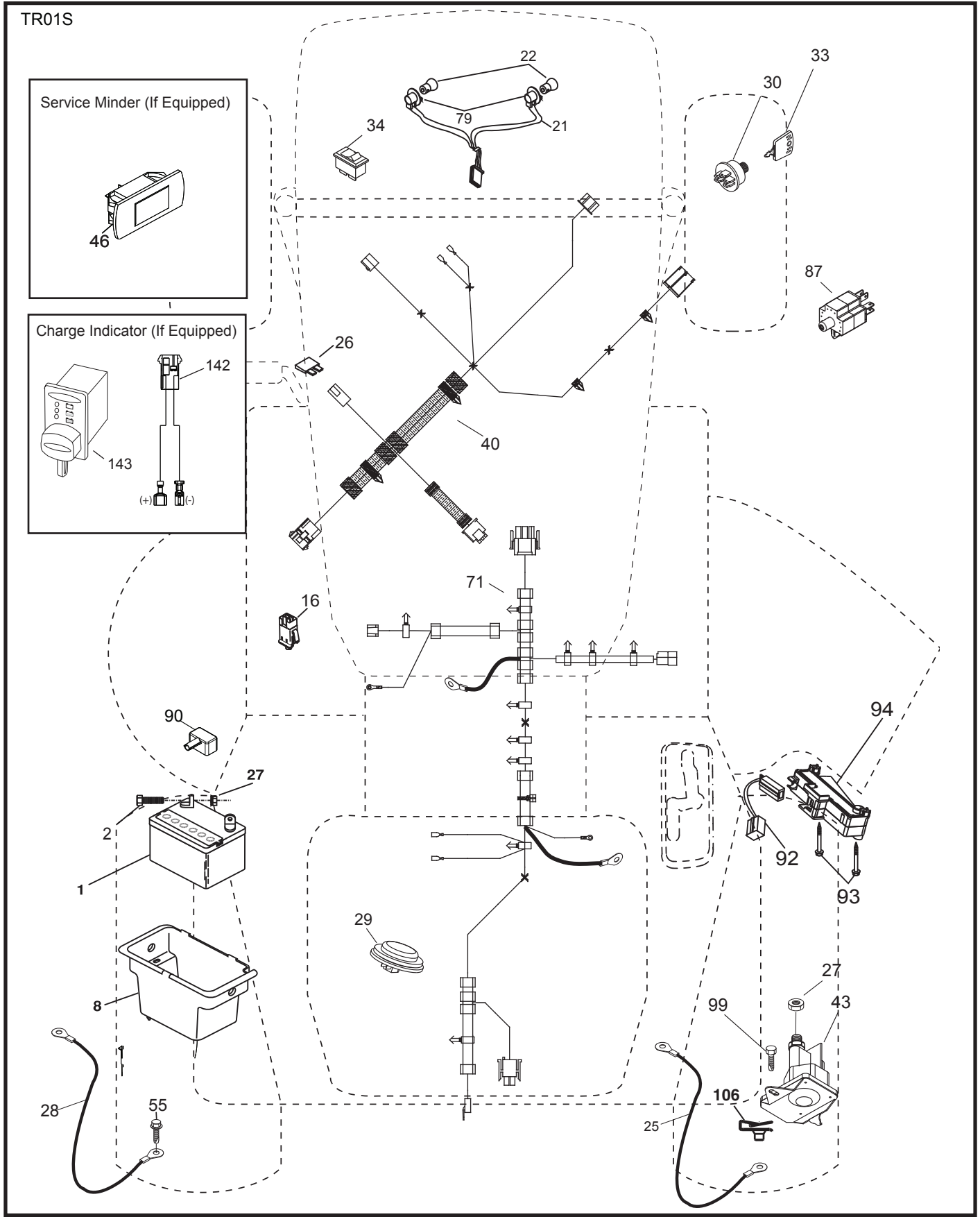


DASH HARNESS CONNECTOR (MATING SIDE)

WIRING INSULATED CLIPS
 NOTE: IF WIRING INSULATED CLIPS WERE REMOVED FOR SERVICING OF UNIT, THEY SHOULD BE RE-INSTALLED TO PROPERLY SECURE YOUR WIRING.



TRACTOR - - MODEL NO. M110-97T CLASSIC (96041040600), PRODUCT NO. 960 41 04-06
ELECTRICAL 32

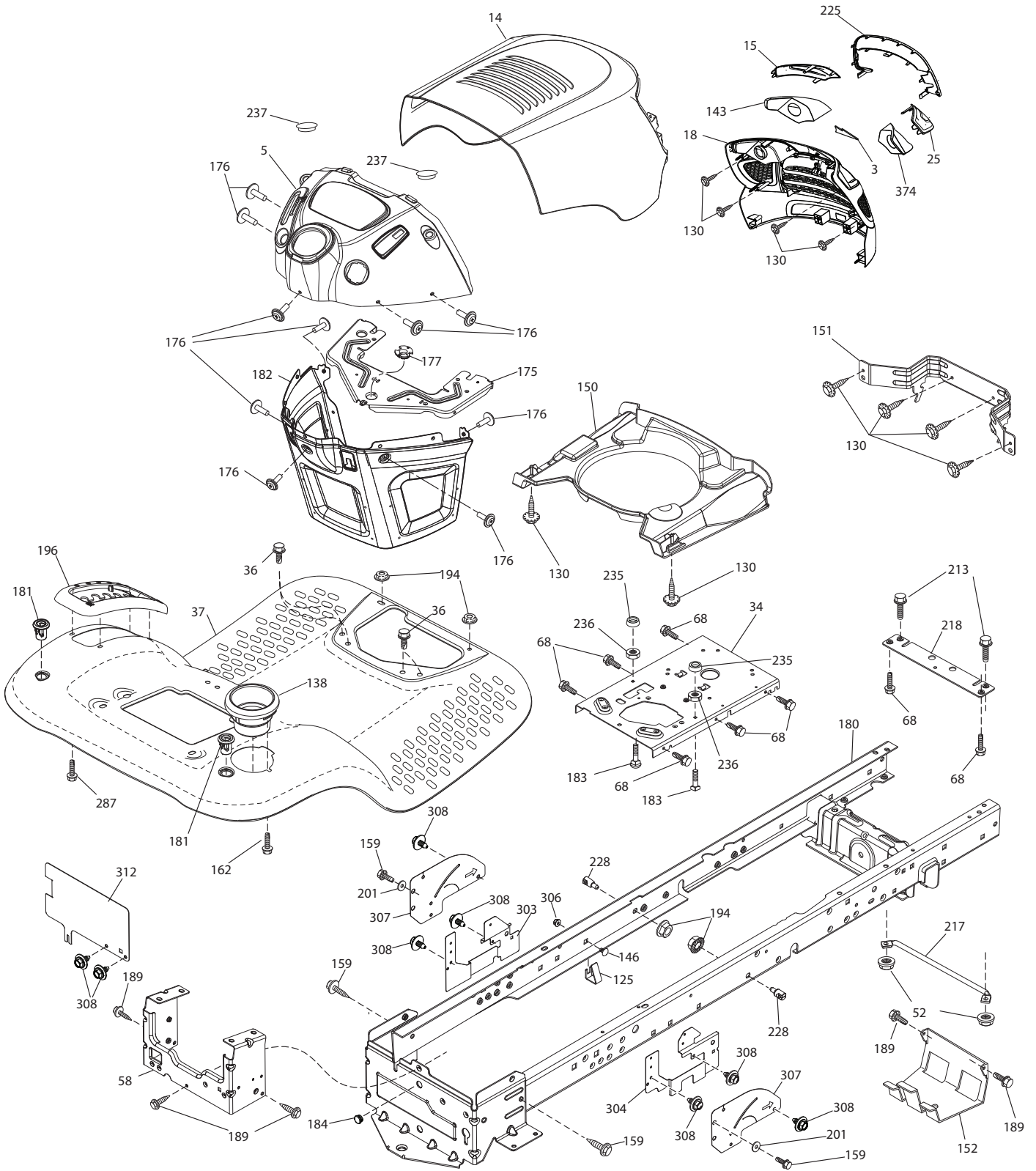


**TRACTOR - - MODEL NO. M110-97T CLASSIC (96041040600), PRODUCT NO. 960 41 04-06
ELECTRICAL 32**

| KEY NO. | PART NO. | DESCRIPTION |
|----------------|-----------------|---------------------------------|
| 1 | 532 16 34-65 | Battery |
| 2 | 874 76 04-12 | Bolt Hex Head 1/4-20 x 3/4 |
| 8 | 532 19 32-28 | Box Battery |
| 16 | 532 17 61-38 | Switch Interlock Push-In |
| 21 | 532 40 02-52 | Harness Socket Light w/4152J |
| 22 | 532 00 41-52 | Bulb Light |
| 25 | 581 49 80-01 | Cable Starter |
| 26 | 532 17 51-58 | Fuse |
| 27 | 873 51 04-00 | Nut Keps Hex 1/4-20 unc |
| 28 | 532 42 16-86 | Cable,Ground |
| 29 | 532 40 15-45 | Switch, Seat |
| 30 | 532 19 33-50 | Switch, Ign |
| 33 | 532 41 19-35 | Key/Chain |
| 34 | 532 11 07-12 | Switch Light/Reset |
| 40 | 581 02 31-01 | Harness Ign. Dash |
| 43 | 582 04 28-01 | Solenoid |
| 55 | 817 06 05-12 | Screw Thdrol 5/16-18 x 3/4 TYTT |
| 71 | 501 13 37-01 | Harness Ign. Chassis |
| 79 | 532 17 52-42 | Socket Asm |
| 87 | 532 19 78-02 | Switch Interlock Clutch Cbl |
| 90 | 532 43 53-95 | Cover Terminal |
| 92 | 532 19 66-15 | Harness Pigtail |
| 93 | 532 19 25-40 | Screw |
| 94 | 532 19 18-34 | Module reverse ROS |
| 99 | 817 67 04-12 | Screw 1/4-20 x 3/4 |
| 106 | 532 17 48-14 | Palnut 1/4 Lugs |

NOTE: All component dimensions given in U.S. inches
1 inch = 25.4 mm

TRACTOR - - MODEL NO. M110-97T CLASSIC (96041040600), PRODUCT NO. 960 41 04-06
CHASSIS AND ENCLOSURES **39**



chassis-tex_TEX LT PRED_130

**TRACTOR - - MODEL NO. M110-97T CLASSIC (96041040600), PRODUCT NO. 960 41 04-06
CHASSIS AND ENCLOSURES 39**

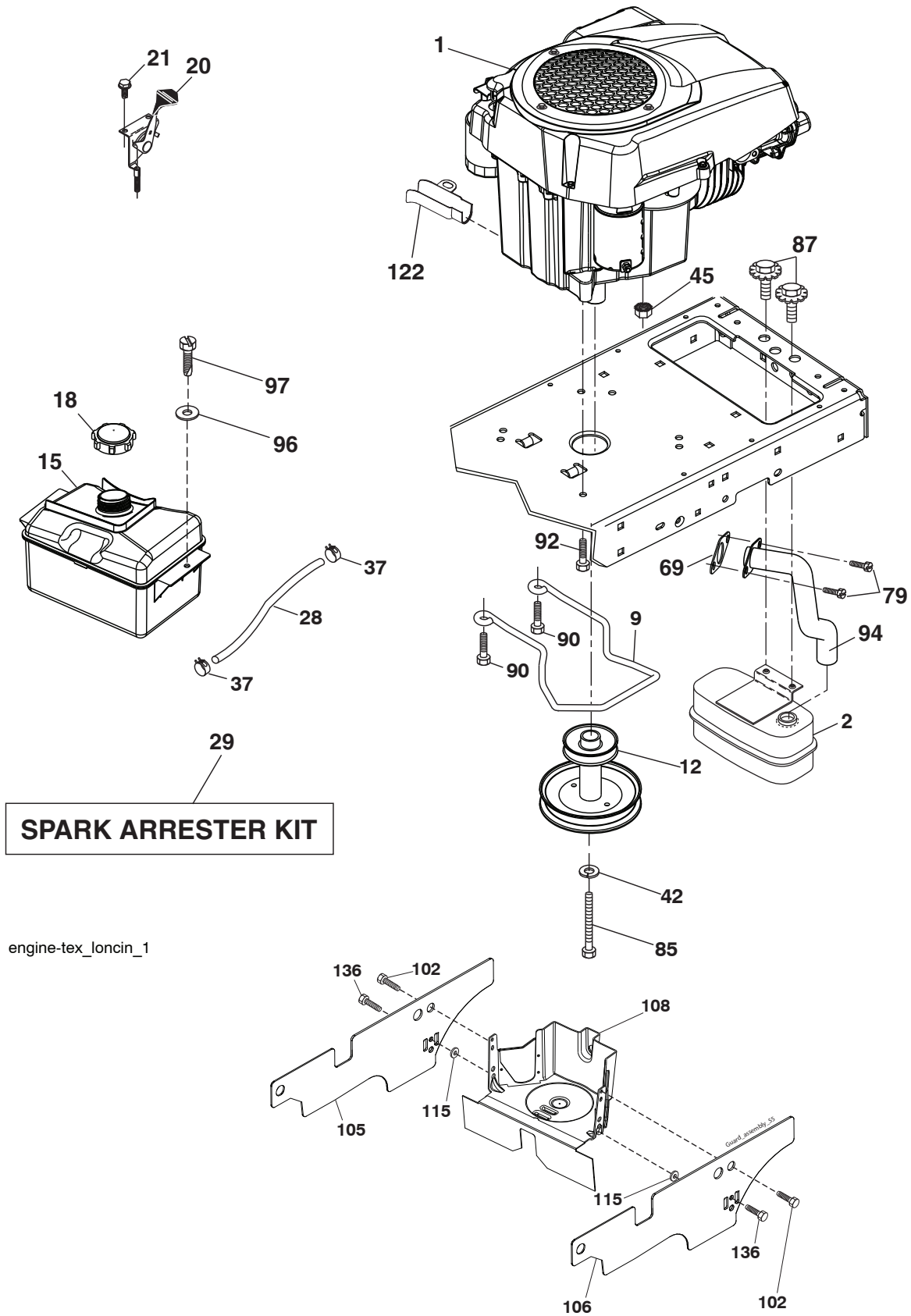
| KEY NO. | PART NO. | DESCRIPTION | KEY NO. | PART NO. | DESCRIPTION |
|------------|--------------|----------------------------|------------|--------------|-------------------------------|
| 3 | 578 89 71-01 | Emblem | 183 | 874 52 05-20 | Bolt 5/16-18 x 1-1/4 |
| 5 | 532 42 57-72 | Dash | 184 | 587 55 41-01 | Plug |
| 14 | 532 40 95-98 | Hood | 189 | 817 00 05-12 | Screw 5/16-18 x 3/4 |
| 15 | 581 05 58-01 | Lens LH | 194 | 873 90 05-00 | Nut Lock Hex Flange 5/16-18 |
| 18 | 581 05 57-01 | Grille | 196 | 532 41 45-81 | Console Asm. Deck Lift |
| 25 | 581 05 59-01 | Lens RH | 201 | 819 13 20-16 | Washer 13/32 x 1-1/4 x 16 Ga. |
| 34 | 580 91 08-01 | Plate Engine | 213 | 539 97 69-34 | HCS 5/16-18 x 3/4 Gr. 5 ZD |
| 36 | 817 06 05-12 | Screw 5/16-18 x 3/4 | 217 | 532 40 91-67 | Rod Pivot Hood |
| 37 | 532 42 09-86 | Fender | 218 | 532 19 63-95 | X-Piece Hood Stop |
| 52 | 873 68 05-00 | Nut Crown Lock 5/16 | 225 | 581 05 62-01 | Trim Ring |
| 58 | 532 41 22-80 | Drawbar | 228 | 532 19 51-61 | Stud Fastener |
| 68 | 539 99 08-58 | Screw THDROL 5/16-18 x 1/2 | 235 | 532 40 61-29 | Spacer Fender |
| 125 | 581 68 48-01 | Clip Fuel Line | 236 | 873 93 05-00 | Nut Lock 5/16-18 unc |
| 130 | 532 41 63-58 | Screw | 237 | 532 40 37-04 | Plug Mount Cargo |
| 138 | 532 40 97-30 | Cupholder | 287 | 817 60 04-06 | Screw Hex |
| 143 | 581 05 60-01 | Insert Reflection LH | 303 | 589 00 81-02 | Shield Chassis French LH |
| 146 | 581 85 79-01 | Bolt | 304 | 589 00 90-02 | Shield Chassis French RH |
| 150 | 532 40 83-10 | Air Duct | 306 | 873 90 06-00 | Nut Lock Flg. 3/8-16 unc |
| 151 | 532 18 75-68 | Bracket Pivot | 307 | 587 49 46-01 | Shield Upper |
| 152 | 532 19 95-35 | Shield Browning | 308 | 532 17 18-77 | Bolt 5/16-18 unc x 3/4 |
| 159 | 817 00 06-12 | Screw 3/8-16 x 3/4 | 312 | 589 00 67-02 | Shield Drawbar |
| 162 | 532 14 24-32 | Screw 1/4 x 1/2 | 374 | 581 05 60-02 | Insert Reflection RH |
| 175 | 532 19 94-72 | Crossmember | | | |
| 176 | 532 40 07-76 | Screw 10-24 x 5/8 | | | |
| 177 | 532 19 52-28 | Bushing Steering | | | |
| 180 | 532 41 50-63 | Chassis | | | |
| 181 | 532 40 47-96 | Bushing Mtg. Fender Crgo | | | |
| 182 | 532 40 71-76 | Dash Lower | | | |

NOTE: All component dimensions given in U.S. inches
1 inch = 25.4 mm

**TRACTOR - - MODEL NO. M110-97T CLASSIC (96041040600), PRODUCT NO. 960 41 04-06
DRIVE 40**

| KEY NO. | PART NO. | DESCRIPTION | KEY NO. | PART NO. | DESCRIPTION |
|------------|--------------|---|------------|--------------|---------------------------------|
| 1 | ----- | Transaxle, Peerless 206-565 (197941) (Order parts from transaxle manufacturer.) | 160 | 532 16 94-84 | Retainer Clip |
| 2 | 532 12 35-83 | Key Square | 161 | 532 10 57-09 | Spring, Return, Clutch |
| 15 | 819 13 13-16 | Washer 13/32 x 13/16 x 16 Ga. | 165 | 532 19 62-12 | Busing Shaft Brake Hand Control |
| 17 | 532 19 72-97 | Spring, Brake | 166 | 532 42 91-64 | Nut Push .625 |
| 22 | 532 19 76-60 | Rod Shift | 167 | 532 40 52-57 | Latch Brake Parking |
| 23 | 532 10 69-33 | Knob | 172 | 532 19 76-57 | Strap Torque LH |
| 26 | 532 19 74-55 | Spring Brake Return | 174 | 532 19 72-89 | Nut Push |
| 29 | 532 19 72-67 | Rod, Brake | 175 | 532 19 78-58 | Shaft Asm. Shift |
| 33 | 812 00 00-01 | Ring E | 176 | 532 19 62-14 | Arm Clevis Rod Shift |
| 35 | 532 40 10-31 | Rod, Brake, Park | 178 | 532 19 74-56 | Spring Shift |
| 37 | 532 12 17-49 | Washer 25/32 x 1-1/4 x 16 Ga. | 183 | 532 13 70-57 | Spacer Axle |
| 42 | 532 00 88-83 | Cover, Foot Pedal | 184 | 532 41 14-84 | Handle Parking Brake |
| 49 | 872 11 06-14 | Bolt | 185 | 872 11 06-22 | Bolt 3/8-16 unc x 2-3/4 Gr. 5 |
| 50 | 532 19 43-27 | Pulley Idler Flat | 186 | 532 19 43-21 | Spacer Retainer |
| 51 | 873 90 06-00 | Lock Nut 3/8-16 | 187 | 819 13 32-10 | Washer |
| 52 | 532 19 43-26 | Idler V-Groove | 188 | 582 21 70-01 | Link Clutch Ground Drive, Long |
| 56 | 532 19 43-46 | V-Belt, Drive | 189 | 532 19 43-17 | Bellcrank Ground Drive |
| 61 | 532 12 36-66 | Pulley Transaxle | 190 | 532 19 43-18 | Keeper Bellcrank Ground Drive |
| 64 | 532 19 62-00 | Shaft Asm. Pedal Brake Control | 192 | 532 15 03-60 | Nut Lock Center 1/4-28 Fnthd |
| 70 | 532 41 12-90 | Console Shift | 193 | 817 06 05-12 | Screw 5/16-18 x 3/4 |
| 73 | 874 49 05-40 | Bolt Hex Flgd 5/16-18 x 2-1/2 Gr. 5 | 195 | 532 19 73-32 | Bracket Brake Rod |
| 74 | 532 14 24-32 | Screw Hex Wsh 1/4 x 1/2 | 202 | 532 19 78-59 | Link Transaxle |
| 116 | 873 90 05-00 | Nut Lock Hex Flange 5/16-18 | 203 | 819 11 11-16 | Washer 11/32 x 11/16 x 16 Ga. |
| 125 | 817 00 05-12 | Screw 5/16-18 x 3/4 | 205 | 532 12 17-48 | Washer 25/32 x 1-5/8 16 Ga. |
| 134 | 532 19 78-57 | Asm Shift | 221 | 532 40 31-87 | Retainer Spring Clip Handle |
| 139 | 874 55 04-12 | Bolt 1/4-28 unfl Gr. 8 w/Patch | 232 | 874 78 07-16 | Bolt Hex 7/16-14 x 1 Gr. 5 |
| 140 | 810 04 04-00 | Washer Lock Hvy Helical 1/4 | 233 | 532 40 52-96 | Washer Serrated |
| 141 | 819 09 12-10 | Washer 9/32 x 3/4 x 10 Ga. | 263 | 817 00 06-12 | Screw Hexwsh THDR 3/8-16 x 3/4 |
| 155 | 812 00 00-28 | Ring Retainer | 268 | 532 18 24-02 | Guard Muffler |
| 157 | 532 10 57-01 | Washer Plate Shift | | | |
| 158 | 532 19 43-52 | Belt Keeper | | | |
| 159 | 876 02 04-12 | Pin Cotter 1/8 x 3/4 | | | |

NOTE: All component dimensions given in U.S. inches
1 inch = 25.4 mm



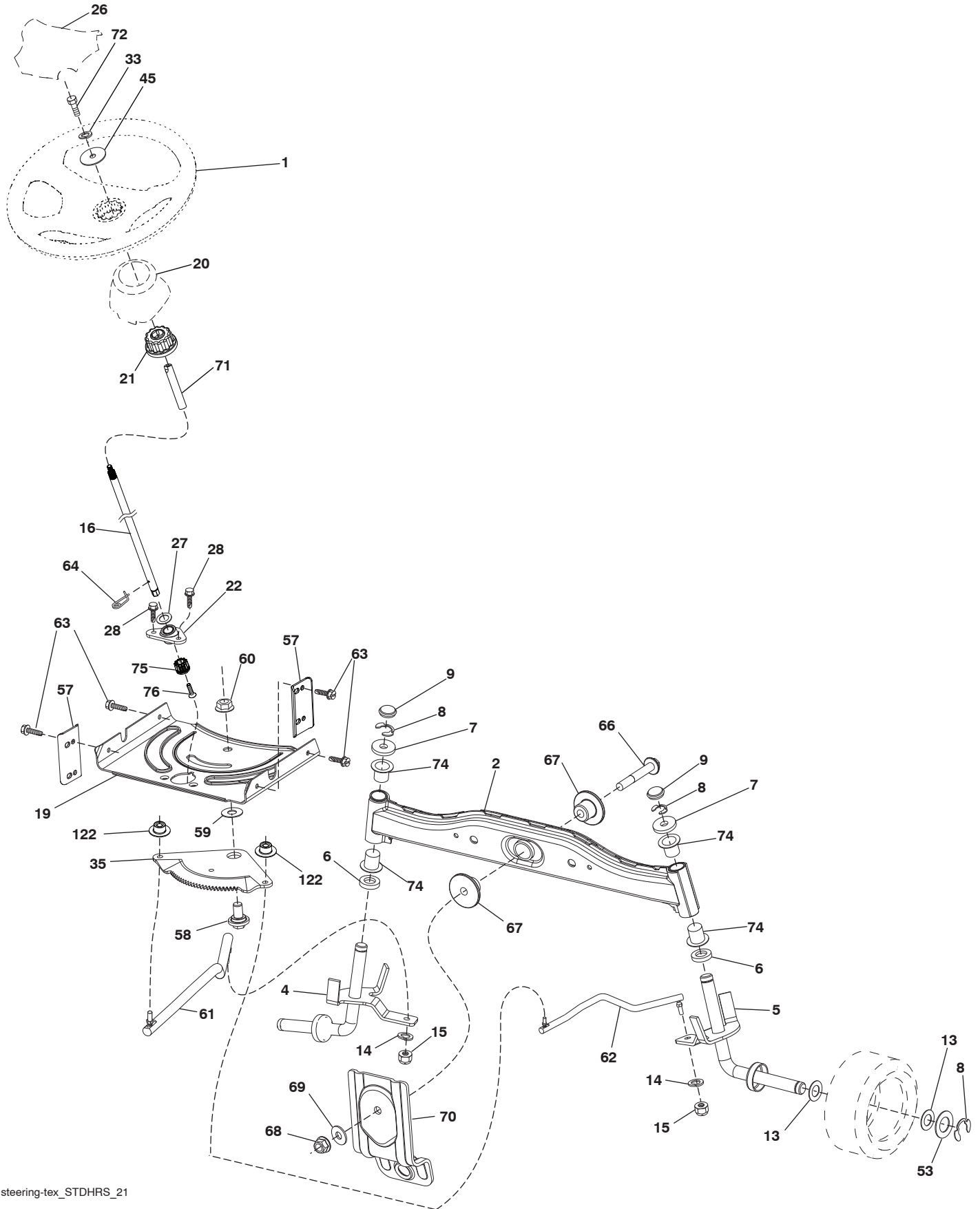
engine-tex_loncin_1

**TRACTOR - - MODEL NO. M110-97T CLASSIC (96041040600), PRODUCT NO. 960 41 04-06
ENGINE 24**

| KEY NO. | PART NO. | DESCRIPTION |
|------------|--------------|-----------------------------------|
| 1 | — — — — — | Engine SVC LLC 591070901 |
| 2 | 532 18 86-55 | Muffler |
| 9 | 582 54 03-02 | Keeper Belt Engine |
| 12 | 586 72 90-01 | Pulley Engine |
| 15 | 581 28 99-01 | Tank Fuel 1.5 |
| 18 | 532 43 02-20 | Cap Asm |
| 20 | 532 18 38-97 | Control Throttle |
| 21 | 532 41 63-58 | Screw #10 x .750 BOS Thread |
| 28 | 532 13 70-40 | Fuel Line |
| 29 | 532 13 71-80 | Spark Arrester Kit |
| 37 | 532 12 34-87 | Clamp Hose |
| 42 | 539 99 02-47 | Washer SLW STD 7/16 |
| 45 | 593 35 64-01 | Nut Hex Flange M6 Serrated |
| 69 | 590 86 35-01 | Gasket |
| 79 | 532 18 39-06 | Screw Socket 5/16-18 x 1 |
| 85 | 501 60 65-01 | Bolt Hex 7/16-20 x 4 Gr. 5 1.5 |
| 87 | 532 17 18-77 | Bolt 5/16-18 unc x 3/4 |
| 90 | 817 00 06-16 | Screw 3/8-16 x 1 |
| 92 | 817 12 06-16 | Screw 3/8-16 x 1 |
| 94 | 590 86 46-01 | Tube Exhaust |
| 96 | 819 09 14-16 | Washer 9/32 x 7/8 x 16 Ga. |
| 97 | 817 67 04-12 | Screw Hexwsh Thdrol 1/4-20 x 3/4 |
| 102 | 817 00 05-12 | Screw 5/16-18 x 3/4 |
| 105 | 501 26 72-02 | Shield Side LH |
| 106 | 501 26 82-02 | Shield Side RH |
| 108 | 587 17 95-09 | Cover Eng. Pulley w/SHLD 38", 42" |
| 115 | 532 43 17-61 | Palnut #10 |
| 122 | 532 42 19-22 | Extension Drain Oil |
| 136 | 532 42 17-56 | Screw, #10 0.500, BOS |

NOTE: All component dimensions given in U.S. inches
1 inch = 25.4 mm

TRACTOR - - MODEL NO. M110-97T CLASSIC (96041040600), PRODUCT NO. 960 41 04-06
STEERING ASSEMBLY **41**



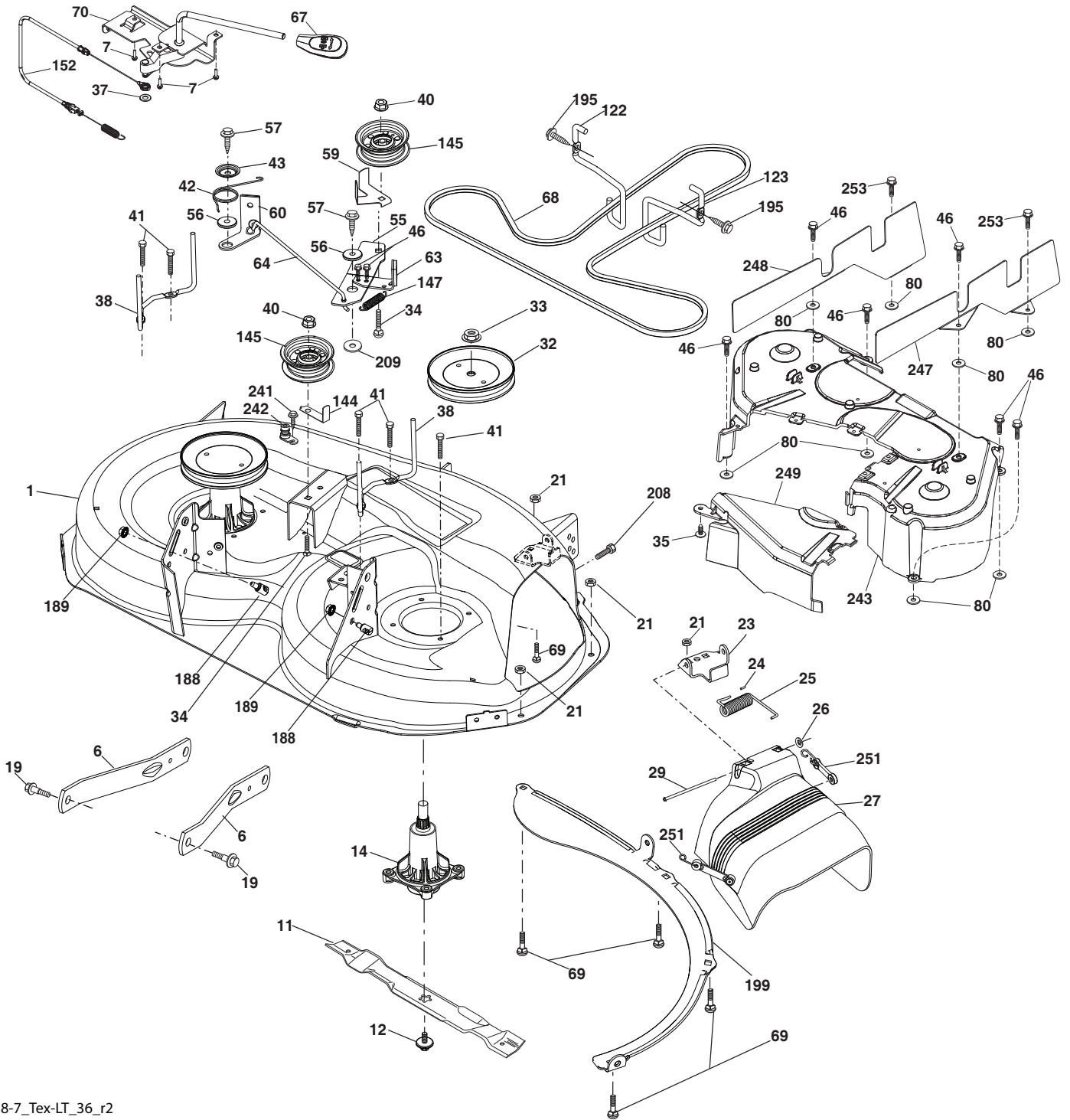
steering-tex_STDHRS_21

**TRACTOR - - MODEL NO. M110-97T CLASSIC (96041040600), PRODUCT NO. 960 41 04-06
STEERING ASSEMBLY 41**

| KEY NO. | PART NO. | DESCRIPTION |
|----------------|-----------------|-------------------------------------|
| 1 | 532 42 45-43 | Wheel, Steering |
| 2 | 532 41 81-68 | Axle Asm., Front |
| 4 | 532 40 30-87 | Spindle Asm., LH |
| 5 | 532 40 30-88 | Spindle Asm., RH |
| 6 | 532 00 62-66 | Washer, Thrust .75 x 1.230 |
| 7 | 532 12 17-48 | Washer 25/32 x 1-5/8 x 16 Ga. |
| 8 | 812 00 00-29 | Ring, Klip #T5304-75 |
| 9 | 532 12 12-32 | Cap, Spindle |
| 13 | 532 12 17-49 | Washer, 25/32 x 1-1/4 x 16 Ga. |
| 14 | 539 99 01-18 | Washer, SLW ZD 3/8 |
| 15 | 873 54 06-00 | Nut, Crown Lock 3/8-24 unf |
| 16 | 585 86 92-02 | Steering Shaft |
| 19 | 532 19 47-29 | Plate Steering |
| 20 | 532 40 97-63 | Boot, Steering |
| 21 | 532 18 67-37 | Adapter, Wheel Steering |
| 22 | 585 02 98-02 | Bearing |
| 26 | 532 42 46-91 | Insert, Wheel Steering |
| 27 | 819 21 16-16 | Washer 21 x 32 x 1 x 16 Ga. |
| 28 | 817 00 06-12 | Screw 3/8-16 x 3/4 |
| 33 | 539 99 01-87 | Washer Lock 5/16 |
| 35 | 532 19 47-32 | Gear, Sector Plate |
| 45 | 819 11 38-12 | Washer 11/32 x 3/8 x 12 Ga. |
| 53 | 532 18 89-67 | Washer Hardened .793 x 1.637 x .060 |
| 57 | 532 40 74-65 | Bracket Upstop |
| 58 | 532 19 47-47 | Bolt Shoulder Sector Pivot CFM |
| 59 | 532 19 47-48 | Washer Thrust Sector Steering |
| 60 | 873 97 10-00 | Nut Flange Lock 5/8-11 |
| 61 | 532 19 47-40 | Draglink, LH |
| 62 | 532 19 47-41 | Draglink, RH |
| 63 | 817 00 05-12 | Screw 5/16-18 x 3/4 |
| 64 | 532 19 98-49 | Retainer Clip Spring Steering |
| 66 | 871 02 07-48 | Bolt Hex Fghd 7/16-14 x 3 Serr |
| 67 | 532 19 47-37 | Bushing PM Front Axle |
| 68 | 873 90 07-00 | Nut Lock Flange 7/16-14 Gr. 5 |
| 69 | 532 19 91-62 | Washer 1.5 x .505 x .118 |
| 70 | 585 33 88-01 | Bracket Deck Susp. Front |
| 71 | 532 19 07-52 | Shaft Extension Steering |
| 72 | 532 42 89-82 | Bolt Fin Hex 5/16-18 x 3/4 w/Patch |
| 74 | 532 00 33-66 | Bearing |
| 75 | 580 68 37-01 | Pinion |
| 76 | 580 68 36-01 | Screw Head Sock |
| 122 | 532 44 49-62 | Cap Gear |

NOTE: All component dimensions given in U.S. inches
1 inch = 25.4 mm

TRACTOR - - MODEL NO. M110-97T CLASSIC (96041040600), PRODUCT NO. 960 41 04-06
MOWER DECK **44**



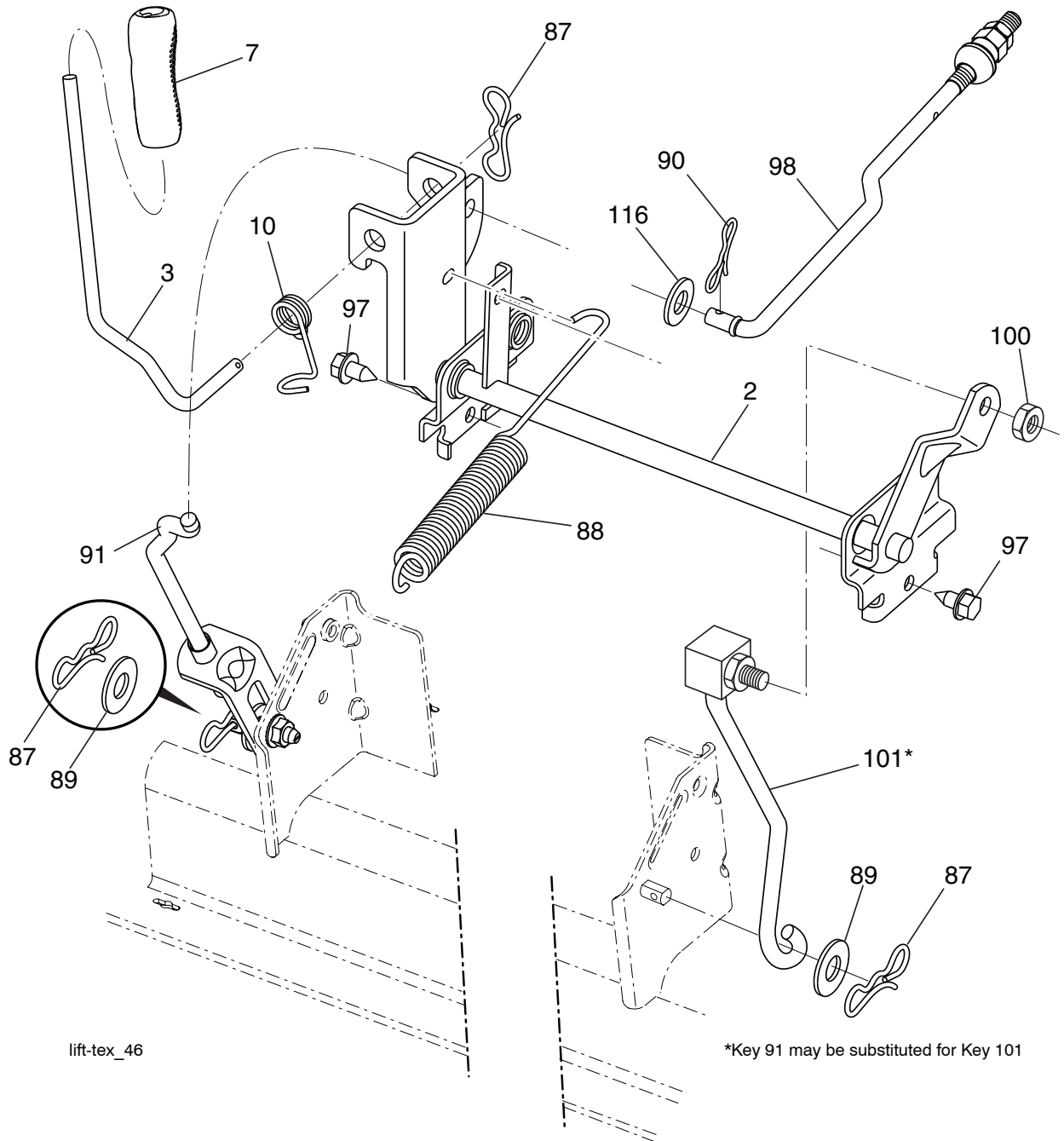
38-7_Tex-LT_36_r2

**TRACTOR - - MODEL NO. M110-97T CLASSIC (96041040600), PRODUCT NO. 960 41 04-06
MOWER DECK 44**

| KEY NO. | PART NO. | DESCRIPTION | KEY NO. | PART NO. | DESCRIPTION |
|------------|--------------|--|------------|--------------|--------------------------------------|
| 1 | 532 40 78-15 | Kit, SVC Weldment | 64 | 532 19 97-90 | Link Brake |
| 6 | 532 19 51-86 | Arm Suspension | 67 | 532 40 30-12 | Handle Clutch Cable |
| 7 | 596 32 17-01 | Screw #10 x 0.750 BOS Thread | 68 | 532 40 83-81 | V-Belt |
| 11 | 581 11 63-01 | Blade 38" 2N1 Premium | 69 | 596 13 64-01 | Bolt, Cup Head, 3/8-18 x 5/8 |
| 12 | 584 30 93-01 | Screw 7/16-20 x 1 Hx | 70 | 532 40 12-46 | Clutch Asm. Manual |
| 14 | 587 81 97-01 | Kit, Mandrel, NonGrease Tall (includes mandrel and bolts) | 80 | 532 42 30-62 | Palnut 1/4 |
| 19 | 532 19 65-39 | Bolt, Shoulder | 122 | 532 19 72-58 | Keeper Belt Engine LH |
| 21 | 596 04 05-01 | Nut, Lock, Hex. Prvl. 5/16-18 | 123 | 532 19 72-59 | Keeper Belt Engine RH |
| 23 | 532 19 25-57 | Bracket, Deflector | 144 | 532 19 34-14 | Keeper Belt |
| 24 | 532 10 53-04 | Cap, Sleeve | 145 | 532 19 31-97 | Pulley Idler |
| 25 | 532 19 70-26 | Spring, Torsion, Deflector | 147 | 532 40 18-72 | Spring Return |
| 26 | 532 11 04-52 | Nut, Push | 152 | 532 43 51-11 | Manual Clutch Cable |
| 27 | 597 31 66-01 | Shield, Asm. Deflctr. | 188 | 532 19 51-61 | Stud Fastener |
| 29 | 595 29 70-01 | Rod, Hinge | 189 | 596 13 57-01 | Nut, Lock. Prvl. Torq. 5/16-18 x .68 |
| 32 | 532 19 97-89 | Pulley, Mandrel | 195 | 817 00 06-12 | Screw 3/8-16 x 3/4 |
| 33 | 596 13 48-01 | Nut, Hex 9/16- 18 x 1.01 | 199 | 532 40 00-95 | Baffle Vortex |
| 34 | 596 13 61-01 | Bolt, Cup Head, 3/8-16 x 1-1/2" | 208 | 817 67 06-08 | Screw THRDL |
| 35 | 532 13 38-35 | Fastener | 209 | 596 13 55-01 | Washer, 13/32 x 2 Clear, Zinc |
| 37 | 596 56 53-01 | Washer, 3/8 x 0.08 In. St. Clr. Zinc | 241 | 532 15 29-27 | Screw TT #10-32.5 3/8 |
| 38 | 532 19 95-41 | Keeper Belt LH Mandrel | 242 | 532 41 55-98 | Port Washout |
| 40 | 873 90 06-00 | Nut, Lock Flg. 3/8-16 unc | 243 | 532 40 65-10 | Cover Deck 38 |
| 41 | 584 95 39-01 | Bolt Hex Wshr | 247 | 589 00 95-02 | Shield Deck LH |
| 42 | 532 19 84-10 | Spring Torsion Brake | 248 | 589 00 94-02 | Shield Deck RH |
| 43 | 532 19 72-56 | Spring Torsion Retainer | 249 | 532 40 65-14 | Cover Cable Clutch |
| 46 | 532 13 77-29 | Screw 1/4 - 20 x 5/8 | 251 | 532 43 60-87 | Kit Bungee |
| 55 | 532 19 72-49 | Arm, Idler | 253 | 532 42 73-50 | Rivet |
| 56 | 532 19 90-92 | Spacer, Retainer | -- | 532 40 04-22 | Replacement Mower, Complete |
| 57 | 817 00 06-16 | Screw 3/8-16 x 1 | | | |
| 59 | 532 14 10-43 | Guard, Tuv. Idler | | | |
| 60 | 532 19 94-71 | Arm Brake Mower | | | |
| 63 | 532 19 94-70 | Arm Brake Mower | | | |

NOTE: All component dimensions given in U.S. inches
1 inch = 25.4 mm

TRACTOR -- MODEL NO. M110-97T CLASSIC (96041040600), PRODUCT NO. 960 41 04-06
MOWER LIFT 45

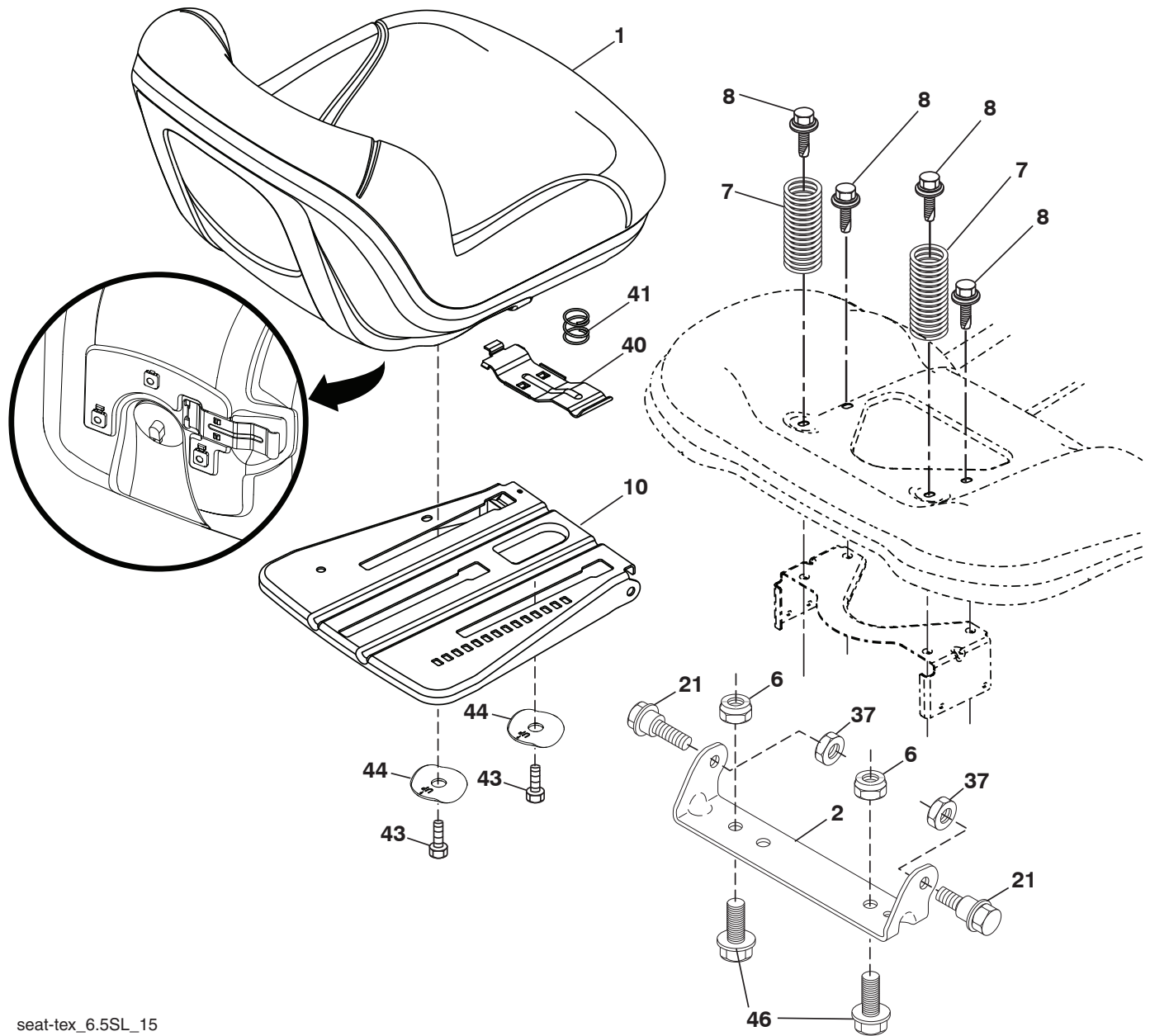


| KEY NO. | PART NO. | DESCRIPTION |
|---------|--------------|------------------------------|
| 2 | 532 42 20-27 | Shaft Asm., Lift |
| 3 | 532 19 52-31 | Lever Asm., Lift RH |
| 7 | 580 96 23-01 | Grip, Lever |
| 10 | 532 19 63-14 | Spring Torsion |
| 87 | 532 19 42-09 | Pin Cotter 7/16 Bow Tie Lock |
| 88 | 532 41-07-10 | Spring Lift Assist |
| 89 | 819 19 19-12 | Washer Clear Zinc |
| 90 | 532 19 42-08 | Pin Cotter 5/16 Bow Tie Lock |

| KEY NO. | PART NO. | DESCRIPTION |
|---------|--------------|-----------------------------|
| 91 | 532 19 51-81 | Link Lift Susp Mower Rear |
| 97 | 817 00 06-12 | Screw 3/8-16 x .75 |
| 98 | 532 19 52-70 | Link Lift Susp. Front Mower |
| 100 | 873 93 06-00 | Nut Centerlock 3/8-16 |
| 101 | 532 40-70-03 | Link Asm. Lift FXD |
| 116 | 594 97 65-01 | Washer 15/32 x 15/16 x .065 |

NOTE: All component dimensions given in U.S. inches
 1 inch = 25.4 mm

**TRACTOR -- MODEL NO. M110-97T CLASSIC (96041040600), PRODUCT NO. 960 41 04-06
SEAT ASSEMBLY 42**



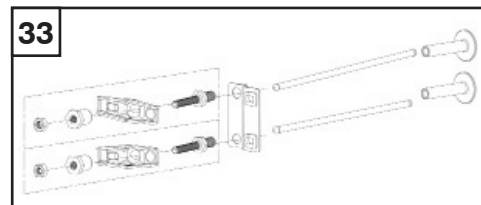
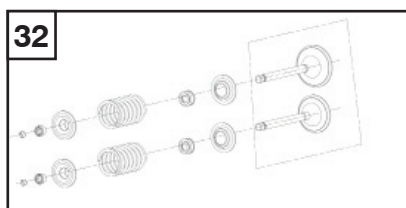
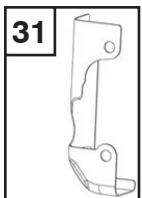
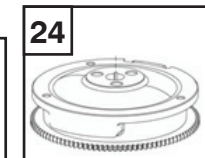
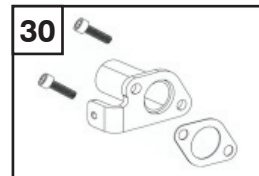
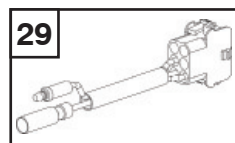
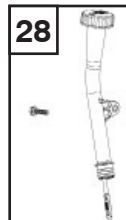
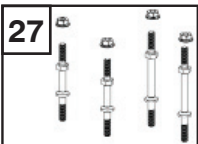
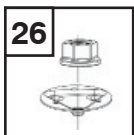
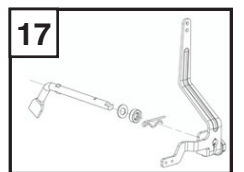
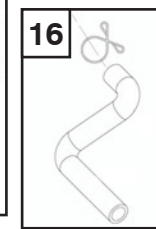
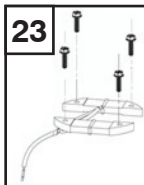
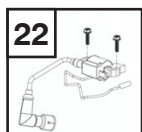
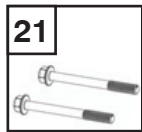
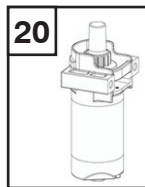
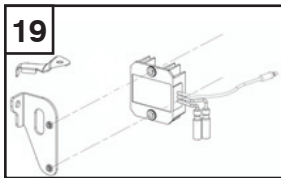
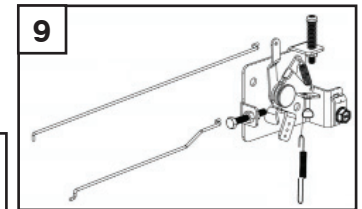
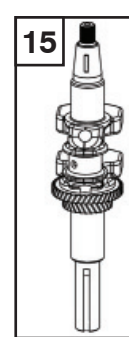
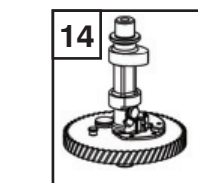
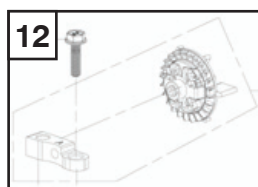
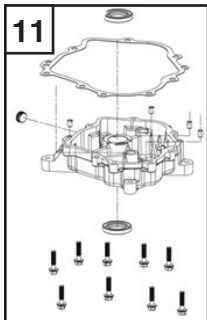
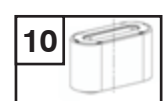
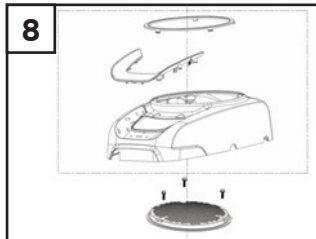
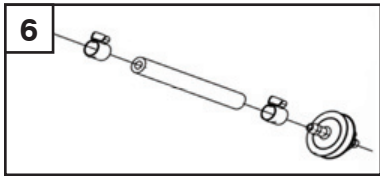
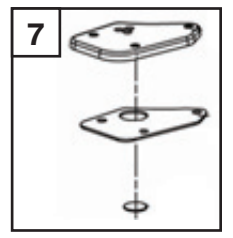
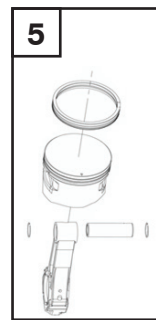
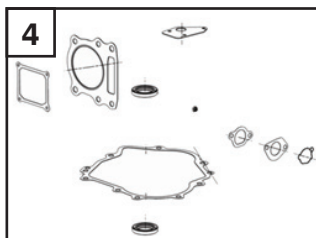
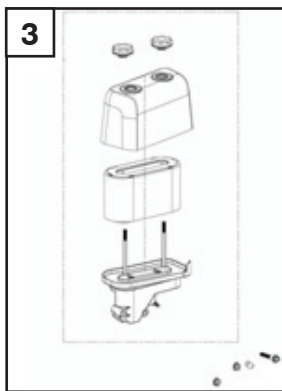
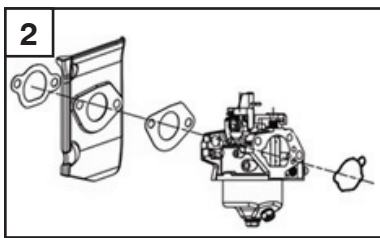
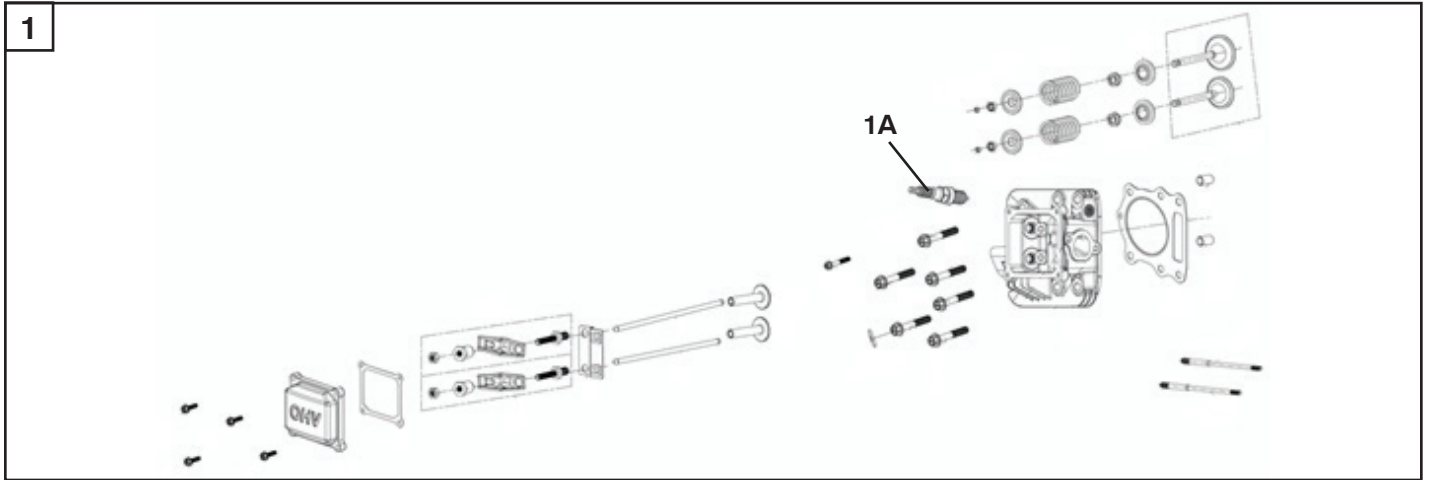
seat-tex_6.5SL_15

| KEY NO. | PART NO. | DESCRIPTION |
|---------|--------------|-------------------------------|
| 1 | 581 46 20-01 | Seat |
| 2 | 532 18 01-66 | Bracket Pivot Fender |
| 6 | 873 80 06-00 | Nut, Lock w/Ins. 3/8-16 unc |
| 7 | 589 48 35-01 | Spring, Seat Cprsn |
| 8 | 532 17 18-77 | Bolt 5/16-18 unc x 3/4 w/Sems |
| 10 | 596 65 74-02 | Plate, Seat |
| 21 | 587 90 78-01 | Bolt, Shoulder 5/16-18 x 5/8 |
| 37 | 873 80 05-00 | Nut, Lock 5/16-18 unc |

| KEY NO. | PART NO. | DESCRIPTION |
|---------|--------------|-------------------------------|
| 40 | 532 19 76-61 | Handle Slide |
| 41 | 532 19 82-00 | Spring Latch |
| 43 | 874 76 06-12 | Bolt Fin Hex 3/8-16 unc x 3/4 |
| 44 | 501 05 18-01 | Washer Winged 3/8 ID 1.5 OD |
| 46 | 588 09 04-01 | Bolt 3/8-16 x 1, 1.25 OD |

NOTE: All component dimensions given in U.S. inches
1 inch = 25.4 mm

TRACTOR - - MODEL NO. M110-97T CLASSIC (96041040600), PRODUCT NO. 960 41 04-06
ENGINE (352 CC)



**TRACTOR - - MODEL NO. M110-97T CLASSIC (96041040600), PRODUCT NO. 960 41 04-06
ENGINE (352 CC)**

| ITEM NO. | PART NO. | DESCRIPTION | QTY. |
|-----------------|-----------------|--|-------------|
| 1 | 590903601 | CYLINDER HEAD COMP KIT | 1 |
| 1A | 591165501 | SPARK PLUG | 1 |
| 2 | 590903701 | CARBURETOR KIT | 1 |
| 3 | 590903901 | AIR CLEANER KIT | 1 |
| 4 | 590904201 | GASKET AND SEAL KIT | 1 |
| 5 | 590904301 | PISTON AND RING SET,PISTON KIT | 1 |
| 6 | 590904401 | FUEL SYSTEM KIT | 1 |
| 7 | 590904701 | COVER COMP BREATHER AND VALVE, BREATHER CHAMBER KIT | 1 |
| 8 | 590904801 | START COVER KIT | 1 |
| 9 | 590966001 | THROTTLE AND CHOKE ROD KIT | 1 |
| 10 | 590970601 | AIR FILTER | 1 |
| 11 | 590967901 | CRANKCASE COVER KIT | 1 |
| 12 | 590968001 | GOVENOR GEAR KIT | 1 |
| 13 | 590968101 | BALANCING SHAFT KIT | 1 |
| 14 | 590968201 | CAMSHAFT | 1 |
| 15 | 590968301 | CRANKSHAFT | 1 |
| 16 | 590968401 | BREATHER TUBE KIT | 1 |
| 17 | 591165601 | SPEED REGULATING ARM KIT | 1 |
| 18 | 590968601 | HEXAGON BOLT WITH FLANGE | 1 |
| 19 | 590968801 | VOLTAGE REGULATOR KIT | 1 |
| 20 | 590968901 | STARTER MOTOR KIT | 1 |
| 21 | 592951201 | STARTER MOTOR BOLTS | 1 |
| 22 | 590969001 | IGNITION COIL KIT | 1 |
| 23 | 590969101 | CHARGING ARMATURE KIT | 1 |
| 24 | 590969201 | FLYWHEEL KIT | 1 |
| 25 | 590969901 | IMPELLER KIT | 1 |
| 26 | 590969601 | STARTING DISC KIT | 1 |
| 27 | 590969701 | STUD KIT | 1 |
| 28 | 590969801 | FILL TUBE KIT | 1 |
| 29 | 590970001 | CONNECTING WIRE | 1 |
| 30 | 590970101 | EXHAUST PIPE KIT | 1 |
| 31 | 590970201 | AIR DEFLECTOR | 1 |
| 32 | 590970301 | VALVE KIT | 1 |
| 33 | 590970401 | ROCKER ARM KIT | 1 |

