

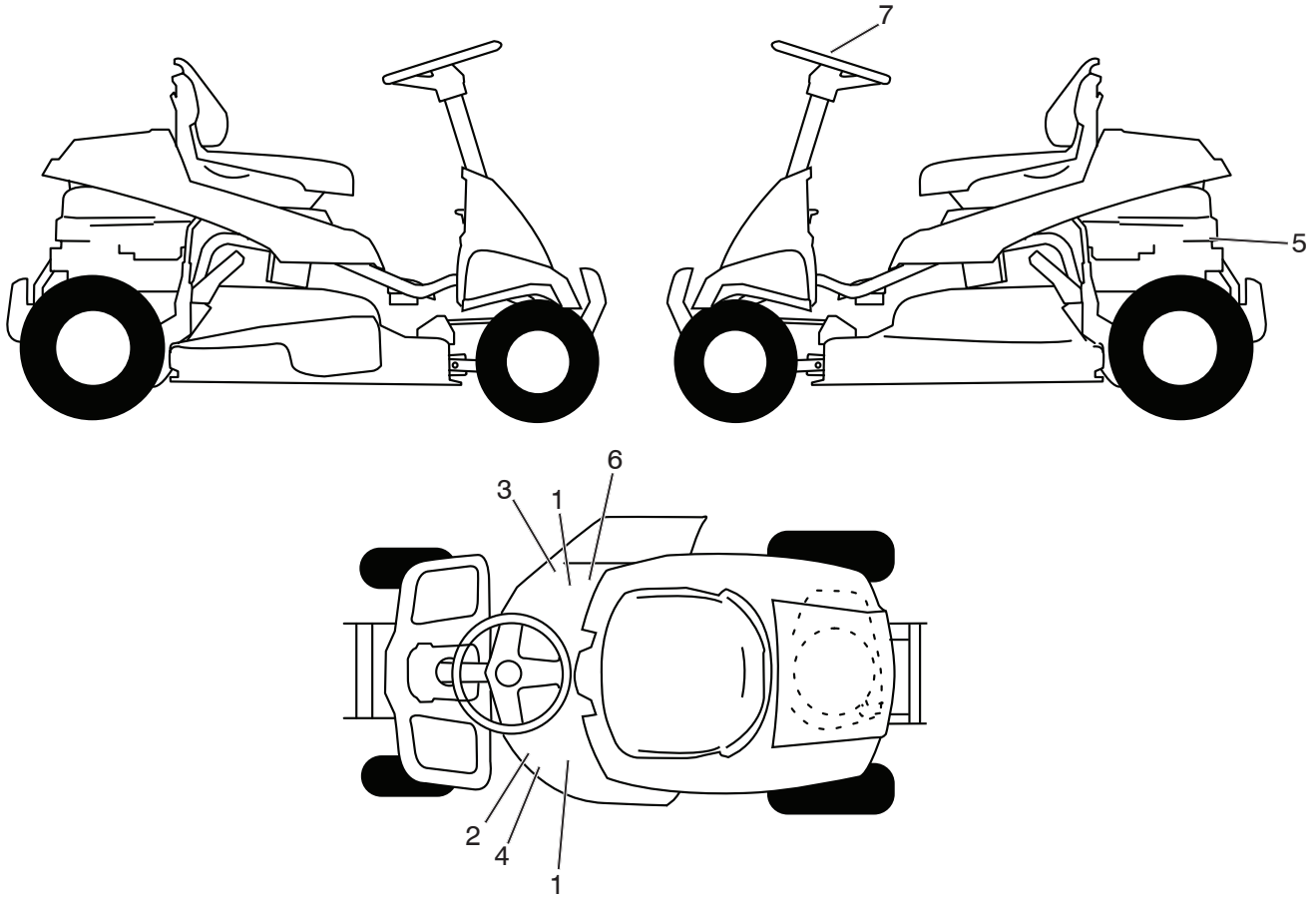
# **ILLUSTRATED PARTS LIST**

**MODEL NO. 96021003200**

**CUSTOMER CATALOG NO. M105-77XC**

**PRODUCT NO. 960 21 00-32**

**RIDING MOWER-- MODEL NO. M105-77XC (96021003200), PRODUCT NO. 9602100-32  
DECALS 27**

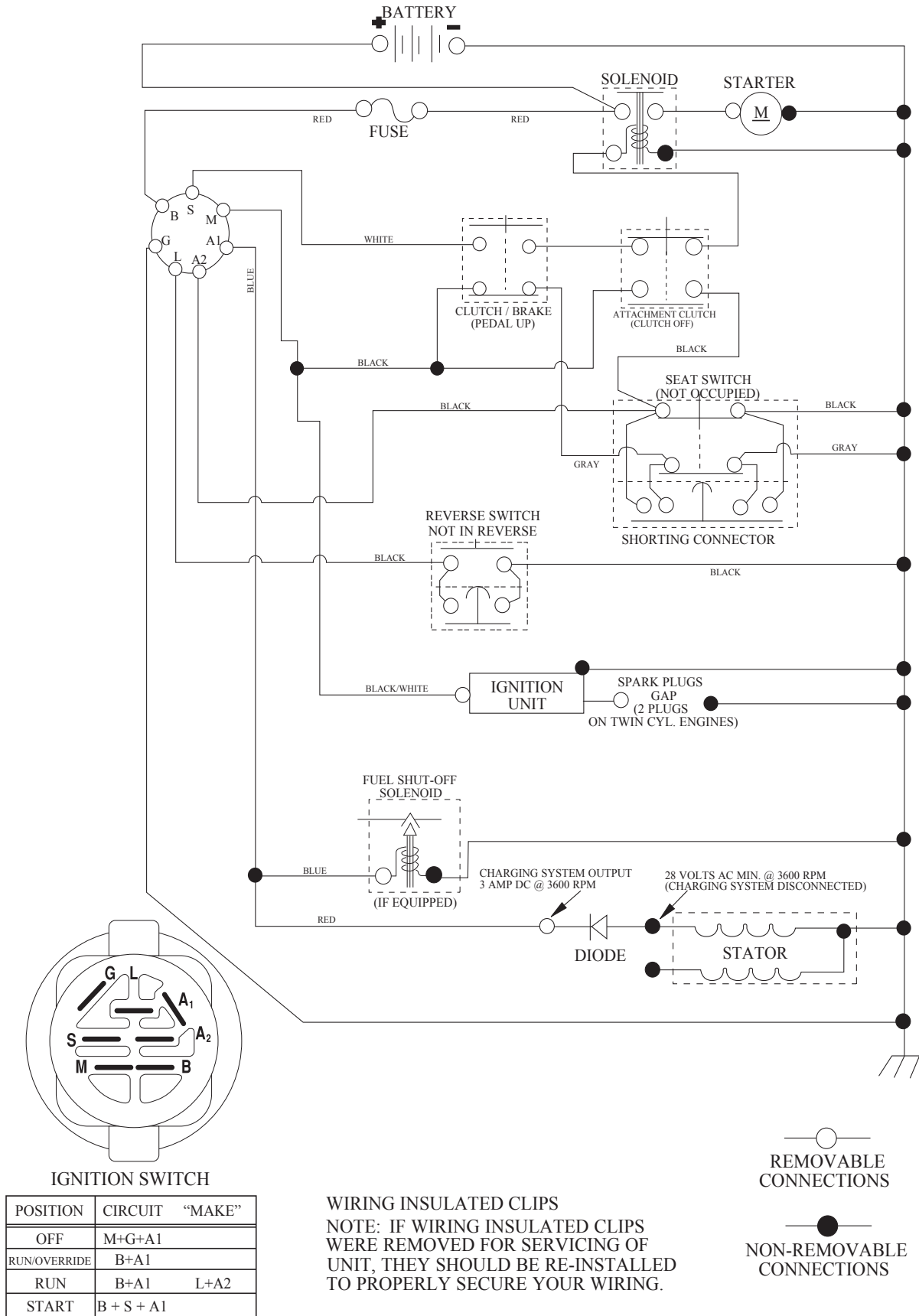


KEY PART NO.	PART NO.	DESCRIPTION
1	581 72 43-01	DECAL, DECK NO STEP
2	532 44 14-97	DECAL, V-BELT SCH
3	581 57 93-01	DECAL, WARN. DEFLECT/CTFGR
4	532 44 75-48	DECAL, DECK/DEFLECT
5	585 56 11-01	DECAL, ENGINE H.P.
6	584 90 46-01	DECAL, DECK/DEFLECT WARNING
7	501 49 43-01	DECAL, STEERING WHEEL
--	588 89 70-40	MANUAL OPER.MCC.EURO
--	588 89 70-50	MANUAL OPER.MCC.SCAN
--	588 89 70-20	MANUAL OPER.MCC.EBLOC
--	588 89 70-30	MANUAL OPER.MCC.BALTIC

**NOTE:** All component dimensions given in U.S. inches  
1 inch = 25.4 mm

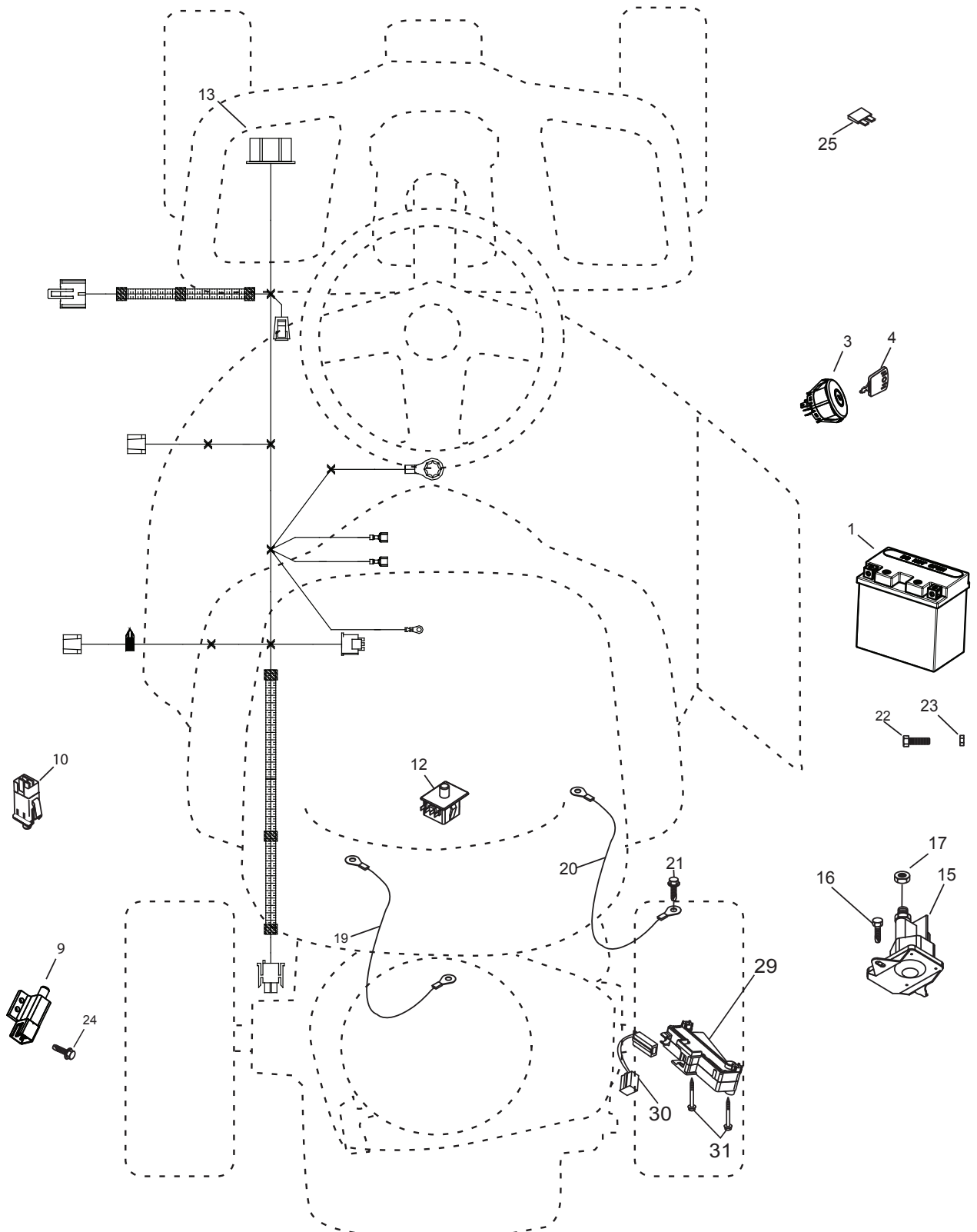
# RIDING MOWER--MODEL NO.M105-77XC (96021003200), PRODUCT NO.96021 00-32 SCHEMATIC 38

SCH24



RIDING MOWER--MODEL NO.M105-77XC (96021003200),PRODUCT NO.9602100-32  
ELECTRICAL **32**

LRV3A

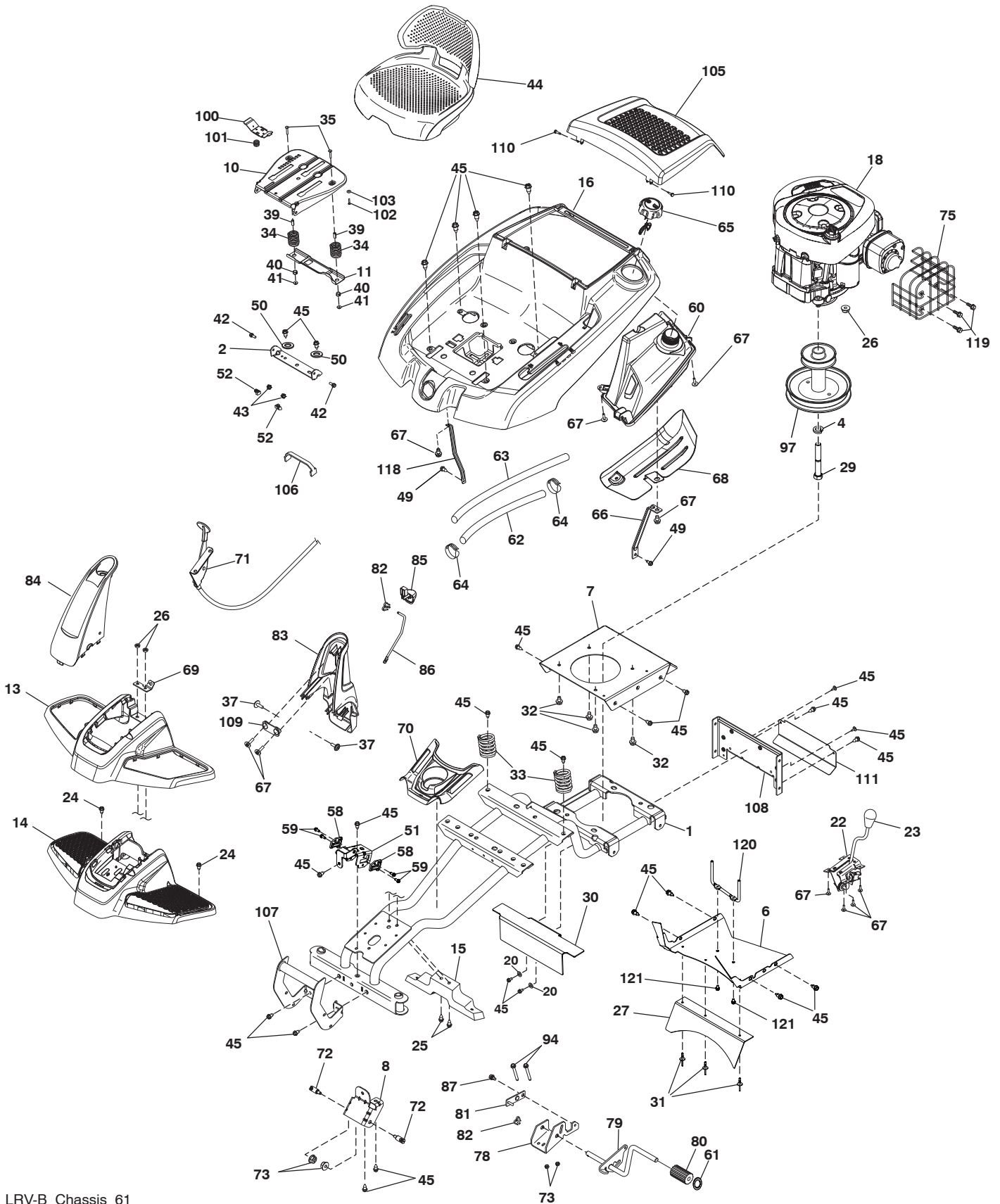


**RIDING MOWER--MODEL NO.M105-77XC (96021003200), PRODUCT NO.96021 00-32  
ELECTRICAL 32**

KEY NO.	PART NO.	DESCRIPTION
1	532 43 65-51	BATTERY
3	532 19 33-50	SWITCH, IGN, DLTA, P-IN, ROS
4	532 41 19-35	KEY/CHAIN
9	532 10 95-53	SWITCH, INTLK,CL, MWR, GRY
10	532 17 61-38	SWITCH, INTERLOCK, NONC,GRAY
12	532 19 27-49	SWITCH, SEAT, DP, ROS
13	584 29 96-01	HARNESS, IGN, ELECTSTART, LRV
15	582 04 28-01	SOLENOID
16	817 00 05-12	SCREW 5/16-18 3/4
17	873 51 04-00	NUT KEPS HEX 1/4-20 UNC
19	532 42 12-99	CABLE STARTER
20	532 42 12-98	CABLE GROUND
21	817 06 05-12	SCREW 5/16-18 X 3/4
22	532 44 21-48	SCREW HEX M5X0.8.9MM
23	532 43 81-22	NUT M5
24	574 82 27-01	SCREW #10-24 X .75
25	532 43 48-99	FUSE, 10
29	532 19 18-34	MODULE REVERSE
30	581 62 52-01	JUMPER PIGTAIL
31	532 19 25-40	SCREW PLASTIC

**NOTE:** All component dimensions given in U.S. inches  
1 inch = 25.4 mm

**RIDING MOWER--MODEL NO. M105-77XC (96021003200), PRODUCT NO. 96021 00-32**  
**CHASSIS AND ENCLOSURES 39**



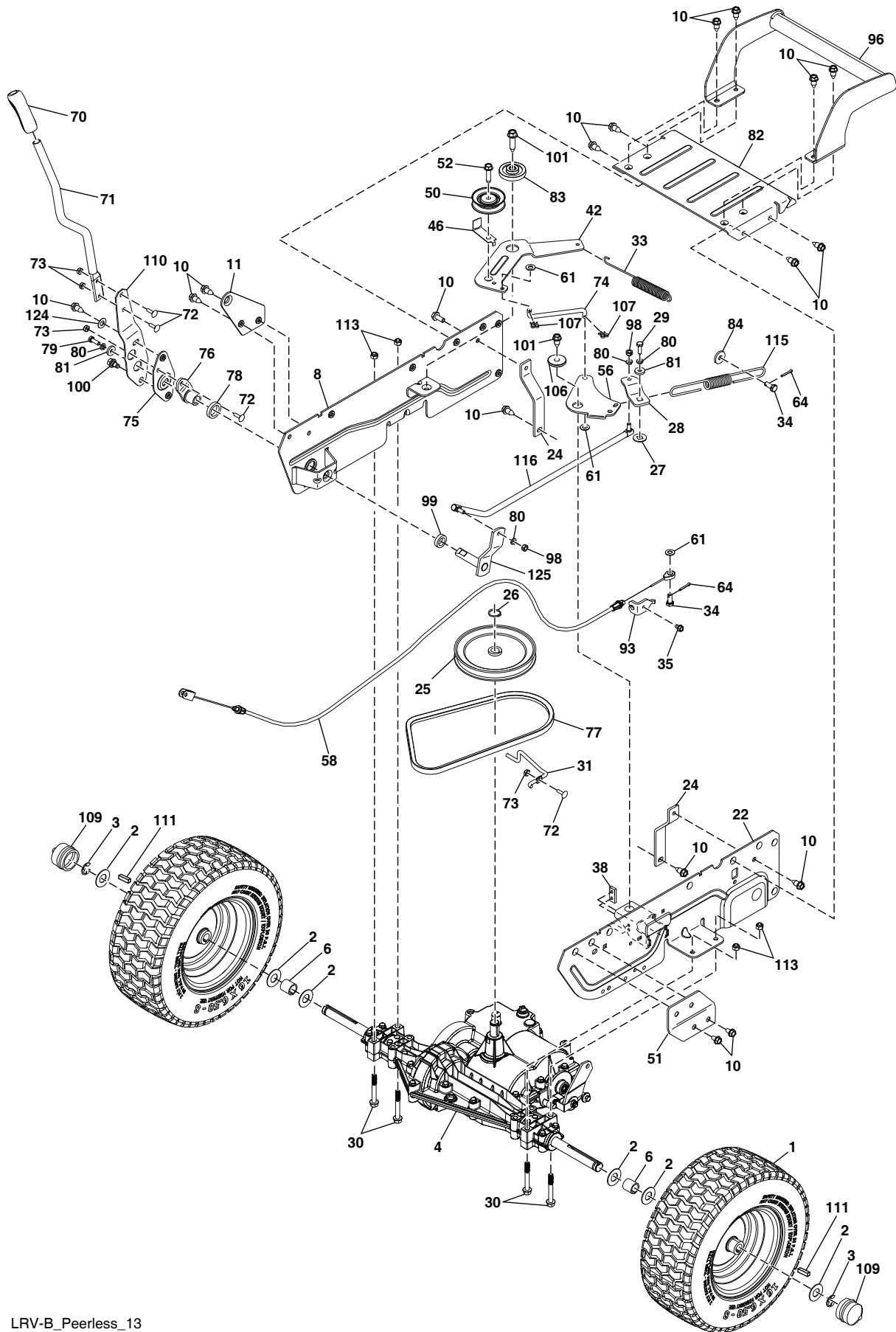
LRV-B\_Chassis\_61

**RIDING MOWER--MODEL NO. M105-77XC (96021003200), PRODUCT NO. 96021 00-32  
CHASSIS AND ENCLOSURES 39**

KEY PART NO. NO.	DESCRIPTION	KEY PART NO. NO.	DESCRIPTION
1	532 43 61-76	60	532 43 78-01
2	532 18 01-66	61	587 01 57-02
4	539 99 02-47	62	863 08 37-30
6	584 82 32-02	63	532 41 41-19
7	532 43 61-77	64	532 12 34-87
8	587 58 18-01	65	581 17 61-01
10	532 44 18-05	66	532 43 66-06
11	532 19 93-70	67	532 42 17-56
13	532 44 20-71	68	532 43 98-51
14	532 44 20-75	69	532 43 74-27
15	532 44 20-69	70	532 44 20-68
16	584 97 69-13	71	532 43 78-57
18	-----	72	532 19 51-61
		73	873 90 05-00
		75	585 88 30-01
		78	532 43 70-56
20	819 11 12-16	79	532 43 70-57
22	586 04 19-01	80	532 42 96-93
23	532 14 98-46	81	532 43 73-74
24	532 41 63-58	82	532 16 94-84
25	872 14 04-24	83	587 68 64-03
26	873 51 04-00	84	587 38 86-07
27	584 82 34-01	85	532 43 76-60
		86	532 43 87-62
29	501 60 69-01	87	532 16 54-92
		94	874 49 05-48
30	585 92 69-01	97	581 43 80-01
31	532 14 08-11	100	532 19 76-61
32	817 06 06-20	101	532 19 82-00
33	587 61 33-01	102	874 76 06-12
34	532 12 37-40	103	501 05 18-01
35	872 05 04-12	105	532 44 79-92
37	532 14 18-41	106	532 43 68-34
39	532 13 43-00	107	532 44 20-74
40	532 12 12-48	108	532 43 71-68
41	532 12 39-76	109	532 43 90-08
42	587 90 78-01	110	532 44 21-45
43	873 80 05-00	111	532 43 81-71
44	532 43 66-12	118	532 44 50-02
45	817 00 05-12	119	586 42 27-01
49	817 06 05-16	120	588 06 46-02
50	819 13 20-16	121	817 60 04-06
51	585 92 03-02		
52	532 14 50-06		
58	588 45 25-01		
59	532 13 77-29		

**NOTE:** All component dimensions given in U.S. inches  
1 inch = 25.4 mm

RIDING MOWER--MODEL NO. M105-77XC (96021003200), PRODUCT NO. 9602100-32  
DRIVE **40**









**RIDING MOWER--MODEL NO.M105-77XC (96021003200), PRODUCT NO.96021 00-32  
STEERING ASSEMBLY 41**

KEY PART NO.	PART NO.	DESCRIPTION
1	532 44 20-64	WHEEL TUBE
2	812 00 00-01	E-CLIP
3	532 18 89-67	WASHER, HARDENED
4	532 12 17-49	WASHER, 1/4 X 3/4
5	588 07 84-02	SPINDLE, RH
6	532 12 49-31	WASHER, HARDENED THRUST
7	532 12 49-37	BUSHING, STEERING COLUMN
14	819 11 12-16	WASHER 11/32 X 3/4 16 GA.
16	585 92 06-01	BEARING FLANGED
17	532 43 61-78	SUPPORT, UPPER STEERING
19	817 00 05-12	BOLT, 5/16-18 X 3/4
23	532 43 77-47	ADAPTER, STEERING WHEEL
26	532 42 45-51	WHEEL, STEERING
27	532 42 45-53	CAP, STEERING WHEEL
28	532 19 98-49	CLIP, RETAINER SPRING
29	588 07 85-02	SPINDLE, LH
30	532 19 32-68	CAP, HUB, AXLE
34	587 23 69-02	SHAFT STEERING UPPER
35	532 44 20-66	BOOT LOWER STEERING WHEEL
36	532 44 49-81	SHAFT EXTENSION STEERING SPLINE
37	747 80 51-04	HEX HEAD SCREW 5/16-18 X 6.5
38	810 04 05-00	WASHER LOCK HVY HLCL SPR 5/16
39	819 11 38-12	WASHER
41	532 43 65-90	FOAM SHAFT STEERING
43	873 54 05-00	CROWNLOCK NUT 5/16-24 UNF
46	587 46 35-01	LINK STEERING FRONT
47	589 02 85-01	SCREW FLG. LOCKING 1/4-20 X .75
48	819 09 12-10	WASHER 9/32 X 3/4 X 1.0
49	588 07 83-02	ARM STEERING UPPER
50	587 59 21-01	SCREW THDROL 5/16-18 X 1.25
51	585 92 01-02	STEERING RACK
52	580 68 36-01	SCREW HEAD SOCKET
53	580 68 37-01	PINION SHAFT STEERING
54	585 92 02-01	SUPPORT BUSHING STEERING
55	585 92 05-01	DRAG LINK RH
57	874 49 05-12	BOLT 5/16-18 X 3/4
58	873 90 05-00	NUT LOCK HEX FLANGE

**NOTE:** All component dimensions given in U.S. inches  
1 inch = 25.4 mm



**RIDING MOWER--MODEL NO.M105-77XC (96021003200), PRODUCT NO.96021 00-32  
MOWER DECK 44**

<b>KEY NO.</b>	<b>PART NO.</b>	<b>DESCRIPTION</b>
1	584 46 83-02	DECK
2	587 25 33-01	MANDREL ASM
3	584 44 45-02	KEEPER, BELT
4	584 44 44-02	PULLEY, MANDREL
5	584 29 37-01	BELT
6	532 44 50-24	COVER, MANDREL
7	586 58 09-01	LIFT ASM, DECK
9	582 34 27-01	LINK. ASM LIFT ADJUSTABLE
10	532 43 64-56	DEFLECTOR; 30" LRVB
12	532 43 66-47	PIN, HINGE
13	532 43 74-62	SPRING, TORSION
14	587 58 17-02	FRONT DECK LINK
17	819 19 19-12	WASHER
18	532 19 42-09	PIN
19	532 19 65-39	BOLT, SHOULDER
20	532 19 42-08	PIN COTTER 5/16 BOW TIE LOCK
22	584 97 75-03	LINK ASM DECK
23	584 30 93-01	SCREW SEMS HEX HEAD 7/16-20 X 1
25	532 12 47-88	RETAINER SPRING 1"
28	532 40 02-34	NUT FLANGE LOCK TOP
29	532 41 92-73	BLADE
31	532 19 31-97	PULLEY, IDLER
34	872 11 06-12	BOLT, 3/8-16 X 1 1/2
35	532 19 94-77	ARM, BRAKE
36	532 13 77-29	SCREW THD ROLL 1/4-20 X 5/8
37	873 90 06-00	NUT, 3/8-16 FLANGE
40	819 17 16-16	WASHER, 16 GA.
46	532 42 30-62	PALNUT 1/4
48	586 84 36-01	ARM CLUTCHING
49	532 19 90-92	SPACER RETAINER
50	817 00 06-16	SCREW 3/8-16 X 1
52	817 60 04-06	SCREW 1/4-20 X 3/8
53	585 04 91-01	SPRING RETURN DECK
54	532 41 55-98	PORT WAHSOUT
55	532 43 79-88	E-RING 5/16
56	532 40 48-51	ROD ANTI-SWAY
57	819 13 13-12	WASHER 13/32 X 13/16 X 12 GA
59	532 43 68-58	GUARD TUV IDLER
61	532 43 64-55	COVER MULCH 30 INCH
62	532 17 62-05	TRUNION SUSPENSION ARM
63	532 17 59-94	NUT LIFT LINK 7/16-20
65	871 08 10-10	SCREW PAN HEAD 10-24 x 5/8
66	819 06 12-16	WASHER FLAT #10
67	810 07 10-00	LOCKWASHER
68	532 16 07-93	LATCH SUB ASSEMBLY
69	532 12 50-04	WELDNUT 10-24
78	532 14 08-11	RIVET
81	532 14 08-10	WASHER .194 X .625 X .060
84	584 82 33-02	GUARD MANDREL EXTENSION
85	873 35 06-00	NUT HEX JAM 3/8-16 UNC
86	586 97 93-01	RUBBER GUARD
87	584 95 39-01	BOLT, HEX, WAHSER
--	586 34 45-01	ASM KIT BAGGER

**NOTE:** All component dimensions given in U.S. inches  
1 inch = 25.4 mm

