

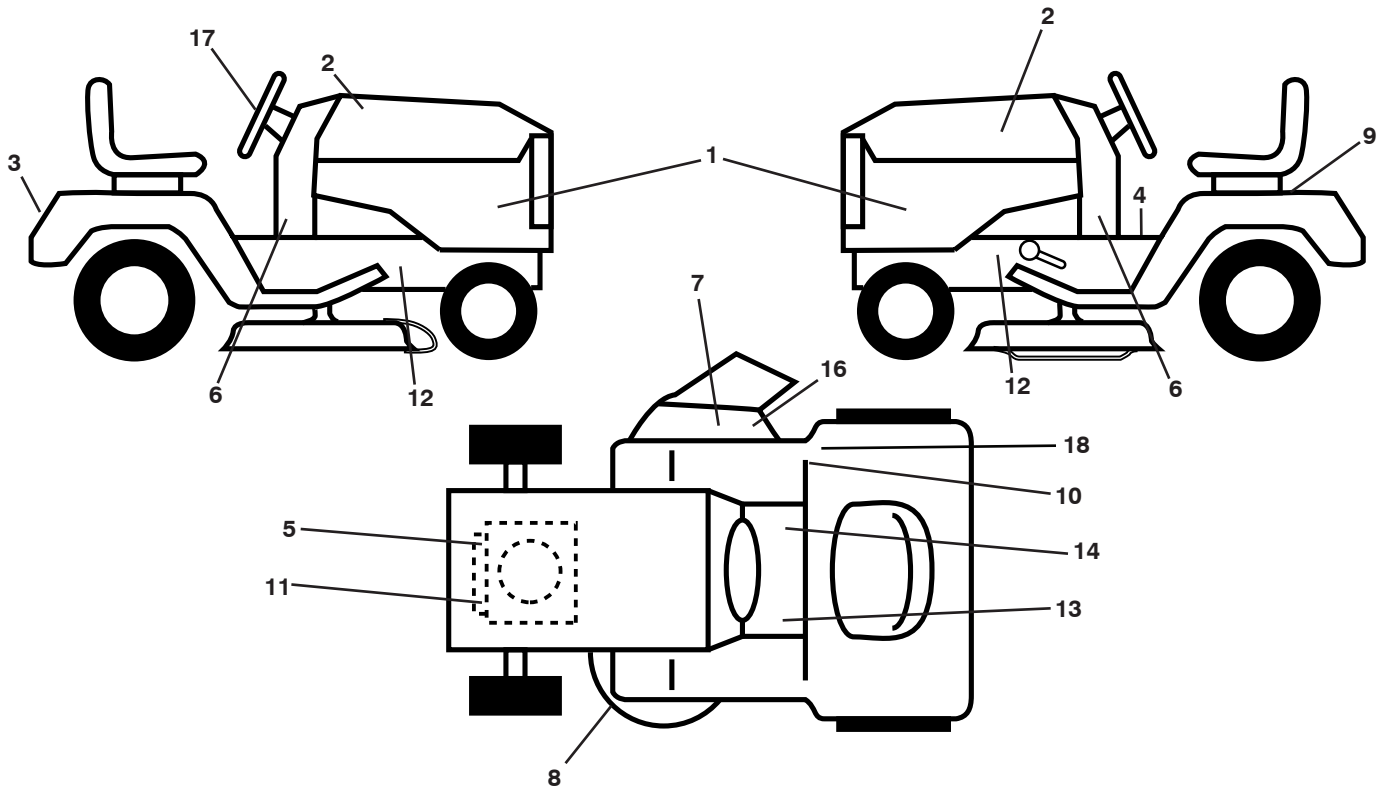
# **ILLUSTRATED PARTS LIST**

**MODEL NO. 96041031400/01**

**CUSTOMER CATALOG NO. M14538H**

**PROD. NO. 960 41 03-14**

**TRACTOR -- MODEL NO. M14538H (96041031400/01), PROD. NO. 960 41 03-14  
DECALS 27**



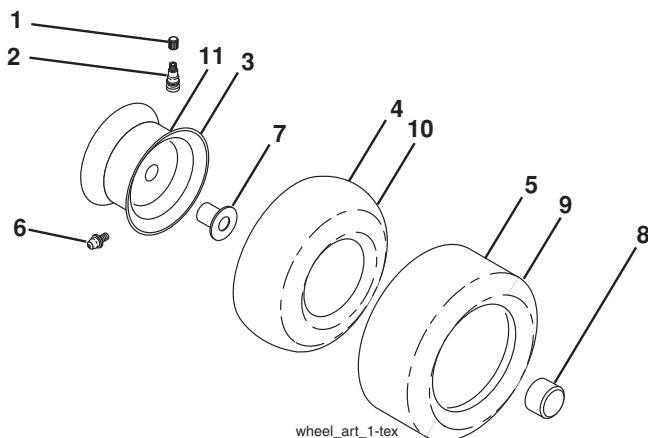
**KEY PART  
NO. NO.**

| KEY PART NO. | NO.          | DESCRIPTION                |
|--------------|--------------|----------------------------|
| 1            | 581 35 26-01 | Decal, Panel SD            |
| 2            | 532 43 83-82 | Decal, Hood RH/LH          |
| 3            | 532 44 44-52 | Decal, Fender              |
| 4            | 581 57 81-01 | Decal, Oper/Wrng.          |
| 5            | 532 44 42-38 | Decal, Engine HP           |
| 6            | 532 18 56-51 | Decal, Chassis Turbo       |
| 7            | 584 90 46-01 | Decal, Deflect. Warning    |
| 8            | 581 58 00-03 | Decal, V-Belt Schematic    |
| 9            | 532 14 50-05 | Decal, Battery Dan./Poi.   |
| 10           | 581 72 41-02 | Decal, 80 DBA              |
| 11           | 581 57 97-01 | Decal, Warning Eng. Syms.  |
| 12           | 581 57 96-01 | Decal, Chassis Hot Muffler |

**KEY PART  
NO. NO.**

| KEY PART NO. | NO.          | DESCRIPTION                        |
|--------------|--------------|------------------------------------|
| 13           | 581 72 40-01 | Decal, Brake/Clutch Sym.           |
| 14           | 581 57 80-01 | Decal, Saddle Brake Parking        |
| 16           | 581 57 92-01 | Decal, Deflect Wrn. Cutfinger Sym. |
| 17           | 532 43 79-66 | Decal, WHL. STR.                   |
| 18           | 581 72 41-03 | Decal, Tick Mark                   |
| --           | 581 72 46-01 | Decal, Chassis                     |
| --           | 581 72 48-01 | Decal, Bypass                      |
| --           | 532 40 95-05 | Pad, Footrest, LH                  |
| --           | 532 40 95-07 | Pad, Footrest, RH                  |
| --           | 581 35 33-28 | Manual, Operator's (English)       |

**WHEELS AND TIRES**



**KEY PART  
NO. NO.**

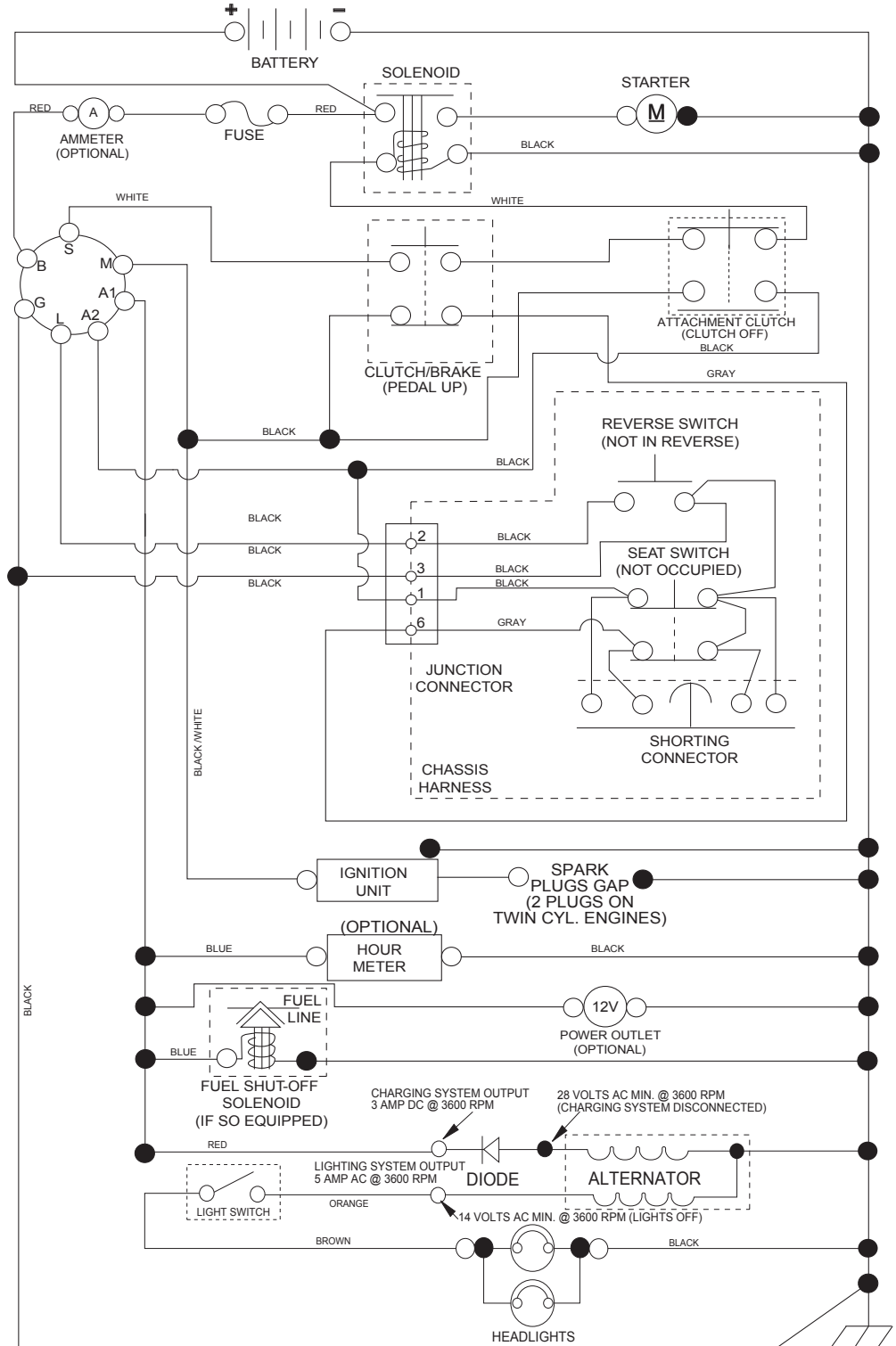
| KEY PART NO. | NO.          | DESCRIPTION                 |
|--------------|--------------|-----------------------------|
| 1            | 532 05 91-92 | Cap, Valve, Tire            |
| 2            | 532 06 51-39 | Stem, Valve                 |
| 3            | 532 12 51-21 | Rim Assembly, Front         |
| 4            | 532 05 99-04 | Tube, Front                 |
| 5            | 532 10 62-22 | Tire, Front                 |
| 6            | 532 12 49-57 | Fitting, Grease             |
| 7            | 532 12 49-59 | Bearing, Flange             |
| 8            | 532 19 32-68 | Cap, Axle                   |
| 9            | 532 12 46-35 | Tire, Rear                  |
| 10           | 532 12 49-26 | Tube, Rear                  |
| 11           | 532 12 51-22 | Rim Assembly, Rear          |
| --           | 532 14 43-34 | Sealant, Tire (10 oz. Tube) |

**NOTE:** All component dimensions given in U.S. inches  
1 inch = 25.4 mm

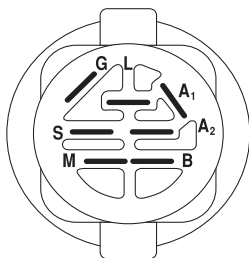
# TRACTOR -- MODEL NO. M14538H (96041031400/01), PROD. NO. 960 41 03-14

## SCHEMATIC 38

SCH11

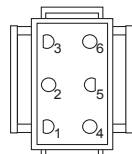


**NOTE**  
 YOUR TRACTOR IS EQUIPPED WITH A SPECIAL ALTERNATOR SYSTEM. THE LIGHTS ARE NOT CONNECTED TO THE BATTERY, BUT HAVE THEIR OWN ELECTRICAL SOURCE. BECAUSE OF THIS, THE BRIGHTNESS OF THE LIGHTS WILL CHANGE WITH ENGINE SPEED. AT IDLE THE LIGHTS WILL DIM. AS THE ENGINE IS SPEEDED UP, THE LIGHTS WILL BECOME THEIR BRIGHTEST.

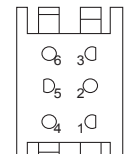


IGNITION SWITCH

| POSITION     | CIRCUIT "MAKE" |
|--------------|----------------|
| OFF          | M+G+A1         |
| RUN/OVERRIDE | B+A1           |
| RUN          | B+A1 L+A2      |
| START        | B + S + A1     |



CHASSIS HARNESS CONNECTOR (MATING SIDE)



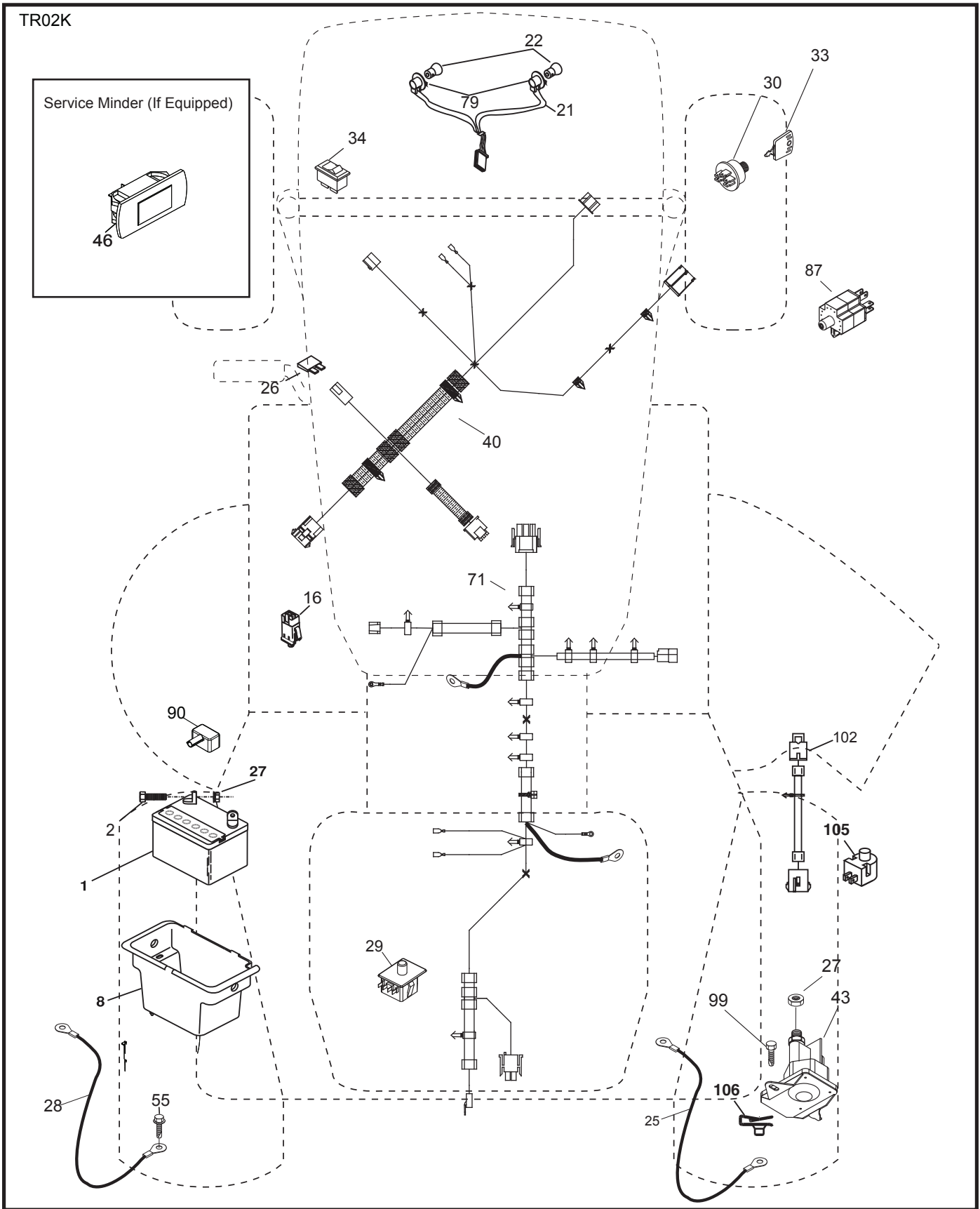
DASH HARNESS CONNECTOR (MATING SIDE)

WIRING INSULATED CLIPS  
 NOTE: IF WIRING INSULATED CLIPS WERE REMOVED FOR SERVICING OF UNIT, THEY SHOULD BE RE-INSTALLED TO PROPERLY SECURE YOUR WIRING.

NON-REMOVABLE CONNECTIONS

REMOVABLE CONNECTIONS

**TRACTOR -- MODEL NO. M14538H (96041031400/01), PROD. NO. 96041 03-14**  
**ELECTRICAL 32**

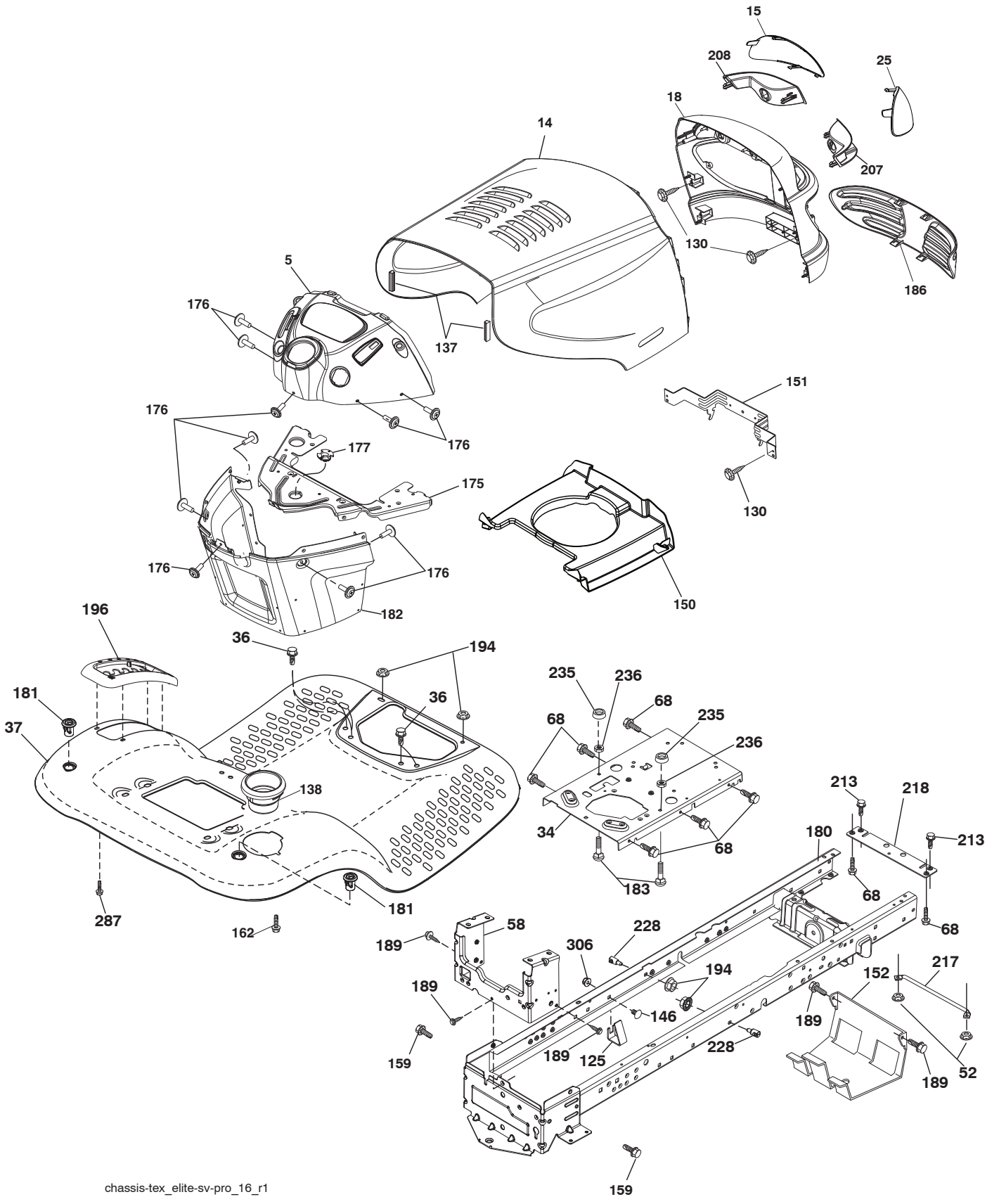


**TRACTOR--MODEL NO. M14538H (96041031400/01), PROD. NO. 960 41 03-14  
ELECTRICAL 32**

| <b>KEY NO.</b> | <b>PART NO.</b> | <b>DESCRIPTION</b>               |
|----------------|-----------------|----------------------------------|
| 1              | 532 16 34-65    | Battery                          |
| 2              | 874 76 04-12    | Bolt Hex Hd. 1/4-20 unc x 3/4    |
| 8              | 532 19 32-28    | Box Battery                      |
| 16             | 532 17 61-38    | Switch Interlock Push-In         |
| 21             | 532 18 37-59    | Harness Socket Light w/4152J     |
| 22             | 532 00 41-52    | Bulb Light                       |
| 25             | 581 49 80-01    | Cable Starter                    |
| 26             | 532 17 51-58    | Fuse                             |
| 27             | 873 51 04-00    | Nut Keps Hex 1/4-20 unc          |
| 28             | 532 42 16-86    | Cable, Ground                    |
| 29             | 532 40 15-45    | Switch, Seat                     |
| 30             | 532 19 33-50    | Switch, Ign.                     |
| 33             | 532 41 19-33    | Key/Chain                        |
| 34             | 532 11 07-12    | Switch Light/Reset               |
| 40             | 581 02 31-01    | Harness Ign. Dash                |
| 43             | 532 19 25-07    | Solenoid                         |
| 55             | 817 06 05-12    | Screw Thdrol. 5/16-18 x 3/4 TYTT |
| 71             | 581 02 30-01    | Harness Ign. Chassis             |
| 79             | 532 17 52-42    | Bulbholder Asm. Incandescent     |
| 87             | 532 19 78-02    | Switch Interlock Clutch          |
| 90             | 532 43 53-95    | Cover Terminal Battery           |
| 99             | 817 67 04-12    | Screw Hexwsh                     |
| 102            | 532 40 44-54    | Harness Pigtail K46 Tex ROS      |
| 105            | 532 40 75-68    | Switch Reverse                   |
| 106            | 532 17 48-14    | Palnut                           |

**NOTE:** All component dimensions given in U.S. inches  
1 inch = 25.4 mm

**TRACTOR -- MODEL NO. M14538H (96041031400/01), PROD. NO. 96041 03-14**  
**CHASSIS AND ENCLOSURES 39**



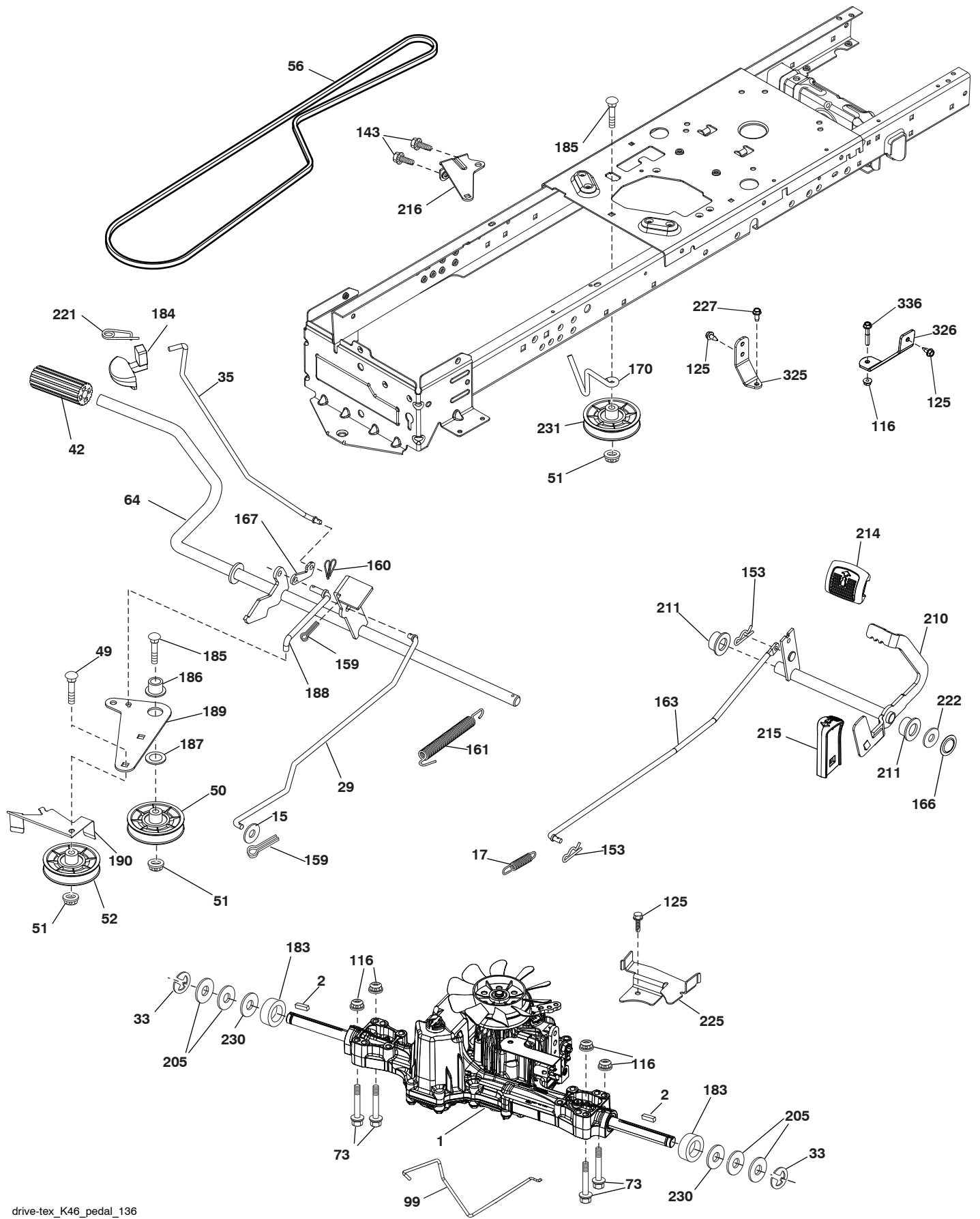
chassis-tex\_elite-sv-pro\_16\_r1

**TRACTOR -- MODEL NO. M14538H (96041031400/01), PROD. NO. 960 41 03-14  
CHASSIS AND ENCLOSURES 39**

| KEY<br>NO. | PART<br>NO.  | DESCRIPTION                         |
|------------|--------------|-------------------------------------|
| 5          | 532 41 17-64 | Dash                                |
| 14         | 532 19 45-88 | Hood                                |
| 15         | 532 18 97-54 | Lens Grille LH                      |
| 18         | 532 18 97-48 | Grille                              |
| 25         | 532 18 97-55 | Lens Grille RH                      |
| 34         | 580 91 08-01 | Plate Engine                        |
| 36         | 817 06 05-12 | Screw 5/16-18 x 3/4                 |
| 37         | 532 42 07-96 | Fender                              |
| 52         | 873 68 05-00 | Nut Crown Lock 5/16-18              |
| 58         | 532 41 22-80 | Drawbar, Upper 2 Pc.                |
| 68         | 817 49 05-08 | Screw Thdrol. 5/16-18 x 1/2         |
| 125        | 581 68 48-01 | Clip Fuel Line                      |
| 130        | 532 41 63-58 | Screw #10 x 0.750                   |
| 137        | 532 18 49-21 | Bumper Hood                         |
| 138        | 532 40 97-30 | Cupholder                           |
| 146        | 581 85 79-01 | Bolt                                |
| 150        | 532 18 43-22 | Duct Intake Elite-SV                |
| 151        | 532 40 78-07 | Bracket Pivot                       |
| 152        | 532 19 95-35 | Shield Browning/Debris              |
| 159        | 817 00 06-12 | Screw Hex Wsh. Thdrol. 3/8-16 x 3/4 |
| 162        | 532 14 24-32 | Screw Hex Wsh. Hi-Lo 1/4 x 1/2      |
| 175        | 532 19 32-43 | Crossmember                         |
| 176        | 532 40 07-76 | Screw 10-24 x 5/8 Wshd. Qdrx.       |
| 177        | 532 19 52-28 | Bushing Steering                    |
| 180        | 532 41 50-63 | Chassis                             |
| 181        | 532 40 47-96 | Bushing Mtg. Fender Crgo.           |
| 182        | 532 19 30-57 | Dash Lower                          |
| 183        | 874 52 05-20 | Bolt 5/16-18 x 1-1/4                |
| 186        | 532 18 97-53 | Insert Grille                       |
| 189        | 817 00 05-12 | Screw 5/16-18 x 3/4                 |
| 194        | 873 90 05-00 | Nut Lock Hex Flange 5/16-18         |
| 196        | 532 41 45-81 | Console Asm. Deck Lift              |
| 207        | 532 18 38-33 | Bezel RH                            |
| 208        | 532 18 38-32 | Bezel LH                            |
| 213        | 874 76 05-12 | Bolt Hex Hd 5/16-18 x 3/4           |
| 217        | 532 40 91-67 | Rod Pivot Chassis                   |
| 218        | 532 19 63-95 | X-Piece Hood Stop                   |
| 228        | 532 19 51-61 | Stud Fastener                       |
| 235        | 532 40 61-29 | Spacer Fender                       |
| 236        | 873 93 05-00 | Nut center Lock 5/16-18             |
| 287        | 817 60 04-06 | Screw 1/4-20 x 3/8                  |
| 306        | 873 90 06-00 | Nut Lock                            |

**NOTE:** All component dimensions given in U.S. inches  
1 inch = 25.4 mm

**TRACTOR -- MODEL NO. M14538H (96041031400/01), PROD. NO. 96041 03-14**  
**DRIVE 40**



drive-tex\_K46\_pedal\_136

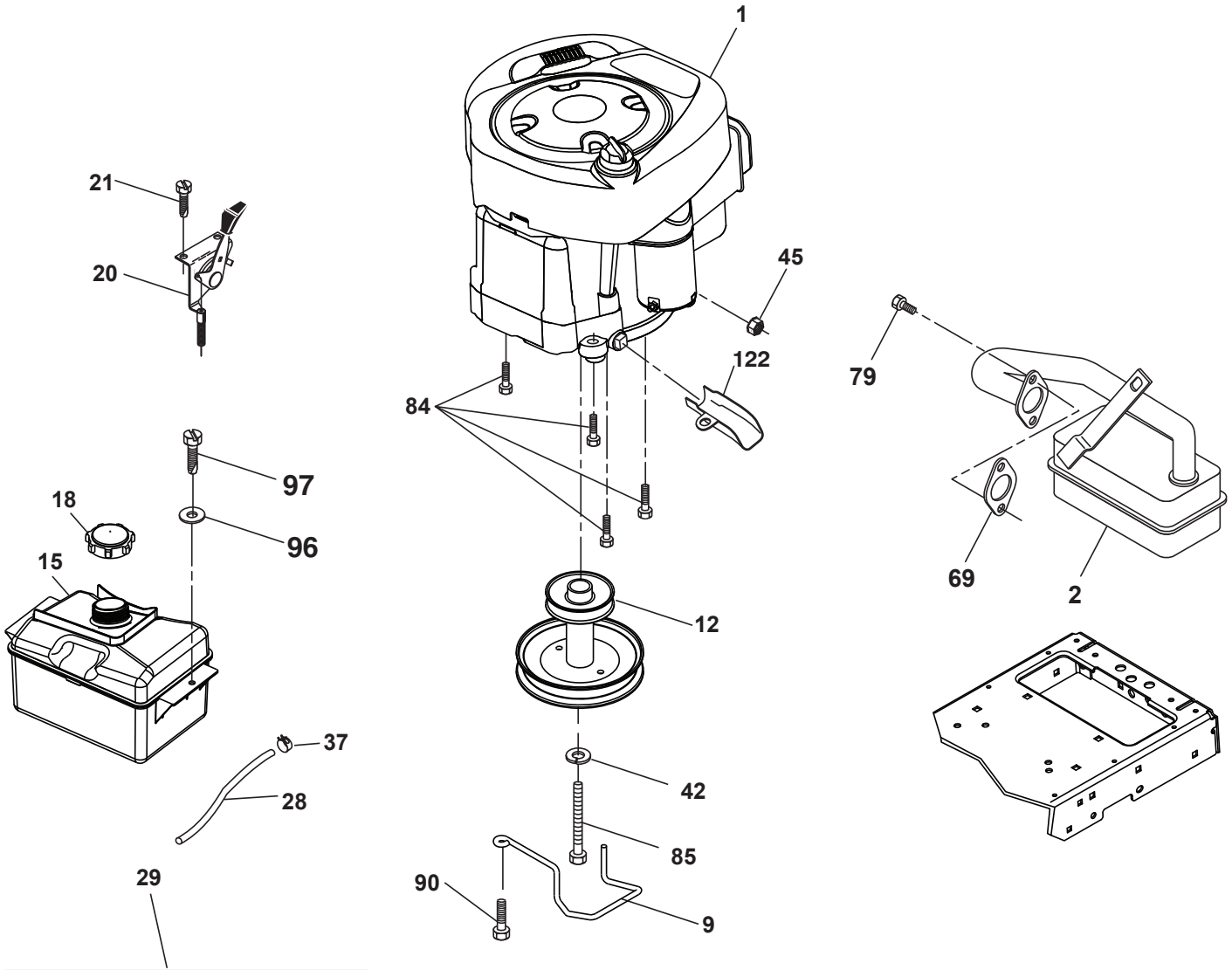


**TRACTOR--MODEL NO. M14538H (96041031400/01), PROD. NO. 960 41 03-14  
DRIVE 40**

| KEY<br>NO. | PART<br>NO.  | DESCRIPTION   | KEY<br>NO. | PART<br>NO.  | DESCRIPTION                   |
|------------|--------------|---|------------|--------------|-------------------------------|
| 1          | -----        | Transaxle, TUFFTORQ K46 BT<br>(426120) (Order parts from<br>transaxle manufacturer) | 170        | 532 41 34-30 | Keeper Belt Centerspan        |
| 2          | 532 12 35-83 | Key   | 183        | 532 13 70-57 | Spacer Split                  |
| 15         | 819 13 13-16 | Washer 13/32 x 13/16 x 16 Ga.   | 184        | 532 44 15-04 | Handle Parking Brake          |
| 17         | 532 41 36-78 | Spring, Brake   | 185        | 872 11 06-22 | Bolt Rdhd Sqnk 3/8-16 x 2-3/4 |
| 29         | 532 40 38-06 | Rod, Brake  | 186        | 532 19 43-21 | Spacer Retainer               |
| 33         | 812 00 00-01 | Ring E  | 187        | 819 13 32-10 | Washer                        |
| 35         | 532 19 77-22 | Rod, Brake, Park  | 188        | 532 19 43-23 | Link Clutch Ground Drive      |
| 42         | 532 12 48-72 | Cover, Foot Pedal   | 189        | 532 19 43-17 | Bellcrank Ground Drive        |
| 49         | 872 11 06-14 | Bolt  | 190        | 532 19 43-18 | Keeper Bellcrank Ground Drive |
| 50         | 532 19 43-27 | Pulley Idler Flat   | 205        | 532 12 17-48 | Washer                        |
| 51         | 873 90 06-00 | Lock Nut 3/8-16   | 210        | 532 40 09-80 | Rocker Assembly Pedal         |
| 52         | 532 19 43-26 | Idler V-Groove  | 211        | 532 12 01-83 | Bearing Nylon                 |
| 56         | 532 13 09-69 | V-Belt, Drive   | 214        | 532 42 12-63 | Pad Pedal Forward             |
| 64         | 532 19 78-65 | Shaft Asm. Pedal Brake Control  | 215        | 532 40 17-23 | Pad Pedal Reverse             |
| 73         | 874 49 05-40 | Bolt Hex Flghd 5/16-18 x 2.1/2 Gr. 5  | 216        | 532 19 61-31 | Bracket Pulley Idler          |
| 99         | 532 41 57-42 | Rod Bypass  | 221        | 532 40 31-87 | Retainer Spring Clip Handle   |
| 116        | 873 90 05-00 | Nut Lock Hex Flange 5/16-18   | 222        | 879 21 20-10 | Washer 21/32 x 1-1/4 10 Ga.   |
| 125        | 817 00 05-12 | Screw 5/16-18 x 3/4   | 225        | 532 40 33-19 | Keeper Belt Trans.            |
| 143        | 817 49 05-08 | Screw Thdrol 5/16-18 x 1/2  | 227        | 817 49 05-12 | Screw Thdrol 5/16-18 x 3/4    |
| 153        | 532 12 47-88 | Retainer Spring   | 230        | 532 18 89-67 | Washer Hardened               |
| 159        | 876 02 04-12 | Pin Cotter 1/8 x 3/4  | 231        | 532 40 72-87 | Idler V-Groove 1.688" Offset  |
| 160        | 532 16 94-84 | Retainer Clip   | 325        | 586 43 12-02 | Torque Strap                  |
| 161        | 532 10 57-09 | Spring, Return, Clutch  | 326        | 586 00 11-02 | Bracket Trq                   |
| 163        | 532 44 82-75 | Rod Control Pedal   | 336        | 587 25 96-01 | Bolt                          |
| 166        | 532 42 91-64 | Nut Push  |            |              |                               |
| 167        | 532 40 52-57 | Latch Brake Parking   |            |              |                               |

**NOTE:** All component dimensions given in U.S. inches  
1 inch = 25.4 mm

TRACTOR -- MODEL NO. M14538H (96041031400/01), PROD. NO. 96041 03-14  
ENGINE 24



**OPTIONAL EQUIPMENT**  
**Spark Arrester**

engine-tex\_BS\_30

**TRACTOR -- MODEL NO. M14538H (96041031400/01), PROD. NO. 960 41 03-14  
ENGINE 24**

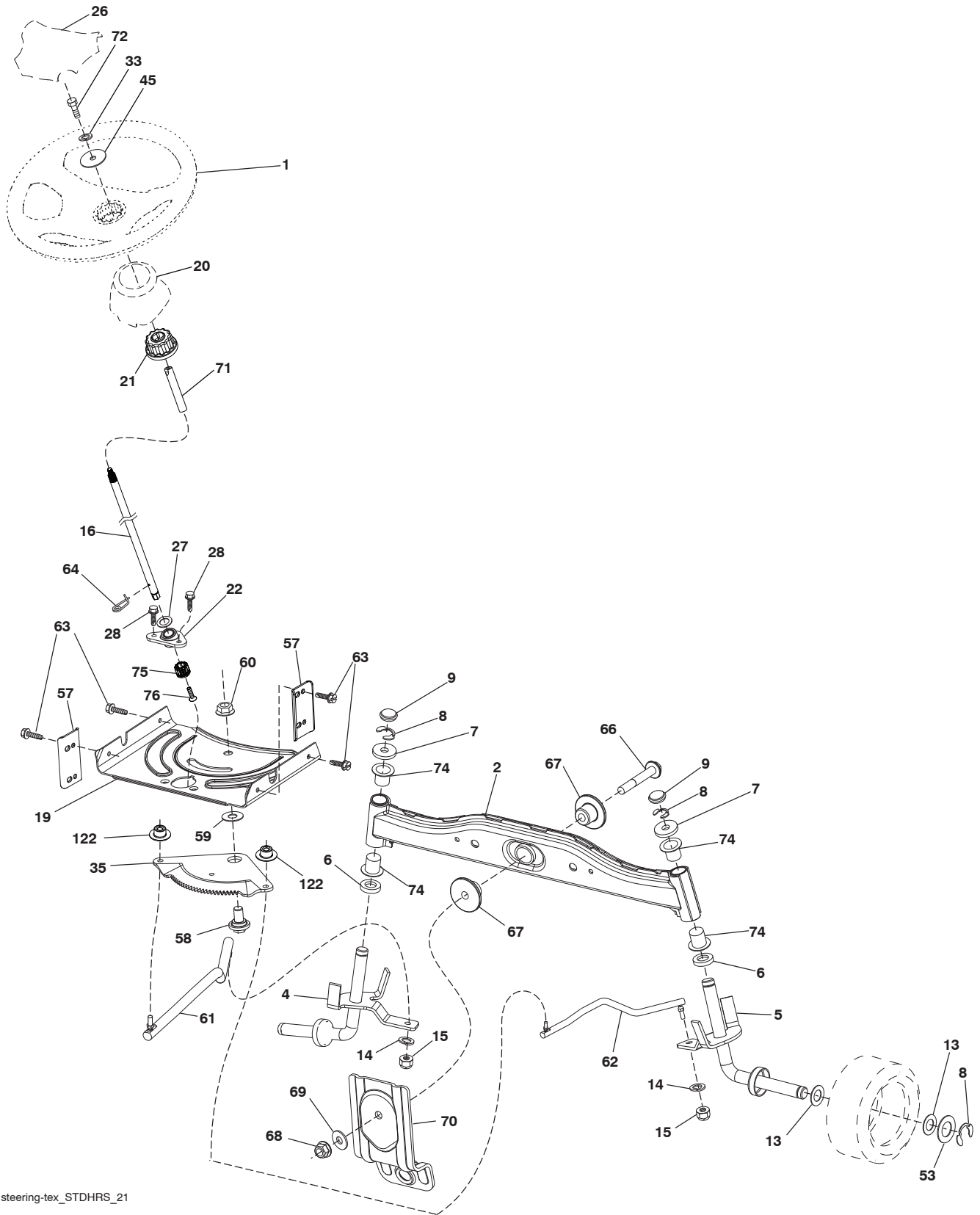
| KEY<br>NO. | PART<br>NO.  | DESCRIPTION   |
|------------|--------------|---|
| 1          | -----        | Engine B&S Model No.<br>31E577-1596-G5 (443664) (Order<br>parts from engine manufacturer) |
| 2          | 532 13 73-52 | Muffler   |
| 9          | 584 90 80-01 | Keeper Belt Engine  |
| 12         | 586 47 85-01 | Pulley Engine   |
| 15         | 581 28 99-01 | Tank Fuel   |
| 18         | 532 43 02-20 | Cap Asm.  |
| 20         | 532 41 17-24 | Control Throttle/Choke  |
| 21         | 532 41 63-58 | Screw 10 x 0.750  |
| 28         | 532 13 70-40 | Fuel Line   |
| 29         | 532 13 71-80 | Spark Arrester Kit  |
| 37         | 532 12 34-87 | Clamp Hose  |
| 42         | 810 04 07-00 | Washer Lock 7/16  |
| 45         | 873 51 04-00 | Nut Keps Hex 1/4-20 unc   |
| 69         | 532 16 52-91 | Gasket  |
| 79         | 532 19 23-34 | Screw Socket Hd. 5/16-18 x .75  |
| 84         | 817 06 06-20 | Screw 3/8-16 x 1-1/4  |
| 85         | 532 17 39-37 | Bolt Hex 7/16-20 x 4 x Gr. 5-1.5  |
| 90         | 817 00 06-16 | Screw 3/8-16 x 1.0  |
| 96         | 819 09 14-16 | Washer 9/32 x 7/8 x 16  |
| 97         | 817 67 04-12 | Screw Hex Wsh. Thdrol. 1/4-20 x 3/4   |
| 122        | 532 42 19-22 | Extension Drain Oil   |

**NOTE:** All component dimensions given in U.S. inches  
1 inch = 25.4 mm

**Engine Power Rating Information**

The gross power rating for individual gas engine models is labeled in accordance with SAE (Society of Automotive Engineers) code J1940 (Small Engine Power & Torque Rating Procedure), and rating performance has been obtained and corrected in accordance with SAE J1995 (Revision 2002-05). Torque values are derived at 3060 RPM; horsepower values are derived at 3600 RPM. Actual gross engine power will be lower and is affected by, among other things, ambient operating conditions and engine-to-engine variability. Given both the wide array of prod.s on which engines are placed and the variety of environmental issues applicable to operating the equipment, the gas engine will not develop the rated gross power when used in a given piece of power equipment (actual "on-site" or net power). This difference is due to a variety of factors including, but not limited to, accessories (air cleaner, exhaust, charging, cooling, carburetor, fuel pump, etc.), application limitations, ambient operating conditions (temperature, humidity, altitude), and engine-to-engine variability. Due to manufacturing and capacity limitations, Briggs & Stratton may substitute an engine of higher rated power for this Series engine.

**TRACTOR -- MODEL NO. M14538H (96041031400/01), PROD. NO. 96041 03-14**  
**STEERING ASSEMBLY 41**



steering-tex\_STDHRS\_21

**TRACTOR -- MODEL NO. M14538H (96041031400/01), PROD. NO. 960 41 03-14**  
**STEERING ASSEMBLY 41**

| <b>KEY NO.</b> | <b>PART NO.</b> | <b>DESCRIPTION</b>                  |
|----------------|-----------------|-------------------------------------|
| 1              | 532 42 45-51    | Wheel, Steering                     |
| 2              | 532 41 81-68    | Axle Asm., Front                    |
| 4              | 532 40 30-87    | Spindle Asm., LH                    |
| 5              | 532 40 30-88    | Spindle Asm., RH                    |
| 6              | 532 12 49-31    | Bearing, Race Thrust Harden         |
| 7              | 532 12 17-48    | Washer 25/32 x 1-5/8 x 16 Ga.       |
| 8              | 812 00 00-29    | Ring, Clip #T5304-75                |
| 9              | 532 12 12-32    | Cap, Spindle                        |
| 13             | 532 12 17-49    | Washer 25/32 x 1-1/4 x 16 Ga.       |
| 14             | 810 04 06-00    | Washer, Lock Hvy. Hlcl. Spr. 3/8    |
| 15             | 873 54 06-00    | Nut, Crown Lock 3/8-24 unf          |
| 16             | 585 86 92-02    | Steering Shaft                      |
| 19             | 532 19 47-29    | Plate Steering                      |
| 20             | 532 41 12-91    | Boot, Steering                      |
| 21             | 532 18 67-37    | Adapter, Wheel Steering             |
| 22             | 585 02 98-02    | Bearing                             |
| 26             | 532 44 15-06    | Insert, Wheel Steering              |
| 27             | 819 21 16-16    | Washer                              |
| 28             | 817 00 06-12    | Screw 3/8-16 x 3/4                  |
| 33             | 810 04 05-00    | Washer Lock 5/16                    |
| 35             | 532 19 47-32    | Gear, Sector Plate                  |
| 45             | 819 11 38-12    | Washer 11/32 x 2-3/8 x 12 Ga.       |
| 53             | 532 18 89-67    | Washer Hardened .793 x 1.637 x .060 |
| 57             | 532 40 74-65    | Bracket Upstop                      |
| 58             | 532 19 47-47    | Bolt Shoulder Sector Pivot CFM      |
| 59             | 532 19 47-48    | Washer Thrust Sector Steering       |
| 60             | 873 97 10-00    | Nut Flange Lock 5/8-11              |
| 61             | 532 19 47-40    | Draglink LH                         |
| 62             | 532 19 47-41    | Draglink, RH                        |
| 63             | 817 00 05-12    | Screw 5/16-18 x 3/4                 |
| 64             | 532 19 98-49    | Retainer Clip Spring Steering       |
| 66             | 871 02 07-48    | Bolt Hex Fghd. 7/16-14 x 3 Serr.    |
| 67             | 532 19 47-37    | Bushing PM Front Axle               |
| 68             | 873 90 07-00    | Nut Lock Flange 7/16-14 Gr. 5       |
| 69             | 532 19 91-62    | Washer 1.5 x .505 x .118            |
| 70             | 532 19 61-97    | Bracket Deck Susp. Front            |
| 71             | 532 19 07-52    | Shaft Ext. Steering                 |
| 72             | 532 42 89-82    | Bolt Fin Hx 5/16-18 x 4             |
| 74             | 532 12 49-37    | Bearing                             |
| 75             | 580 68 37-01    | Pinion                              |
| 76             | 580 68 36-01    | Screw Head Sock                     |
| 122            | 532 44 49-62    | Cap Gear Sector                     |

**NOTE:** All component dimensions given in U.S. inches  
1 inch = 25.4 mm

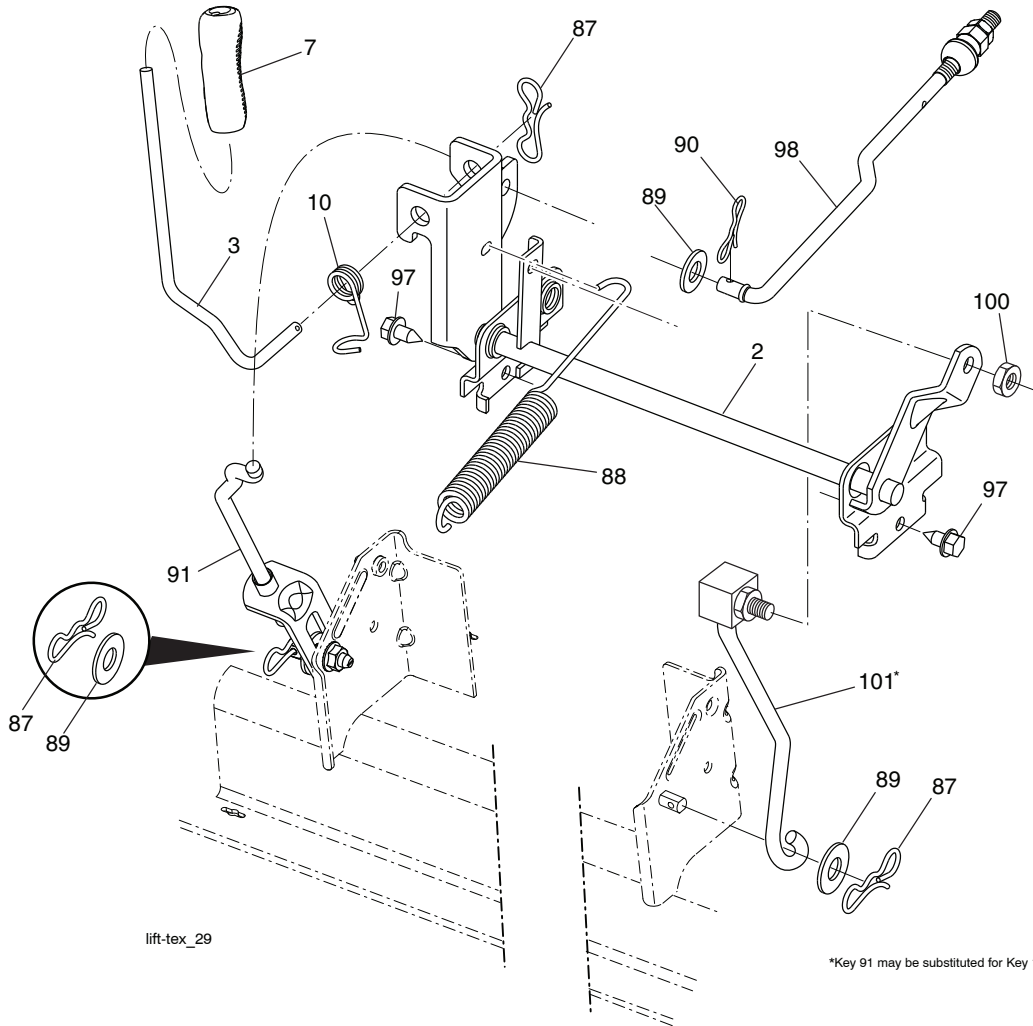


**TRACTOR -- MODEL NO. M14538H (96041031400/01), PROD. NO. 960 41 03-14  
MOWER DECK 44**

| KEY<br>NO. | PART<br>NO.  | DESCRIPTION                         | KEY<br>NO. | PART<br>NO.  | DESCRIPTION   |
|------------|--------------|-------------------------------------|------------|--------------|---|
| 1          | 532 19 42-51 | Mower Housing                       | 59         | 532 14 10-43 | Guard, Tuv. Idler   |
| 6          | 532 19 51-86 | Arm Suspension                      | 60         | 532 19 94-71 | Arm Brake Mower   |
| 7          | 532 41 63-58 | Screw #10 x BOS Thread              | 63         | 532 19 94-70 | Arm Brake Mower   |
| 11         | 532 19 39-57 | Blade 38" 3NI Premium               | 64         | 532 19 97-90 | Link Brake  |
| 12         | 584 30 93-01 | Screw 7/16-20 x 1 Hx                | 67         | 532 40 97-92 | Handle Clutch Cable   |
| 13         | 587 25 65-01 | Shaft Assembly, Mandrel             | 68         | 532 40 83-81 | V-Belt  |
| 14         | 532 18 72-81 | Housing, Mandrel                    | 69         | 872 14 05-05 | Bolt  |
| 15         | 585 32 39-01 | Bearing, Mandrel                    | 70         | 532 19 83-32 | Clutch Asm. Manual  |
| 19         | 532 19 65-39 | Bolt, Shoulder                      | 122        | 532 19 72-58 | Keeper Belt Engine LH   |
| 21         | 873 68 05-00 | Nut, Crownlock 5/16-18 unc          | 123        | 532 19 72-59 | Keeper Belt Engine RH   |
| 23         | 532 19 25-57 | Bracket, Deflector                  | 144        | 532 19 34-14 | Keeper Belt   |
| 24         | 532 10 53-04 | Cap, Sleeve                         | 145        | 532 19 31-97 | Pulley, Idler, Flat   |
| 25         | 532 19 70-26 | Spring, Torsion, Deflector          | 147        | 532 40 18-72 | Spring Return   |
| 26         | 532 11 04-52 | Nut, Push                           | 152        | 532 43 51-11 | Manual Clutch Cable   |
| 27         | 532 19 39-68 | Shield, Deflector                   | 188        | 532 19 51-61 | Stud Fastener   |
| 29         | 532 13 14-91 | Rod, Hinge                          | 189        | 873 90 05-00 | Nut Lock Hex Flange   |
| 32         | 532 19 97-89 | Pulley, Mandrel                     | 195        | 817 00 06-12 | Screw 3/8-16 x 3/4  |
| 33         | 532 40 02-34 | Nut, Toplock, Flanged               | 199        | 532 40 00-95 | Baffle Vortex   |
| 34         | 872 11 06-12 | Bolt Carr. Sh. 3/8-16 x 1-1/2 Gr. 5 | 209        | 819 13 32-10 | Washer 13/32 x 2 x 10   |
| 37         | 819 13 13-16 | Washer                              | 241        | 532 15 29-27 | Screw #10-32.5 3/8  |
| 38         | 532 19 95-41 | Keeper Belt LH Mandrel              | 242        | 532 41 55-98 | Port Washout  |
| 40         | 873 90 06-00 | Nut, Lock Flg. 3/8-16 unc           | --         | 587 25 33-01 | Mandrel Assembly (Includes hous-<br>ing, shaft and shaft hardware only-<br>pulley not included) |
| 41         | 584 95 39-01 | Bolt Hex Wshr                       | --         | 532 43 54-93 | Replacement Mower, Complete   |
| 42         | 532 19 84-10 | Spring Torsion Brake                |            |              |   |
| 43         | 532 19 72-56 | Spring Torsion Retainer             |            |              |   |
| 46         | 532 13 77-29 | Screw 1/4-20 x 5/8                  |            |              |   |
| 55         | 532 19 72-49 | Arm, Idler                          |            |              |   |
| 56         | 532 19 90-92 | Spacer, Retainer                    |            |              |   |
| 57         | 817 00 06-16 | Screw 3/8-16 x 1                    |            |              |   |

**NOTE:** All component dimensions given in U.S. inches  
1 inch = 25.4 mm

**TRACTOR -- MODEL NO. M14538H (96041031400/01), PROD. NO. 96041 03-14**  
**MOWER LIFT 45**



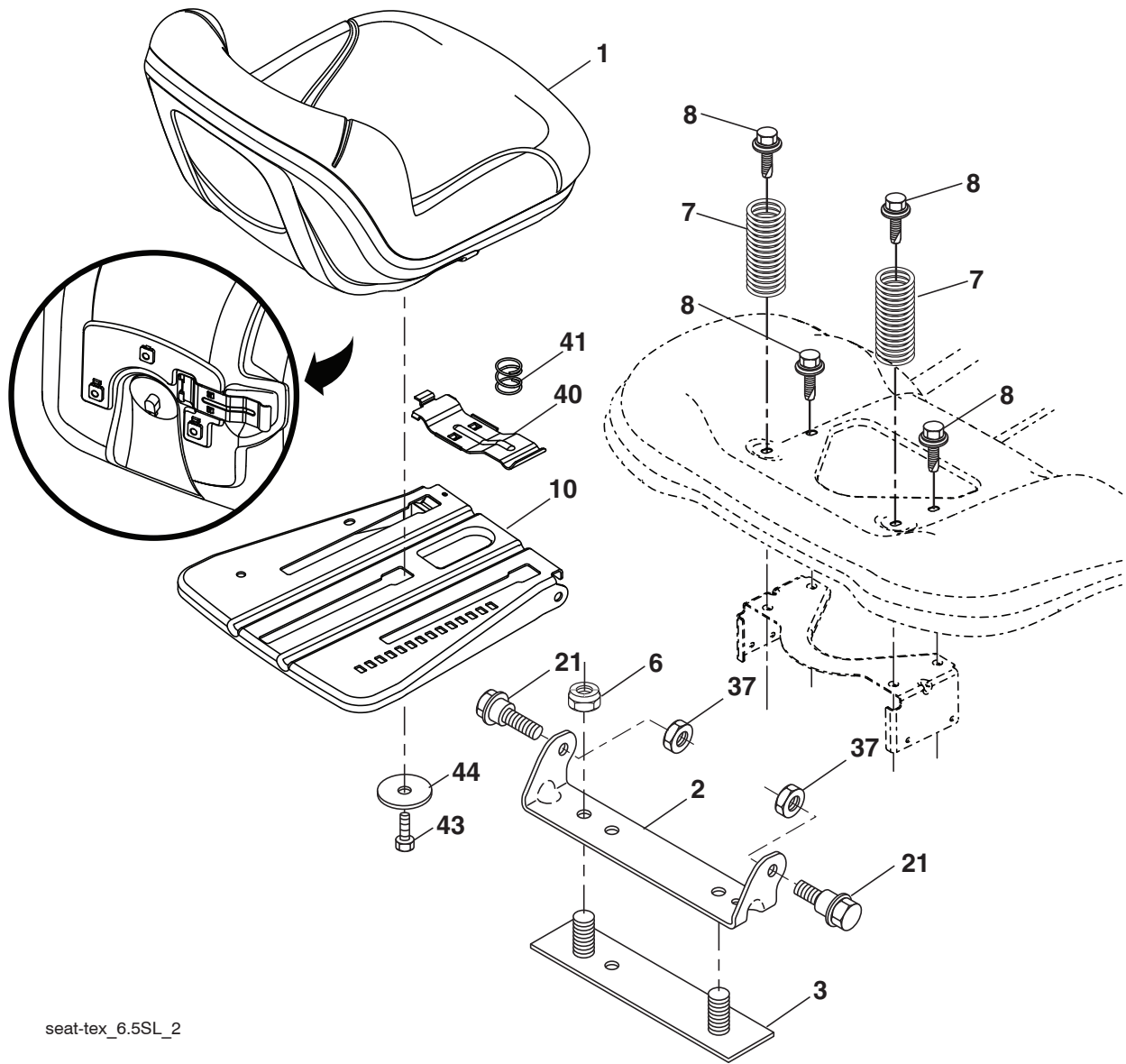
| KEY NO. | PART NO.     | DESCRIPTION                  |
|---------|--------------|------------------------------|
| 2       | 532 42 20-27 | Shaft Asm., Lift             |
| 3       | 532 19 52-31 | Lever Asm., Lift RH          |
| 7       | 581 23 84-01 | Grip, Lever                  |
| 10      | 532 19 63-14 | Spring Torsion               |
| 87      | 532 19 42-09 | Pin Cotter 7/16 Bow Tie Lock |
| 88      | 532 41 07-10 | Spring Lift Assist           |
| 89      | 819 19 19-12 | Washer Clear Zinc            |
| 90      | 532 19 42-08 | Pin Cotter 5/16 Bow Tie Lock |

| KEY NO. | PART NO.     | DESCRIPTION                 |
|---------|--------------|-----------------------------|
| 91      | 532 19 51-81 | Link Lift Susp. Mower Rear  |
| 97      | 817 00 06-12 | Screw 3/8-16 x 3/4          |
| 98      | 532 19 52-70 | Link Lift Susp. Front Mower |
| 100     | 873 93 06-00 | Nut Centerlock 3/8-16 unc   |
| 101     | 532 40 70-03 | Link Asm. Lift              |

**NOTE:** All component dimensions given in U.S. inches  
 1 inch = 25.4 mm



**TRACTOR -- MODEL NO. M14538H (96041031400/01), PROD. NO. 960 41 03-14  
SEAT ASSEMBLY 42**



seat-tex\_6.5SL\_2

| KEY NO. | PART NO.     | DESCRIPTION                   |
|---------|--------------|-------------------------------|
| 1       | 532 41 14-05 | Seat                          |
| 2       | 532 18 01-66 | Bracket Pivot Fender          |
| 3       | 532 14 06-75 | Strap, Asm Fender             |
| 6       | 873 80 06-00 | Nut, Lock w/Ins. 3/8-16 unc   |
| 7       | 532 12 41-81 | Spring, Seat Cprsn            |
| 8       | 532 17 18-77 | Bolt 5/16-18 unc x 3/4 w/Sems |
| 10      | 532 19 69-77 | Pan, Seat                     |
| 21      | 532 17 18-52 | Bolt, Shoulder 5/16-18        |

| KEY NO. | PART NO.     | DESCRIPTION           |
|---------|--------------|-----------------------|
| 37      | 873 80 05-00 | Nut, Lock 5/16-18 unc |
| 40      | 532 19 76-61 | Handle                |
| 41      | 532 19 82-00 | Spring Latch          |
| 43      | 874 76 06-12 | Bolt 3/8-16           |
| 44      | 819 13 38-12 | Washer 13/32 x 2 3/8  |

**NOTE:** All component dimensions given in U.S. inches  
1 inch = 25.4 mm

