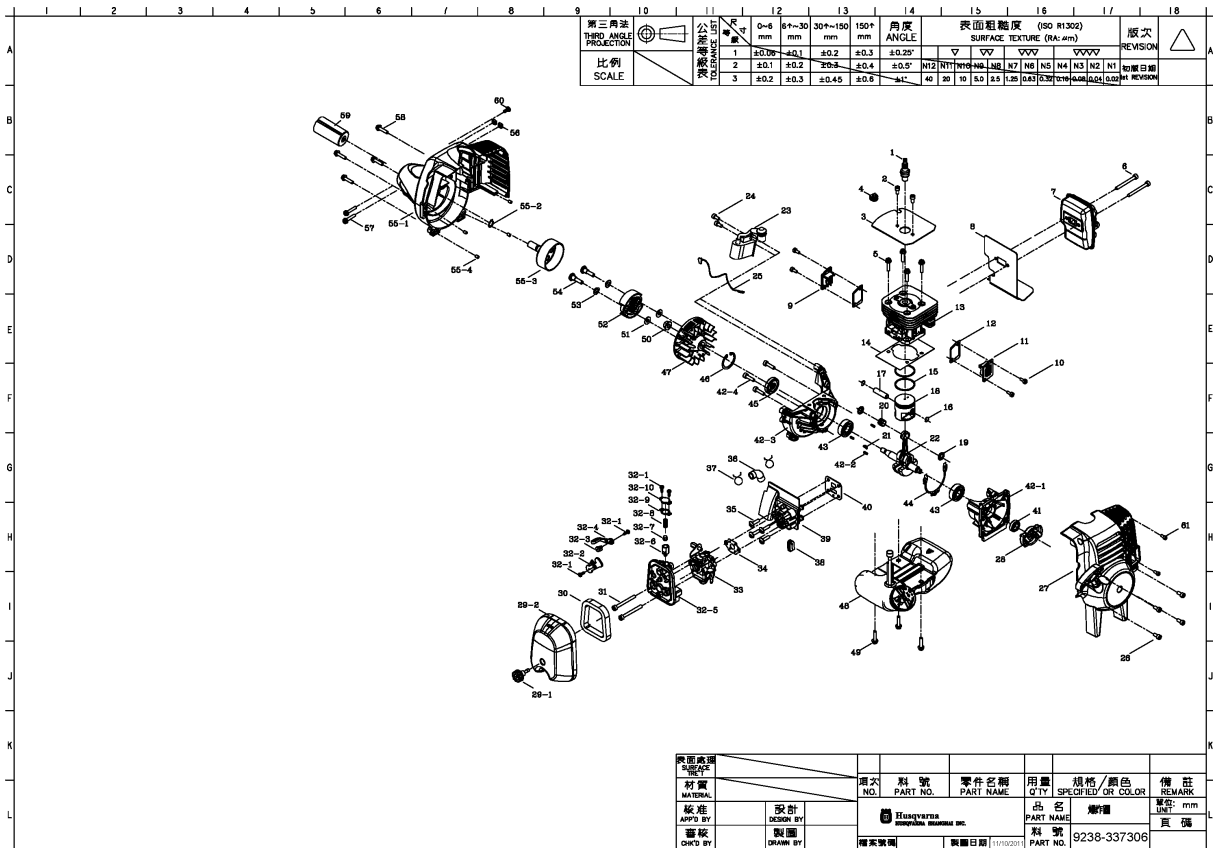




SPARE PARTS LIST

BRUSHCUTTERS/CLEARING SAWS

MB 305 CBS, 966677001, 2013-09



第三角法 THIRD ANGLE PROJECTION	公制單位 METRIC UNIT	0~6 mm	6~30 mm	30~150 mm	150+ mm	角度 ANGLE	表面粗糙度 (ISO R1302) SURFACE TEXTURE (RA:µm)					圖次 REVISION
比例 SCALE	1	±0.08	±0.1	±0.2	±0.3	±0.25°	▽	▽7	▽7.5	▽8	▽8.5	▽9
	2	±0.1	±0.2	±0.3	±0.4	±0.5°	N12	N10	N8	N7	N6	N5
	3	±0.2	±0.3	±0.45	±0.6	±1°	40	30	10	5.0	4.5	4.0
							0.03	0.04	0.05	0.06	0.08	0.1

表面處理 SURFACE TREATMENT	圖次 NO.	料號 PART NO.	零件名稱 PART NAME	用量 QTY	規格/顏色 SPECIFIED OR COLOR	備註 REMARK
材質 MATERIAL	設計 DESIGN BY	HONGYUAN HONGYUAN CO., LTD.		品名 PART NAME	備註 REMARK	單位 UNIT
版次 REV. BY	製圖 DRAWN BY	標準號碼	製圖日期	料號 PART NO.	9238-337306	頁碼

PRODUCT COMPLETE

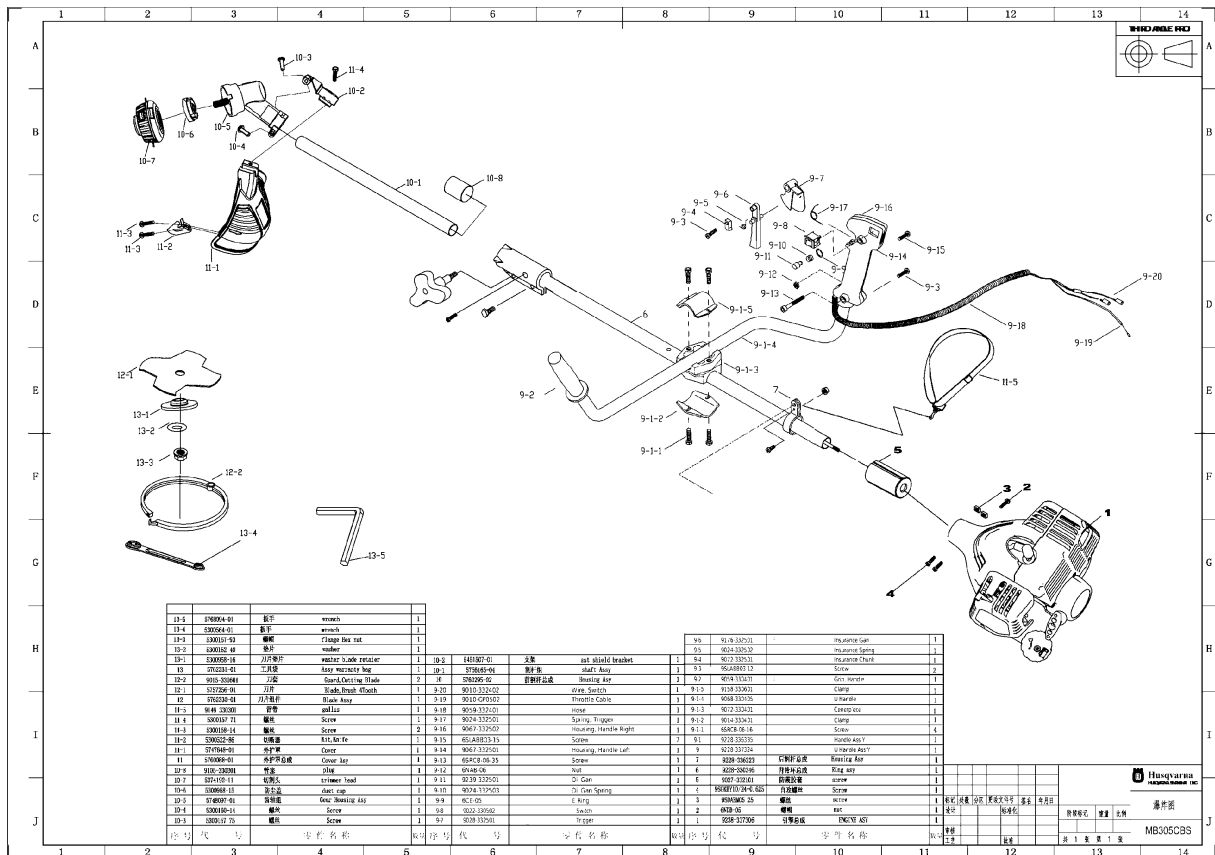
MB 305 CBS, 966677001, 2013-09

Ref	Part no.	Description	Remark	Qty	Kit
1	578 41 02-01	SPARK PLUG		1	
2	575 30 66-01	SCREW		2	
3	575 30 67-01	PLATE		1	
4	575 30 68-01	GROMMET		1	
5	575 30 69-01	SCREW		4	
6	575 30 70-01	SCREW		2	
7	576 53 71-01	MUFFLER ASSY		1	
8	575 30 72-01	SHEET		1	
9	576 53 74-01	COVER		1	
10	574 22 13-01	SCREW		4	
11	576 53 75-01	COVER		1	
12	576 53 76-01	GASKET		2	
13	576 81 87-01	CYLINDER		1	
14	575 30 78-01	GASKET		1	
15	576 53 79-01	PISTON RING		2	
16	575 30 81-01	CIRCLIP		2	
17	576 53 80-01	PISTON PIN		1	
18	576 53 81-01	PISTON		1	
19	575 30 82-01	STUB SHAFT		2	
20	575 30 84-01	NEEDLE BEARING		1	
21	574 72 79-01	KEY		1	
22	575 30 86-01	CRANKSHAFT ASSY		1	
23	578 30 35-01	IGNITION COIL		1	
24	574 72 48-01	SCREW		2	
25	575 31 34-01	CABLE		1	
26	575 30 89-01	SCREW		4	
27	578 41 29-01	STARTER HOUSING		1	
28	575 31 16-01	DRIVER ASSY		1	
29	578 41 03-01	FILTER COVER ASSY		1	
29 1	575 30 93-01	TURNING KNOB		1	
29 2	578 41 04-01	FILTER COVER		1	
30	575 30 95-01	AIR FILTER		1	
31	578 30 39-01	SCREW		2	
32	575 30 97-01	FILTER HOLDER ASSY		1	
32 1	575 30 98-01	SCREW		4	
32 2	575 30 99-01	CHOKE VALVE		1	
32 3	575 31 00-01	ARM		1	
32 4	575 31 01-01	CHOKE CONTROL		1	
32 5	575 31 02-01	FILTER HOLDER		1	
32 6	575 31 03-01	SHAFT		1	
32 7	575 31 04-01	SPRING RETAINER		1	
32 8	575 31 05-01	SPRING		1	
32 9	575 31 06-01	GASKET		1	
32 10	575 31 07-01	LID		1	
33	578 38 89-01	CARBURETTOR		1	
34	575 31 09-01	GASKET		1	
35	575 31 10-01	SCREW		4	
36	575 31 11-01	INLET PIPE		1	
37	575 31 12-01	HOSE CLAMP		2	
38	575 31 13-01	GROMMET		1	
39	575 31 14-01	INSULATOR		1	
40	575 31 15-01	SEALING		1	
41	574 22 21-01	SEAL		1	
42	575 31 17-01	CRANKCASE ASSY		1	
42 1	578 30 40-01	CRANKCASE		1	
42 2	574 72 64-01	PIN		3	
42 3	579 30 40-02	CRANKCASE		1	
42 4	578 30 39-02	SCREW			
43	574 72 66-01	BEARING		2	
44	575 31 19-01	GASKET		1	
45	575 31 21-01	SEALING		1	
46	575 31 20-01	CIRCLIP		1	
47	575 31 22-01	FLYWHEEL ASSY		1	
48	575 31 23-01	FUEL TANK ASSY		1	

PRODUCT COMPLETE

MB 305 CBS, 966677001, 2013-09

Ref	Part no.	Description	Remark	Qty	Kit
49	575 31 33-01	SCREW		3	
50	574 22 34-01	NUT		1	
51	575 31 35-01	WASHER		2	
52	575 31 36-01	CLUTCH ASSY		1	
53	575 31 37-01	SPRING WASHER		2	
54	575 31 38-01	BOLT		2	
55	578 41 28-01	ENGINE COVER		1	
55 1	578 41 18-02	ENGINE COVER		1	
55 2	575 31 41-01	SNAP RING		1	
55 3	575 31 43-01	CLUTCH DRUM		1	
55 4	575 31 42-01	BUSHING		4	
56	575 30 40-01	NUT		2	
57	574 31 68-01	SCREW		2	
58	578 30 39-03	SCREW		4	
59	575 30 41-01	COVER		1	
60	574 31 70-01	SCREW		1	
61	574 31 76-01	SCREW		2	



11-3	270054-01	螺母	wrench	1
11-4	330264-01	螺母	wrench	1
11-5	330010-01	螺栓	Flange Hex Nut	1
11-2	330012-01	螺母	washer	1
11-1	EX0068-04	刀架零件	washer blade retainer	1
10-3	270223-01	刀片架	Blade Wrench Set	1
10-2	9010-300004	刀片架	Guard/Guard Blade	2
10-1	5157206-01	刀片	Blade Sharp Edge	1
10-4	270223-01	刀片架	Blade Wrench Set	1
10-5	9048-20070	刀片架	blade	1
10-6	SK0010-01	螺栓	Screw	1
10-7	330018-04	螺栓	Screw	2
10-8	EX0022-06	刀片架零件	Kit, Kit Fe	1
10-9	370106-01	刀片架	Cover	1
10-10	330036-01	刀片架零件	Cover Set	1
10-11	9105-330001	刀片架	blade	1
10-12	270108-01	刀片架	trimmer head	1
10-13	330044-01	刀片架	blade edge	1
10-14	370007-01	刀片架	Gen. Shaving Kit	1
10-15	330010-01	螺栓	Screw	1
10-16	330017-01	螺栓	Screw	1

9-5	9110-100701	火花塞	spark plug	1
9-4	9110-100702	火花塞	spark plug	1
9-3	9110-100703	火花塞	spark plug	1
9-2	9110-100704	火花塞	spark plug	1
9-1	9110-100705	火花塞	spark plug	1
8	9110-100706	火花塞	spark plug	1
7	9110-100707	火花塞	spark plug	1
6	9110-100708	火花塞	spark plug	1
5	9110-100709	火花塞	spark plug	1
4	9110-100710	火花塞	spark plug	1
3	9110-100711	火花塞	spark plug	1
2	9110-100712	火花塞	spark plug	1
1	9110-100713	火花塞	spark plug	1

95	9110-100714	火花塞	spark plug	1
94	9110-100715	火花塞	spark plug	1
93	9110-100716	火花塞	spark plug	1
92	9110-100717	火花塞	spark plug	1
91	9110-100718	火花塞	spark plug	1
90	9110-100719	火花塞	spark plug	1
89	9110-100720	火花塞	spark plug	1
88	9110-100721	火花塞	spark plug	1
87	9110-100722	火花塞	spark plug	1
86	9110-100723	火花塞	spark plug	1
85	9110-100724	火花塞	spark plug	1
84	9110-100725	火花塞	spark plug	1
83	9110-100726	火花塞	spark plug	1
82	9110-100727	火花塞	spark plug	1
81	9110-100728	火花塞	spark plug	1
80	9110-100729	火花塞	spark plug	1
79	9110-100730	火花塞	spark plug	1
78	9110-100731	火花塞	spark plug	1
77	9110-100732	火花塞	spark plug	1
76	9110-100733	火花塞	spark plug	1
75	9110-100734	火花塞	spark plug	1
74	9110-100735	火花塞	spark plug	1
73	9110-100736	火花塞	spark plug	1
72	9110-100737	火花塞	spark plug	1
71	9110-100738	火花塞	spark plug	1
70	9110-100739	火花塞	spark plug	1
69	9110-100740	火花塞	spark plug	1
68	9110-100741	火花塞	spark plug	1
67	9110-100742	火花塞	spark plug	1
66	9110-100743	火花塞	spark plug	1
65	9110-100744	火花塞	spark plug	1
64	9110-100745	火花塞	spark plug	1
63	9110-100746	火花塞	spark plug	1
62	9110-100747	火花塞	spark plug	1
61	9110-100748	火花塞	spark plug	1
60	9110-100749	火花塞	spark plug	1
59	9110-100750	火花塞	spark plug	1
58	9110-100751	火花塞	spark plug	1
57	9110-100752	火花塞	spark plug	1
56	9110-100753	火花塞	spark plug	1
55	9110-100754	火花塞	spark plug	1
54	9110-100755	火花塞	spark plug	1
53	9110-100756	火花塞	spark plug	1
52	9110-100757	火花塞	spark plug	1
51	9110-100758	火花塞	spark plug	1
50	9110-100759	火花塞	spark plug	1
49	9110-100760	火花塞	spark plug	1
48	9110-100761	火花塞	spark plug	1
47	9110-100762	火花塞	spark plug	1
46	9110-100763	火花塞	spark plug	1
45	9110-100764	火花塞	spark plug	1
44	9110-100765	火花塞	spark plug	1
43	9110-100766	火花塞	spark plug	1
42	9110-100767	火花塞	spark plug	1
41	9110-100768	火花塞	spark plug	1
40	9110-100769	火花塞	spark plug	1
39	9110-100770	火花塞	spark plug	1
38	9110-100771	火花塞	spark plug	1
37	9110-100772	火花塞	spark plug	1
36	9110-100773	火花塞	spark plug	1
35	9110-100774	火花塞	spark plug	1
34	9110-100775	火花塞	spark plug	1
33	9110-100776	火花塞	spark plug	1
32	9110-100777	火花塞	spark plug	1
31	9110-100778	火花塞	spark plug	1
30	9110-100779	火花塞	spark plug	1
29	9110-100780	火花塞	spark plug	1
28	9110-100781	火花塞	spark plug	1
27	9110-100782	火花塞	spark plug	1
26	9110-100783	火花塞	spark plug	1
25	9110-100784	火花塞	spark plug	1
24	9110-100785	火花塞	spark plug	1
23	9110-100786	火花塞	spark plug	1
22	9110-100787	火花塞	spark plug	1
21	9110-100788	火花塞	spark plug	1
20	9110-100789	火花塞	spark plug	1
19	9110-100790	火花塞	spark plug	1
18	9110-100791	火花塞	spark plug	1
17	9110-100792	火花塞	spark plug	1
16	9110-100793	火花塞	spark plug	1
15	9110-100794	火花塞	spark plug	1
14	9110-100795	火花塞	spark plug	1
13	9110-100796	火花塞	spark plug	1
12	9110-100797	火花塞	spark plug	1
11	9110-100798	火花塞	spark plug	1
10	9110-100799	火花塞	spark plug	1
9	9110-100800	火花塞	spark plug	1
8	9110-100801	火花塞	spark plug	1
7	9110-100802	火花塞	spark plug	1
6	9110-100803	火花塞	spark plug	1
5	9110-100804	火花塞	spark plug	1
4	9110-100805	火花塞	spark plug	1
3	9110-100806	火花塞	spark plug	1
2	9110-100807	火花塞	spark plug	1
1	9110-100808	火花塞	spark plug	1



零件图 MB305CBS

PRODUCT COMPLETE

MB 305 CBS, 966677001, 2013-09

Ref	Part no.	Description	Remark	Qty	Kit
1	.	TBD		1	
2	575 30 40-01	NUT		1	
3	574 31 68-01	SCREW		1	
4	574 31 70-01	SCREW		1	
5	575 30 41-01	COVER		1	
6	574 32 61-01	LOOP		1	
7	578 41 06-01	HOUSING ASSY		1	
9	578 41 07-02	HANDLE ASSY		1	
9 1	578 41 07-01	HANDLE ASSY		1	
9 1 1	578 41 08-01	SCREW		4	
9 1 2	578 41 09-01	CLAMP		1	
9 1 3	578 46 32-01	SEAT BRACKET		1	
9 1 4	578 41 30-01	HANDLE		1	
9 1 5	578 41 09-02	CLAMP		1	
9 2	574 32 93-01	HANDLE		1	
9 3	574 31 89-01	SCREW		2	
9 4	578 46 70-01	THROTTLE LEVER		1	
9 5	578 45 84-01	THROTTLE LOCKOUT SPRING		1	
9 6	578 46 69-01	THROTTLE LOCKOUT		1	
9 7	574 32 83-01	THROTTLE CONTROL		1	
9 8	574 31 87-01	STOP CONTROL		1	
9 9	574 32 81-01	RING		1	
9 10	578 46 68-01	SPRING		1	
9 11	578 46 39-01	SCREW		1	
9 12	578 41 10-01	NUT		1	
9 13	578 41 08-02	SCREW		1	
9 14	578 41 11-02	HOUSING		1	
9 15	578 41 08-03	SCREW		7	
9 16	578 41 11-01	HOUSING		1	
9 17	574 32 82-01	SPRING		1	
9 18	578 41 12-01	HOSE		1	
9 19	578 41 13-01	THROTTLE CABLE		1	
9 20	578 41 14-01	WIRE		1	
10	576 02 95-02	SHAFT ASSY		1	
10 1	575 61 65-04	SHAFT ASSY		1	
10 2	545 15 07-01	BRACKET		1	
10 3	530 01 57-75	SCREW		1	
10 4	530 01 60-14	SCREW		1	
10 5	574 80 97-01	GEARBOX		1	
10 6	530 09 58-15	CUP		1	
10 7	537 41 92-11	TRIMMER HEAD		1	
10 8	575 30 64-01	PLUG		1	
11	576 00 88-01	SHIELD		1	
11 1	574 76 48-01	SHIELD		1	
11 2	530 05 22-86	BLADE		1	
11 3	530 01 58-14	SCREW		2	
11 4	530 01 57-71	SCREW		1	
11 5	576 78 97-01	HARNESS		1	
12	576 23 30-01	BLADE HOUSING ASSY		1	
12 1	575 72 56-01	BLADE		1	
12 2	574 31 72-01	TRANSPORT GUARD		2	
13	576 23 31-01	BAG		1	
13 1	530 09 58-16	WASHER		1	
13 2	530 01 62-40	WASHER		1	
13 3	530 01 57-93	NUT		1	
13 4	530 05 64-01	WRENCH		1	
13 5	576 80 94-01	WRENCH		1	