

# **ILLUSTRATED PARTS LIST**

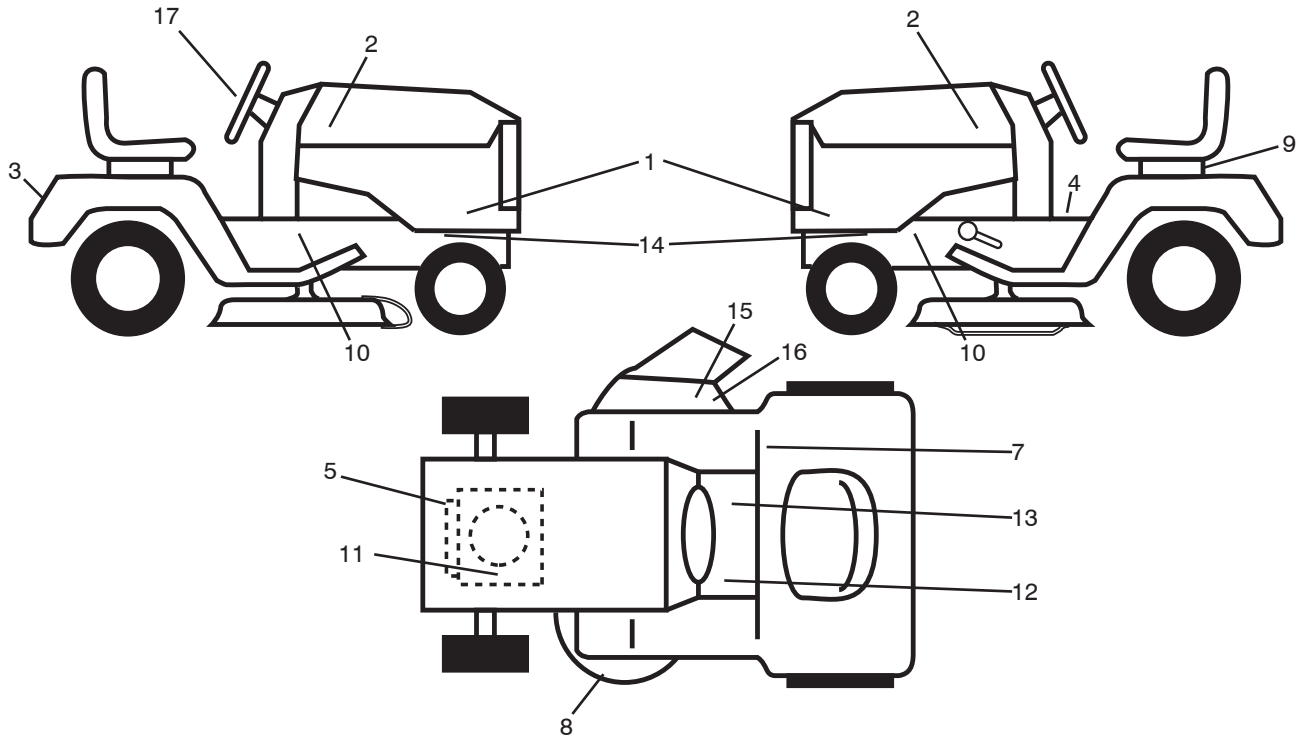
**MODEL NO. 96041027000**

**CUSTOMER CATALOG NO. M145107H**

**PRODUCT NO. 960 41 02-70**

# TRACTOR - - MODEL NO. M145107H (96041027000), PRODUCT NO. 960 41 02-70

## DECALS 27

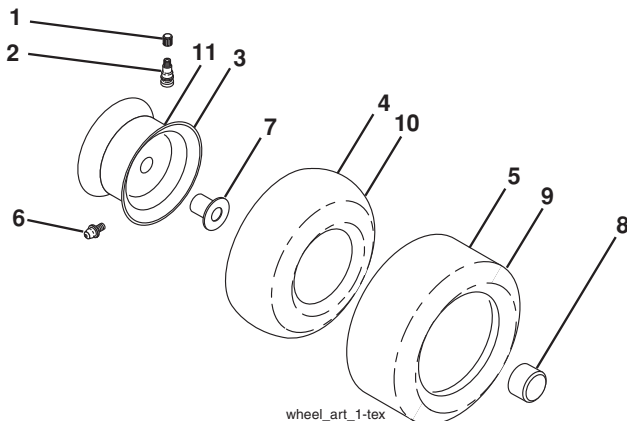


### KEY PART NO. NO.

### DESCRIPTION

1	532 44 64-08	Decal, Panel SD	14	532 18 56-51	Decal, Chas. Turbo Collectn.
2	532 43 78-25	Decal, Hood LH/RH	15	532 18 21-66	Decal, Cutfinger
3	532 44 44-52	Decal, Fender	16	532 19 63-57	Decal, Deflect Wrn. Cutfinger Sym
4	532 40 03-89	Decal, Oper/Wrng.	17	532 43 79-66	Decal, WHL STR.
5	532 43 74-12	Decal, Engine HP	--	532 16 69-60	Decal, Bypass Fender
7	532 18 04-32	Decal, Fender 100 DB/CE	--	532 16 25-98	Decal, Drawbar Load Limit
8	532 16 03-96	Decal, V-Belt Schematic	--	532 40 95-05	Pad, Footrest, LH
9	532 14 50-05	Decal, Battery Dnge/Poi	--	532 41 12-73	Pad, Footrest, RH
10	532 15 97-36	Decal, Chassis Hot Muffler	--	532 44 64-17	Manual Oper. Euro
11	532 19 68-41	Decal, Warning Eng Symbols	--	532 44 64-18	Manual Oper. Scand
12	532 15 97-37	Decal, Brake/Clutch Symbol	--	532 44 64-19	Manual Oper. E-Bloc
13	532 14 08-37	Decal, Saddle Brake Parking	--	532 44 64-20	Manual Oper. Baltic

### WHEELS & TIRES



### KEY PART NO. NO.

### DESCRIPTION

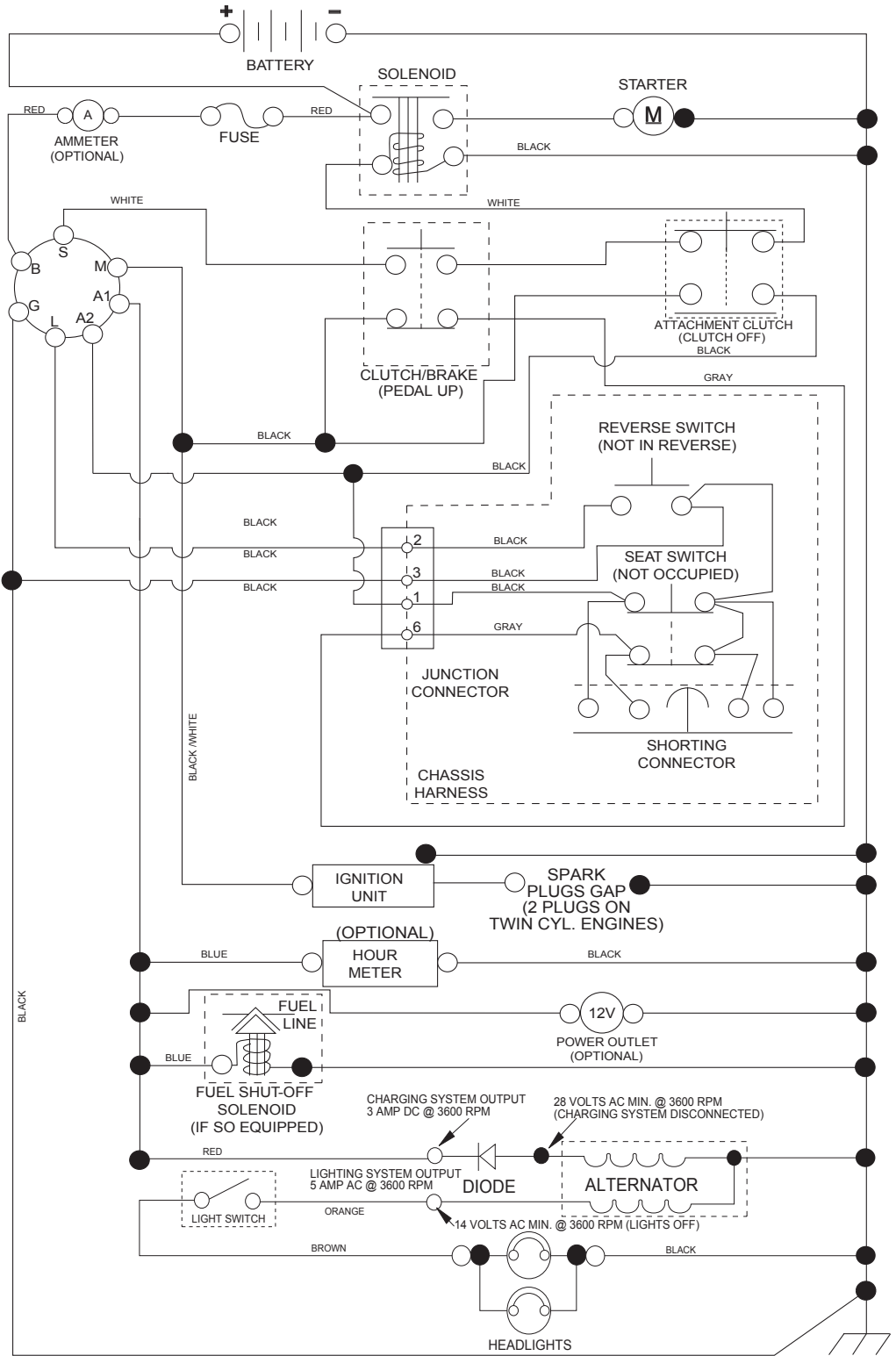
1	532 05 91-92	Cap, Valve, Tire
2	532 06 51-39	Stem, Valve
3	532 12 51-21	Rim Assembly, Front
4	532 05 99-04	Tire, Front
5	532 12 41-57	Tire, Front
6	532 12 49-57	Fitting, Grease
7	532 12 49-59	Bearing, Flange
8	532 17 50-39	Cap, Axle (Front Wheel Only)
9	532 12 39-69	Tire, Rear
10	532 12 49-26	Tube, Rear
11	532 12 51-22	Rim Assembly, Rear
--	532 14 43-34	Sealant, Tire (10 oz. Tube)

**NOTE:** All component dimensions given in U.S. inches  
1 inch = 25.4 mm

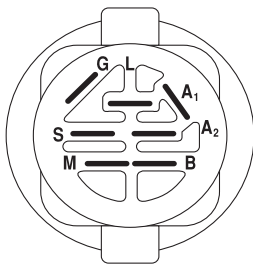
# TRACTOR - - MODEL NO. M145107H (96041027000), PRODUCT NO. 960 41 02-70

## SCHEMATIC **38**

SCH11

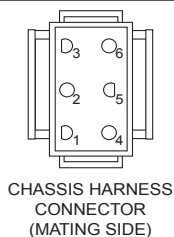


**NOTE**  
 YOUR TRACTOR IS EQUIPPED WITH A SPECIAL ALTERNATOR SYSTEM. THE LIGHTS ARE NOT CONNECTED TO THE BATTERY, BUT HAVE THEIR OWN ELECTRICAL SOURCE. BECAUSE OF THIS, THE BRIGHTNESS OF THE LIGHTS WILL CHANGE WITH ENGINE SPEED. AT IDLE THE LIGHTS WILL DIM. AS THE ENGINE IS SPEEDED UP, THE LIGHTS WILL BECOME THEIR BRIGHTEST.

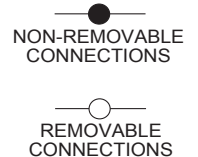


IGNITION SWITCH

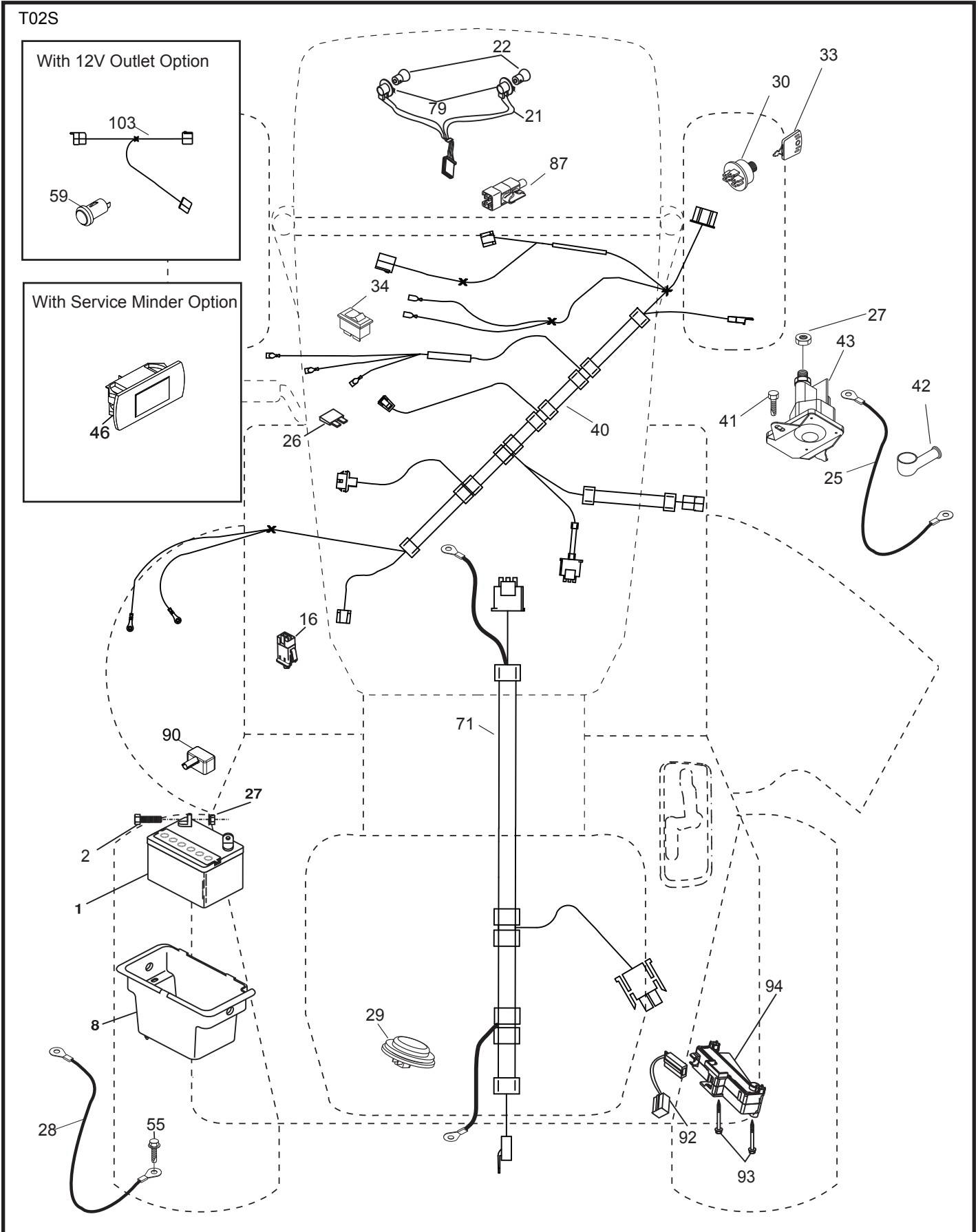
POSITION	CIRCUIT	"MAKE"
OFF	M+G+A1	
RUN/OVERRIDE	B+A1	
RUN	B+A1	L+A2
START	B + S + A1	



WIRING INSULATED CLIPS  
 NOTE: IF WIRING INSULATED CLIPS WERE REMOVED FOR SERVICING OF UNIT, THEY SHOULD BE RE-INSTALLED TO PROPERLY SECURE YOUR WIRING.



TRACTOR - - MODEL NO. M145107H (96041027000), PRODUCT NO. 960 41 02-70  
ELECTRICAL **32**

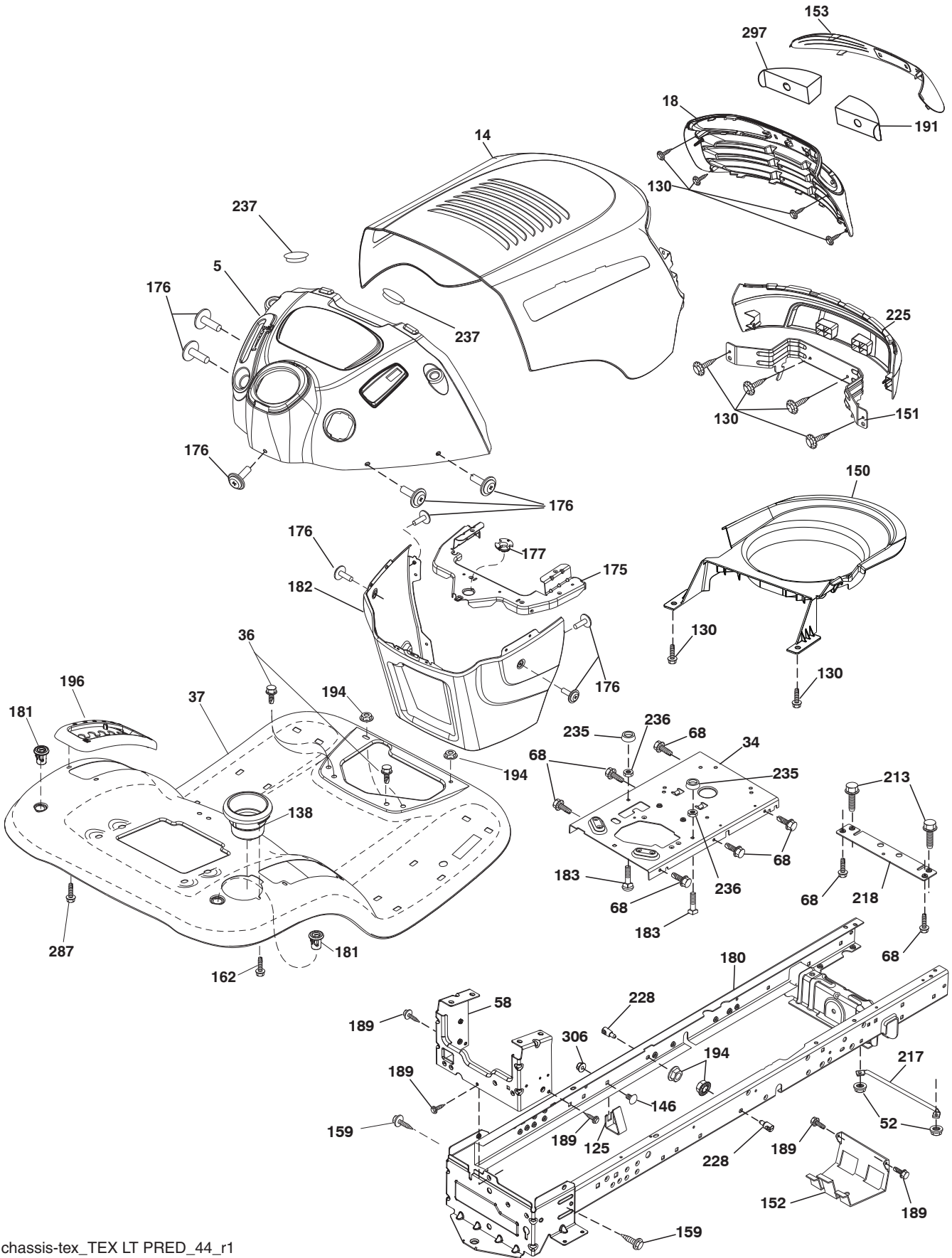


**TRACTOR - - MODEL NO. M145107H (96041027000), PRODUCT NO. 960 41 02-70  
ELECTRICAL 32**

KEY NO.	PART NO.	DESCRIPTION
1	532 16 34-65	Battery
2	874 76 04-12	Bolt Hex Hd 1/4-20 unc x 3/4
8	532 19 32-28	Box Battery
16	532 17 61-38	Switch Interlock Push-In
21	532 40 02-52	Harness Socket Light w/4152J
22	532 00 41-52	Bulb Light
25	532 41 28-94	Cable Starter
26	532 17 51-58	Fuse
27	873 51 04-00	Nut Keps Hex 1/4-20 unc
28	532 19 88-85	Cable, Ground
29	532 40 15-45	Switch, Seat
30	532 19 33-50	Switch, Ign
33	532 41 19-35	Key/Chain
34	532 11 07-12	Switch Light / Reset
40	532 40 10-98	Harness Ign. Dash
41	817 72 04-08	Screw Thd Cut 1/4-20 x 1/2
42	532 13 15-63	Cover, Terminal
43	532 19 25-07	Solenoid
55	817 06 05-12	Screw Thdrol 5/16-18 x 3/4 TYTT
71	532 44 15-44	Harness Ign.
79	532 17 52-42	Bulbholder Asm. Incan Descent
87	532 19 78-02	Switch Interlock Clutch Cable
90	532 43 53-95	Cover Terminal Battery
92	532 19 66-15	Harness Pigtail
93	532 19 25-40	Screw Plastite 10-14 x 2.0
94	532 19 18-34	Module Reverse ROS

**NOTE:** All component dimensions given in U.S. inches  
1 inch = 25.4 mm

TRACTOR -- MODEL NO. M145107H (96041027000), PRODUCT NO. 960 41 02-70  
CHASSIS AND ENCLOSURES **39**



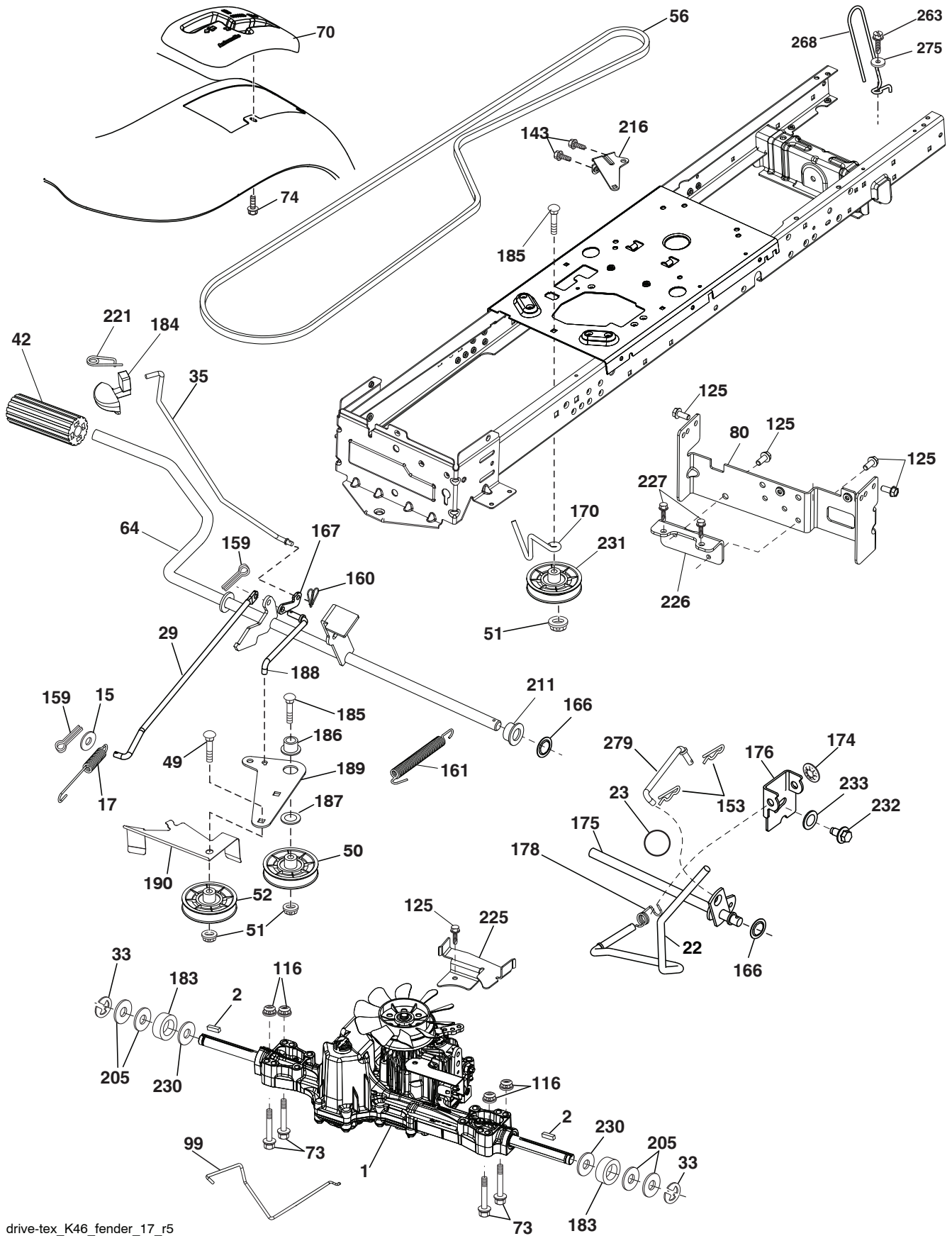
chassis-tex\_TEX LT PRED\_44\_r1

**TRACTOR - - MODEL NO. M145107H (96041027000), PRODUCT NO. 960 41 02-70  
CHASSIS AND ENCLOSURES **39****

<b>KEY NO.</b>	<b>PART NO.</b>	<b>DESCRIPTION</b>
5	532 40 95-97	Dash
14	532 40 95-98	Hood
18	532 42 65-11	Grille
34	532 19 61-25	Plate Engine
36	817 06 05-12	Screw 5/16-18 x 3/4
37	532 42 09-86	Fender
52	873 68 05-00	Nut Crown Lock 5/16-18
58	532 41 22-80	Drawbar Upper
68	817 49 05-08	Screw Thdrol 5/16-18 x 1/2
125	581 68 48-01	Clip Fuel Line
130	532 41 63-58	Screw #10 x 0.750
138	532 40 97-30	Cupholder
146	581 85 79-01	Bolt
150	532 40 83-10	Duct Heat Hood
151	532 18 75-68	Bracket Pivot
152	532 19 95-35	Shield Browning/Debris
153	532 44 42-64	Lens Bar
159	817 00 06-12	Screw Hexwsh Thdrol 3/8-16 x 3/4
162	532 14 24-32	Screw Hex Wsh Hi-Lo 1/4 x 1/2
175	532 19 94-72	Crossmember
176	532 40 07-76	Screw 10-24 x 5/8 Wshd Qdrx
177	532 19 52-28	Bushing Steering
180	532 41 50-63	Chassis
181	532 40 47-96	Bushing Mtg. Fender Crgo.
182	532 40 71-76	Dash Lower
183	874 52 05-20	Bolt 5/16-18 x 1-1/4
189	817 00 05-12	Screw 5/16-18 x 3/4
191	532 41 65-02	Reflector Insert RH
194	873 90 05-00	Nut Lock Hex Flange 5/16-18
196	532 41 45-81	Console Asm. Deck Lift
213	874 76 05-12	Bolt Hex HD 5/16-18 unc x 3/4
217	532 40 91-67	Rod Pivot Chassis
218	532 19 63-95	X-Piece Hood Stop
225	532 44 58-75	Bumper
228	532 19 51-61	Stud Fastener
235	532 40 61-29	Spacer Fender
236	873 93 05-00	Nut Centerlock 5/16 - 18 unc
237	532 40 37-04	Plug Mount Cargo
287	817 60 04-06	Screw 1/4-20 x 3/8
297	532 40 18-27	Reflector Insert LH
306	873 90 06-00	Nut Lock

**NOTE:** All component dimensions given in U.S. inches  
1 inch = 25.4 mm

TRACTOR -- MODEL NO. M145107H (96041027000), PRODUCT NO. 960 41 02-70  
DRIVE **40**



drive-tex\_K46\_fender\_17\_r5

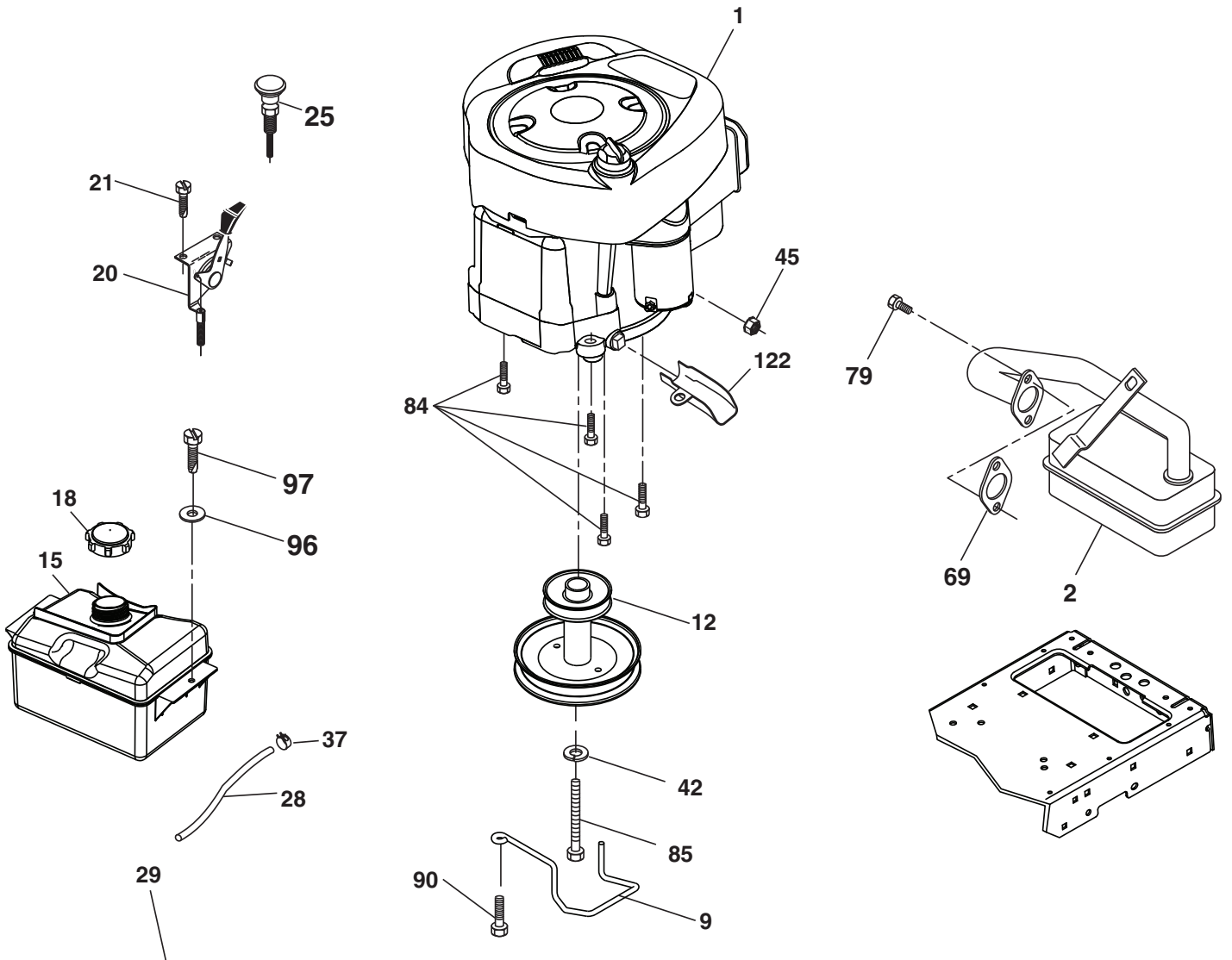


**TRACTOR - - MODEL NO. M145107H (96041027000), PRODUCT NO. 960 41 02-70  
DRIVE **40****

<b>KEY PART NO. NO.</b>	<b>DESCRIPTION</b>	<b>KEY PART NO. NO.</b>	<b>DESCRIPTION</b>
1	----- Transaxle, Tuff Torq K46 BA (408214)(Order parts from transaxle manufacturer.)	170	532 41 34-30 Keeper Belt Centerspan
2	532 12 35-83 Key Square	174	532 19 72-89 Nut Push
15	819 13 13-16 Washer 13/32 x 13/16 x 16 Ga.	175	532 40 85-39 Shaft Asm Shift
17	532 41 36-78 Spring, Brake	176	532 19 62-14 Arm Clevis Rod Shift
22	532 19 76-60 Rod Shift	178	532 19 74-56 Spring Shift
23	532 44 58-76 Knob	183	532 13 70-57 Spacer Axle
29	532 40 38-06 Rod, Brake	184	532 44 14-07 Handle Parking Brake
33	812 00 00-01 Ring E	185	872 11 06-22 Bolt 3/8-16 unc x 2-3/4 Gr. 5
35	532 40 10-31 Rod, Brake, Park	186	532 19 43-21 Spacer Retainer
42	532 12 48-72 Cover, Foot Pedal	187	819 13 32-10 Washer
49	872 11 06-14 Bolt	188	532 19 43-23 Link Clutch Ground Drive
50	532 19 43-27 Pulley Idler Flat	189	532 19 43-17 Bellcrank Ground Drive
51	873 90 06-00 Lock Nut 3/8-16	190	532 19 43-18 Keeper Bellcrank Ground Drive
52	532 19 43-26 Idler V-Groove 910" Offset	205	532 12 17-48 Washer 25/32 x 1-5/8 x 16 Ga.
56	532 13 09-69 V-Belt, Drive	211	532 19 62-12 Bushing Shaft
64	532 19 62-00 Shaft Asm. Pedal Brake Control	216	532 19 61-31 Bracket Pulley Idler
70	532 41 13-29 Console	221	532 40 31-87 Retainer Spring Clip Handle
73	874 49 05-40 Bolt 5/16-18 x 2-1/2 Gr. 5	225	532 40 33-19 Keeper Belt Transaxle
74	532 14 24-32 Screw 1/4 x 1/2	226	532 40 15-64 Bracket Strap Torque
80	532 44 06-19 Strap Torque	227	817 49 05-12 Screw 5/16-18 x 3/4
99	532 41 57-42 Rod Spring Bypass	230	532 18 89-67 Washer Harden .793 x 1.637 x 0.60
116	873 90 05-00 Nut Lock Hex Flange 5/16-18	231	532 40 72-87 Idler V-Groove 1.688" Offset
125	817 00 05-12 Screw 5/16-8 x 3/4	232	874 78 07-16 Bolt 7/16-14 x 1 Gr. 5
143	817 49 05-08 Screw Thdrol 5/16-18 x 1/2	233	532 40 52-96 Washer Serrated
153	532 12 47-88 Retainer Spring 1"	263	817 00 06-12 Screw Hex Wsh Thbr 3/8-16 x 3/4
159	876 02 04-12 Pin Cotter 1/8 x 3/4	268	532 18 24-02 Guard, Muffler
160	532 16 94-84 Retainer Clip	275	819 13 16-14 Washer 13/32 x 1 x 14 Ga.
161	532 10 57-09 Spring, Return, Clutch	279	532 41 31-50 Link Shift
166	532 42 91-64 Nut Push .625		
167	532 40 52-57 Latch Brake Parking		

**NOTE:** All component dimensions given in U.S. inches  
1 inch = 25.4 mm

TRACTOR - - MODEL NO. M145107H (96041027000), PRODUCT NO. 960 41 02-70  
ENGINE **24**



**OPTIONAL EQUIPMENT**  
**Spark Arrester**

engine-tex\_BS\_37

**TRACTOR - - MODEL NO. M145107H (96041027000), PRODUCT NO. 960 41 02-70  
ENGINE 24**

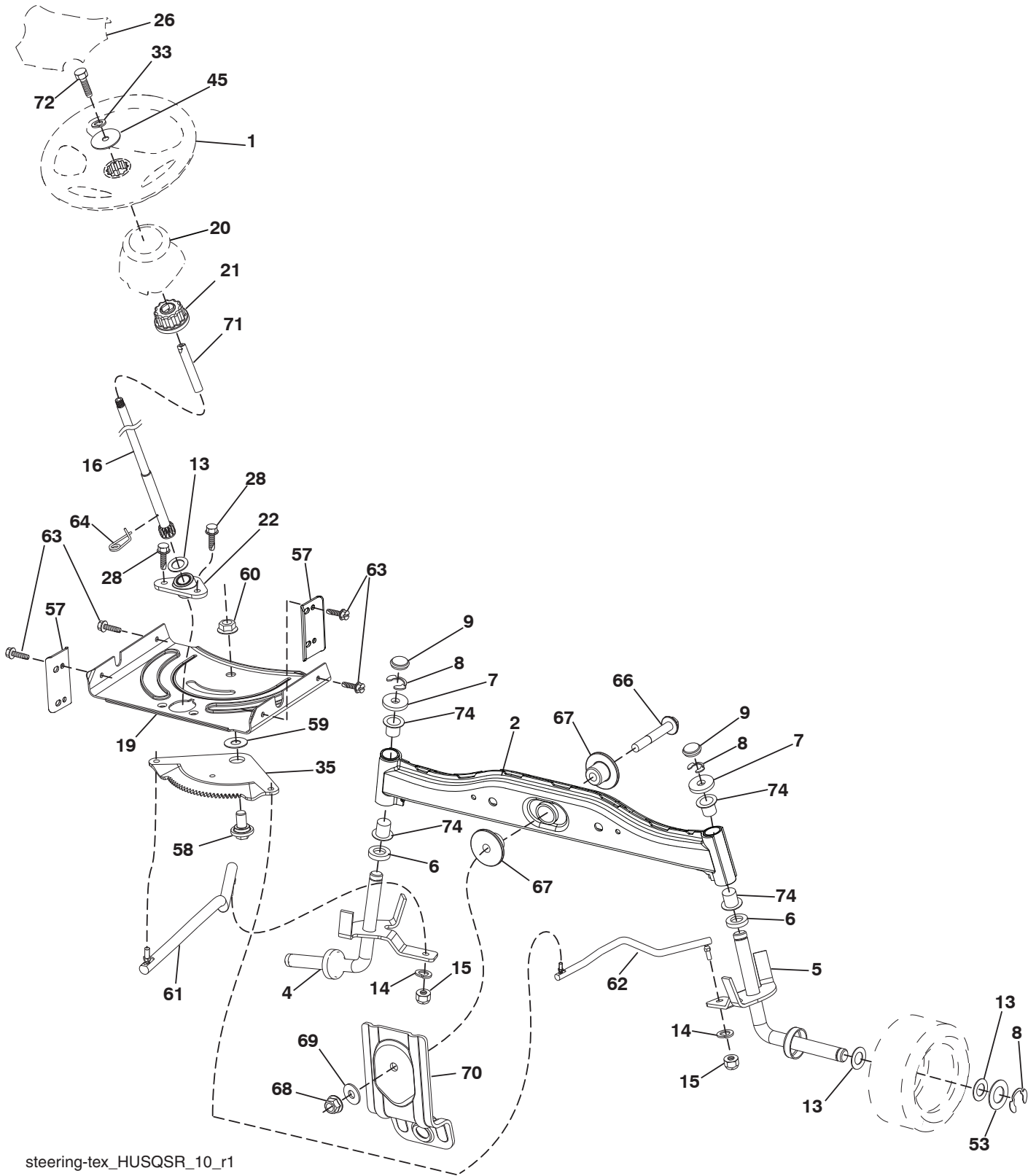
KEY NO.	PART NO.	DESCRIPTION
1	— — — — —	Engine B&S Model No. 31A507-2391-B1 (438618)(Order parts from engine manufacturer.)
2	532 13 73-52	Muffler
9	532 19 43-20	Keeper Belt Engine
12	532 40 54-71	Pulley Engine
15	532 40 75-45	Tank Fuel
18	532 43 02-20	Cap Fuel
20	532 41 17-24	Control Throttle/Choke
21	532 41 63-58	Screw #10 x 0.750
25	532 41 17-25	Choke Control
28	532 13 70-40	Fuel Line
29	532 13 71-80	Spark Arrester Kit
37	532 12 34-87	Clamp Hose
42	810 04 07-00	Washer Lock 7/16
45	873 51 04-00	Nut Keps Hex 1/4-20 unc
69	532 16 52-91	Gasket
79	532 19 23-34	Screw Socket Hd 5/16-18 x .75
84	817 06 06-20	Screw 3/8-16 x 1-1/4
85	532 17 39-37	Bolt Hex 7/16-20 x 4 x Gr. 5-1.5
90	817 00 06-16	Screw 3/8-16 x 1
96	819 09 14-16	Washer 9/32 x 7/8 x 16 Ga.
97	817 67 04-12	Screw 1/4-20 x 3/4
122	532 42 19-22	Extension Drain Oil

**NOTE:** All component dimensions given in U.S. inches  
1 inch = 25.4 mm

**Engine Power Rating Information**

The gross power rating for individual gas engine models is labeled in accordance with SAE (Society of Automotive Engineers) code J1940 (Small Engine Power & Torque Rating Procedure), and rating performance has been obtained and corrected in accordance with SAE J1995 (Revision 2002-05). Torque values are derived at 3060 RPM; horsepower values are derived at 3600 RPM. Actual gross engine power will be lower and is affected by, among other things, ambient operating conditions and engine-to-engine variability. Given both the wide array of products on which engines are placed and the variety of environmental issues applicable to operating the equipment, the gas engine will not develop the rated gross power when used in a given piece of power equipment (actual "on-site" or net power). This difference is due to a variety of factors including, but not limited to, accessories (air cleaner, exhaust, charging, cooling, carburetor, fuel pump, etc.), application limitations, ambient operating conditions (temperature, humidity, altitude), and engine-to-engine variability. Due to manufacturing and capacity limitations, Briggs & Stratton may substitute an engine of higher rated power for this Series engine.

TRACTOR - - MODEL NO. M145107H (96041027000), PRODUCT NO. 960 41 02-70  
STEERING ASSEMBLY **41**



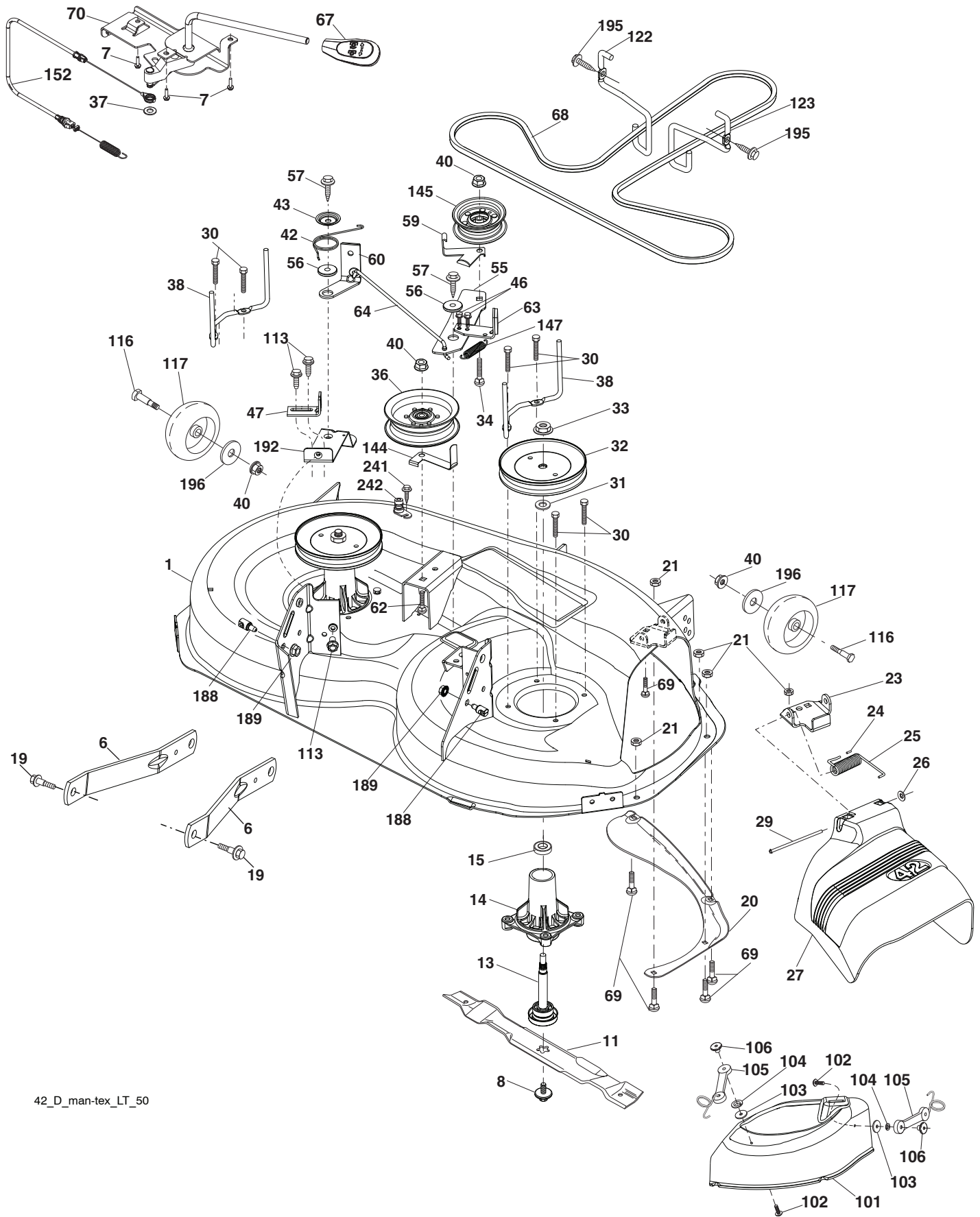
steering-tex\_HUSQSR\_10\_r1

**TRACTOR - - MODEL NO. M145107H (96041027000), PRODUCT NO. 960 41 02-70  
STEERING ASSEMBLY **41****

<b>KEY NO.</b>	<b>PART NO.</b>	<b>DESCRIPTION</b>
1	532 42 41-46	Wheel, Steering
2	532 41 81-68	Axle Asm.
4	532 40 30-87	Spindle Asm., LH
5	532 40 30-88	Spindle Asm., RH
6	532 12 49-31	Bearing, Race Thrust Harden
7	532 12 17-48	Washer 25/32 x 1-5/8 x 16 Ga.
8	812 00 00-29	Ring, Klip #T5304-75
9	532 12 12-32	Cap, Spindle
13	532 12 17-49	Washer 25/32 x 1-1/4 x 16 Ga.
14	810 04 06-00	Washer Lock 3/8
15	873 54 06-00	Nut, Crown Lock 3/8-24 unf
16	532 42 93-73	Shaft Steering
19	532 19 47-29	Plate Steering
20	532 40 97-63	Boot, Steering
21	532 18 67-37	Adapter, Wheel Steering
22	532 42 05-37	Strg. Supt. Lower
26	532 42 41-47	Insert, Wheel Steering
28	817 00 06-12	Screw 3/8-16 x 3/4
33	810 04 05-00	Washer Lock 5/16
35	532 19 47-32	Gear, Sector Plate
45	819 11 38-12	Washer 11/32 x 2-3/8 x 12 Ga.
53	532 18 89-67	Washer Hardened .793 x 1.637 x .060
57	532 40 74-65	Bracket Upstop
58	532 19 47-47	Bolt Shoulder Sector Pivot CFM
59	532 19 47-48	Washer Thrust Sector Steering
60	873 97 10-00	Nut Flange Lock 5/8-11
61	532 19 47-40	Draglink, LH
62	532 19 47-41	Draglink, RH
63	817 00 05-12	Screw 5/16-18 x 3/4
64	532 19 98-49	Retainer Clip Spring Steering
66	871 02 07-48	Bolt Hex Fghd 7/16-14 x 3 Serr
67	532 19 47-37	Bushing PM Front Axle
68	873 90 07-00	Nut Lock Flange 7/16-14 Gr. 5
69	532 19 91-62	Washer 1.5 x .505 x .118
70	532 19 61-97	Bracket Deck Susp. Front
71	532 19 07-52	Shaft Ext. Steering
72	532 42 89-82	Bolt 5/16-18 x W/Patch
74	532 12 49-37	Bearing

**NOTE:** All component dimensions given in U.S. inches  
1 inch = 25.4 mm

**TRACTOR - - MODEL NO. M145107H (96041027000), PRODUCT NO. 960 41 02-70**  
**MOWER DECK 44**



42\_D\_man-tex\_LT\_50

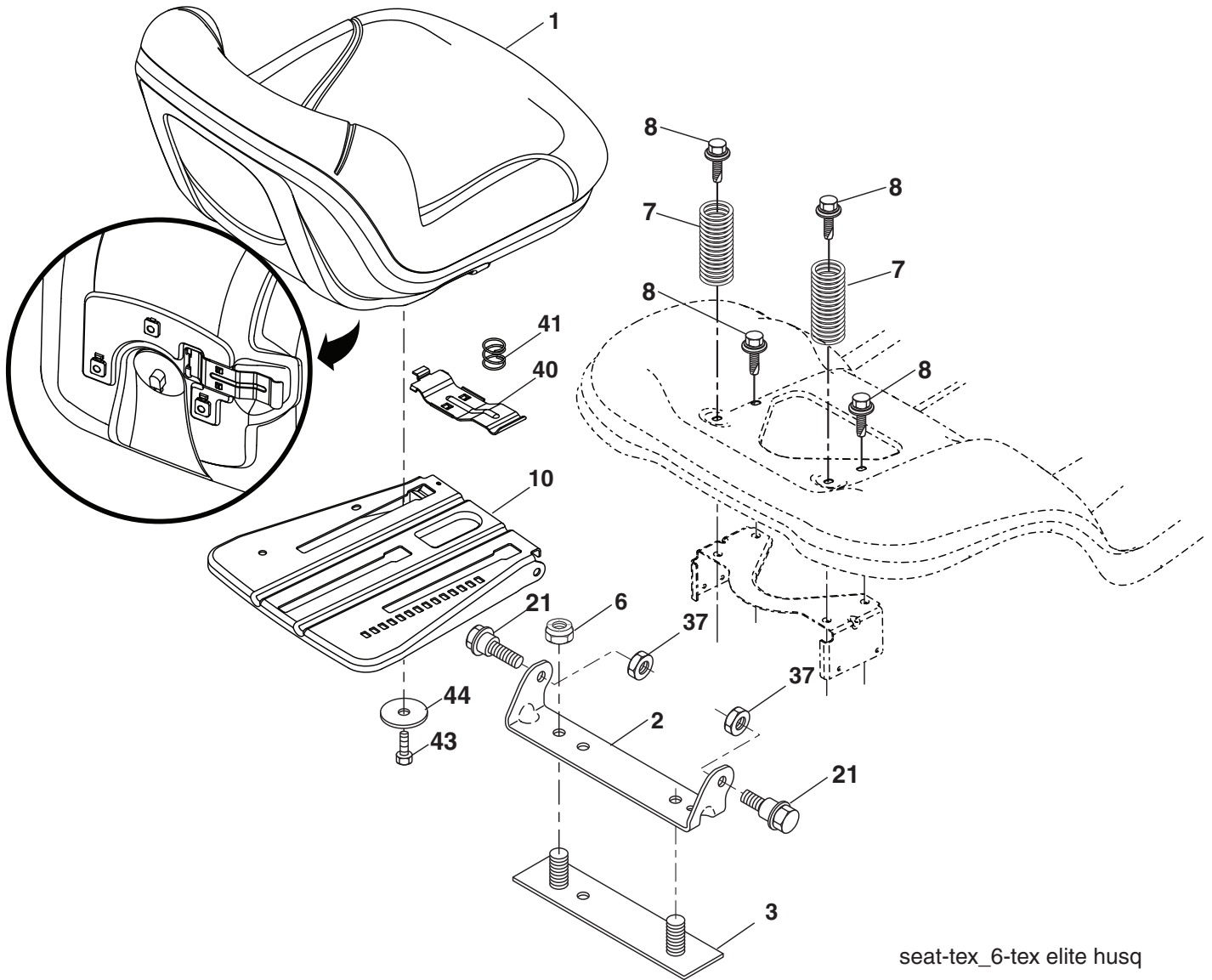
**TRACTOR - - MODEL NO. M145107H (96041027000), PRODUCT NO. 960 41 02-70  
MOWER DECK **44****

KEY NO.	PART NO.	DESCRIPTION	KEY NO.	PART NO.	DESCRIPTION
1	532 19 64-95	Mower Housing	64	532 19 97-90	Linkage Brake
6	532 19 51-86	Arm Suspension	67	532 40 97-92	Handle, Clutch Cable
7	532 41 63-58	Screw #10 x 0.750	68	532 42 96-36	V-Belt
8	532 19 30-03	Bolt/Washer asm 7/16-20 unf	69	872 14 05-05	Bolt Rdhd Sqnk 5/16-18 x 5/8
11	532 13 41-49	Blade, 42" Mulching Std (For mulching mowers only)	70	532 40 12-46	Clutch Asm. Manual
13	532 19 28-72	Shaft Assembly, Mandrel	101	532 19 31-07	Cover Mulching
14	532 18 72-81	Housing, Mandrel	102	871 08 10-10	Screw 10-24 x 5/8
15	532 11 04-85	Bearing, Ball, Mandrel	103	819 06 12-16	Washer #10
19	532 19 65-39	Bolt, Shoulder	104	810 07 10-00	Washer Lock #10
20	532 15 97-70	Baffle, Vortex	105	532 16 07-93	Latch Asm
21	873 68 05-00	Nut, Crownlock 5/16-18 unc	106	532 12 50-04	Nut Weld
23	532 19 25-57	Bracket, Deflector	113	817 00 05-10	Screw 5/16-18
24	532 10 53-04	Cap, Sleeve	116	532 12 48-42	Bolt, Shoulder
25	532 19 70-26	Spring, Torsion, Deflector	117	532 18 86-06	Wheel, Gauge
26	532 11 04-52	Nut, Push	122	532 19 72-58	Keeper Belt Eng. LH
27	532 40 30-04	Shield, Deflector	123	532 19 72-59	Keeper Belt Eng. RH
29	532 13 14-91	Rod, Hinge	144	532 19 92-04	Keeper Belt
30	532 17 39-84	Screw Thdrol Rolling Wsh Hd	145	532 19 31-97	Pulley, Idler, Flat
31	532 18 76-90	Washer, Spacer	147	532 40 19-71	Spring Return
32	532 19 74-73	Pulley, Mandrel	152	532 43 51-11	Cable Clutch Manual w/Spr.
33	532 40 02-34	Nut, Toplock, Flanged	188	532 19 51-61	Stud Fastener
34	872 11 06-12	Bolt Carr Sh. 3/8-16 x 1-1/2 Gr. 5	189	873 90 05-00	Nut Lock Hex Flange
36	532 19 73-79	Pulley Idler	192	532 19 72-60	Bracket Brake Stand LH
37	819 13 13-16	Washer 13/32 x 13/16 x 16 Ga.	195	817 00 06-12	Screw Hexwsh Thdr 3/8-16 x 3/4
38	532 43 25-20	Keeper Belt Mandrel	196	819 12 14-14	Washer 13/32 x 7/8 x 14 Ga.
40	873 90 06-00	Nut, Lock Flg. 3/8-16 unc	241	532 15 29-27	Screw TT #10-32.5 3/8 Flange
42	532 19 84-10	Spring Trosion Brake	242	532 41 55-98	Port Washout
43	532 19 72-56	Spring Torsion Retainer	--	532 19 28-70	Mandrel Assembly (Includes housing, shaft and shaft hardware only-pulley not included)
46	532 13 77-29	Screw Thd Roll 1/4-20 x 5/8	--	532 43 16-13	Replacement Mower, Complete
47	532 19 72-50	Bracket Clutch Cable			
55	532 43 71-10	Arm, Idler			
56	532 19 90-92	Spacer, Retainer			
57	817 00 06-16	Screw Hexwsh Thd 3/8-16 x 1			
59	532 14 10-43	Guard, Tuv Idler (94)			
60	532 19 72-61	Arm Brake Mower			
62	872 11 06-16	Bolt Rdhd Sqnk 3/8-16 unc x 2			
63	532 19 94-77	Arm Brake Mower			

**NOTE:** All component dimensions given in U.S. inches  
1 inch = 25.4 mm



**TRACTOR - - MODEL NO. M145107H (96041027000), PRODUCT NO. 960 41 02-70  
SEAT ASSEMBLY 42**



seat-tex\_6-tex elite husq

**KEY PART  
NO. NO.**

**DESCRIPTION**

1	532 41 14-05	Seat
2	532 18 01-66	Bracket Pivot Fender
3	532 14 06-75	Strap, Asm Fender
6	873 80 06-00	Nut, Lock w/Ins. 3/8-16 unc
7	532 12 41-81	Spring, Seat Cprsn
8	532 17 18-77	Bolt 5/16-18 unc x 3/4 w/Sems
10	532 19 69-77	Pan, Seat
21	532 17 18-52	Bolt, Shoulder 5/16-18
37	873 80 05-00	Nut, Lock 5/16-18 unc

**KEY PART  
NO. NO.**

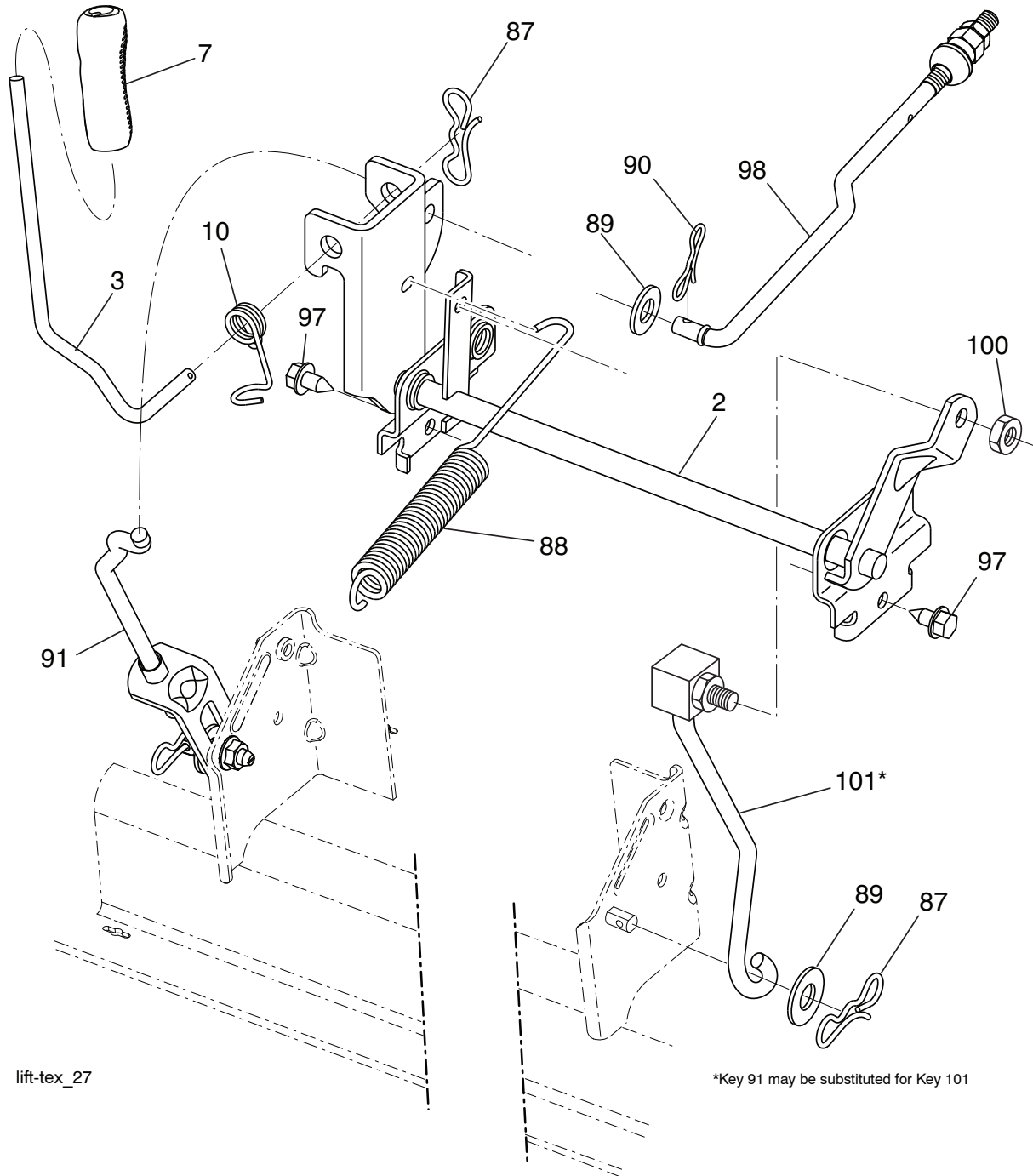
**DESCRIPTION**

40	532 19 76-61	Handle Slide Seat
41	532 19 82-00	Spring Latch Seat
43	874 76 06-12	Bolt Fin Hex 3/8-16 unc x 3/4
44	819 13 38-12	Washer 13/32 x 2-3/8 x 12 Ga.

**NOTE:** All component dimensions given in U.S. inches  
1 inch = 25.4 mm



**TRACTOR - - MODEL NO. M145107H (96041027000), PRODUCT NO. 960 41 02-70**  
**MOWER LIFT 45**



lift-tex\_27

\*Key 91 may be substituted for Key 101

KEY NO.	PART NO.	DESCRIPTION
2	532 42 20-27	Shaft Asm., Lift
3	532 19 52-31	Lever Asm., Lift RH
7	532 41 17-42	Grip, Lever
10	532 19 63-14	Spring Torsion
87	532 19 42-09	Pin Cotter 7/16 Bow Tie Lock
88	532 41 07-10	Spring Lift Assist
89	819 19 19-12	Washer Clear Zinc
90	532 19 42-08	Pin Cotter 5/16 Bow Tie Lock

KEY NO.	PART NO.	DESCRIPTION
91	532 19 51-81	Link Lift Susp Mower Rear
97	817 00 06-12	Screw 3/8-16 x 3/4
98	532 19 52-70	Link Lift Susp. Front Mower
100	873 93 06-00	Nut Centerlock 3/8-16 unc
101	532 40 70-03	Link Asm. Lift FXD

**NOTE:** All component dimensions given in U.S. inches  
 1 inch = 25.4 mm

