

Subject: LRV(b) RIDER CLUTCH ADJUSTMENT

Complaint: Unit will not move or clutch slips.

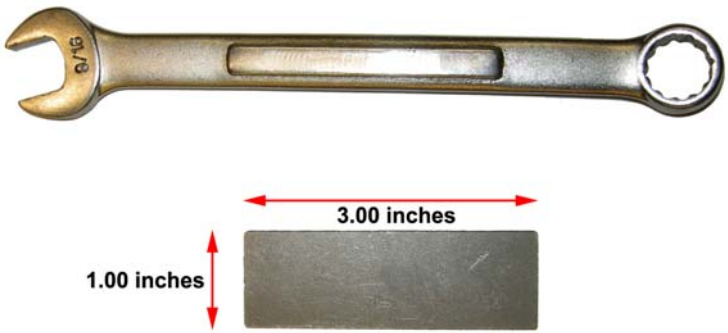
Solution: Adjust loose clutch on LRV(b) rider.

Models Affected: LRV(b) RIDERS

PRODUCT ID	BRAND
96022001200	Poulan Pro
96022001300	McMulloch
96022001400	Poulan Pro
96025000300	Poulan Pro
96025000400	Poulan Pro
96026000100	Weedeater
96028000200	McMulloch

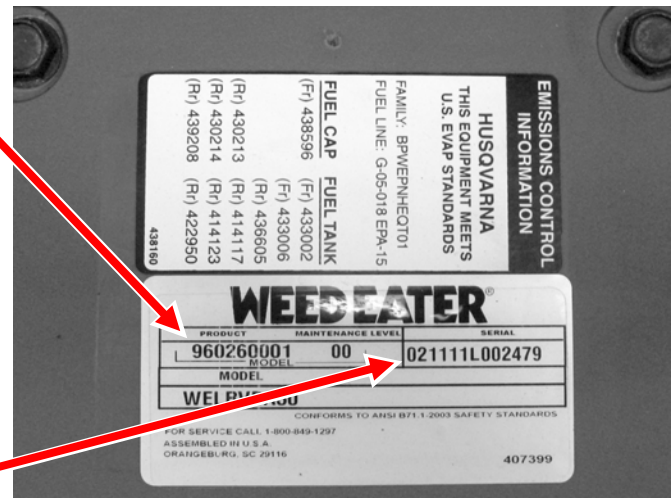
Serial Numbers Date Codes Affected: 012211L001001 thru 050611LXXXXX
(050611 is May 6th 2011)

Service Information:

<p>1. The tools needed for this adjustment are:</p> <ul style="list-style-type: none">• 9/16 inch wrench• Gauge is 1 inch by 3 inches.	
---	--

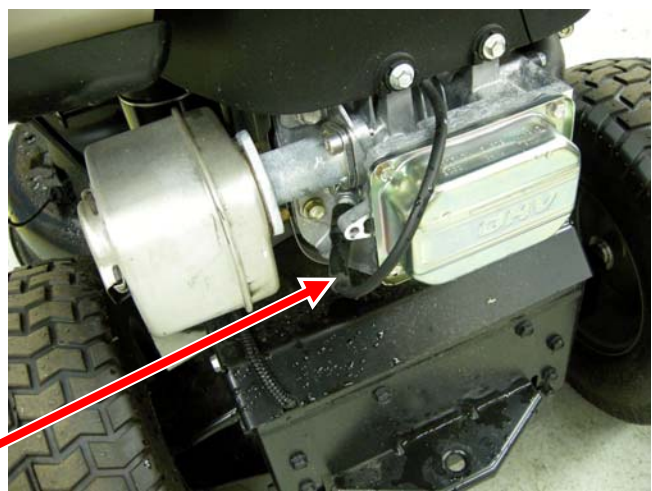
PRODUCT NUMBER

2. The model plate is located on the control panel under the seat. Record the complete product number with maintenance level and the complete serial number of the rider on the service order.



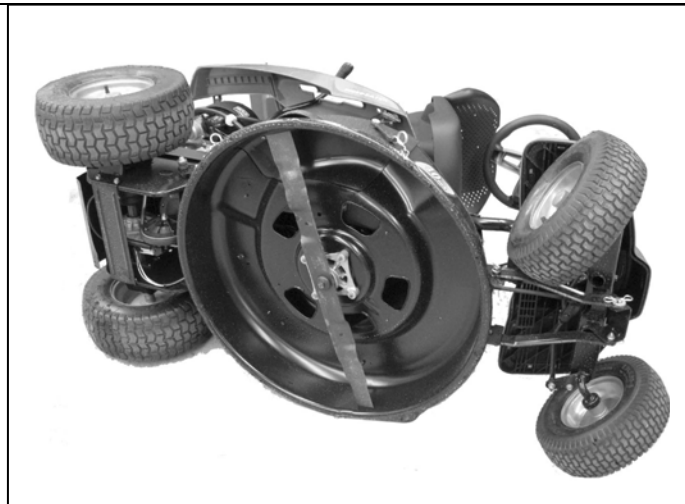
SERIAL NUMBER

3. The rider must be on a level surface.
4. While working on the rider remove the spark plug wire from the spark plug.
5. Remove the ignition key while working.
6. The parking brake must be disengaged while making this adjustment.



SPARK PLUG WIRE

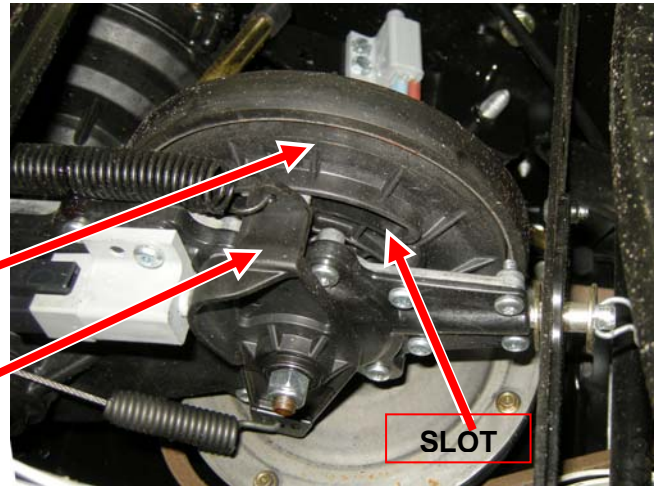
7. The adjustment can be performed from the underside of the transmission.
 - The underside of the transmission can be accessed by either lifting the rider from the rear engine plate or by placing the rider on it's left side (carburetor and air filter up).
 - If you elect to place the rider on the left side, place a cover between the control panel and mower lift lever and the ground to protect from scratches and abrasion to the finishes.



8. Locate the slot in the left clutch cover.

L.H. CLUTCH COVER

BRAKE ARM

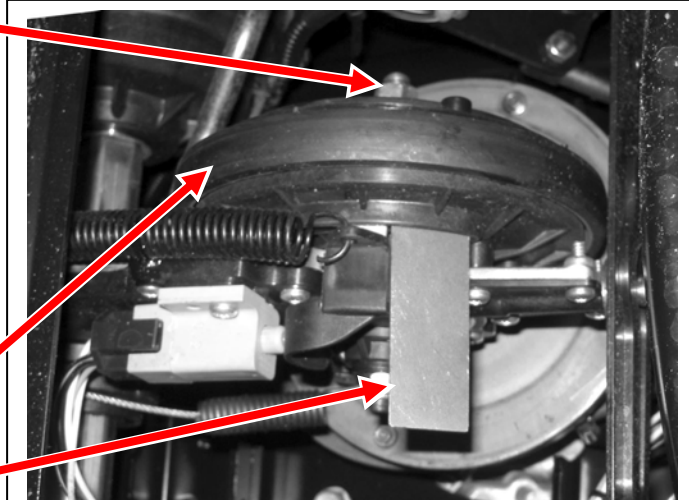


9. Insert the gauge into the slot while making the adjustment.

ADJUSTMENT NUT

FRICION WHEEL

GAUGE



10. Hold the friction wheel while tightening the adjustment nut until the gauge is lightly clamped between the brake arm and the slot in the clutch cover.

- Remove the gauge.
- Test drive the rider.

NOTE: If the nut bottoms out before the brake arm is tight against the gauge there is no more adjustment.

- When there is no more adjustment and the rider does not perform adequately, replace the 443885 Primary Reduction Assembly with Clutch.

