

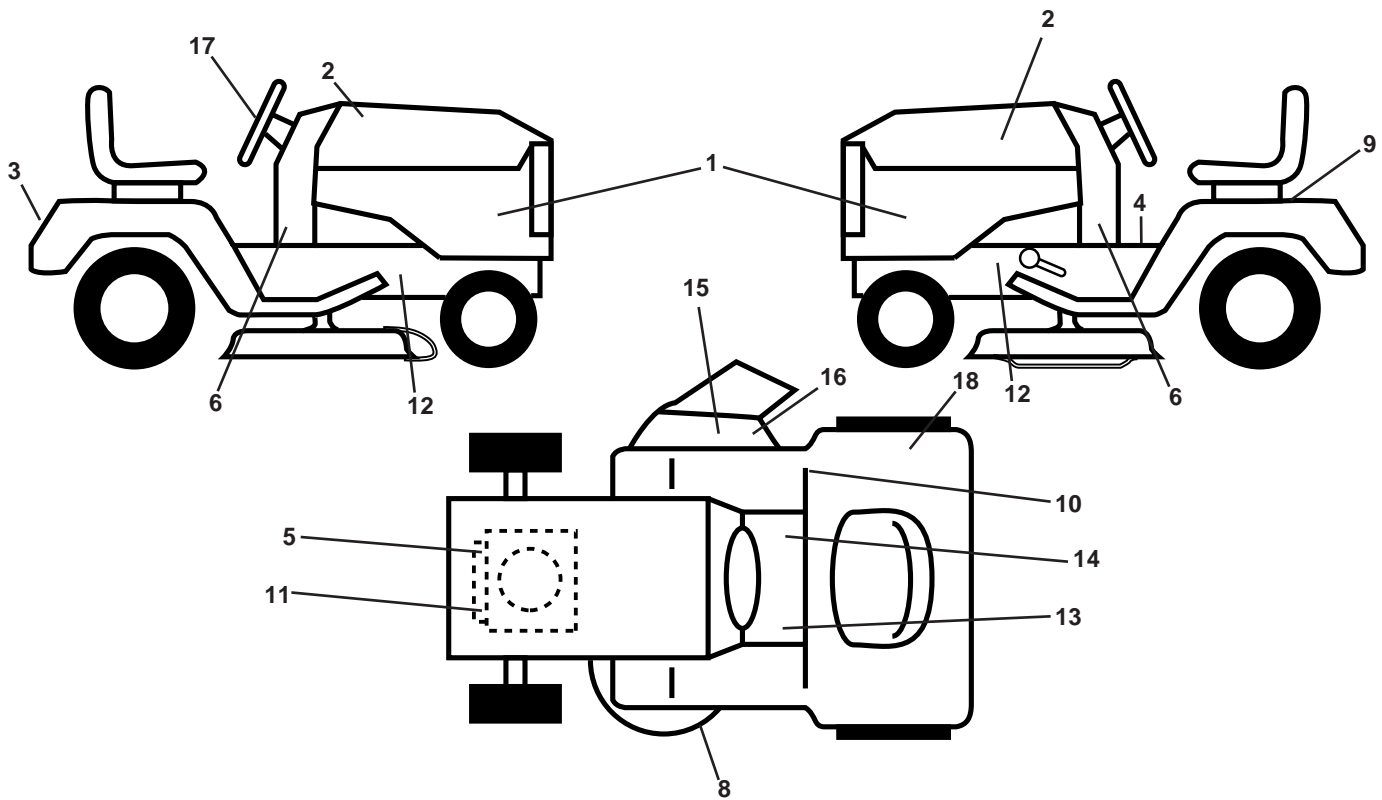
# **ILLUSTRATED PARTS LIST**

**MODEL NO. 96041011700**

**CUSTOMER CATALOG NO. M16538H**

**PRODUCT NO. 960 41 01-17**

**TRACTOR - - MODEL NO. M16538H (96041011700), PRODUCT NO. 960 41 01-17  
DECALS**



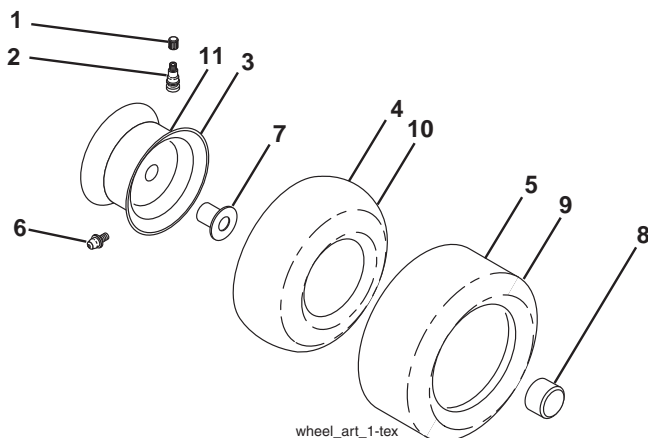
**KEY PART  
NO. NO.**

| KEY PART NO. | PART NO.     | DESCRIPTION                |
|--------------|--------------|----------------------------|
| 1            | 532 42 42-53 | Decal, Panel SD            |
| 2            | 532 43 11-71 | Decal, Hood RH/LH          |
| 3            | 532 42 42-54 | Decal, Fender              |
| 4            | 532 40 03-89 | Decal, Oper/Wrng.          |
| 5            | 532 40 88-18 | Decal, Engine HP           |
| 6            | 532 18 56-51 | Decal, Chassis Turbo       |
| 8            | 532 19 43-02 | Decal, V-Belt Schematic    |
| 9            | 532 14 50-05 | Decal, Battery Dan./Poi.   |
| 10           | 532 12 44-33 | Decal, DBA                 |
| 11           | 532 19 68-41 | Decal, Warning Eng. Syms.  |
| 12           | 532 15 97-36 | Decal, Chassis Hot Muffler |
| 13           | 532 15 97-37 | Decal, Brake/Clutch Sym.   |

**KEY PART  
NO. NO.**

| KEY PART NO. | PART NO.     | DESCRIPTION                        |
|--------------|--------------|------------------------------------|
| 14           | 532 14 08-37 | Decal, Saddle Brake Parking        |
| 15           | 532 18 21-66 | Decal, Cutfinger CE                |
| 16           | 532 19 63-57 | Decal, Deflect Wrn. Cutfinger Sym. |
| 17           | 532 42 42-36 | Decal, WHL. STR.                   |
| 18           | 532 16 88-69 | Decal, Tick Mark                   |
| --           | 532 16 69-60 | Decal, Bypass                      |
| --           | 532 16 25-98 | Decal, Drawbar Load Limit          |
| --           | 532 40 95-05 | Pad, Footrest, LH                  |
| --           | 532 41 12-73 | Pad, Footrest, RH                  |
| --           | 532 42 28-76 | Manual, Operator's (Eng.)          |

**WHEELS AND TIRES**



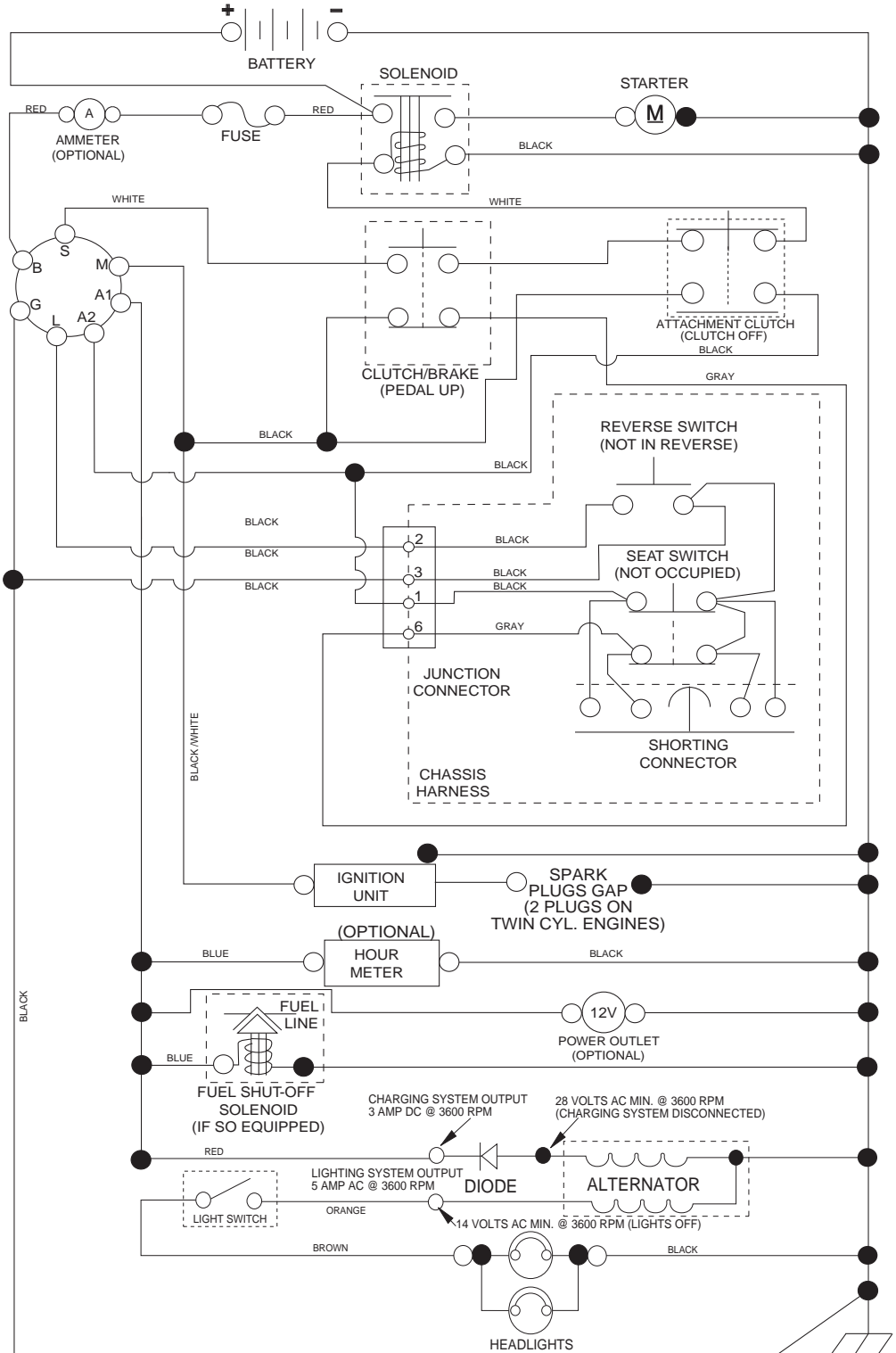
**KEY PART  
NO. NO.**

| KEY PART NO. | PART NO.     | DESCRIPTION                  |
|--------------|--------------|------------------------------|
| 1            | 532 05 91-92 | Cap, Valve, Tire             |
| 2            | 532 06 51-39 | Stem, Valve                  |
| 3            | 532 12 51-21 | Rim Assembly, Front          |
| 4            | 532 05 99-04 | Tube, Front                  |
| 5            | 532 10 62-22 | Tire, Front                  |
| 6            | 532 12 49-57 | Fitting, Grease              |
| 7            | 532 12 49-59 | Bearing, Flange              |
| 8            | 532 17 50-39 | Cap, Axle (Front Wheel Only) |
| 9            | 532 12 46-35 | Tire, Rear                   |
| 10           | 532 12 49-26 | Tube, Rear                   |
| 11           | 532 12 51-22 | Rim Assembly, Rear           |
| --           | 532 14 43-34 | Sealant, Tire (10 oz. Tube)  |

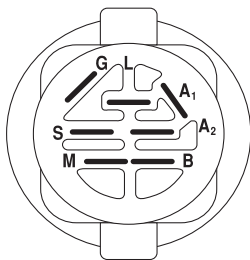
**NOTE:** All component dimensions given in U.S. inches  
1 inch = 25.4 mm

# TRACTOR - - MODEL NO. M16538H (96041011700), PRODUCT NO. 960 41 01-17 SCHEMATIC

SCH11

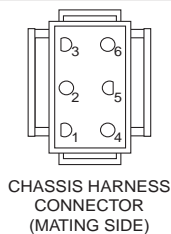


**NOTE**  
YOUR TRACTOR IS EQUIPPED WITH A SPECIAL ALTERNATOR SYSTEM. THE LIGHTS ARE NOT CONNECTED TO THE BATTERY, BUT HAVE THEIR OWN ELECTRICAL SOURCE. BECAUSE OF THIS, THE BRIGHTNESS OF THE LIGHTS WILL CHANGE WITH ENGINE SPEED. AT IDLE THE LIGHTS WILL DIM. AS THE ENGINE IS SPEEDED UP, THE LIGHTS WILL BECOME THEIR BRIGHTEST.

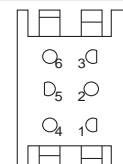


IGNITION SWITCH

| POSITION     | CIRCUIT    | "MAKE" |
|--------------|------------|--------|
| OFF          | M+G+A1     |        |
| RUN/OVERRIDE | B+A1       |        |
| RUN          | B+A1       | L+A2   |
| START        | B + S + A1 |        |



CHASSIS HARNESS CONNECTOR (MATING SIDE)



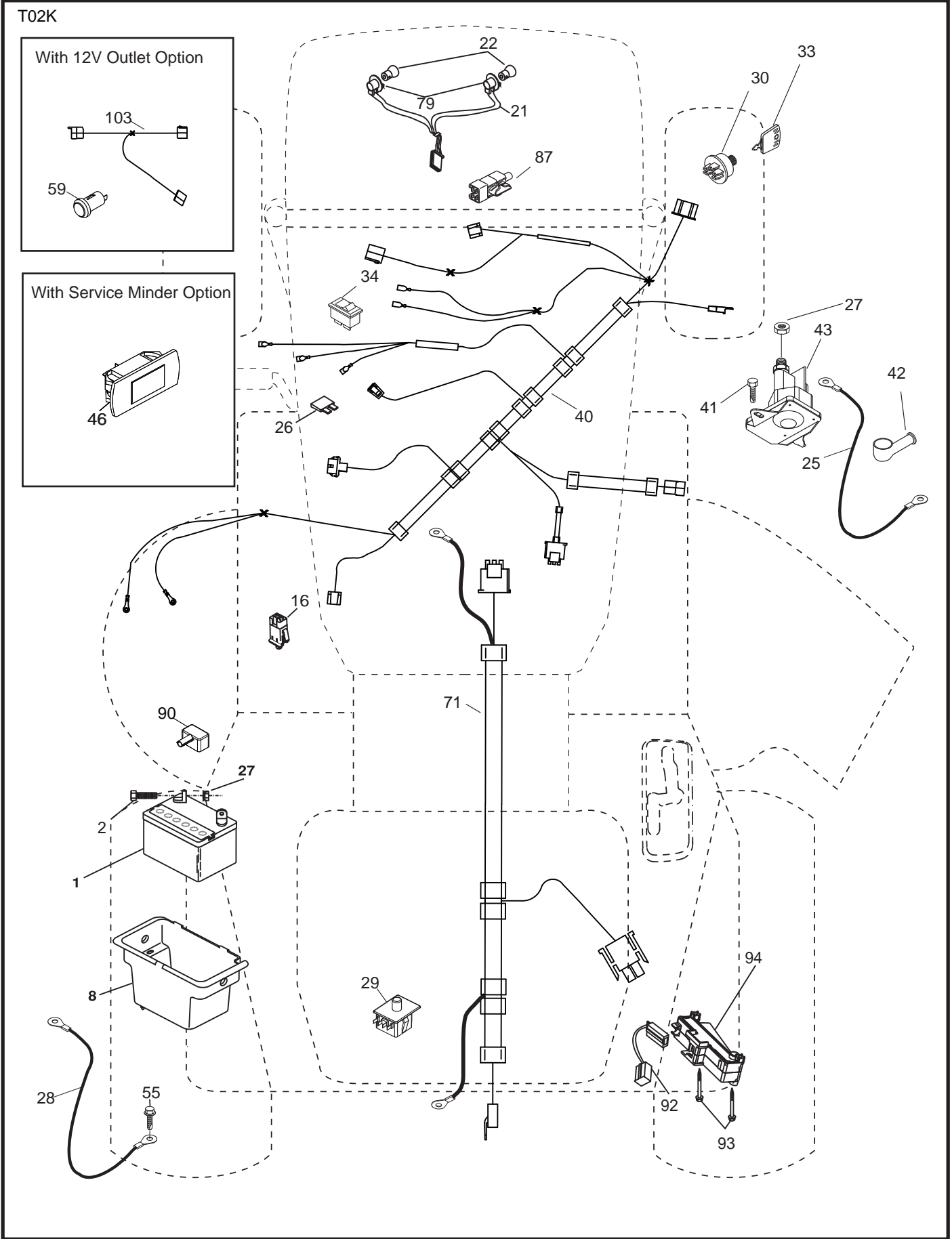
DASH HARNESS CONNECTOR (MATING SIDE)

WIRING INSULATED CLIPS  
NOTE: IF WIRING INSULATED CLIPS WERE REMOVED FOR SERVICING OF UNIT, THEY SHOULD BE RE-INSTALLED TO PROPERLY SECURE YOUR WIRING.

● NON-REMOVABLE CONNECTIONS

○ REMOVABLE CONNECTIONS

**TRACTOR - - MODEL NO. M16538H (96041011700), PRODUCT NO. 960 41 01-17  
ELECTRICAL**

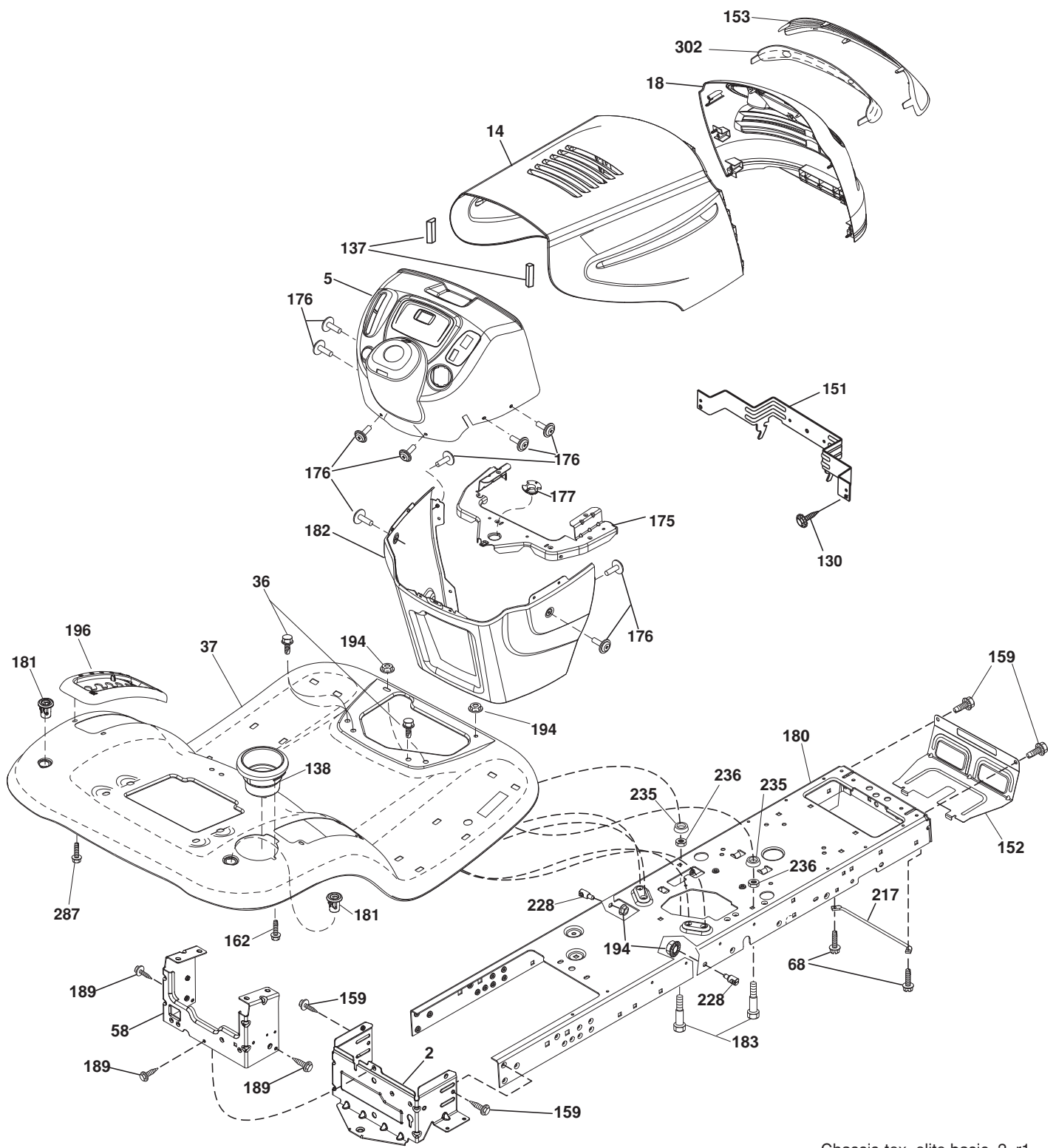


**TRACTOR - - MODEL NO. M16538H (96041011700), PRODUCT NO. 960 41 01-17  
ELECTRICAL**

| <b>KEY NO.</b> | <b>PART NO.</b> | <b>DESCRIPTION</b>               |
|----------------|-----------------|----------------------------------|
| 1              | 532 16 34-65    | Battery                          |
| 2              | 874 76 04-12    | Bolt Hex Hd. 1/4-20 unc x 3/4    |
| 8              | 532 19 32-28    | Box Battery                      |
| 16             | 532 17 61-38    | Switch Interlock Push-In         |
| 21             | 532 18 37-59    | Harness Socket Light w/4152J     |
| 22             | 532 00 41-52    | Bulb Light                       |
| 25             | 532 41 28-94    | Cable Starter                    |
| 26             | 532 17 51-58    | Fuse                             |
| 27             | 873 51 04-00    | Nut Keps Hex 1/4-20 unc          |
| 28             | 532 19 88-85    | Cable, Ground                    |
| 29             | 532 19 27-49    | Switch, Seat                     |
| 30             | 532 19 33-50    | Switch, Ign.                     |
| 33             | 532 41 19-33    | Key/Chain                        |
| 34             | 532 11 07-12    | Switch Light/Reset               |
| 40             | 532 40 10-98    | Harness Ign. Dash                |
| 41             | 817 72 04-08    | Screw Thd. Cut 1/4-20 x 1/2      |
| 42             | 532 13 15-63    | Cover, Terminal                  |
| 43             | 532 19 25-07    | Solenoid                         |
| 55             | 817 06 05-12    | Screw Thdrol. 5/16-18 x 3/4 TYTT |
| 71             | 532 40 04-49    | Harness Ign.                     |
| 79             | 532 17 52-42    | Bulbholder Asm. Incandescent     |
| 87             | 532 19 78-02    | Switch Interlock Clutch          |
| 90             | 532 40 07-25    | Cover Terminal Battery           |
| 92             | 532 19 66-15    | Harness Pigtail                  |
| 93             | 532 19 25-40    | Screw Plastite 10-14 x 2.0       |
| 94             | 532 19 18-34    | Module Reverse ROS               |

**NOTE:** All component dimensions given in U.S. inches  
1 inch = 25.4 mm

**TRACTOR - - MODEL NO. M16538H (96041011700), PRODUCT NO. 960 41 01-17  
CHASSIS**



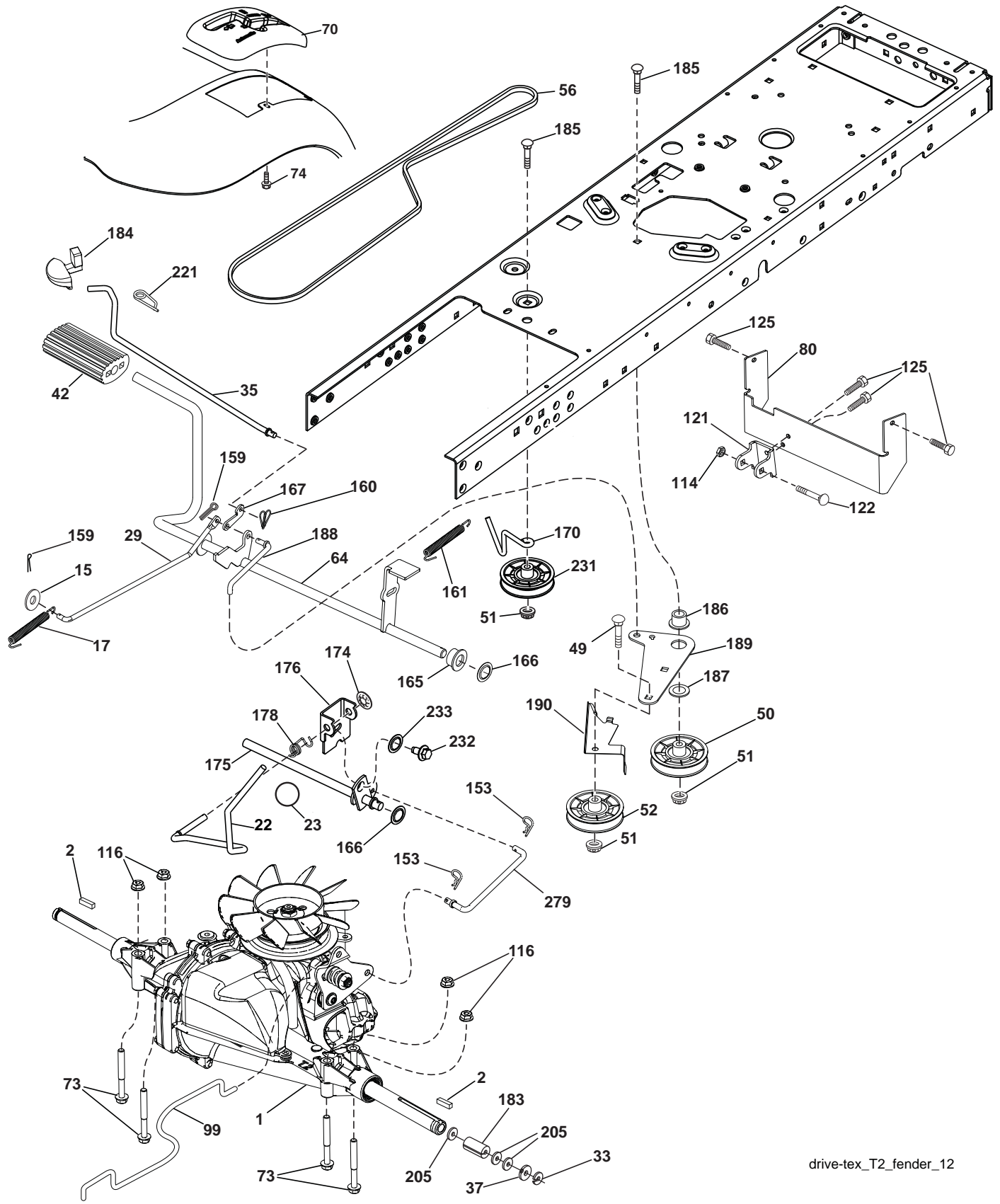
Chassis-tex\_elite basic\_2\_r1

**TRACTOR - - MODEL NO. M16538H (96041011700), PRODUCT NO. 960 41 01-17  
CHASSIS**

| <b>KEY NO.</b> | <b>PART NO.</b> | <b>DESCRIPTION</b>                  |
|----------------|-----------------|-------------------------------------|
| 2              | 532 41 22-82    | Drawbar, Lower 2 Pc.                |
| 5              | 532 41 17-64    | Dash                                |
| 14             | 532 18 65-80    | Hood                                |
| 18             | 532 18 38-26    | Grille                              |
| 36             | 817 06 05-12    | Screw 5/16-18 x 3/4                 |
| 37             | 532 42 09-86    | Fender                              |
| 58             | 532 41 22-80    | Drawbar, Upper 2 Pc.                |
| 68             | 817 49 05-08    | Screw Thdrol. 5/16-18 x 1/2         |
| 130            | 532 41 63-58    | Screw #10 x 0.750                   |
| 137            | 532 18 49-21    | Bumper Hood                         |
| 138            | 532 40 97-30    | Cupholder                           |
| 151            | 532 40 78-07    | Bracket Pivot                       |
| 152            | 532 19 43-29    | Shield Browning/Debris              |
| 153            | 532 18 98-37    | Lens Grille                         |
| 159            | 817 00 06-12    | Screw Hex Wsh. Thdrol. 3/8-16 x 3/4 |
| 162            | 532 14 24-32    | Screw Hex Wsh. Hi-Lo 1/4 x 1/2      |
| 175            | 532 19 32-43    | Crossmember                         |
| 176            | 532 40 07-76    | Screw 10-24 x 5/8 Wshd. Qdrx.       |
| 177            | 532 19 52-28    | Bushing Steering                    |
| 180            | 532 19 42-60    | Chassis                             |
| 181            | 532 40 47-96    | Bushing Mtg. Fender Crgo.           |
| 182            | 532 19 30-57    | Dash Lower                          |
| 183            | 874 78 05-20    | Bolt Fin. Hex 5/16-18 x 1-1/4       |
| 189            | 817 00 05-12    | Screw 5/16-18 x 3/4                 |
| 194            | 873 90 05-00    | Nut Lock Hex Flange 5/16-18         |
| 196            | 532 41 45-81    | Console Asm. Deck Lift              |
| 217            | 532 40 91-67    | Rod Pivot Chassis                   |
| 228            | 532 19 51-61    | Stud Fastener                       |
| 235            | 532 40 61-29    | Spacer Fender                       |
| 236            | 873 93 05-00    | Nut center Lock 5/16-18             |
| 287            | 817 60 04-06    | Screw 1/4-20 x 3/8                  |
| 302            | 532 18 38-23    | Insert Lens Reflective              |

**NOTE:** All component dimensions given in U.S. inches  
1 inch = 25.4 mm

TRACTOR - - MODEL NO. M16538H (96041011700), PRODUCT NO. 960 41 01-17  
DRIVE



drive-tex\_T2\_fender\_12

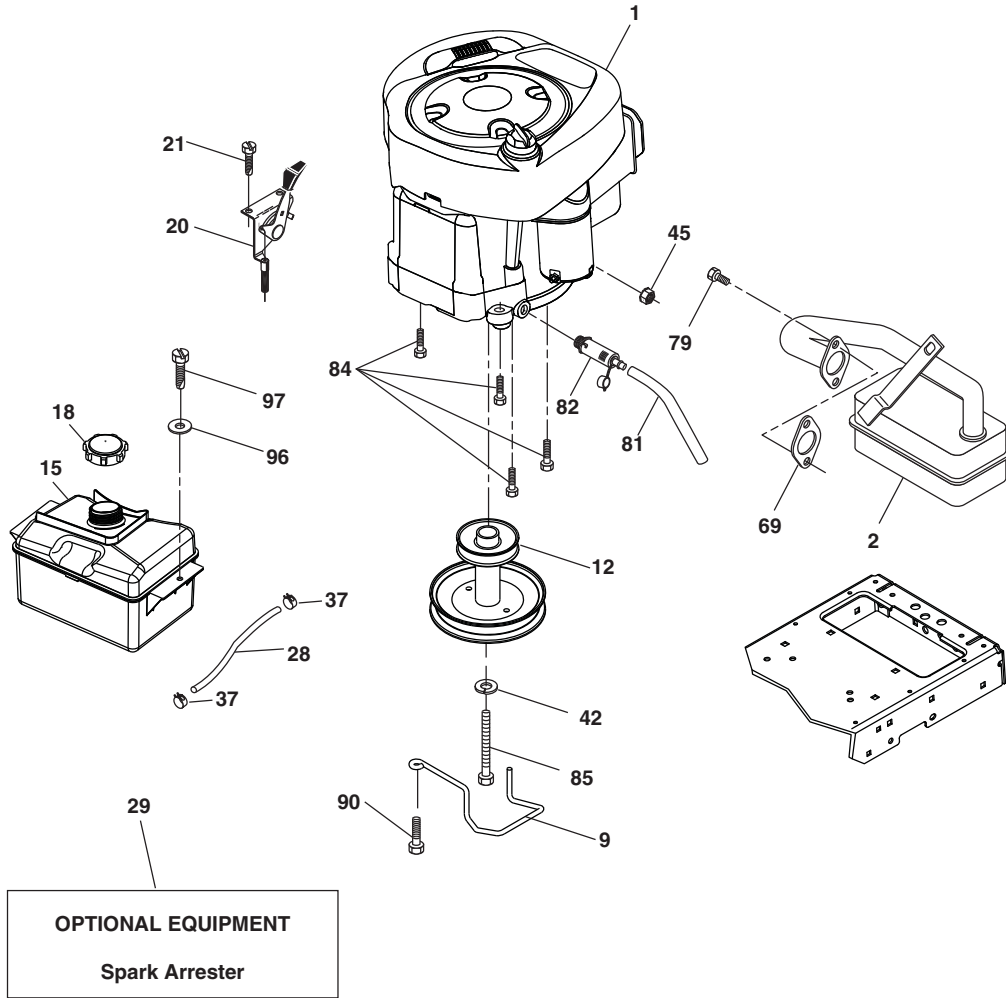


**TRACTOR - - MODEL NO. M16538H (96041011700), PRODUCT NO. 960 41 01-17 DRIVE**

| KEY NO. | PART NO.     | DESCRIPTION   | KEY NO. | PART NO.     | DESCRIPTION                   |
|---------|--------------|---|---------|--------------|-------------------------------|
| 1       | ----         | Transaxle, Hydro T2-AABC-1X1A-1GX1 (Internal Parts Not Available) | 159     | 876 02 04-12 | Pin Cotter 1/8 x 3/4          |
| 2       | 532 12 35-83 | Key   | 160     | 532 16 94-84 | Retainer Clip                 |
| 15      | 819 13 13-16 | Washer 13/32 x 13/16 x 16 Ga.                                     | 161     | 532 10 57-09 | Spring, Return, Clutch        |
| 17      | 532 19 72-96 | Spring, Brake   | 165     | 532 19 62-12 | Bushing                       |
| 22      | 532 19 76-60 | Rod Shift   | 166     | 532 19 72-90 | Nut Push .625                 |
| 23      | 532 17 16-74 | Knob  | 167     | 532 40 52-57 | Latch Brake Parking           |
| 29      | 532 40 83-91 | Rod, Brake  | 170     | 532 41 34-30 | Keeper Belt Centerspan        |
| 33      | 812 00 00-01 | Ring E  | 174     | 532 19 72-89 | Nut Push                      |
| 35      | 532 19 77-22 | Rod, Brake, Park  | 175     | 532 40 85-39 | Shaft Asm                     |
| 37      | 532 12 17-49 | Washer 25/32 x 1-1/4 x 16 Ga.                                     | 176     | 532 19 62-14 | Asm Clevis Rod Shift          |
| 42      | 532 12 48-72 | Cover, Foot Pedal   | 178     | 532 19 74-56 | Spring Shift                  |
| 49      | 872 11 06-14 | Bolt  | 183     | 532 15 69-72 | Spacer Axle                   |
| 50      | 532 19 43-27 | Pulley Idler Flat   | 184     | 532 41 12-89 | Handle Parking Brake          |
| 51      | 873 90 06-00 | Lock Nut 3/8-16   | 185     | 872 11 06-22 | Bolt                          |
| 52      | 532 19 43-26 | Idler V-Groove 910" Offset  | 186     | 532 19 43-21 | Spacer Retainer               |
| 56      | 532 12 59-07 | V-Belt, Drive   | 187     | 819 13 32-10 | Washer                        |
| 64      | 532 19 62-00 | Shaft Asm. Pedal Brake Control                                    | 188     | 532 19 43-23 | Link Clutch Ground Drive      |
| 70      | 532 41 13-29 | Console Shift   | 189     | 532 19 43-17 | Bellcrank Ground Drive        |
| 73      | 874 49 05-44 | Bolt Hex Flghd 5/16-18 Gr. 5                                      | 190     | 532 19 43-18 | Keeper Bellcrank Ground Drive |
| 74      | 532 14 24-32 | Screw Hex Wsh Hi-Lo 1/4 x 1/2 unc                                 | 205     | 532 12 17-48 | Washer 25/32 x 1-5/8 x 16 Ga. |
| 80      | 532 40 83-93 | Strap Torque  | 221     | 532 40 31-87 | Retainer Spring Clip Handle   |
| 99      | 532 40 84-18 | Rod Asm. Bypass   | 231     | 532 40 72-87 | Idler V-Groove 1.688 Offset   |
| 114     | 873 80 05-00 | Nut Lock Hex w/INS 5/16-1 unc                                     | 232     | 874 78 07-16 | Bolt Fin Hex 7/16-14 x 1      |
| 116     | 873 90 05-00 | Nut Lock Hex Flange 5/16-18                                       | 233     | 532 40 52-96 | Washer Serrated               |
| 121     | 532 17 56-11 | Bracket Strap Torque  | 279     | 532 40 85-38 | Link Shift                    |
| 122     | 872 01 05-20 | Bolt 5/16-18 x 2.50   |         |              |                               |
| 125     | 817 00 05-12 | Screw 5/16-18 x 3/4   |         |              |                               |
| 153     | 532 12 47-88 | Retainer Spring 1"  |         |              |                               |

**NOTE:** All component dimensions given in U.S. inches  
1 inch = 25.4 mm

**TRACTOR - - MODEL NO. M16538H (96041011700), PRODUCT NO. 960 41 01-17  
ENGINE**



**OPTIONAL EQUIPMENT**  
**Spark Arrester**

engine-tex\_BS\_12

| KEY NO. | PART NO.     | DESCRIPTION   | KEY NO. | PART NO.     | DESCRIPTION                       |
|---------|--------------|---|---------|--------------|-----------------------------------|
| 1       | -----        | Engine B&S Model No. 31A707 (Order from Engine Mfgr.) | 45      | 873 51 04-00 | Nut Keps Hex 1/4-20 unc           |
| 2       | 532 13 73-52 | Muffler   | 69      | 532 16 52-91 | Gasket                            |
| 9       | 532 19 43-19 | Keeper Belt Engine                                    | 79      | 532 19 23-34 | Screw Socket Hd. 5/16-18 x .75    |
| 12      | 532 40 19-85 | Pulley Engine   | 81      | 532 14 84-56 | Tube Drain Oil Easy               |
| 15      | 532 40 75-45 | Tank Fuel   | 82      | 532 18 16-54 | Plug Drain Oil                    |
| 18      | 532 19 77-25 | Cap Asm.  | 84      | 817 06 06-20 | Screw 3/8-16 x 1-1/4              |
| 20      | 532 41 17-24 | Control Throttle/Choke                                | 85      | 532 17 39-37 | Bolt Hex 7/16-20 x 4 x Gr. 5-1.5  |
| 21      | 532 41 63-58 | Screw 10 x 0.750                                      | 90      | 817 00 06-16 | Screw 3/8-16 x 1.0                |
| 28      | 532 13 70-40 | Fuel Line   | 96      | 819 09 14-16 | Washer 9/32 x 7/8 x 16            |
| 29      | 532 13 71-80 | Spark Arrester Kit                                    | 97      | 817 67 04-12 | Screw Hex Wsh. Thdrol. 1/4-20x3/4 |
| 37      | 532 12 34-87 | Clamp Hose  |         |              |                                   |
| 42      | 810 04 07-00 | Washer Lock 7/16                                      |         |              |                                   |

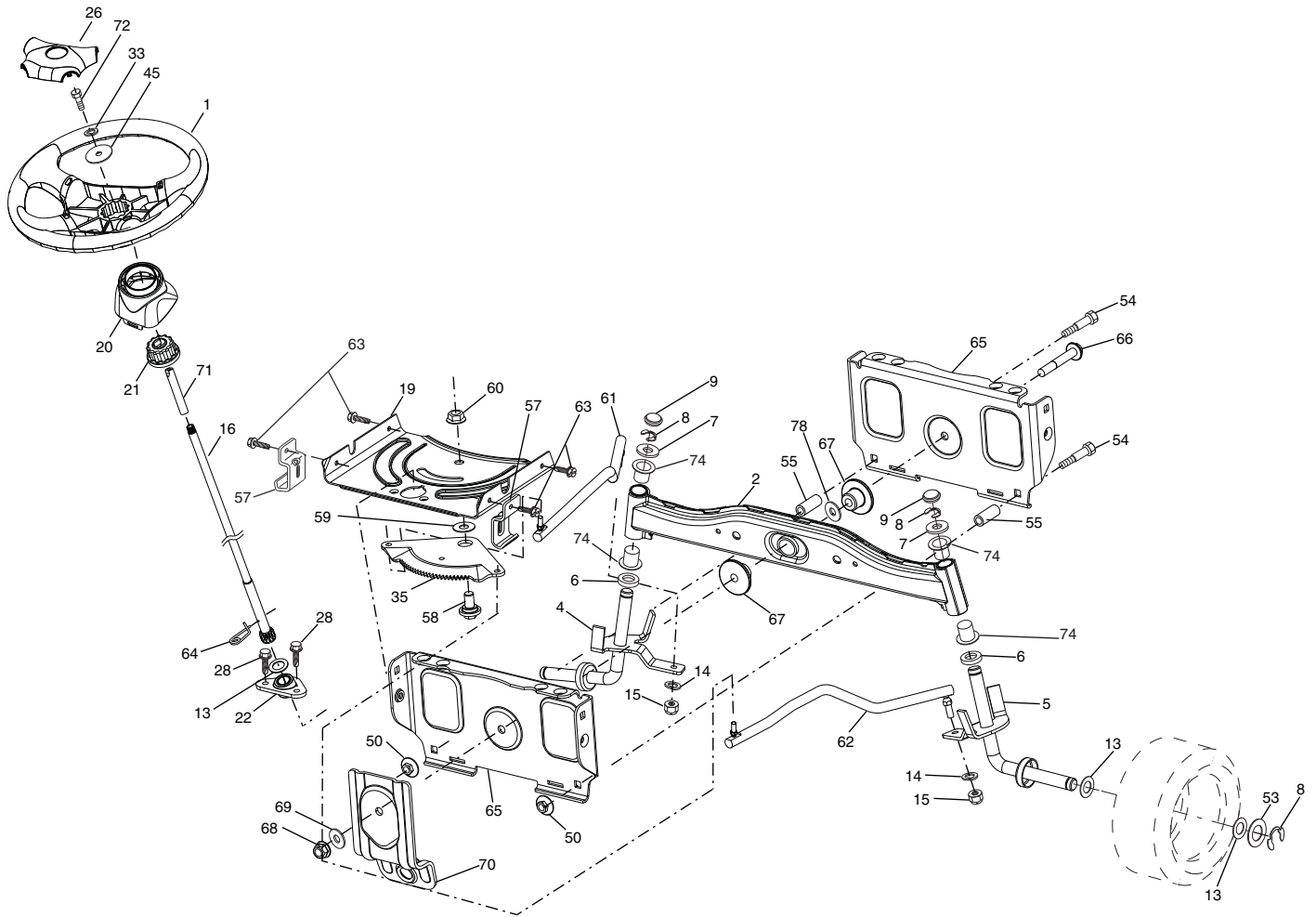
**NOTE:** All component dimensions given in U.S. inches  
1 inch = 25.4 mm

**Engine Power Rating Information**

The gross power rating for individual gas engine models is labeled in accordance with SAE (Society of Automotive Engineers) code J1940 (Small Engine Power & Torque Rating Procedure), and rating performance has been obtained and corrected in accordance with SAE J1995 (Revision 2002-05). Torque values are derived at 3060 RPM; horsepower values are derived at 3600 RPM. Actual gross engine power will be lower and is affected by, among other things, ambient operating conditions and engine-to-engine variability. Given both the wide array of products on which engines are placed and the variety of environmental issues applicable to operating the equipment, the gas engine will not develop the rated gross power when used in a given piece of power equipment (actual "on-site" or net power). This difference is due to a variety of factors including, but not limited to, accessories (air cleaner, exhaust, charging, cooling, carburetor, fuel pump, etc.), application limitations, ambient operating conditions (temperature, humidity, altitude), and engine-to-engine variability. Due to manufacturing and capacity limitations, Briggs & Stratton may substitute an engine of higher rated power for this Series engine.

# TRACTOR - - MODEL NO. M16538H (96041011700), PRODUCT NO. 960 41 01-17

## STEERING ASSEMBLY



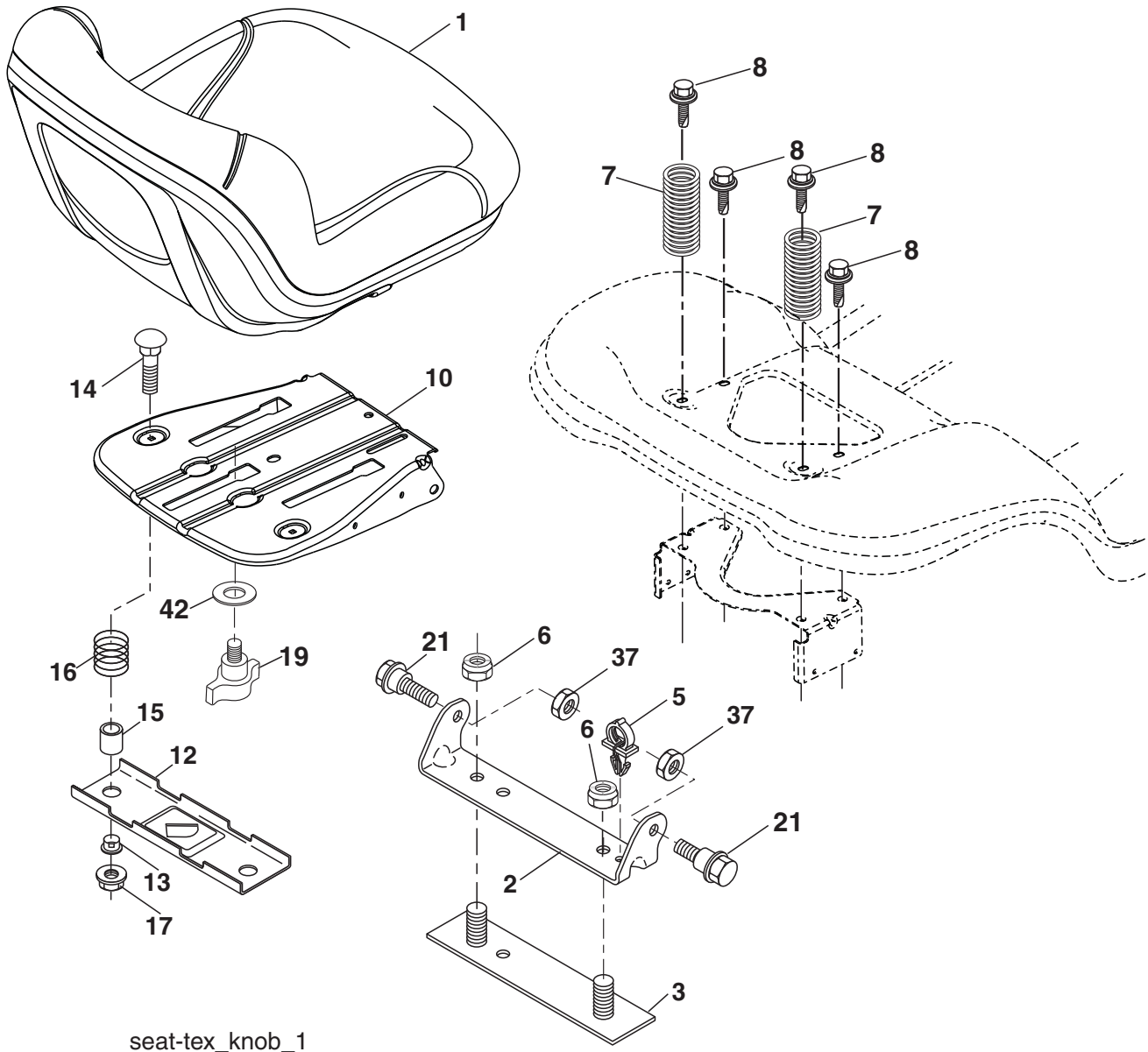
steering-tex\_11-1t\_r1

| KEY PART NO. | PART NO.     | DESCRIPTION                      |
|--------------|--------------|----------------------------------|
| 1            | 532 42 45-51 | Wheel, Steering                  |
| 2            | 532 41 81-68 | Axle Asm., Front                 |
| 4            | 532 40 30-87 | Spindle Asm., LH                 |
| 5            | 532 40 30-88 | Spindle Asm., RH                 |
| 6            | 532 12 49-31 | Bearing, Race Thrust Harden      |
| 7            | 532 12 17-48 | Washer 25/32 x 1-5/8 x 16 Ga.    |
| 8            | 812 00 00-29 | Ring, Clip #T5304-75             |
| 9            | 532 12 12-32 | Cap, Spindle                     |
| 13           | 532 12 17-49 | Washer 25/32 x 1-1/4 x 16 Ga.    |
| 14           | 810 04 06-00 | Washer, Lock Hvy. Hlcl. Spr. 3/8 |
| 15           | 873 54 06-00 | Nut, Crown Lock 3/8-24 unf       |
| 16           | 532 19 60-74 | Shaft Steering                   |
| 19           | 532 19 47-29 | Plate Steering                   |
| 20           | 532 41 12-91 | Boot, Steering                   |
| 21           | 532 18 67-37 | Adapter, Wheel Steering          |
| 22           | 532 19 48-45 | Bushing, Strg. Blk.              |
| 26           | 532 42 45-53 | Insert, Wheel Steering           |
| 28           | 817 00 06-12 | Screw 3/8-16 x 3/4               |
| 33           | 810 04 05-00 | Washer Lock 5/16                 |
| 35           | 532 19 47-32 | Gear, Sector Plate               |
| 45           | 819 11 38-12 | Washer 11/32 x 2-3/8 x 12 Ga.    |
| 50           | 873 90 06-00 | Nut Lock Flg. 3/8-16 unc         |
| 53           | 532 18 89-67 | WasherHardened.793x1.637x.060    |

| KEY PART NO. | PART NO.     | DESCRIPTION                      |
|--------------|--------------|----------------------------------|
| 54           | 874 76 06-36 | Bolt Hex HS 3/8-16 unc x 2-1/4   |
| 55           | 532 41 47-36 | Spacer Brace Axle                |
| 57           | 532 40 74-65 | Bracket Upstop                   |
| 58           | 532 19 47-47 | Bolt Shoulder Sector Pivot CFM   |
| 59           | 532 19 47-48 | Washer Thrust Sector Steering    |
| 60           | 873 97 10-00 | Nut Flange Lock 5/8-11           |
| 61           | 532 19 47-40 | Draglink LH                      |
| 62           | 532 19 47-41 | Draglink, RH                     |
| 63           | 817 00 05-12 | Screw 5/16-18 x 3/4              |
| 64           | 532 19 98-49 | Retainer Clip Spring Steering    |
| 65           | 532 19 47-34 | Brace Axle Front                 |
| 66           | 871 02 07-48 | Bolt Hex Fghd. 7/16-14 x 3 Serr. |
| 67           | 532 19 47-37 | Bushing PM Front Axle            |
| 68           | 873 90 07-00 | Nut Lock Flange 7/16-14 Gr. 5    |
| 69           | 532 19 91-62 | Washer 1.5 x .505 x .118         |
| 70           | 532 19 61-97 | Bracket Deck Susp. Front         |
| 71           | 532 19 60-75 | Shaft Ext. Steering              |
| 72           | 874 78 05-72 | Bolt 5/16-18 x 4.5 Gr. 5         |
| 74           | 532 12 49-37 | Bearing                          |
| 78           | 532 05 70-79 | Washer Thrust                    |

**NOTE:** All component dimensions given in U.S. inches  
1 inch = 25.4 mm

**TRACTOR - - MODEL NO. M16538H (96041011700), PRODUCT NO. 960 41 01-17  
SEAT ASSEMBLY**



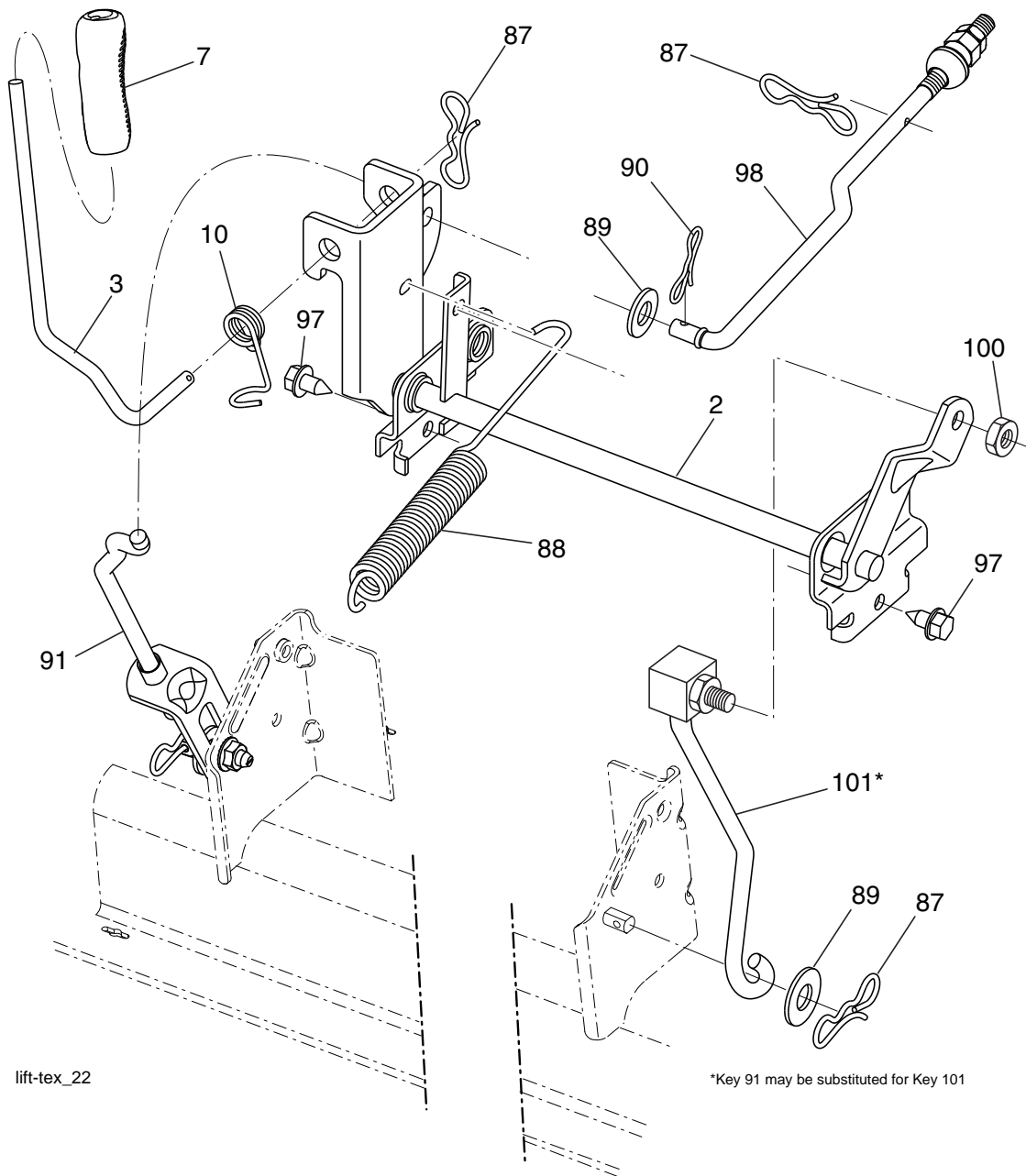
seat-tex\_knob\_1

| KEY NO. | PART NO.     | DESCRIPTION                   |
|---------|--------------|-------------------------------|
| 1       | 532 41 14-05 | Seat                          |
| 2       | 532 18 01-66 | Bracket Pivot Fender          |
| 3       | 532 14 06-75 | Strap, Asm Fender             |
| 5       | 532 14 50-06 | Clip Push In                  |
| 6       | 873 80 06-00 | Nut, Lock w/Ins. 3/8-16 unc   |
| 7       | 532 12 41-81 | Spring, Seat Cprsn            |
| 8       | 532 17 18-77 | Bolt 5/16-18 unc x 3/4 w/Sems |
| 10      | 532 19 91-80 | Pan, Seat                     |
| 12      | 532 19 93-70 | Bracket Mnt                   |
| 13      | 532 12 12-48 | Bushing Snap                  |
| 14      | 872 05 04-12 | Bolt RdHd Sht NK 1/4-20       |

| KEY NO. | PART NO.     | DESCRIPTION                |
|---------|--------------|----------------------------|
| 15      | 532 13 43-00 | Spacer Split               |
| 16      | 532 12 37-40 | Spring CPRSN Plate         |
| 17      | 532 12 39-76 | Nut Lock 1/4 Lge Flg Gr. 5 |
| 19      | 532 19 93-72 | Knob Seat                  |
| 21      | 532 17 18-52 | Bolt, Shoulder 5/16-18     |
| 37      | 873 80 05-00 | Nut, Lock 5/16-18 unc      |
| 42      | 532 19 93-71 | Washer                     |

**NOTE:** All component dimensions given in U.S. inches  
1 inch = 25.4 mm

**TRACTOR - - MODEL NO. M16538H (96041011700), PRODUCT NO. 960 41 01-17  
MOWER LIFT**



lift-tex\_22

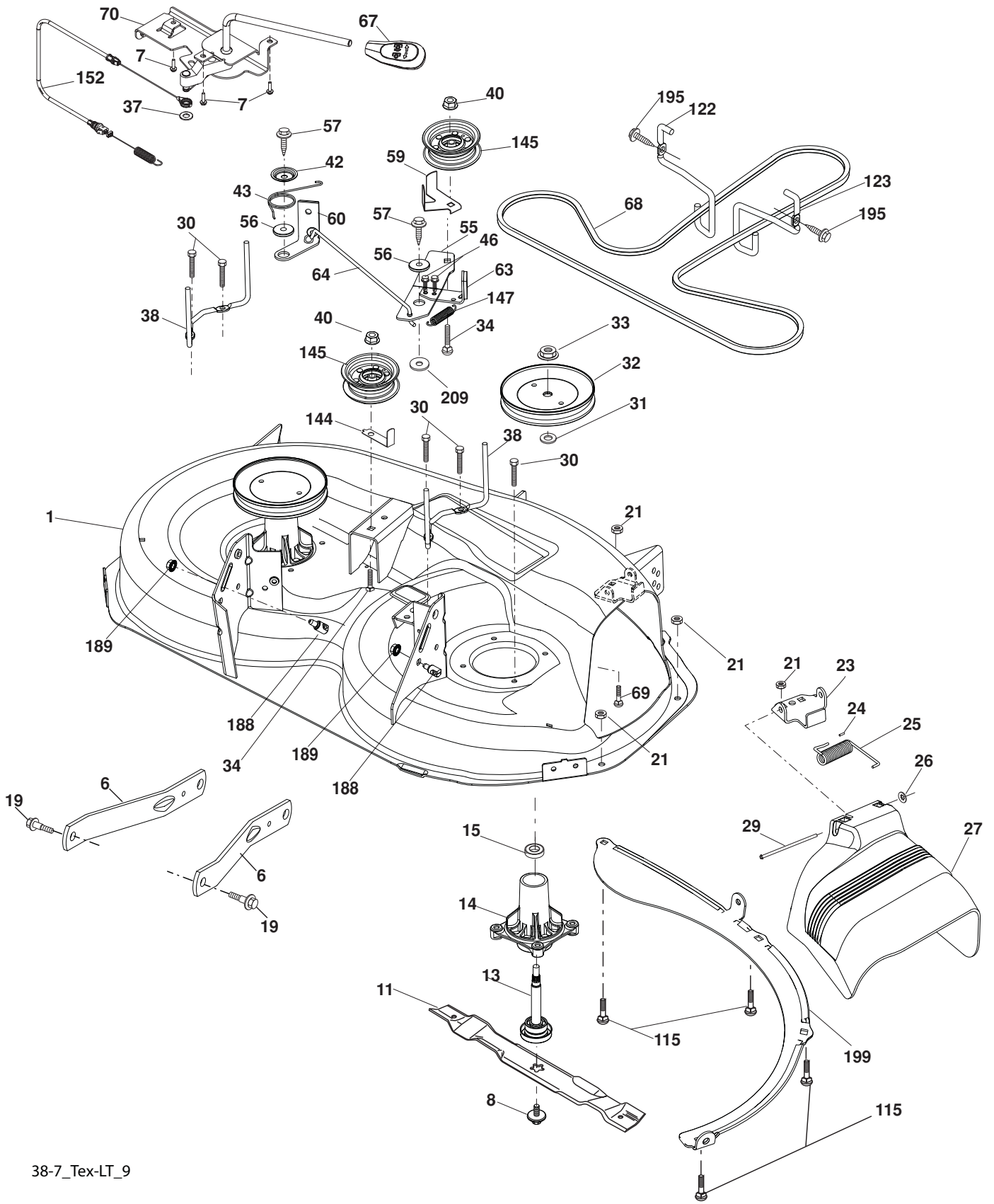
\*Key 91 may be substituted for Key 101

| KEY NO. | PART NO.     | DESCRIPTION                  |
|---------|--------------|------------------------------|
| 2       | 532 42 20-27 | Shaft Asm., Lift             |
| 3       | 532 19 52-31 | Lever Asm., Lift RH          |
| 7       | 532 41 17-42 | Grip, Lever                  |
| 10      | 532 19 63-14 | Spring Torsion               |
| 87      | 532 19 42-09 | Pin Cotter 7/16 Bow Tie Lock |
| 88      | 532 41 07-10 | Spring Lift Assist           |
| 89      | 819 17 19-12 | Washer                       |
| 90      | 532 19 42-08 | Pin Cotter 5/16 Bow Tie Lock |

| KEY NO. | PART NO.     | DESCRIPTION                 |
|---------|--------------|-----------------------------|
| 91      | 532 19 51-81 | Link Lift Susp. Mower Rear  |
| 97      | 817 00 06-12 | Screw 3/8-16 x 3/4          |
| 98      | 532 19 52-70 | Link Lift Susp. Front Mower |
| 100     | 873 93 06-00 | Nut Centerlock 3/8-16 unc   |
| 101     | 532 40 70-03 | Link Asm Lift               |

**NOTE:** All component dimensions given in U.S. inches  
1 inch = 25.4 mm

TRACTOR - - MODEL NO. M16538H (96041011700), PRODUCT NO. 960 41 01-17  
MOWER DECK



38-7\_Tex-LT\_9



**TRACTOR - - MODEL NO. M16538H (96041011700), PRODUCT NO. 960 41 01-17  
MOWER DECK**

| <b>KEY NO.</b> | <b>PART NO.</b> | <b>DESCRIPTION</b>                  | <b>KEY NO.</b> | <b>PART NO.</b> | <b>DESCRIPTION</b>  |
|----------------|-----------------|-------------------------------------|----------------|-----------------|---|
| 1              | 532 19 42-51    | Mower Housing                       | 57             | 817 00 06-16    | Screw 3/8-16 x 1  |
| 6              | 532 19 51-86    | Arm Suspension                      | 59             | 532 14 10-43    | Guard, Tuv. Idler   |
| 7              | 532 41 63-58    | Screw #10 x BOS Thread              | 60             | 532 19 94-71    | Arm Brake Mower   |
| 8              | 532 19 30-03    | Bolt/Washer Asm. 7/16-20 unf        | 63             | 532 19 94-70    | Arm Brake Mower   |
| 11             | 532 13 84-97    | Blade Mower 38" Hi Perf             | 64             | 532 19 97-90    | Link Brake  |
| 13             | 532 19 28-72    | Shaft Assembly, Mandrel             | 67             | 532 40 97-92    | Handle Clutch Cable   |
| 14             | 532 18 72-81    | Housing, Mandrel                    | 68             | 532 40 83-81    | V-Belt  |
| 15             | 532 11 04-85    | Bearing, Ball, Mandrel              | 69             | 872 14 05-05    | Bolt  |
| 19             | 532 19 65-39    | Bolt, Shoulder                      | 70             | 532 19 83-32    | Clutch Asm. Manual  |
| 21             | 873 68 05-00    | Nut, Crownlock 5/16-18 unc          | 115            | 872 11 05-05    | Bolt Carr. 5/16-18 x 5/8  |
| 23             | 532 19 25-57    | Bracket, Deflector                  | 122            | 532 19 72-58    | Keeper Belt Engine LH   |
| 24             | 532 10 53-04    | Cap, Sleeve                         | 123            | 532 19 72-59    | Keeper Belt Engine RH   |
| 25             | 532 19 70-26    | Spring, Torsion, Deflector          | 144            | 532 19 34-14    | Keeper Belt   |
| 26             | 532 11 04-52    | Nut, Push                           | 145            | 532 19 31-97    | Pulley, Idler, Flat   |
| 27             | 532 40 14-72    | Shield, Deflector                   | 147            | 532 40 18-72    | Spring Return   |
| 29             | 532 13 14-91    | Rod, Hinge                          | 152            | 532 40 87-14    | Manual Clutch Cable   |
| 30             | 532 17 39-84    | Screw Thdrol. Rolling Wsh. Hd.      | 188            | 532 19 51-61    | Stud Fastener   |
| 31             | 532 18 76-90    | Washer, Spacer                      | 189            | 873 90 05-00    | Nut Lock Hex Flange   |
| 32             | 532 19 97-89    | Pulley, Mandrel                     | 195            | 817 00 06-12    | Screw 3/8-16 x 3/4  |
| 33             | 532 40 02-34    | Nut, Toplock, Flanged               | 199            | 532 40 00-95    | Baffle Vortex   |
| 34             | 872 11 06-12    | Bolt Carr. Sh. 3/8-16 x 1-1/2 Gr. 5 | 209            | 819 13 32-10    | Washer 13/32 x 2 x 10   |
| 37             | 819 13 13-16    | Washer                              | --             | 532 19 28-70    | Mandrel Assembly (Includes hous-<br>ing, shaft and shaft hardware only-<br>pulley not included) |
| 38             | 532 19 95-41    | Keeper Belt LH Mandrel              | --             | 532 42 28-91    | Replacement Mower, Complete   |
| 40             | 873 90 06-00    | Nut, Lock Flg. 3/8-16 unc           |                |                 |   |
| 42             | 532 19 84-10    | Spring Torsion Brake                |                |                 |   |
| 43             | 532 19 72-56    | Spring Torsion Retainer             |                |                 |   |
| 46             | 532 13 77-29    | Screw 1/4-20 x 5/8                  |                |                 |   |
| 55             | 532 19 72-49    | Arm, Idler                          |                |                 |   |
| 56             | 532 19 90-92    | Spacer, Retainer                    |                |                 |   |

**NOTE:** All component dimensions given in U.S. inches  
1 inch = 25.4 mm

