

REPAIR PARTS MANUAL
MODEL NO. MC195H42LT (96042011400)
Lawn Tractor



McCULLOCH

www.mcculloch.biz

HOW TO USE THIS MANUAL

This manual is designed to provide the customer with a means to identify the parts on his/her tractor when ordering repair parts. The illustrations may or may not represent the actual assemblies; therefore, it is not recommended to use this manual as a guide to assemble or disassemble the tractor. Some hardware and parts are drawn larger in order to more readily identify them.

Each tractor has its own model number.

The model number for your tractor can be found on the fender under the seat.

When ordering parts, always give the following information:

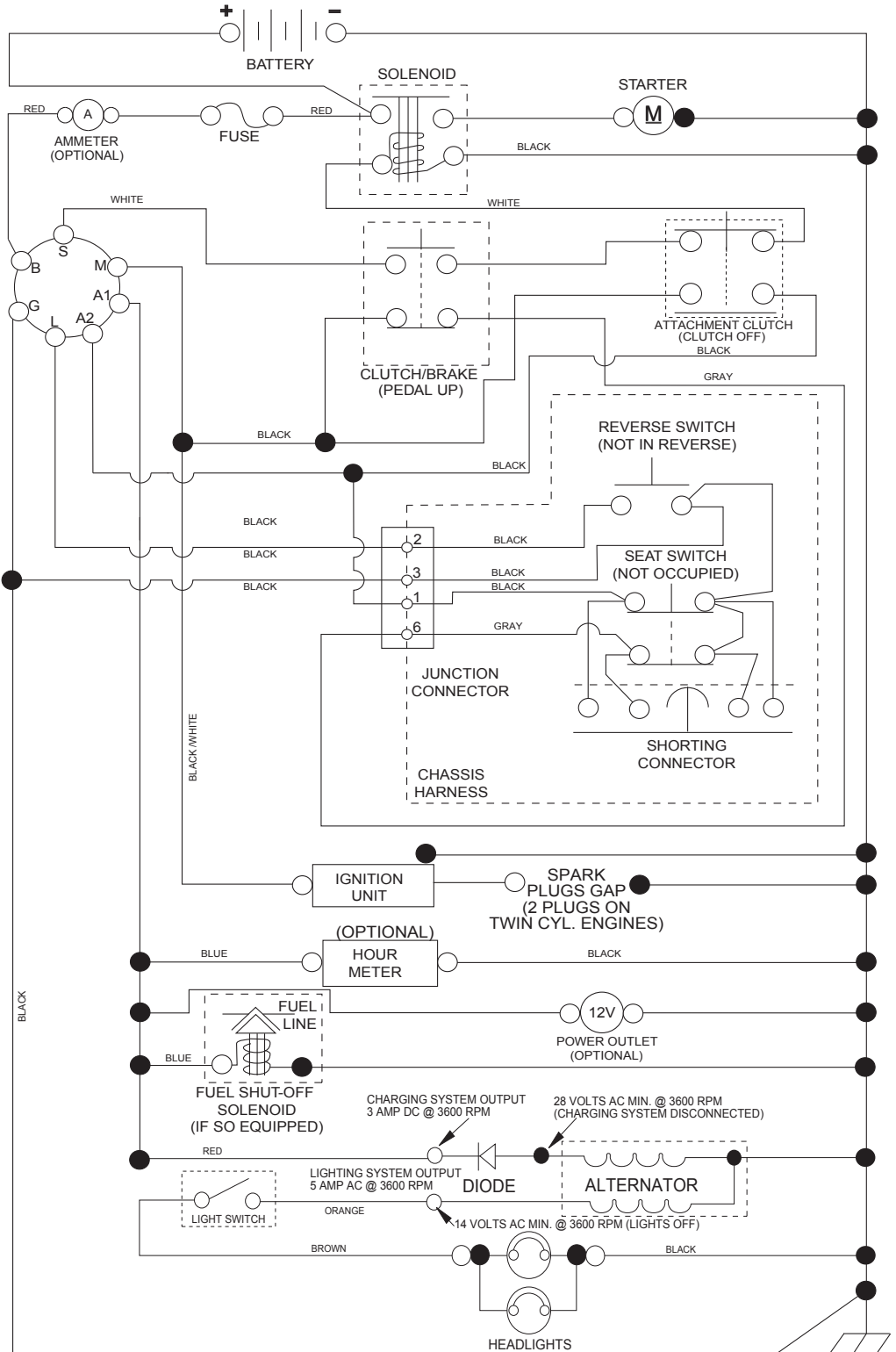
- Product - "Tractor"
- Model Number - "MC195H42LT 96042011400"
- Part Number
- Part Description

TABLE OF CONTENTS

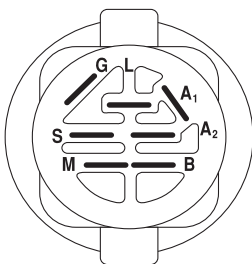
| | |
|-----------------|-------|
| SCHEMATIC | 3 |
| ELECTRICAL..... | 4-5 |
| CHASSIS | 6-7 |
| DRIVE..... | 8-9 |
| STEERING | 10-11 |
| ENGINE..... | 12-13 |
| SEAT | 14 |
| DECALS..... | 15 |
| MOWER DECK..... | 16-17 |
| MOWER LIFT..... | 18 |

TRACTOR -- MODEL NO. MC195H42LT (96042011400), PRODUCT NO. 960 42 01-14 SCHEMATIC

SCH11

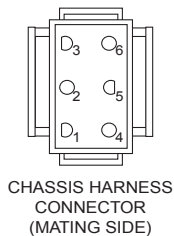


NOTE
YOUR TRACTOR IS EQUIPPED WITH A SPECIAL ALTERNATOR SYSTEM. THE LIGHTS ARE NOT CONNECTED TO THE BATTERY, BUT HAVE THEIR OWN ELECTRICAL SOURCE. BECAUSE OF THIS, THE BRIGHTNESS OF THE LIGHTS WILL CHANGE WITH ENGINE SPEED. AT IDLE THE LIGHTS WILL DIM. AS THE ENGINE IS SPEEDED UP, THE LIGHTS WILL BECOME THEIR BRIGHTEST.



IGNITION SWITCH

| POSITION | CIRCUIT "MAKE" |
|--------------|----------------|
| OFF | M+G+A1 |
| RUN/OVERRIDE | B+A1 |
| RUN | B+A1 L+A2 |
| START | B + S + A1 |

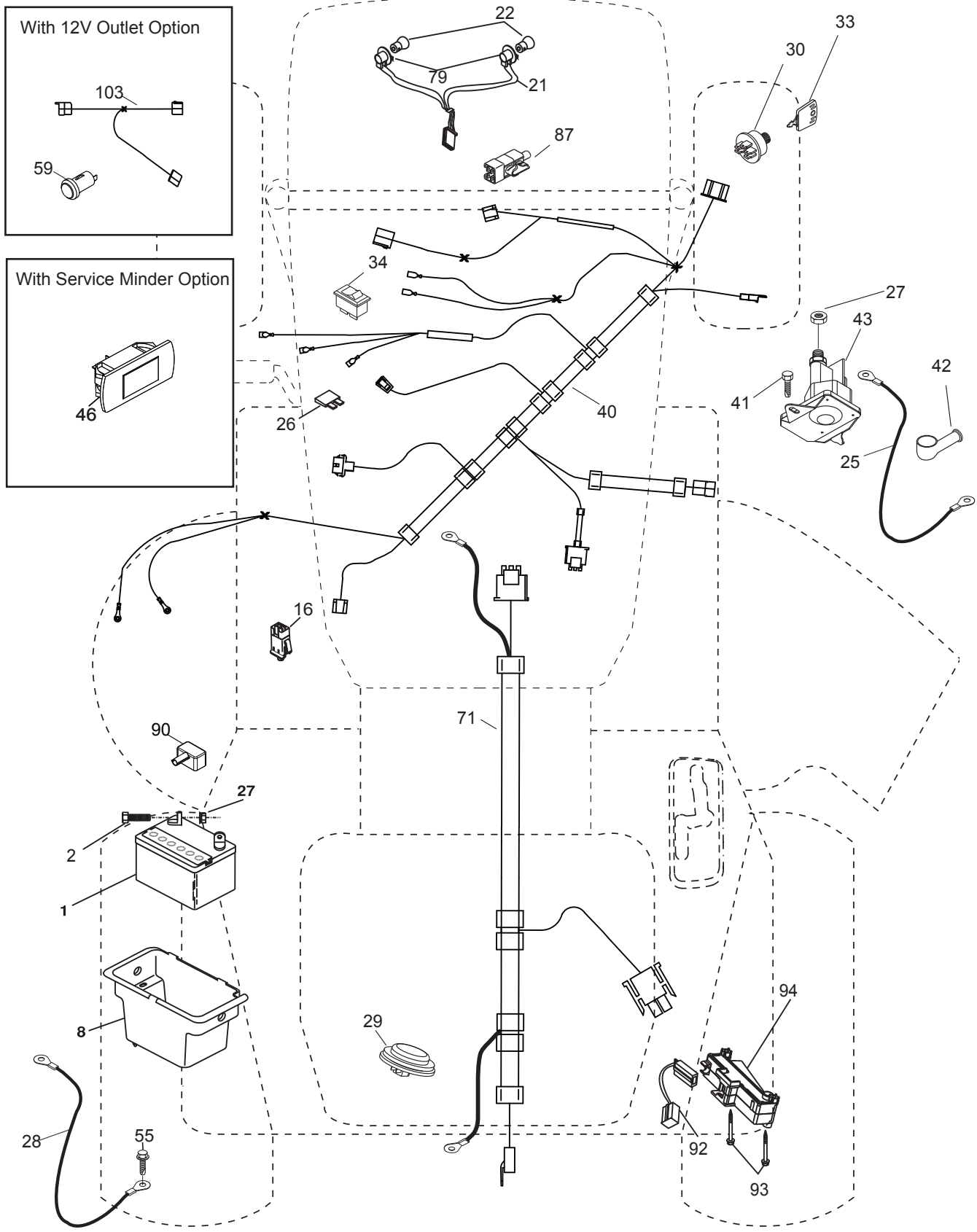
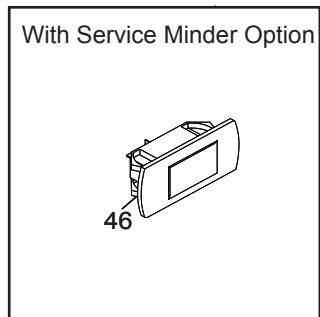
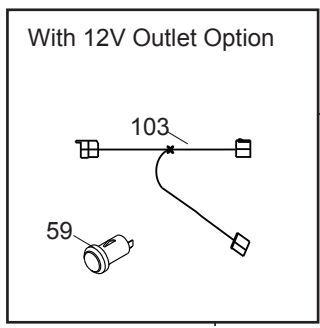


WIRING INSULATED CLIPS
NOTE: IF WIRING INSULATED CLIPS WERE REMOVED FOR SERVICING OF UNIT, THEY SHOULD BE RE-INSTALLED TO PROPERLY SECURE YOUR WIRING.

NON-REMOVABLE CONNECTIONS
REMOVABLE CONNECTIONS

**TRACTOR -- MODEL NO. MC195H42LT (96042011400), PRODUCT NO. 960 42 01-14
ELECTRICAL**

T02S

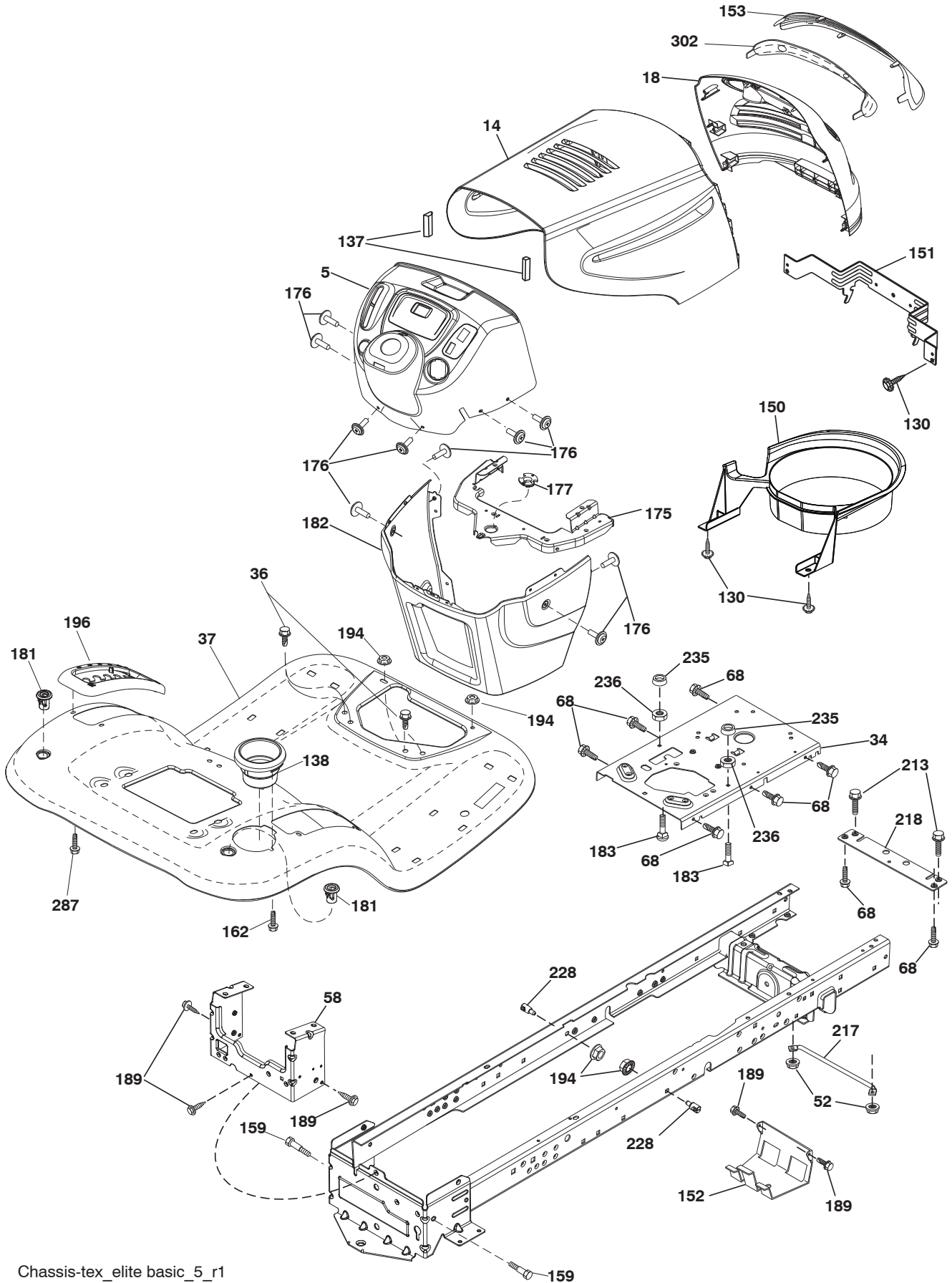


**TRACTOR -- MODEL NO. MC195H42LT (96042011400), PRODUCT NO. 960 42 01-14
ELECTRICAL**

| KEY NO. | PART NO. | DESCRIPTION |
|----------------|-----------------|------------------------------|
| 1 | 532 16 34-65 | Battery |
| 2 | 874 76 04-12 | Bolt Hex Hd 1/4-20 unc x 3/4 |
| 8 | 532 19 32-28 | Battery Box |
| 16 | 532 17 61-38 | Switch Interlock |
| 21 | 532 18 37-59 | Harness Socket Light |
| 22 | 532 00 41-52 | Bulb, Light #1156 |
| 25 | 532 41 28-94 | Cable Starter |
| 26 | 532 17 51-58 | Fuse |
| 27 | 873 51 04-00 | Nut Keps Hex 1/4-20 unc |
| 28 | 532 19 88-85 | Cable Ground |
| 29 | 532 40 15-45 | Switch Seat |
| 30 | 532 19 33-50 | Switch Ign |
| 33 | 532 41 19-33 | Key/Chain |
| 34 | 532 11 07-12 | Switch Light/Reset |
| 40 | 532 40 10-98 | Harness Ign. Dash |
| 41 | 817 72 04-08 | Screw Thd Cut 1/4-20 x 1/2 |
| 42 | 532 13 15-63 | Cover Terminal Red |
| 43 | 532 19 25-07 | Solenoid |
| 55 | 817 06 05-12 | Screw Thdrol 5/16-18 x 3/4 |
| 71 | 532 40 04-49 | Harness Chassis |
| 79 | 532 17 52-42 | Socket Asm. Bulb |
| 87 | 532 19 78-02 | Switch Interlock Clutch |
| 90 | 532 40 07-25 | Cover Terminal Battery |
| 92 | 532 19 66-15 | Harness Pigtail Console ROS |
| 93 | 532 19 25-40 | Screw Plastite 10-14 x 2.0 |
| 94 | 532 19 18-34 | Module Reverse ROS |

NOTE: All component dimensions given in U.S. inches
1 inch = 25.4 mm

**TRACTOR -- MODEL NO. MC195H42LT (96042011400), PRODUCT NO. 960 42 01-14
CHASSIS AND ENCLOSURES**

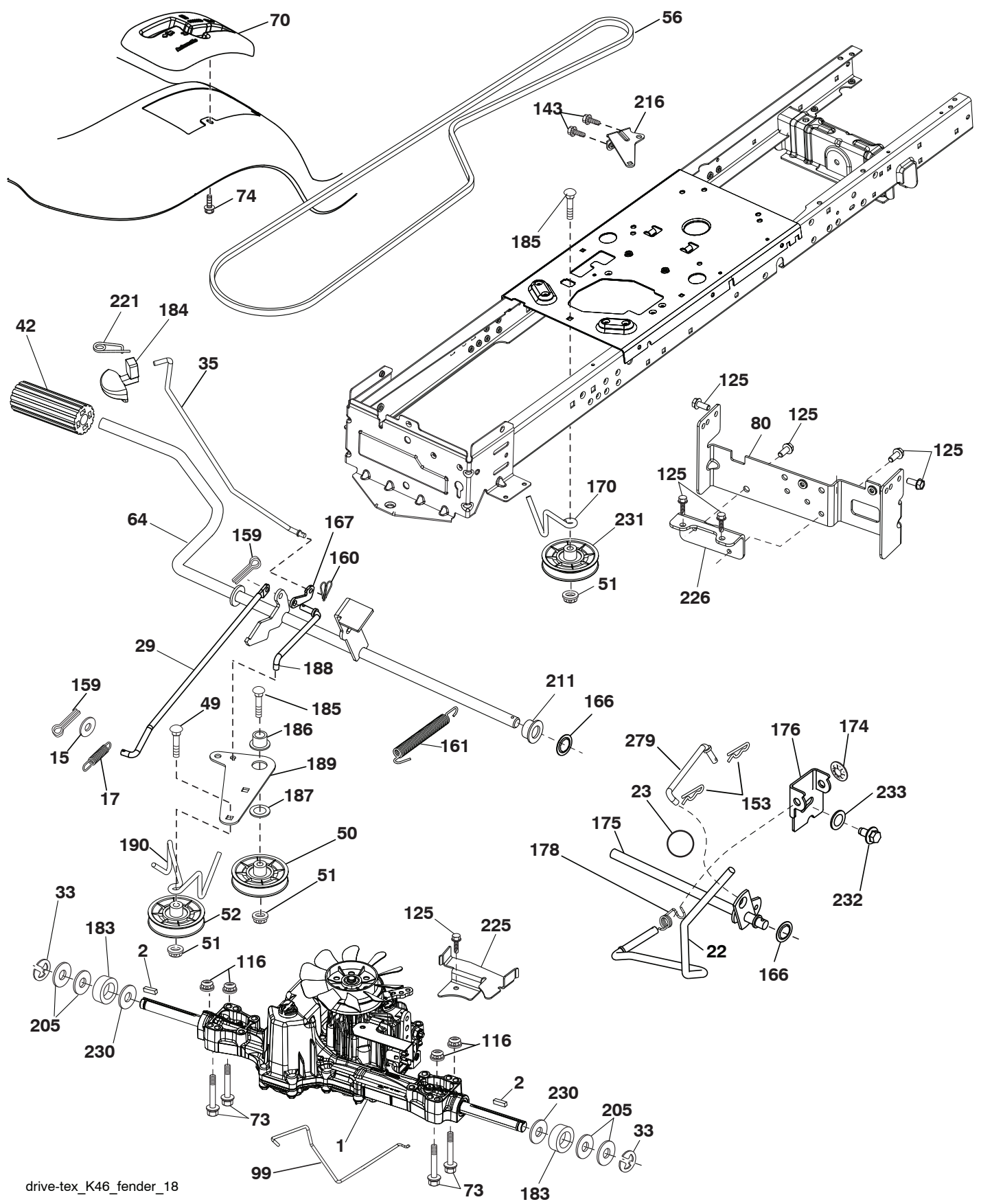


**TRACTOR -- MODEL NO. MC195H42LT (96042011400), PRODUCT NO. 960 42 01-14
CHASSIS AND ENCLOSURES**

| KEY NO. | PART NO. | DESCRIPTION |
|----------------|-----------------|----------------------------------|
| 5 | 532 41 17-64 | Dash |
| 14 | 532 18 65-80 | Hood |
| 18 | 532 42 67-92 | Grille |
| 34 | 532 19 61-25 | Plate Engine |
| 36 | 817 06 05-12 | Screw 5/16-18 x 3/4 |
| 37 | 532 42 09-86 | Fender |
| 52 | 873 68 05-00 | Nut Lock 5/16-18 |
| 58 | 532 41 22-80 | Drawbar Upper |
| 68 | 817 49 05-08 | Screw Thdrol 5/16-18 x 1/2 |
| 130 | 532 41 63-58 | Screw #10 x 0.750 |
| 137 | 532 18 49-21 | Bumper Hood |
| 138 | 532 40 97-30 | Cupholder |
| 150 | 532 18 44-61 | Duct Heat Hood |
| 151 | 532 40 78-07 | Bracket Pivot |
| 152 | 532 19 95-35 | Shield Browning |
| 153 | 532 18 98-37 | Lens Grille |
| 159 | 817 00 06-12 | Screw Hexwsh Thdrol 3/8-16 x 3/4 |
| 162 | 532 14 24-32 | Screw Hex Wsh Hi-Lo 1/4 x 1/2 |
| 175 | 532 19 32-43 | Crossmember |
| 176 | 532 40 07-76 | Screw 10-24 x 5/8 Wshd Qdrx |
| 177 | 532 19 52-28 | Bushing Steering |
| 180 | 532 41 50-63 | Chassis |
| 181 | 532 40 47-96 | Bushing Mtg. Fender Crgo. |
| 182 | 532 19 30-57 | Dash Lower |
| 183 | 874 78 05-20 | Bolt Fin Hex 5/16-18 x 1-1/4 |
| 189 | 817 00 05-12 | Screw 5/16-18 x 3/4 |
| 194 | 873 90 05-00 | Nut Lock Hex Flange 5/16-18 |
| 196 | 532 41 45-79 | Console Asm. Deck Lift |
| 213 | 874 76 05-12 | Bolt 5/16-18 x 3/4 |
| 217 | 532 40 91-67 | Rod Pivot Hood |
| 218 | 532 19 63-95 | X-Piece Hood Step |
| 228 | 532 19 51-61 | Stud Fastener |
| 235 | 532 40 61-29 | Spacer Fender |
| 236 | 873 93 05-00 | Nut Center Lock 5/16-18 |
| 287 | 817 60 04-06 | Screw 1/4-20 x 3/8 |
| 302 | 532 18 38-23 | Insert Lens Reflective |

NOTE: All component dimensions given in U.S. inches
1 inch = 25.4 mm

TRACTOR -- MODEL NO. MC195H42LT (96042011400), PRODUCT NO. 960 42 01-14
DRIVE



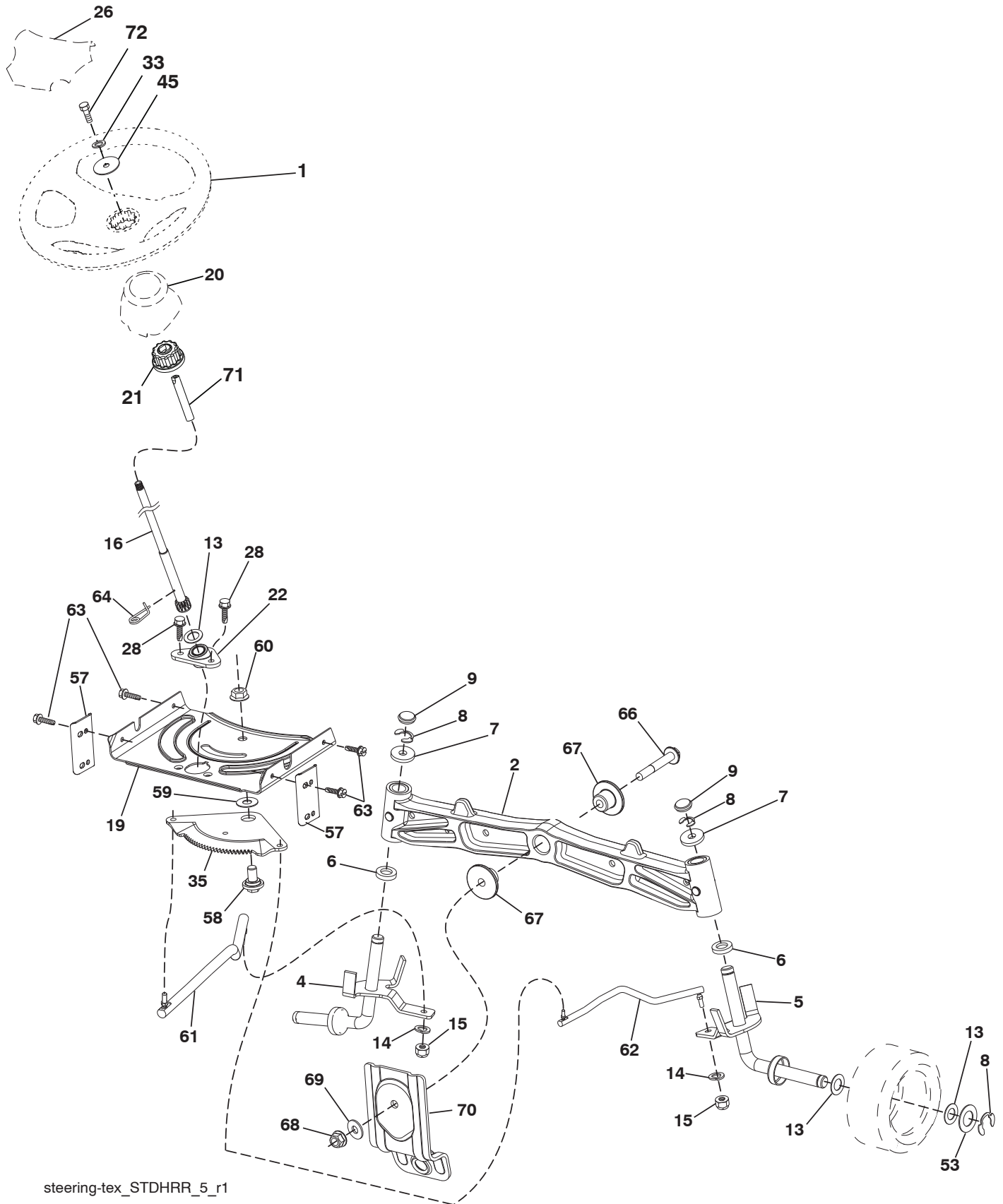
drive-tex_K46_fender_18

**TRACTOR -- MODEL NO. MC195H42LT (96042011400), PRODUCT NO. 960 42 01-14
DRIVE**

| KEY NO. | PART NO. | DESCRIPTION | KEY NO. | PART NO. | DESCRIPTION |
|---------|--------------|--------------------------------|---------|--------------|-------------------------------|
| 1 | ---- | Transaxle, TUFFTORQ K46 BA | 167 | 532 40 52-57 | Latch Brake Parking |
| 2 | 532 12 35-83 | Key | 170 | 532 41 34-30 | Keeper Belt Centerspan |
| 15 | 819 13 13-16 | Washer 13/32 x 13/16 x 16 Ga. | 174 | 532 19 72-89 | Nut Push |
| 17 | 532 41 36-78 | Spring, Brake | 175 | 532 40 85-39 | Shaft Asm Shift |
| 22 | 532 19 76-60 | Rod Shift | 176 | 532 19 62-14 | Arm Clevis Rod Shift |
| 23 | 532 14 08-45 | Knob | 178 | 532 19 74-56 | Spring Shift |
| 29 | 532 40 38-06 | Rod, Brake | 183 | 532 13 70-57 | Spacer Split |
| 33 | 812 00 00-01 | Ring E | 184 | 532 41 12-89 | Handle Parking Brake |
| 35 | 532 19 77-22 | Rod, Brake, Park | 185 | 872 11 06-22 | Bolt Rdhd Sqnk 3/8-16 x 2-3/4 |
| 42 | 532 12 48-72 | Cover, Foot Pedal | 186 | 532 19 43-21 | Spacer Retainer |
| 49 | 872 11 06-14 | Bolt | 187 | 819 13 32-10 | Washer |
| 50 | 532 19 43-27 | Pulley Idler Flat | 188 | 532 19 43-23 | Link Clutch Ground Drive |
| 51 | 873 90 06-00 | Lock Nut 3/8-16 | 189 | 532 19 43-17 | Bellcrank Ground Drive |
| 52 | 532 19 43-26 | Idler V-Groove 910" Offset | 190 | 532 19 43-18 | Keeper Bellcrank Ground Drive |
| 56 | 532 13 09-69 | V-Belt, Drive | 205 | 532 12 17-48 | Washer |
| 64 | 532 19 62-00 | Shaft Asm. Pedal Brake Control | 211 | 532 19 62-12 | Bushing Brake Shaft |
| 70 | 532 41 13-29 | Console | 216 | 532 19 61-31 | Bracket Pulley Idler |
| 73 | 874 49 05-44 | Bolt Hex Flghd 5/16-18 Gr. 5 | 221 | 532 40 31-87 | Retainer Spring Clip Handle |
| 74 | 532 14 24-32 | Screw 1/4 x 1/2 | 225 | 532 40 33-19 | Keeper Belt Trans. |
| 80 | 532 41 00-24 | Strap Torque | 226 | 532 40 15-64 | Bracket Mount Touque |
| 99 | 532 41 57-42 | Rod Bypass | 230 | 532 18 89-67 | Washer Hardened |
| 116 | 873 90 05-00 | Nut Lock Hex Flange 5/16-18 | 231 | 532 40 72-87 | Idler V-Groove 1.688" Offset |
| 125 | 817 00 05-12 | Screw 5/16-18 x 3/4 | 232 | 874 78 07-16 | Bolt 7/16-14 x 1 Gr. 5 |
| 143 | 817 49 05-08 | Screw Thdrol 5/16-18 x 1/2 | 233 | 532 40 52-96 | Washer Serrated |
| 153 | 532 12 47-88 | Retainer Spring | 279 | 532 41 57-42 | Link Shift |
| 159 | 876 02 04-12 | Pin Cotter 1/8 x 3/4 | | | |
| 160 | 532 16 94-84 | Retainer Clip | | | |
| 161 | 532 10 57-09 | Spring, Return, Clutch | | | |
| 166 | 532 42 83-05 | Nut Push | | | |

NOTE: All component dimensions given in U.S. inches
1 inch = 25.4 mm

TRACTOR -- MODEL NO. MC195H42LT (96042011400), PRODUCT NO. 960 42 01-14
STEERING ASSEMBLY



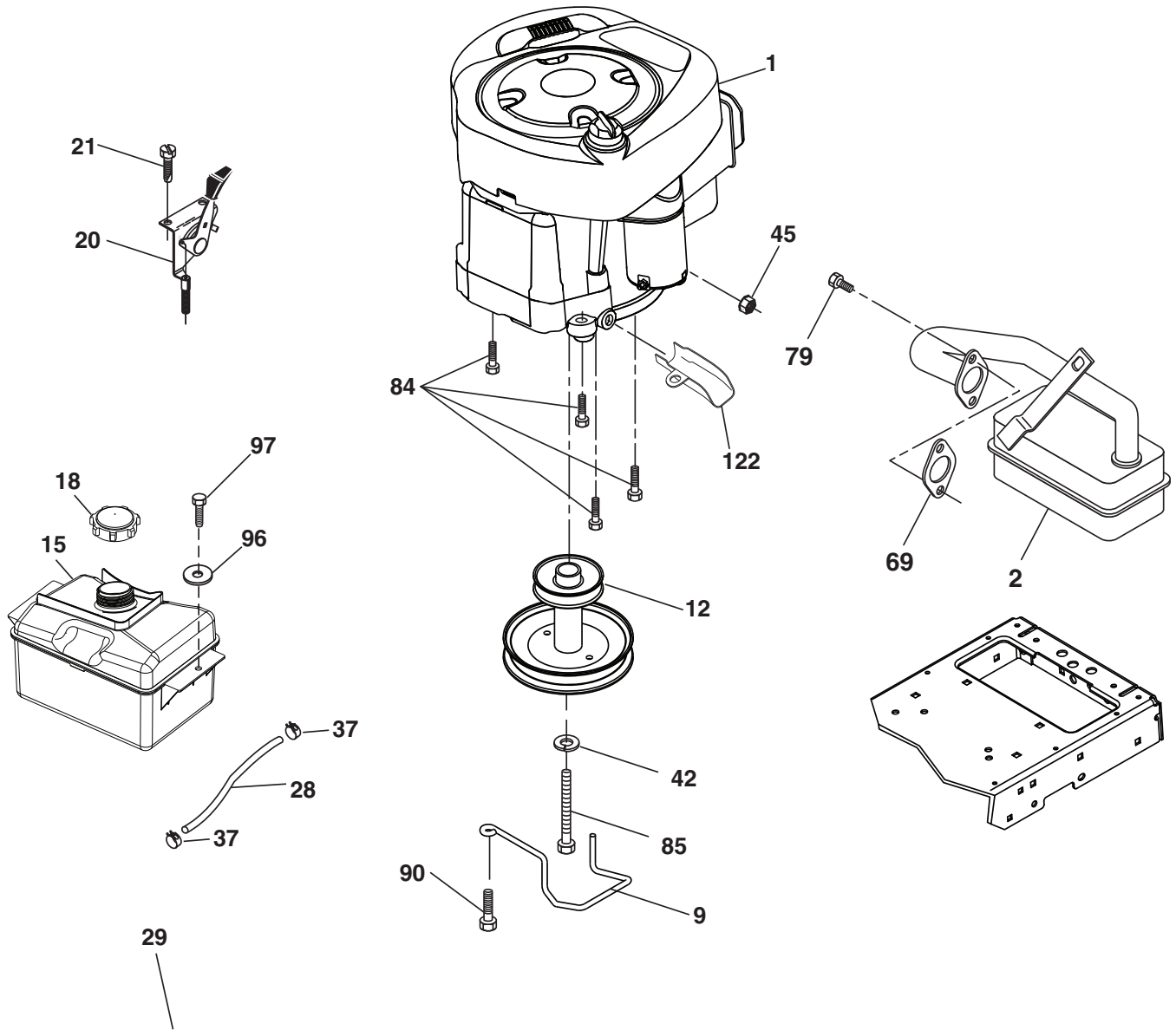
steering-tex_STDHRR_5_r1

**TRACTOR -- MODEL NO. MC195H42LT (96042011400), PRODUCT NO. 960 42 01-14
STEERING ASSEMBLY**

| KEY NO. | PART NO. | DESCRIPTION |
|----------------|-----------------|-------------------------------------|
| 1 | 532 42 41-46 | Wheel, Steering |
| 2 | 532 19 59-68 | Axle Asm., Front |
| 4 | 532 40 30-87 | Spindle Asm., LH |
| 5 | 532 40 30-88 | Spindle Asm., RH |
| 6 | 532 12 49-31 | Washer Thrust 0.75 x 1.23 |
| 7 | 532 12 17-48 | Washer 25/32 x 1-5/8 x 16 Ga. |
| 8 | 812 00 00-29 | Ring, Clip #T5304-75 |
| 9 | 532 12 12-32 | Cap, Spindle |
| 13 | 532 12 17-49 | Washer 25/32 x 1-1/4 x 16 Ga. |
| 14 | 810 04 06-00 | Washer Lock 3/8 |
| 15 | 873 54 06-00 | Nut, Crown Lock 3/8-24 unf |
| 16 | 532 42 93-74 | Shaft Steering |
| 19 | 532 19 47-29 | Plate Steering |
| 20 | 532 41 12-91 | Boot Steering |
| 21 | 532 18 67-37 | Adapter, Wheel Steering |
| 22 | 532 42 05-37 | Strg. Supt. Lower |
| 26 | 532 42 46-91 | Insert, Wheel Steering |
| 28 | 817 00 06-12 | Screw 3/8-16 x 3/4 |
| 33 | 810 04 05-00 | Washer Lock 5/16 |
| 35 | 532 19 47-32 | Gear, Sector Plate |
| 45 | 819 11 38-12 | Washer 11/32 x 2-3/8 x 12 Ga. |
| 53 | 532 18 89-67 | Washer Hardened .793 x 1.637 x .060 |
| 57 | 532 40 74-65 | Bracket Upstop |
| 58 | 532 19 47-47 | Bolt Shoulder Sector Pivot CFM |
| 59 | 532 19 47-48 | Washer Thrust Sector Steering |
| 60 | 873 97 10-00 | Nut Flange Lock 5/8-11 |
| 61 | 532 19 47-40 | Draglink, LH |
| 62 | 532 19 47-41 | Draglink, RH |
| 63 | 817 00 05-12 | Screw 5/16-18 x 3/4 |
| 64 | 532 19 98-49 | Retainer Clip Spring Steering |
| 66 | 871 02 07-48 | Bolt Hex Fghd 7/16-14 x 3 Serr |
| 67 | 532 19 47-37 | Bushing PM Front Axle |
| 68 | 873 90 07-00 | Nut Lock Flange 7/16-14 Gr. 5 |
| 69 | 532 19 91-62 | Washer 1.5 x .505 x .118 |
| 70 | 532 19 61-97 | Bracket Deck Susp. Front |
| 71 | 532 19 07-52 | Shaft Ext. Steering |
| 72 | 532 42 89-82 | Bolt 5/16-18 x 4 w/Patch |

NOTE: All component dimensions given in U.S. inches
1 inch = 25.4 mm

**TRACTOR -- MODEL NO. MC195H42LT (96042011400), PRODUCT NO. 960 42 01-14
ENGINE**



29

OPTIONAL EQUIPMENT

Spark Arrester

engine-tex_BS_36

TRACTOR -- MODEL NO. MC195H42LT (96042011400), PRODUCT NO. 960 42 01-14 ENGINE

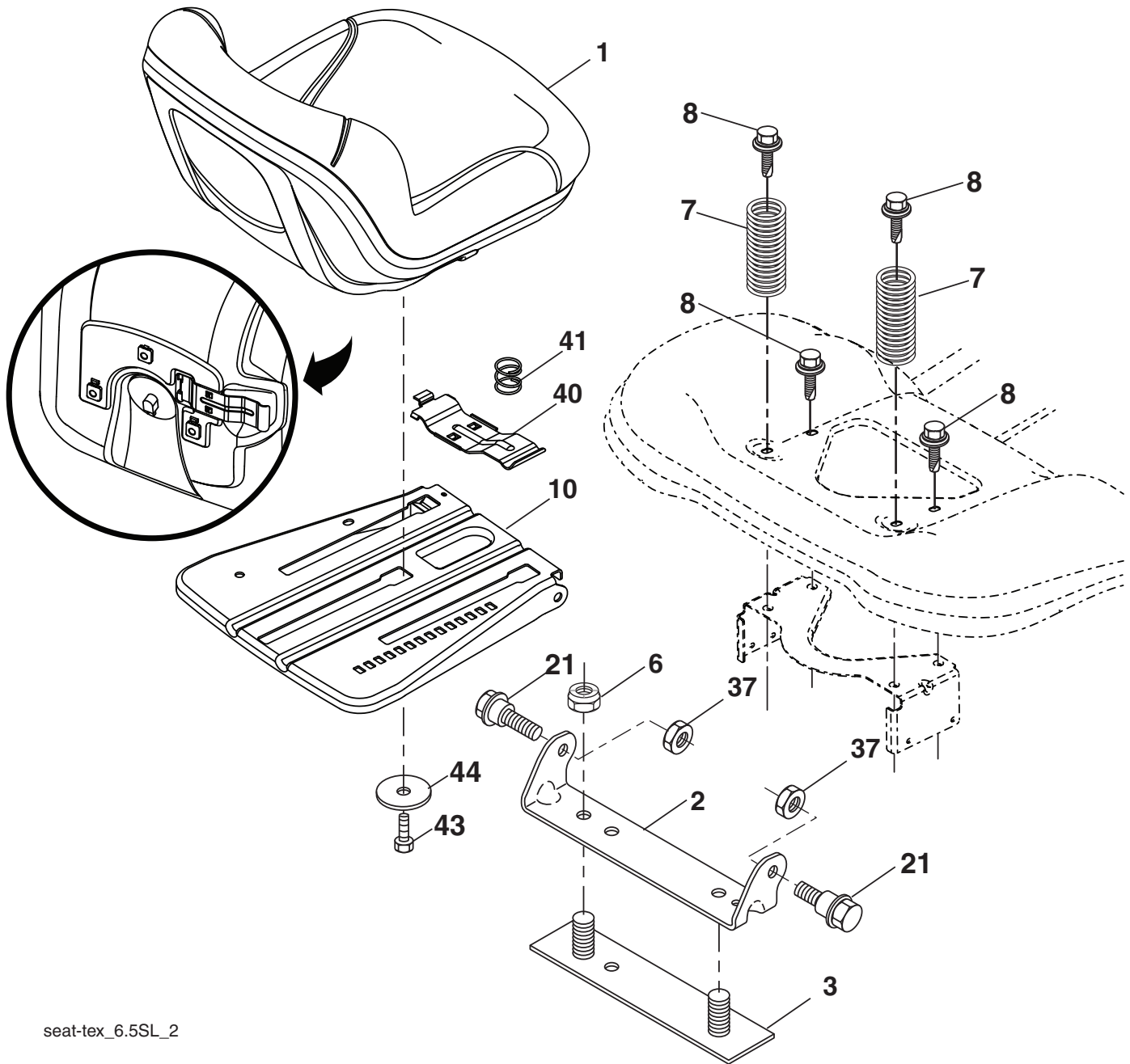
| KEY NO. | PART NO. | DESCRIPTION |
|---------|--------------|--|
| 1 | ----- | Engine Briggs Model No. 31P677-0804-B1 |
| 2 | 532 13 73-52 | Muffler |
| 9 | 532 19 43-20 | Keeper Belt Engine |
| 12 | 532 40 54-71 | Pulley Engine |
| 15 | 532 40 75-45 | Tank Fuel |
| 18 | 532 43 02-20 | Cap Asm Fuel |
| 20 | 532 18 38-97 | Control Throttle/Choke |
| 21 | 532 41 63-58 | Screw #10 x .750 BOS Thread |
| 28 | 532 40 11-37 | Fuel Line |
| 29 | 532 13 71-80 | Spark Arrester Kit |
| 37 | 532 12 34-87 | Clamp Hose |
| 42 | 810 04 07-00 | Washer Lock 7/16 |
| 45 | 873 51 04-00 | Nut Keps Hex 1/4-20 unc |
| 69 | 532 16 52-91 | Gasket |
| 79 | 532 19 23-34 | Screw 5/16-18 x .75 |
| 84 | 817 06 06-20 | Screw 3/8-16 x 1-1/4 |
| 85 | 532 17 39-37 | Bolt 7/16-20 x 4 |
| 90 | 817 00 06-16 | Screw 3/8-16 x 1 |
| 96 | 819 09 14-16 | Washer 9/32 x 7/8 x 16 Ga. |
| 97 | 817 67 04-12 | Screw 1/4 - 20 x 3/4 |
| 122 | 532 42 19-22 | Extension Drain Oil |

NOTE: All component dimensions given in U.S. inches
1 inch = 25.4 mm

Engine Power Rating Information

The gross power rating for individual gas engine models is labeled in accordance with SAE (Society of Automotive Engineers) code J1940 (Small Engine Power & Torque Rating Procedure), and rating performance has been obtained and corrected in accordance with SAE J1995 (Revision 2002-05). Torque values are derived at 3060 RPM; horsepower values are derived at 3600 RPM. Actual gross engine power will be lower and is affected by, among other things, ambient operating conditions and engine-to-engine variability. Given both the wide array of products on which engines are placed and the variety of environmental issues applicable to operating the equipment, the gas engine will not develop the rated gross power when used in a given piece of power equipment (actual "on-site" or net power). This difference is due to a variety of factors including, but not limited to, accessories (air cleaner, exhaust, charging, cooling, carburetor, fuel pump, etc.), application limitations, ambient operating conditions (temperature, humidity, altitude), and engine-to-engine variability. Due to manufacturing and capacity limitations, Briggs & Stratton may substitute an engine of higher rated power for this Series engine.

**TRACTOR -- MODEL NO. MC195H42LT (96042011400), PRODUCT NO. 960 42 01-14
SEAT ASSEMBLY**

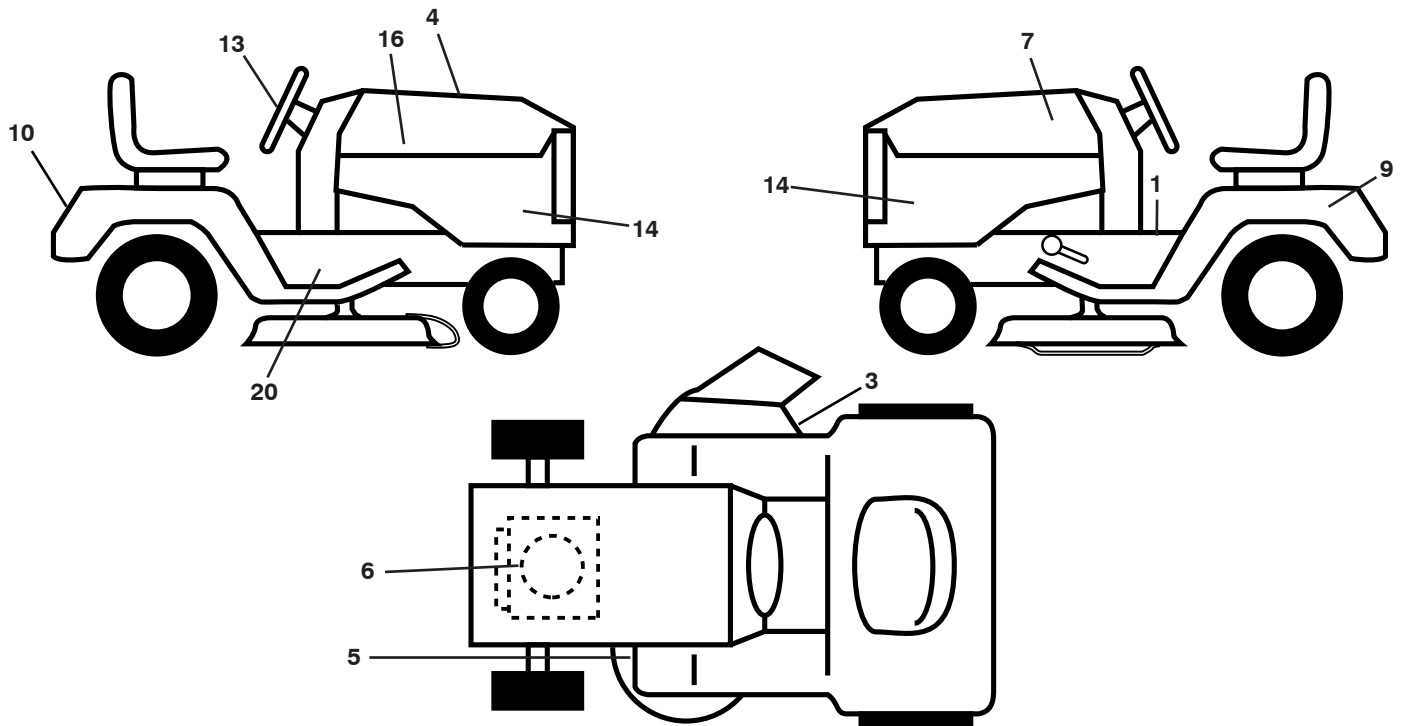


seat-tex_6.5SL_2

| KEY NO. | PART NO. | DESCRIPTION | KEY NO. | PART NO. | DESCRIPTION |
|---------|--------------|-------------------------------|---------|--------------|-------------------------------|
| 1 | 532 19 75-11 | Seat | 37 | 873 80 05-00 | Nut, Lock 5/16-18 unc |
| 2 | 532 18 01-66 | Bracket Pivot Fender | 40 | 532 19 76-61 | Handle Slide |
| 3 | 532 14 06-75 | Strap, Asm Fender | 41 | 532 19 82-00 | Spring Latch |
| 6 | 873 80 06-00 | Nut, Lock w/Ins. 3/8-16 unc | 43 | 874 76 06-12 | Bolt 3/8-16 unc x 3/4 |
| 7 | 532 12 41-81 | Spring, Seat Cprsn | 44 | 819 13 38-12 | Washer 13/32 x 2 3/8 x 12 Ga. |
| 8 | 532 17 18-77 | Bolt 5/16-18 unc x 3/4 w/Sems | | | |
| 10 | 532 19 69-77 | Pan, Seat | | | |
| 21 | 532 17 18-52 | Bolt, Shoulder 5/16-18 | | | |

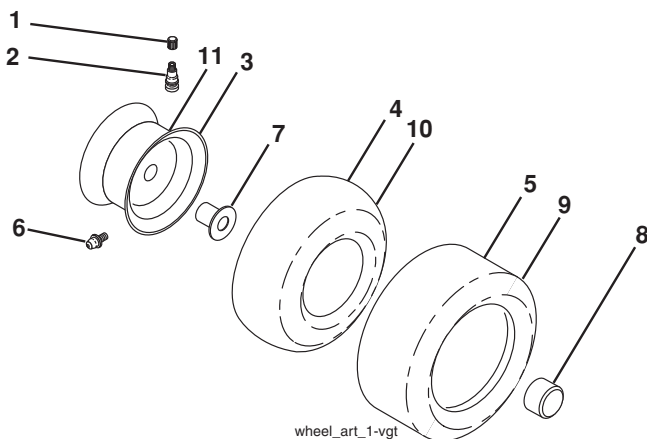
NOTE: All component dimensions given in U.S. inches
1 inch = 25.4 mm

**TRACTOR -- MODEL NO. MC195H42LT (96042011400), PRODUCT NO. 960 42 01-14
DECALS**



| KEY NO. | PART NO. | DESCRIPTION | KEY NO. | PART NO. | DESCRIPTION |
|---------|--------------|--------------------------|---------|--------------|-----------------------------|
| 1 | 532 41 16-58 | Decal, Warning Sym. | 14 | 532 43 24-64 | Decal, Panel Side |
| 3 | 532 17 05-63 | Decal, Warning | 16 | 532 40 82-58 | Decal, Hood RH |
| 4 | 532 43 24-36 | Decal, Replacement Parts | -- | 532 16 69-60 | Decal, Bypass |
| 5 | 532 16 03-96 | Decal, V-Belt Sch. | -- | 532 40 95-05 | Pad, Footrest, LH |
| 6 | 532 40 88-34 | Decal, Eng. HP | -- | 532 41 12-73 | Pad, Footrest, RH |
| 7 | 532 40 82-59 | Decal, Hood LH | -- | 532 43 25-35 | Manual, Oper English/French |
| 9 | 532 14 50-05 | Decal, Battery Dnge/Poi | -- | 532 43 25-36 | Manual, Oper Spanish |
| 10 | 532 43 24-65 | Decal, Fender | -- | 532 43 25-37 | Manual, Parts |
| 13 | 532 42 42-36 | Decal, Steering Whl | | | |

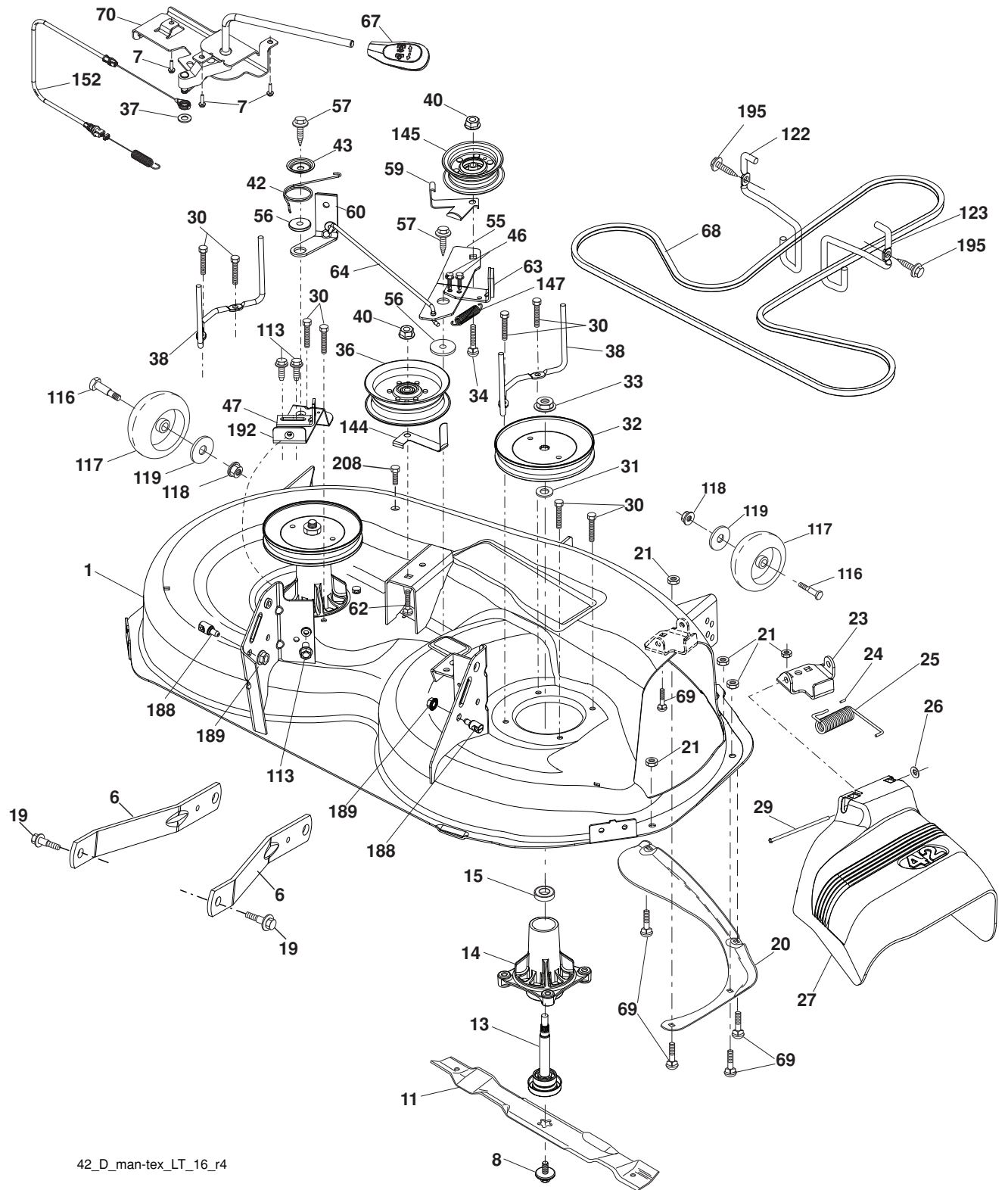
WHEELS AND TIRES



| KEY NO. | PART NO. | DESCRIPTION |
|---------|--------------|------------------------------------|
| 1 | 532 05 91-92 | Cap, Valve, Tire |
| 2 | 532 06 51-39 | Stem, Valve |
| 3 | 532 12 51-21 | Rim Assembly, Front |
| 4 | 532 05 99-04 | Tube, Front (Service Item Only) |
| 5 | 532 10 62-22 | Tire, Front |
| 6 | 532 12 49-57 | Fitting, Grease (Front Wheel Only) |
| 7 | 532 12 49-59 | Bearing, Flange (Front Wheel Only) |
| 8 | 532 19 32-68 | Cap, Axle (Front Wheel Only) |
| 9 | 532 42 05-31 | Tire, Rear |
| 10 | 532 12 49-26 | Tube, Rear (Service Item Only) |
| 11 | 532 12 51-22 | Rim Assembly, Rear |
| -- | 532 14 43-34 | Sealant, Tire (10 oz. Tube) |

NOTE: All component dimensions given in U.S. inches
1 inch = 25.4 mm

TRACTOR -- MODEL NO. MC195H42LT (96042011400), PRODUCT NO. 960 42 01-14
MOWER DECK



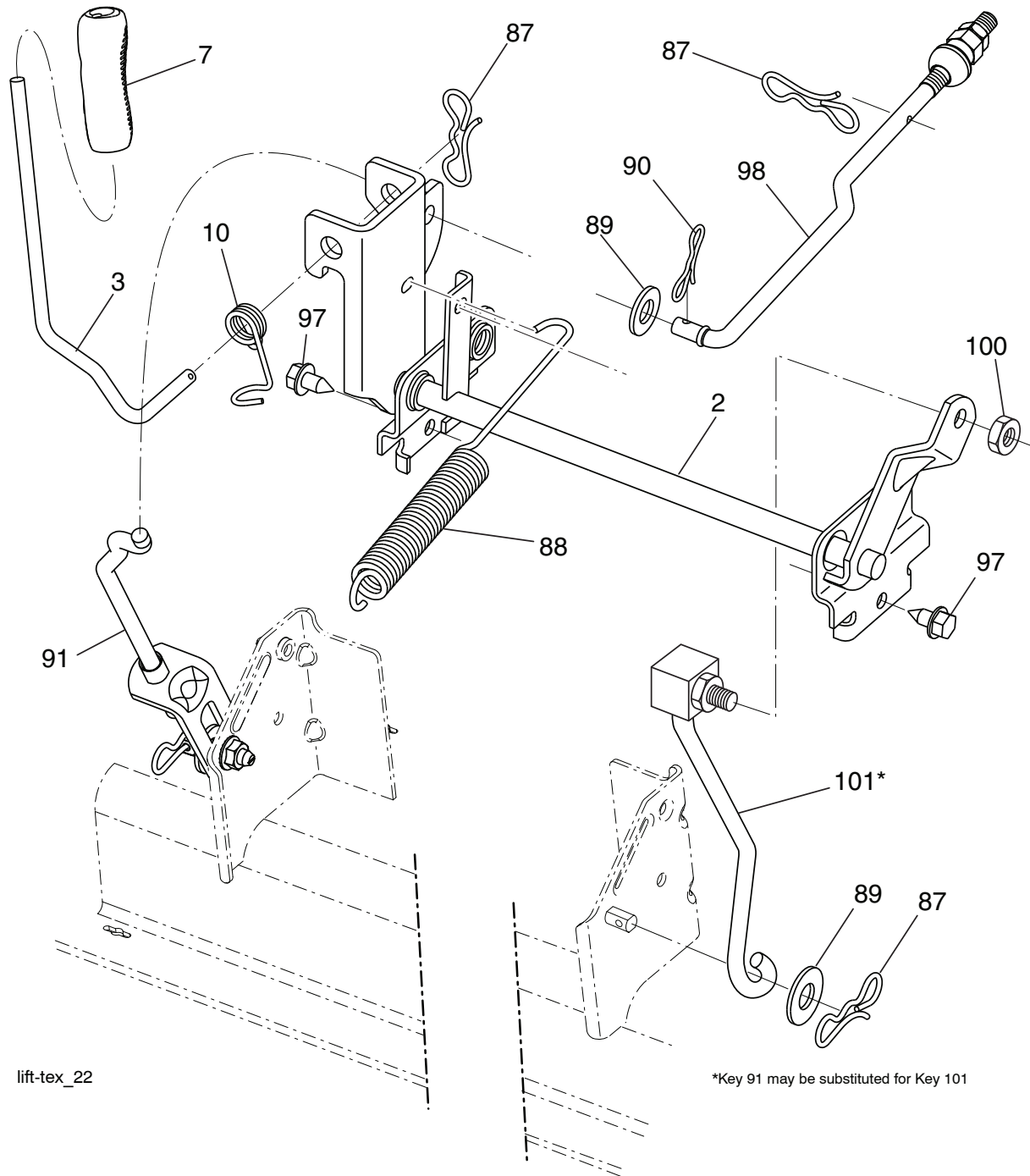
42_D_man-tex_LT_16_r4

**TRACTOR -- MODEL NO. MC195H42LT (96042011400), PRODUCT NO. 960 42 01-14
MOWER DECK**

| KEY NO. | PART NO. | DESCRIPTION | KEY NO. | PART NO. | DESCRIPTION |
|---------|--------------|---|---------|--------------|--|
| 1 | 532 19 64-95 | Mower Housing | 57 | 817 00 06-16 | Screw Hex Wsh. Thd. 3/8-16 x 1 |
| 6 | 532 19 51-86 | Arm Suspension | 59 | 532 14 10-43 | Guard, Tuv. Idler (94) |
| 7 | 532 41 63-58 | Screw #10 x 0.750 | 60 | 532 19 72-61 | Arm Brake Mower |
| 8 | 532 19 30-03 | Bolt/Washer Asm. 7/16-20 unf | 62 | 872 11 06-16 | Bolt Rdhd. Sqnk. 3/8-16 unc x 2 |
| 11 | 532 13 89-71 | Blade, 42" Hi-Lift (For bagging or discharge) | 63 | 532 19 94-77 | Arm Brake Mower |
| -- | 532 13 41-49 | Blade, 42" Mulching Standard | 64 | 532 19 97-90 | Linkage Brake |
| -- | 532 13 97-75 | Blade, 42" Mulching Premium | 67 | 532 40 30-12 | Handle, Clutch Cable |
| -- | 532 42 47-52 | Blade, 42SP" 3N1 | 68 | 532 42 96-36 | V-Belt |
| -- | 532 42 27-19 | Blade, 42SP" 3N1 Premium | 69 | 872 14 05-05 | Bolt Rdhd. Sqnk. 5/16-18 x 5/8 |
| 13 | 532 19 28-72 | Shaft Assembly, Mandrel | 70 | 532 19 83-32 | Clutch Asm. Manual |
| 14 | 532 18 72-81 | Housing, Mandrel | 113 | 817 00 05-10 | Screw 5/16-18 |
| 15 | 532 11 04-85 | Bearing, Ball, Mandrel | 116 | 532 12 48-42 | Bolt, Shoulder |
| 19 | 532 19 65-39 | Bolt, Shoulder | 117 | 532 18 86-06 | Wheel, Gauge |
| 20 | 532 15 97-70 | Baffle, Vortex | 118 | 873 93 06-00 | Nut, Crownlock 3/8-1 |
| 21 | 873 68 05-00 | Nut Crown Lock 5/16-18 | 119 | 819 12 14-14 | Washer 13/32 x 7/8 x 14 Ga. |
| 23 | 532 19 25-57 | Bracket, Deflector | 122 | 532 19 72-58 | Keeper Belt Eng. LH |
| 24 | 532 10 53-04 | Cap, Sleeve | 123 | 532 19 72-59 | Keeper Belt Eng. RH |
| 25 | 532 19 70-26 | Spring, Torsion, Deflector | 144 | 532 19 92-04 | Keeper Belt |
| 26 | 532 11 04-52 | Nut, Push | 145 | 532 19 31-97 | Pulley, Idler, Flat |
| 27 | 532 40 30-04 | Shield, Deflector | 147 | 532 40 19-71 | Spring Return |
| 29 | 532 13 14-91 | Rod, Hinge | 152 | 532 40 87-14 | Cable Clutch Manual w/Spr. |
| 30 | 532 17 39-84 | Screw Thdrol. Rolling Wsh. Hd. | 188 | 532 19 51-61 | Stud Fastener |
| 31 | 532 18 76-90 | Washer, Spacer | 189 | 873 90 05-00 | Nut Lock Hex Flange |
| 32 | 532 19 74-73 | Pulley, Mandrel | 192 | 532 19 72-60 | Bracket Brake Stand LH |
| 33 | 532 40 02-34 | Nut, Toplock, Flanged | 195 | 817 00 06-12 | Screw Hex Wsh. Thdrol. 3/8-16 x 3/4 |
| 34 | 872 11 06-12 | Bolt Carr. Sh. 3/8-16 x 1-1/2 Gr. 5 | 208 | 817 67 06-08 | Screw 3/8-16 x 1/2 |
| 36 | 532 19 73-79 | Pulley Idler | -- | 532 19 28-70 | Mandrel Assembly (Includes housing, shaft and shaft hardware only-pulley not included) |
| 37 | 819 13 13-16 | Washer 13/32 x 13/16 x 16 Ga. | -- | 532 19 96-08 | Replacement Mower, Complete |
| 38 | 532 19 91-89 | Keeper Belt LH Mandrel | | | |
| 40 | 873 90 06-00 | Nut, Lock Flg. 3/8-16 unc | | | |
| 42 | 532 19 84-10 | Spring Trosion Brake | | | |
| 43 | 532 19 72-56 | Spring Torsion Retainer | | | |
| 46 | 532 13 77-29 | Screw Thdrol. 1/4-20 x 5/8 | | | |
| 47 | 532 19 72-50 | Bracket Clutch Cable | | | |
| 55 | 532 19 72-49 | Arm, Idler | | | |
| 56 | 532 19 90-92 | Spacer, Retainer | | | |

NOTE: All component dimensions given in U.S. inches
1 inch = 25.4 mm

**TRACTOR -- MODEL NO. MC195H42LT (96042011400), PRODUCT NO. 960 42 01-14
MOWER LIFT**



| KEY NO. | PART NO. | DESCRIPTION |
|---------|--------------|------------------------------|
| 2 | 532 42 20-27 | Shaft Asm., Cross Lift |
| 3 | 532 19 52-31 | Lever Asm., Lift RH |
| 7 | 532 41 15-55 | Grip, Lever |
| 10 | 532 19 63-14 | Spring Torsion |
| 87 | 532 19 42-09 | Pin Cotter 7/16 Bow Tie Lock |
| 88 | 532 41 07-10 | Spring Lift Assist |
| 89 | 819 19 19-12 | Washer Clear Zinc |
| 90 | 532 19 42-08 | Pin Cotter 5/16 Bow Tie Lock |

| KEY NO. | PART NO. | DESCRIPTION |
|---------|--------------|----------------------------------|
| 91 | 532 19 51-81 | Link Lift Susp Mower Rear |
| 97 | 817 00 06-12 | Screw 3/8-16 x .75 Smgml Tap/R.Z |
| 98 | 532 19 52-70 | Link Lift Susp. Front Mower |
| 100 | 873 93 06-00 | Nut Centerlock 3/8 -16 unc |
| 101 | 532 40 70-03 | Link Asm. Lift Fixed |

NOTE: All component dimensions given in U.S. inches
1 inch = 25.4 mm

SERVICE NOTES



McCULLOCH