

HUSQVARNA OUTDOOR PRODUCTS ITALIA

PNC	Type/ Prefix/ nd	Model	Brand
953900762	01	ELITE 2.210 BT	McCulloch

Number of Pages 1 of 5

Factory: IIQ - Valmadrera	Product Group: OP 93
Publication Number: MIPL2007_V100000003	Petrol Portable
Publication Date: 06/03/07	Sub Group 9433

FIGURE 1

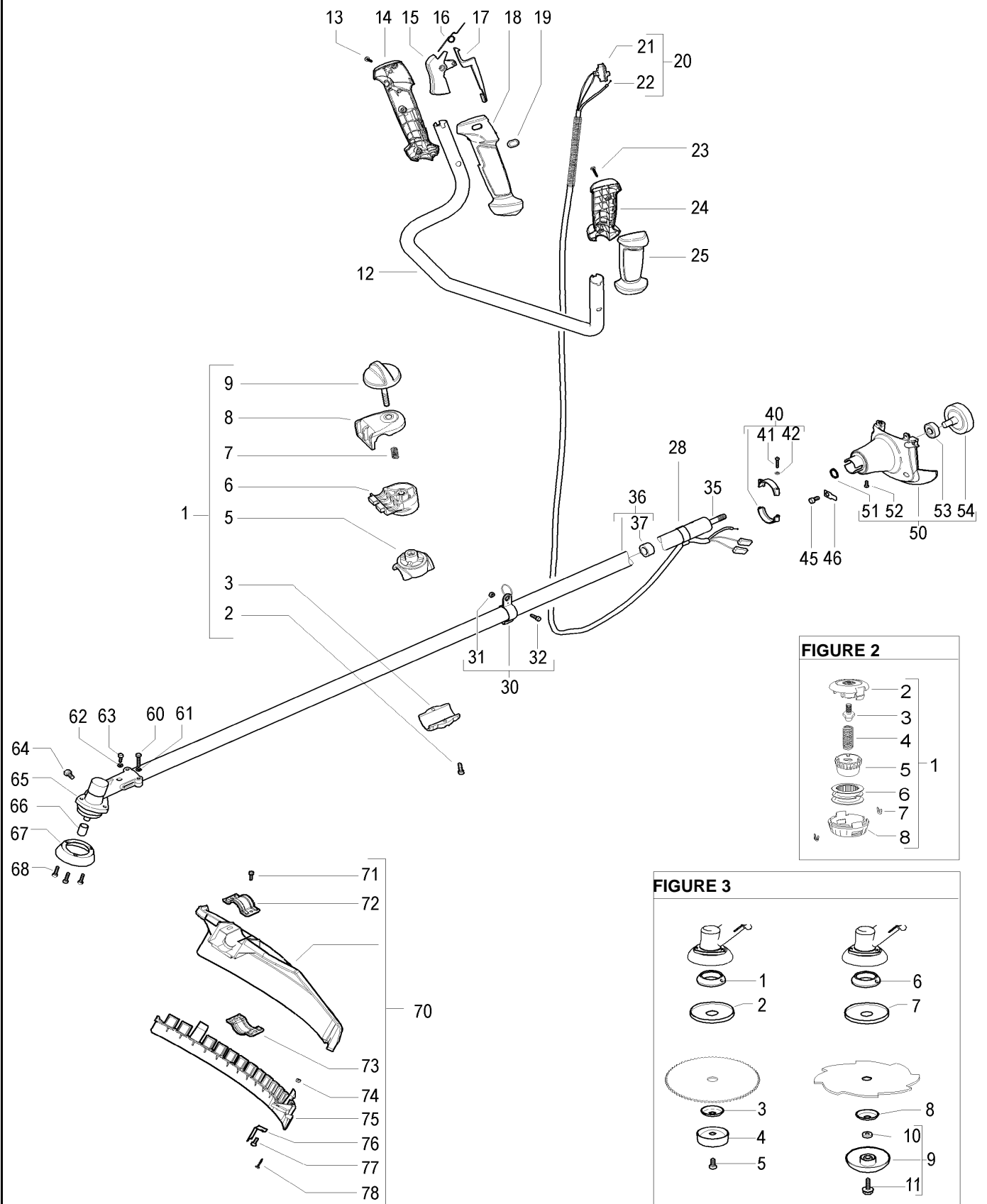


FIGURE 2

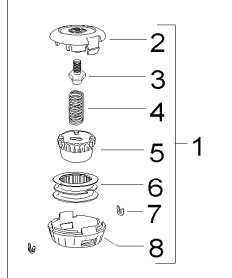
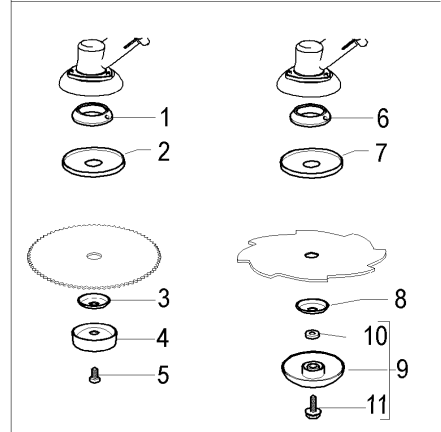


FIGURE 3



Item	P/N McC	P/N ELX	Qty	DESCRIPTION
FIGURE 1				
1	242902	538242902	1	clamp assy
2	• 235806	538235806	2	screw M5x20
3	• 242900	538242900	1	lower shaft clamp
5	• 243122	538243122	1	upper shaft clamp
6	• 242897	538242897	1	lower double handle clamp
7	• 242901	538242901	1	spring
8	• 242898	538242898	1	upper double handle clamp
9	• 242917	538242917	1	knob + screw M8x65
12	249249	538249249	1	handle bar
13	240862	538240862	3	screw 4x18 - self threading
14	242533	538242533	1	right handle (right half)
15	242537	538242537	1	throttle trigger
16	242540	538242540	1	spring
17	242538	538242538	1	safety trigger
18	242534	538242534	1	right handle (left half)
19	242648	538242648	1	cap
C 20	242607	538242607	1	wires ass'y
C 21	• 242439	538242439	1	switch
C 22	• 243061	538243061	1	throttle cable
23	240862	538240862	2	screw 4x18 - self threading
24	242535	538242535	1	left handle (right half)
25	242536	538242536	1	left handle (left half)
28	229849	538229849	1	cable retainer
30	237783	538237783	1	harness ring ass'y
31	• 236642	538236642	1	nut M6
32	• 243852	538243852	1	screw M6x20
35	229829	538229829	1	drive shaft
36	240830	538240830	1	30x1455 shaft
37	• 236383	538236383	5	bushing ass'y
40	248805	538248805	1	clamp assy
41	• 248804	538248804	2	screw M5x30
42	• 236529	538236529	2	grower d.5
45	242174	538242174	4	screw M5x20
46	228139	538228139	1	fast on
50	242625	538242625	1	a/v mount assy
51	• 236378	538236378	1	seeger ring
52	• 235802	538235802	1	screw M5x14
53	• 235918	538235918	1	bearing
54	• 227284	538227284	1	clutch drum
60	235804	538235804	2	M5x30 screw
61	236529	538236529	2	grower d.5
62	236529	538236529	1	grower d.5
63	236381	538236381	1	M5x10 screw
64	240151	538240151	1	screw M8x10
65	240824	538240824	1	gear box ass'y
66	247272	538247272	1	spacer
B 67	240767	538240767	1	flange guard
68	240688	538240688	3	screw/washer

Item	P/N McC	P/N ELX	Qty	DESCRIPTION
A 70	248960	538248960	1	d.30 safety guard ass'y
71	• 227563	538227563	2	M5x16 screw
72	• 242636	538242636	1	upper clamp
73	• 242752	538242752	1	lower clamp
74	• 229208	538229208	2	nut M5
75	• 242630	538242630	1	string head guard
76	• 241973	538241973	1	line cutter
77	• 227563	538227563	2	M5x16 screw
78	• 240862	538240862	1	screw 4x18

FIGURE 2				
A 1	531025002	531025002	1	P 35 trimmer head
2	• 537421501	537421501	1	body
3	• 537427901	537427901	1	adaptor P35
C 4	• 537186001	537186001	1	spring T35
C 5	• 537421801	537421801	1	knob
C 6	• 537421701	537421701	1	spool (without line)
C 7	• 537419701	537419701	2	bushing
8	• 537421601	537421601	1	cover

FIGURE 3				
A 1	242475	538242475	1	flange
A 2	241155	538241155	1	grass shield
A 3	229834	538229834	1	flange
A 4	236596	538236596	1	cup
A 5	229842	538229842	1	cup screw
A 6	242410	538242410	1	flange
A 7	241155	538241155	1	grass shield
A 8	229834	538229834	1	flange
A 9	240809	538040809	1	idle cup
10	• 240807	538240807	1	spacer
A 11	• 240806	538240806	1	idle cup screw

A=ALTA ROTAZIONE
 B=MEDIA ROTAZIONE
 C=ALTA ROTAZIONE
 NUOVI CODICI

A=HIGH MOVING
 B=MEDIUM MOVING
 C=SLOW MOVING
 NEW P. NUMBERS

A=HAUTE DEMANDE
 B=MOYENNE DEMANDE
 C=BASSE DEMANDE
 NOUVELLES REFERENCES

A=GROBE NACHFRAGE
 B=MITTELMAESSIGE
 C=WENIGE NACHFRAGE
 NEU CODEX

FIGURE 4

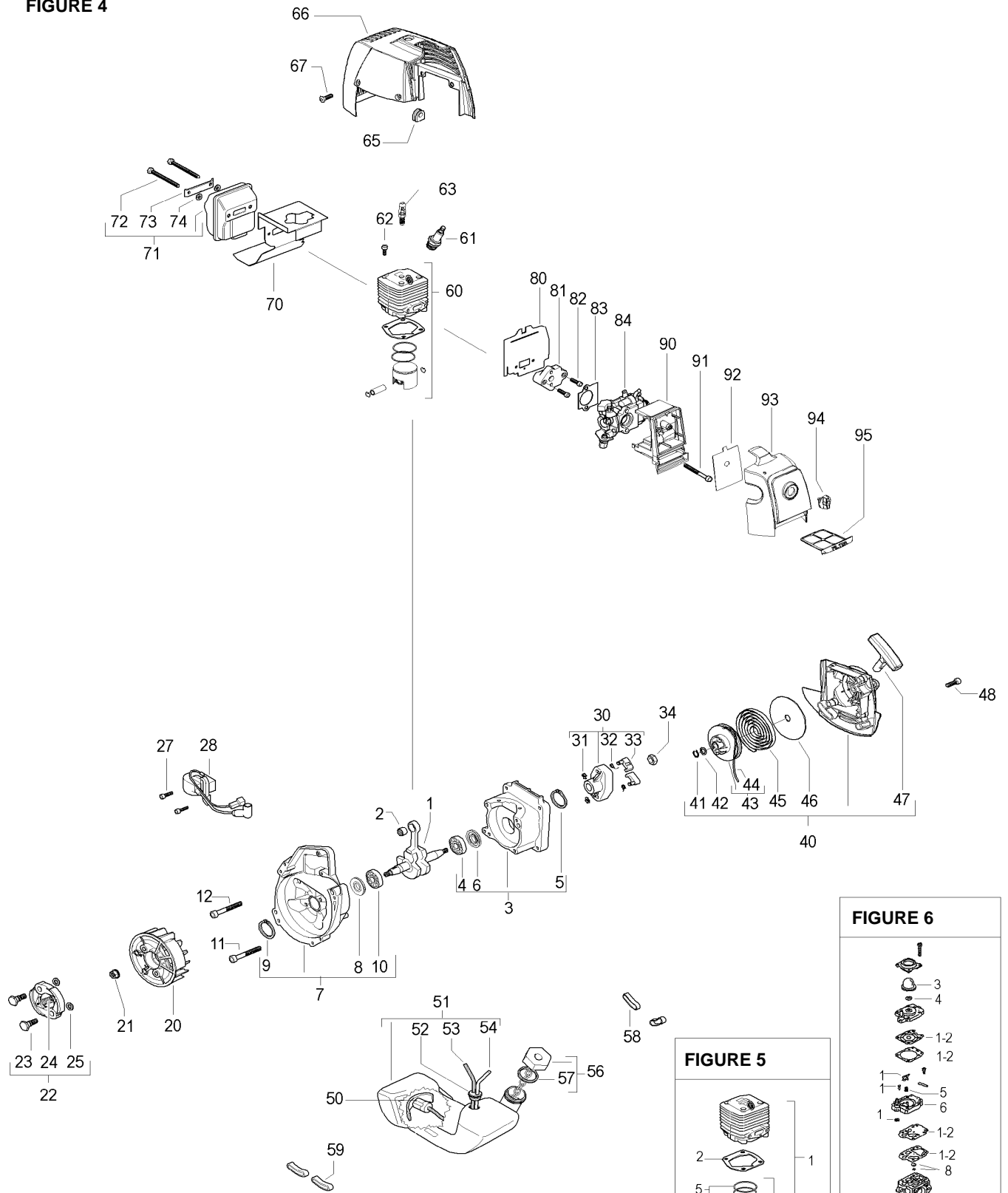


FIGURE 6

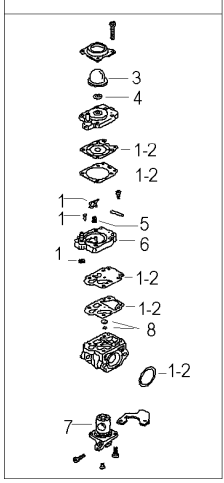
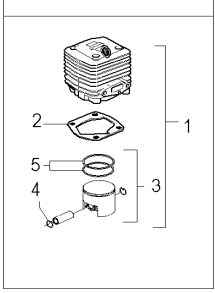


FIGURE 5



Item	P/N McC	P/N ELX	Qty	DESCRIPTION
FIGURE 4				
1	243725	538243725	1	crankshaft ass'y
C 2	501451601	501451601	1	needle bearing
3	250075	538250075	1	Carter kit (starter)
4	• 227541	538227541	1	ball bearing
5	• 240982	538240982	1	seeger ring
C 6	• 243174	538243174	1	seal
7	250074	538250074	1	Carter kit (flywheel)
C 8	• 243174	538243174	1	seal
9	• 240982	538240982	1	seeger ring
10	• 227541	538227541	1	ball bearing
11	235804	538235804	2	screw M5x30
12	235808	538235808	2	screw M5 X 50 TCE
20	242673	538242673	1	flywheel
21	235218	538235218	1	nut M8
B 22	248808	538248808	1	clutch assy
23	• 242369	538242369	2	clutch rod
C 24	• 241270	538241270	1	clutch spring elite
25	• 241076	538241076	2	washer
27	235806	538235806	2	screw M5 X 20 TCE
C 28	242782	538242782	1	ignition coil
30	242800	538242800	1	starter pawl ass'y
31	• 111088	538111088	2	snap ring
B 32	• 241782	538241782	2	spring
B 33	• 241781	538241781	2	pawl
34	235218	538235218	1	nut M8
C 40	242806	538242806	1	starter assy
41	• 242786	538242786	1	seeger
42	• 227470	538227470	1	washer
B 43	• 249163	538249163	1	pulley/rope assy
A 44	•• 227703	538227703	1	rope
B 45	• 227300	538227300	1	spring rewind
46	• 227467	538227467	1	shield spring
47	• 240884	538240884	1	starter-handle
48	235214	538235214	4	screw M6x20
A 50	240452	538240452	1	pick up fuel
C 51	241541	538241541	1	tank mix ass.
C 52	• 235675	538235675	1	fueltank grommet
B 53	• 229809	538229809	1	hose-fuel mm245
B 54	• 229743	538229743	1	hose fuel mm150
B 56	242484	538242484	1	fuel cap assy
A 57	• 236564	538236564	1	cap gasket
58	242632	538242632	2	grommet fuel tank elite
59	241248	538241248	2	fuel tank grommet (flywheel)
C 60	FIGURE 2			
A 61	92878	538092878	1	spark plug RDJ6J
62	227565	538227565	4	screw M5X25
63	94273	538094273	1	decompressor valve
65	236322	538236322	1	grommet
66	249420	538249420	1	engine cover
67	240688	538240688	2	screw m5x14 + washer
C 70	242854	538242854	1	gasket
C 71	241432	538241432	1	muffler assy elite
72	• 227274	538227274	2	screw M5X60
73	• 227236	538227236	1	clamp
74	• 227259	538227259	2	washer

Item	P/N McC	P/N ELX	Qty	DESCRIPTION
C 80	242855	538242855	1	gasket
C 81	241481	538241481	1	carb. Spacer
82	235806	538235806	2	screw M5 X 20 TCE
A 83	241281	538241281	1	gasket
C 84	FIGURE 3			
90	249981	538249981	1	air filter box
91	235808	538235808	2	screw M5 X 50 TCE
B 92	243782	538243782	1	air filter 1 (fabric)
93	243750	538243750	1	air filter cover
94	243765	538243765	1	knob
B 95	243851	538243851	1	air filter 2 (mesh)

FIGURE 5				
C 1	250072	538250072	1	cylinder/piston kit 43 cc
B 2	• 242366	538242366	1	gasket 0.8 mm
B 3	• 249709	538249709	1	piston kit 43 cc
4	•• 737441000	737441000	2	retaining ring
B 5	•• 240085	538240085	1	piston ring
C 1	250073	538250073	1	cylinder/piston kit 46 cc
B 2	• 242366	538242366	1	gasket 0.8 mm
B 3	• 249710	538249710	1	piston kit 46 cc
4	•• 737441000	737441000	2	retaining ring
B 5	•• 240353	538240353	1	piston ring
C 1	250084	538250084	1	cylinder/piston kit 49 cc
B 2	• 242366	538242366	1	gasket 0.8 mm
B 3	• 249711	538249711	1	piston kit 49 cc
4	•• 737441000	737441000	2	retaining ring
B 5	•• 503289010	503289010	1	piston ring

FIGURE 6				
C -	241268	538241268	1	carburettor WJY 183A
B 1	• 247955	538247955	1	repair kit K20 WYJ
A 2	•• 247956	538247956	1	gasket kit D20 WYJ
C 3	• 225834	538225834	1	primer
C 4	• 247957	538247957	1	valve
C 5	• 247958	538247958	1	spring
C 6	• 247962	538247962	1	pumping body
C 7	• 247961	538247961	1	valve
C 8	• 247959	538247959	1	jet

A=ALTA ROTAZIONE
 B=MEDIA ROTAZIONE
 C=ALTA ROTAZIONE
 NUOVI CODICI

A=HIGH MOVING
 B=MEDIUM MOVING
 C=SLOW MOVING
 NEW P. NUMBERS

A=HAUTE DEMANDE
 B=MOYENNE DEMANDE
 C=BASSE DEMANDE
 NOUVELLES REFERENCES

A=GROBE NACHFRAGE
 B=MITTELMAESSIGE
 C=WENIGE NACHFRAGE
 NEU CODEX