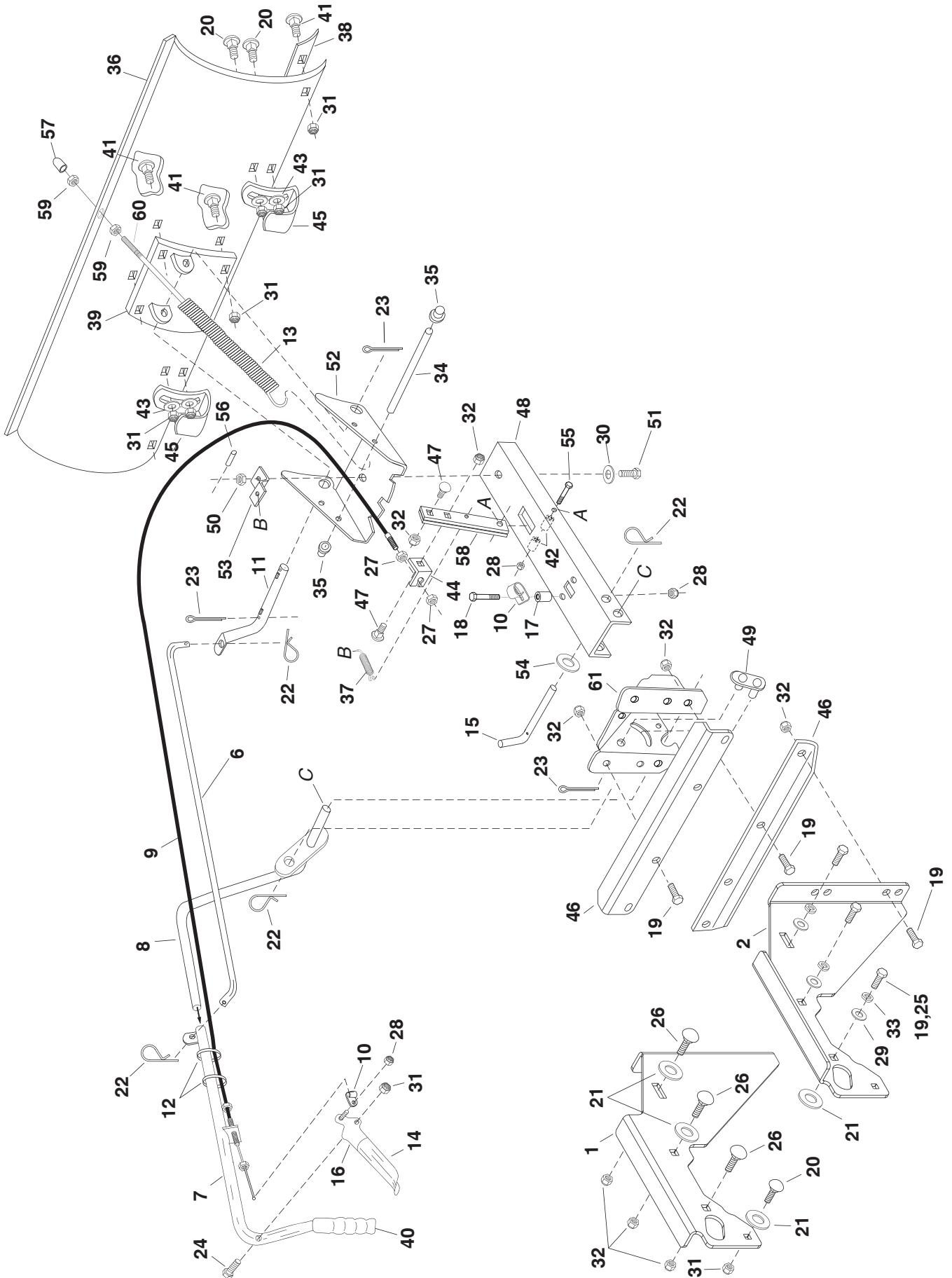


**SNOW BLADE (MODEL 45-0429-669 - 48", 544 92 17-01)**



**SNOW BLADE (MODEL 45-0429-669 - 48", 544 92 17-01)**

REF NO	PART NO.	DESCRIPTION	QTY	REF NO	PART NO.	DESCRIPTION	QTY
1	501 33 06-01	Hanger Bracket LH	1	44	501 33 35-01	Cable Mount Bracket	1
2	501 33 07-01	Hanger Bracket RH	1	45	501 33 36-01	Skid Shoe	2
6	501 33 08-01	Blade Pivot Rod	1	46	501 33 37-01	Angle Support Bracket	2
7	501 33 09-01	Lift Handle Tube Assy.	1	47	501 33 38-01	3/8-16 X 1 1/4 Carriage Bolt	2
8	501 33 10-01	Lift Handle Rod Assy.	1	48	501 33 39-01	Push Channel	1
9	501 33 11-01	Control Cable Assy.	1	49	501 33 40-01	Lift Link Assembly	1
10	501 33 12-01	Cable End Fitting	2	50	501 33 41-01	1/2-12 Hex Lock Nut	1
11	501 33 13-01	Blade Pivot Shaft	1	51	501 33 42-01	Special Pivot Bolt	1
12	501 33 14-01	Plastic Tie	2	52	501 33 43-01	Plate Pivot 7Ga.	1
13	501 33 15-01	Blade Adjust Spring	1	53	501 33 44-01	Spring Mount Bracket	1
14	501 33 16-01	Plastic Grip	1	54	501 33 45-01	Washer	1
15	501 33 17-01	Channel Pivot Pin	1	55	501 33 46-01	1/4-20 x 3 1/4 Hex Bolt Gr 5	1
16	501 33 18-01	Release Grip Assy.	1	56	501 33 47-01	1/4 x 1 Spring Pin	1
17	501 33 19-01	Spacer	1	57	501 33 48-01	Plastic Cap	1
18	725 23 78-71	1/4-20 x 1 1/2 Hex Bolt	1	58	501 33 49-01	Angle Lock Bar	2
19	874 78 06-16	3/8-16 x 1 Hex Bolt	14	59	731 23 20-01	3/8-16 Hex Nut	2
20	872 11 05-08	5/16-18 x 1 Carriage Bolt	6	60	501 33 50-01	3/8-16 x 3 1/2 Hex Bolt	1
21	501 33 20-01	1/2" Washer (Large)	6	61	501 33 51-01	Pivot Support Bracket	1
22	531 00 46-37	Small Hairpin 3/32	4	Not in list	501 33 52-01	Owners Manual	1
23	721 61 83-01	1/8" x 1 1/4 Cotter Pin	3				
24	501 33 21-01	5/16-18 x 1 1/2 Hex Bolt	1				
25	501 33 22-01	3/8 x 1 Hex Bolt Thd Forming	6				
26	501 33 23-01	3/8-16 x 1 Carriage Bolt	6				
27	501 33 24-01	Hex Jam Nut 5/16-24 Thread	2				
28	531 00 81-64	1/4 Nylock Hex Nut	3				
29	734 11 72-01	3/8 Std Washer	6				
30	501 33 25-01	Flat Washer 1/2	1				
31	501 33 26-01	5/16-18 Nylock Nut	13				
32	501 33 27-01	3/8 Nylock Hex Nut	16				
33	735 11 73-01	3/8 Lock Washer	6				
34	501 33 28-01	Spring Mount Rod	1				
35	531 00 28-40	3/8 Palnut	2				
36	501 33 29-01	48" Blade	1				
37	501 33 30-01	Angle Lock Spring	1				
38	501 33 31-01	48" Wear Plate	1				
39	501 33 32-01	Reinforcement Plate Assembly	1				
40	501 33 33-01	Grip Handle	1				
41	872 14 05-06	5/16-18 x 3/4 Carriage Bolt	6				
42	501 33 34-01	Spacer .28 ID x 1	2				
43	734 11 64-01	5/16 Washer	4				