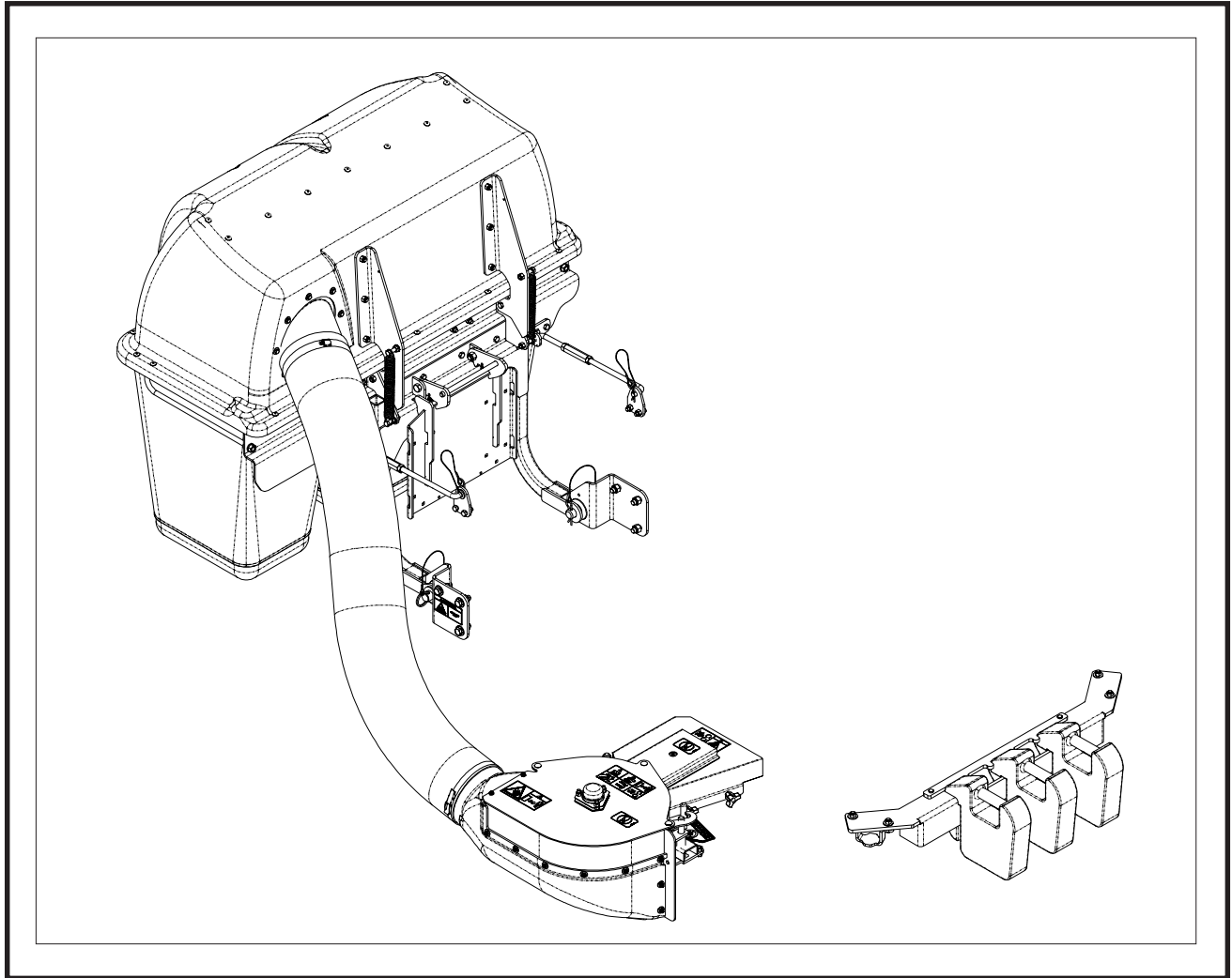


YAZOO/KEES



Collection System

Operators Manual
Parts Manual

Models: CS9
CS13

Please read these instructions carefully and make sure you understand them before using the machine.

MANUAL NO. 111315 REV 02 (03/31/05)

INDEX

Operators Guide

Features and Controls	4
General Information	5
Safety Procedures	5
Unpacking Instructions	7
Assembly Instructions	7
Collection System	7
Blower/Drive Kit	11

Operating the Collection System	14
--	-----------

Maintenance and Service Instructions

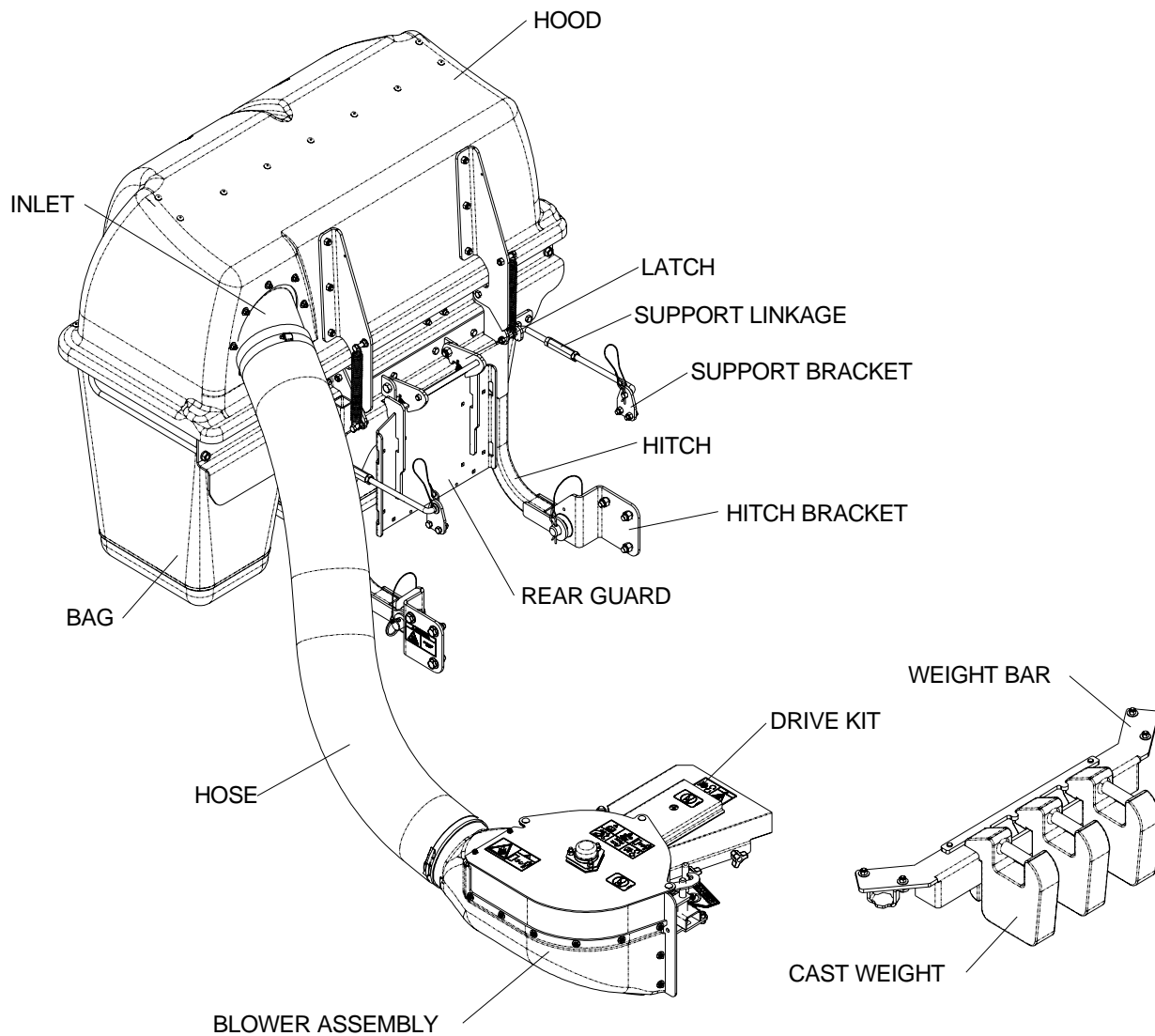
Transport	15
Cleaning and Washing	15
Storage	15
Preventative Maintenance Schedule	15
Caring for Vacuum Hoses	16
Cleaning Poly Mesh	16
Caring for Bags	16
Troubleshooting Guide	17

Replacement Parts

Hood Assembly	18
Hitch Assembly	20
Blower Assembly	22
Weight Kit (Model CS13)	24
Weight Kit (Model CS9)	25
Mounting Kit (Model CS13)	26
Mounting Kit (Model CS9)	28
Bag Assembly	30
Drive Kit (48" Deck)	31
Drive Kit (52" Deck)	32
Drive Kit (61" Deck)	33

<p>WARNING: Engine exhaust, some of its constituents, and certain vehicle components contain or emit chemicals known to the State of California to cause cancer and birth defects or other reproductive harm.</p>
--

FEATURES & CONTROLS



NOTE: Your Front Weight Bar may look different from those shown in this diagram.

SAFETY RULES

General Information

This manual will assist you in the safe operation and proper maintenance of your Husqvarna equipment. Read it thoroughly before attempting to operate the machine. Call your dealer or Husqvarna if additional information is required.

The following safety symbols are used throughout the manual to alert you to information about unsafe actions or situations:



DANGER indicates immediate hazards that may result in severe injury or death.



WARNING indicates unsafe actions or situations that may cause severe injury, death, and/or major equipment or property damage.



CAUTION indicates unsafe actions or situations that may cause injury and/or minor equipment or property damage.

This equipment should not be modified without the manufacturer's prior written authorization. Doing so may not only affect the equipments' performance and durability, but also create safety hazards for the operator and the surroundings. Warranty will be void if changes are made to the equipment without the manufacturer's prior written authorization.

Safety Procedures

1 - Training:

- Read the Operator's manual. If the operator(s) or mechanic(s) can not read English it is the owner's responsibility to explain this material to them.
- Become familiar with the safe operation of the equipment, operator's controls, and safety signs.
- All operators and mechanics should be trained. The owner is responsible for training the users.
- Never let children or untrained people operate or service the equipment. Local regulations may restrict the age of the operator.
- The owner/user can prevent and is responsible for accidents or injuries occurring to themselves, other people, and/or property.

2 - Preparation:

- Wear appropriate clothing including hard hat, safety glasses and ear protection. Long hair, loose clothing or jewelry may get tangled in moving parts.
- Inspect the area where the equipment is to be used and remove all objects such as rocks, toys and wire which can be thrown by the machine.
- Use extra care when handling gasoline and other fuels. They are flammable and vapors are explosive. Use only an approved container. Never remove gas cap or add fuel with engine running. Allow engine to cool before refueling. Do not smoke while fueling or operating equipment. Never refuel or drain the machine indoors.
- Check that operator's controls, safety switches, hoses, and shields are securely attached and functioning properly. Do not operate unless they are functioning properly.

SAFETY RULES

3 - Operation

- Never run an engine in an enclosed area.
- Only operate in good light, keeping away from holes and hidden hazards.
- Slow down and use extra care on hillsides. Make turns gradually and at slow speed. Do not operate across the sides of slopes. Operate up and down slopes only. Do not operate on steep slopes.
- Turf conditions can affect the machine's stability. Do not operate on wet grass where traction may be reduced.
- Do not change the engine governor setting or overspeed the engine.
- Stop equipment and inspect vacuum impeller and hoses after striking objects or if an abnormal vibration occurs. Make necessary repairs before resuming operations.
- Look behind and down before backing up to ensure a clear path.
- Slow down and use caution when making turns and crossing roads and sidewalks. Stop vacuum and mower blades if not mowing.
- Do not operate machine under the influence of alcohol or drugs.

- Use care when loading or unloading the machine into a trailer or truck.
- Use care when approaching blind corners, shrubs, trees, or other objects that may obscure vision.

4 - Maintenance and Storage:

- Stop engine and disconnect spark plug wire. Wait for all movement to stop before adjusting, cleaning, or repairing.
- Clean grass and debris from muffler and engine to help prevent fires. Clean up oil or fuel spillage.
- Let engine cool before storing and do not store near sparks or open flame.
- Shut off fuel while storing. Do not store fuel near flames or drain indoors.
- Never allow untrained personnel to service machine.
- Keep hands and feet away from moving parts. If possible, do not make adjustments with the engine running.
- Keep all parts in good working condition and all hardware tightened. Replace all worn or damaged decals.

ASSEMBLY

Unpacking Instructions

1. Cut plastic tie securing the hitch to the crate top.
2. Remove the top of the crate.
3. Remove the plastic bag.
4. Remove the hose.
5. Remove the sides and ends of the crate.
6. Remove the mounting kit box from the corner of the crate.
7. Cut the two plastic ties that secure the hitch assembly to the pallet. Remove the hitch assembly.
8. Cut the two plastic ties that secure the back of the hood, and the two that secure the front of the hood. Remove the hood assembly.
9. Cut and two plastic ties that secure the weight bar to the pallet. Remove the weight bar.
10. Cut the two plastic ties that secure the blower assembly to the pallet. Remove the blower assembly.
11. Remove the 1 x 4 that secures the cast weights to the pallet. Remove the weights.

Assembly Instructions

Collection System

Tools Required:

Ratchet	(2) 3/4" Wrench
Torque Wrench	3/4" Socket
1/2" Wrench	Flat Screw Driver
1/2" Socket	5/32" Allen Wrench
9/16" Wrench	Hacksaw
9/16" Socket	11/32" Drill Bit
5/8" Socket	Drill

1. Open the mounting kit box and remove all of the components.
2. Place the support bracket on the frame and secure with (2) 990563, 3/8 x 1 bolts and (2) 976979, 3/8 nyloc nuts. Figure 1.
3. Place the hitch brackets on the frame and secure with (3) 990622, 1/2 x 1 1/4 bolts and (3) 101331, 1/2 nyloc nuts. Figure 1.

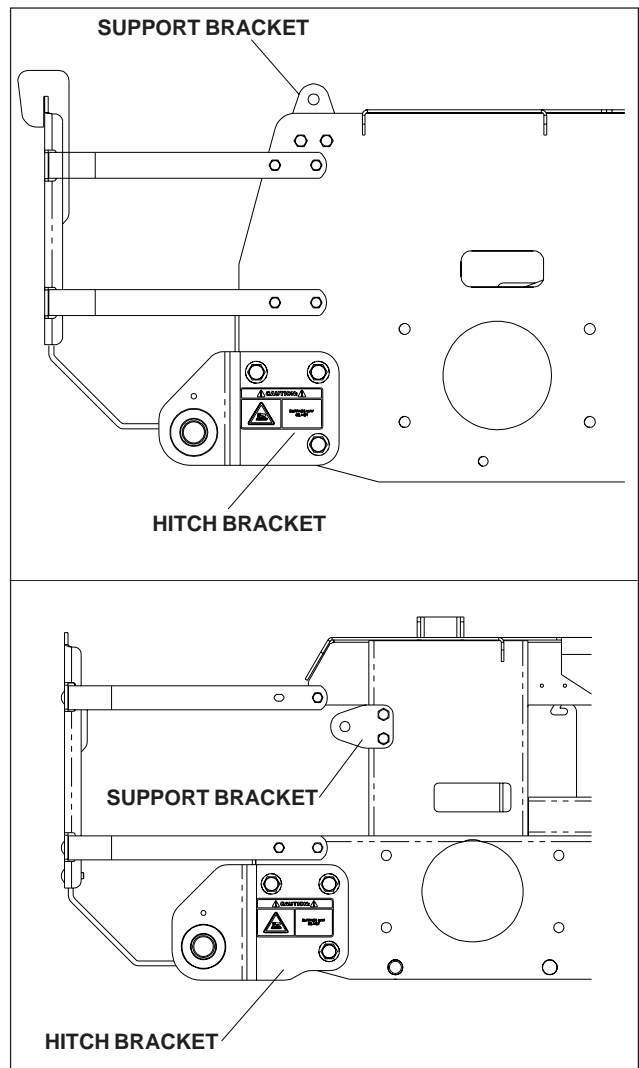


FIGURE 1

ASSEMBLY

4. Remove the (10) 5/16 carriage bolts that secure the standard rear guard to the straps and skid plates. Remove the standard rear guard. Replace with the collection rear guard, and secure with the carriage bolts that were just removed. Figure 2.

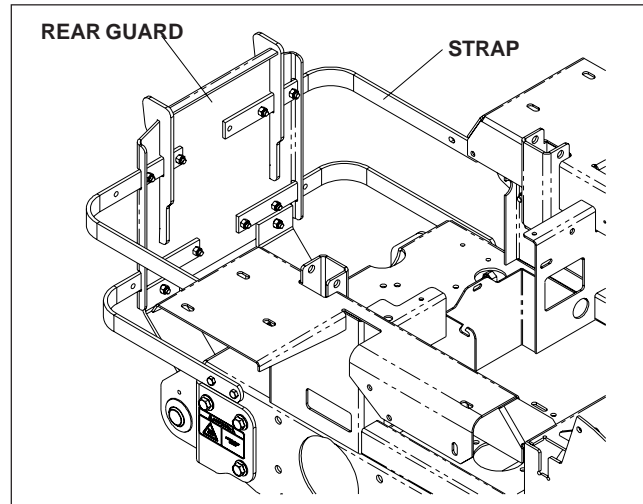


FIGURE 2

5. Place the hitch assembly on the ground behind the mower. Place the (2) hitch pins thru the hitch and the hitch brackets. Secure the hitch pins with the (2) hairpins that are secured with the (2) lanyards. Figure 3.

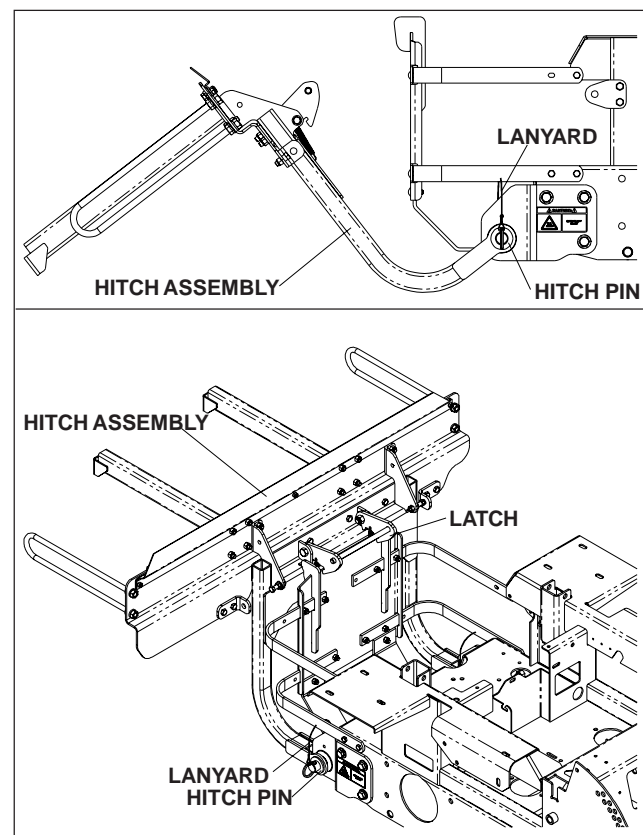


FIGURE 3

6. Move to the rear of the hitch assembly and pick it up towards the rear guard. The latch will hook over the top of the rear guard. Figure 3.

ASSEMBLY

7. Place the hood assembly on to the hitch assembly. Place both hood hinges between the upper hitch mounts on the hitch assembly. Be sure that the rubber seal is on the inside of the hood. Place the (2) friction washers between the hood hinge and the upper hitch mount. Place (2) 990563, 3/8 x 1 bolt thru the hinge and mount. Secure with (2) 976979, 3/8 nyloc nut. Figure 4.
8. Open the hood and secure the (2) springs to the bolts on the hood assembly and the hitch assembly. Figure 4.

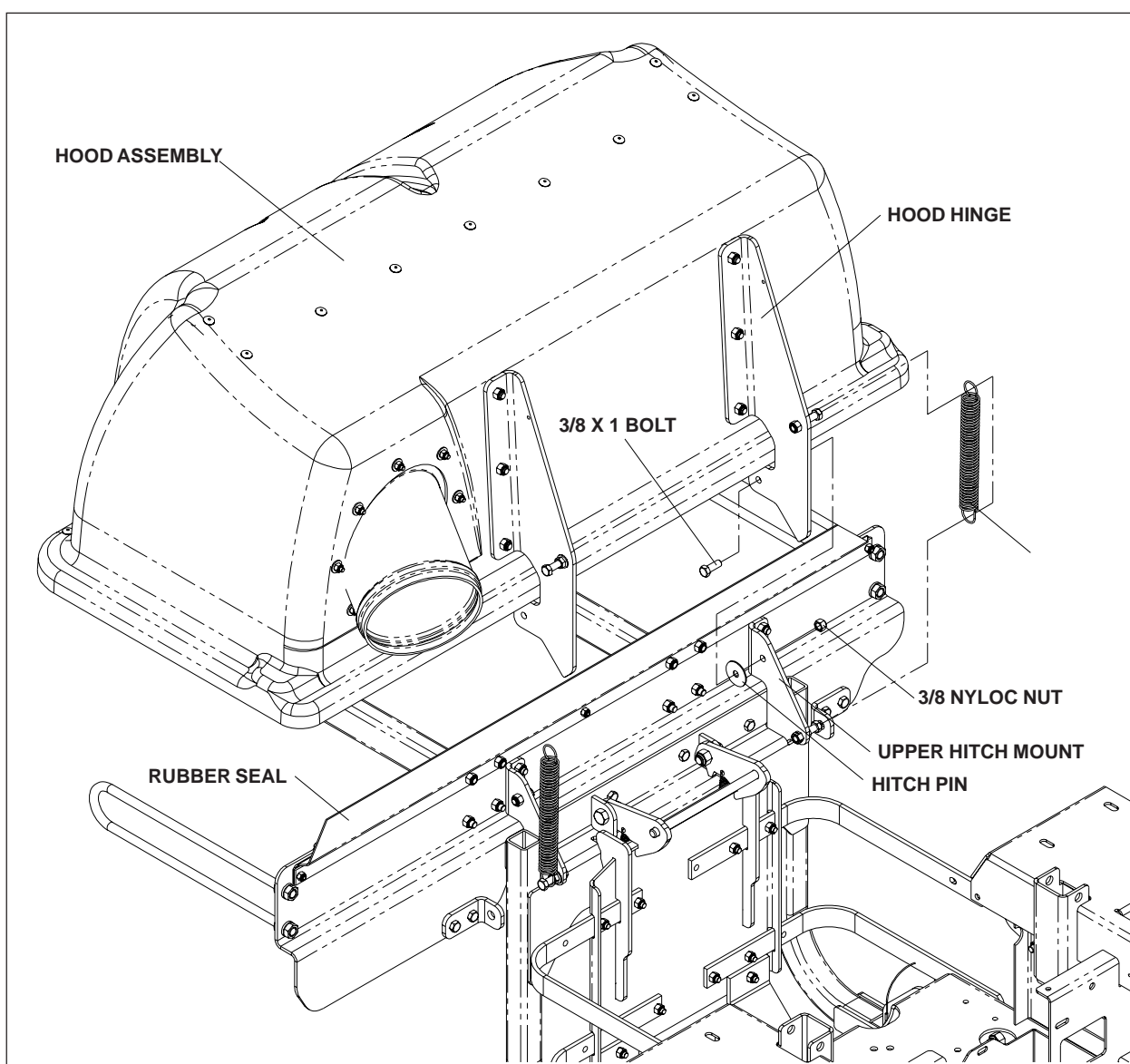


FIGURE 4

ASSEMBLY

9. With the hood open, secure the (3) bags in place. The back of the bags will hook over the mounting tabs on the hitch assembly. Figure 5.
10. Close the hood, and latch the draw latch over the draw latch keeper on the hitch assembly. Figure 5.

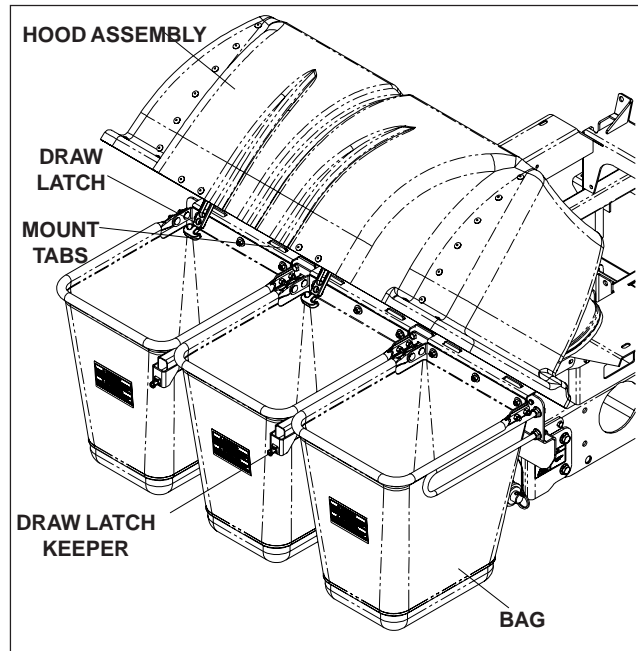


FIGURE 5

11. Install the (2) linkage assemblies to the (2) support brackets on hitch assembly and the (2) support brackets on the frame. The shorter linkage connects to the support bracket on the hitch assembly. Figure 6.

NOTE: The linkage assemblies may need to be adjusted. Using (2) 3/4" wrenches, loosen the 1/2" Jam Nut on the longer linkage. Turn the turnbuckle in the appropriate direction to shorten the linkage assembly. Turn until the slop is taken out of the linkages. Tighten the jam nut against the turnbuckle.

12. Secure the front of the linkage assemblies using the hairpin secured by the lanyard. Secure the rear of the linkages using the (2) 990654, cotter pins provided. Figure 6.
13. Place the hose on the inlet and secure with the hose clamp.
14. Install the muffler elbow and clamp to the muffler outlet. Angle discharge directly to the right side of the unit. Mid Size units with vertical muffler only.

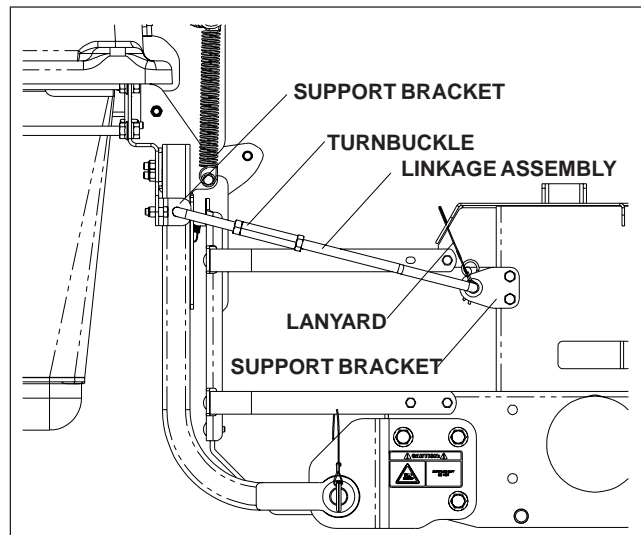


FIGURE 6

ASSEMBLY

Blower/Drive Kit

1. Open the drive kit box and remove all of the components.
2. Place the deck in the lowest cutting height.
3. Remove the right side belt shield from the deck.
4. Remove the deck belt from the right side pulley.
5. Remove the deck pulley, but keep the hardware at hand for re-installation.

Note: When the deck pulley is removed, the spindle can fall out of the cutter housing assembly. Be sure to secure the bottom of the spindle so that this does not happen.

6. Place the double pulley on the cutter housing spindle using the original washers, but replacing the 7/16" bolt with the longer 7/16 x 2 1/2" bolt with zerk. Torque to 45 ft/lbs.
7. Re-install the deck belt.
8. If any weld beads or the edge of the deck top protrude past the right end surface of the deck, these must be ground back to allow the blower assembly to fit up flush against the end of the deck.
9. Using a 5/32" allen wrench, remove the two 111229 1/4" x 5/8" screws from the pulley cover and remove the cover to expose the pulley. Figure 7.
10. Loosen the 3/8" nyloc nut on the belt guide, and rotate the guide out of the way.
11. Install the belt on the pulley.

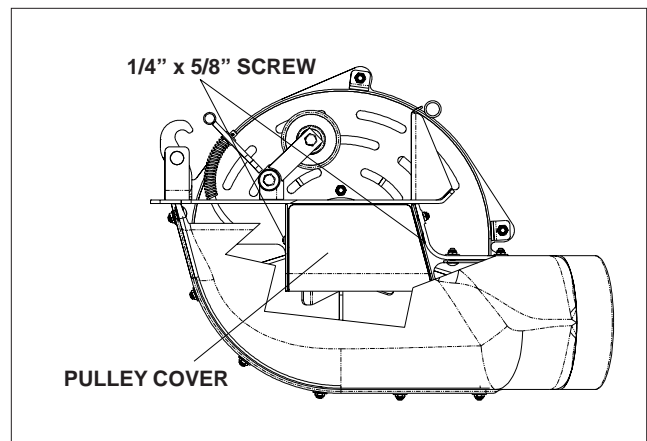


FIGURE 7

ASSEMBLY

12. Position the belt guide approximately 1/8" away from the belt. Re-tighten the 3/8" nut.
13. Re-install the pulley cover and 1/4" x 5/8" screws.
14. Place the blower pin weldments in the tubes on the blower assembly. Figure 8.
15. Rest the blower assembly on the end and align the deck opening and the blower opening. Clamp the front of the blower assembly to the deck and adjust the pin weldments so they clear all portions of the deck and blower.
16. Rotate idler arm to the side and secure with the idler keeper. Install the belt on the deck pulley. Figure 8.
17. Check belt clearance between the discharge mounting tabs. The blower may have to be slid forward or back for the belt to clear the chute tabs.
18. Place the belt shield on the deck and check for clearances between the deck pins and the shield.
19. Mark the 4 holes in the pin weldments and center punch. Drill the four holes with an 11/32" drill bit. Note: Make sure the blower is tight against the deck before drilling the holes.
20. Secure the deck pin weldments to the deck with the four 990134 3/8" x 3/4" bolts and four 990546 3/8" nyloc nuts. Place the bolts from the bottom up.
21. Release the idler arm from the idler keeper and install the belt shield.
22. Install the new Danger decal on the front right corner of the deck so it is in plane sight.
23. Install the stops on the deck stop pins at the rear of the deck. (48" decks only.)
24. Install the hose on the blower housing and secure with the over center hose clamp.

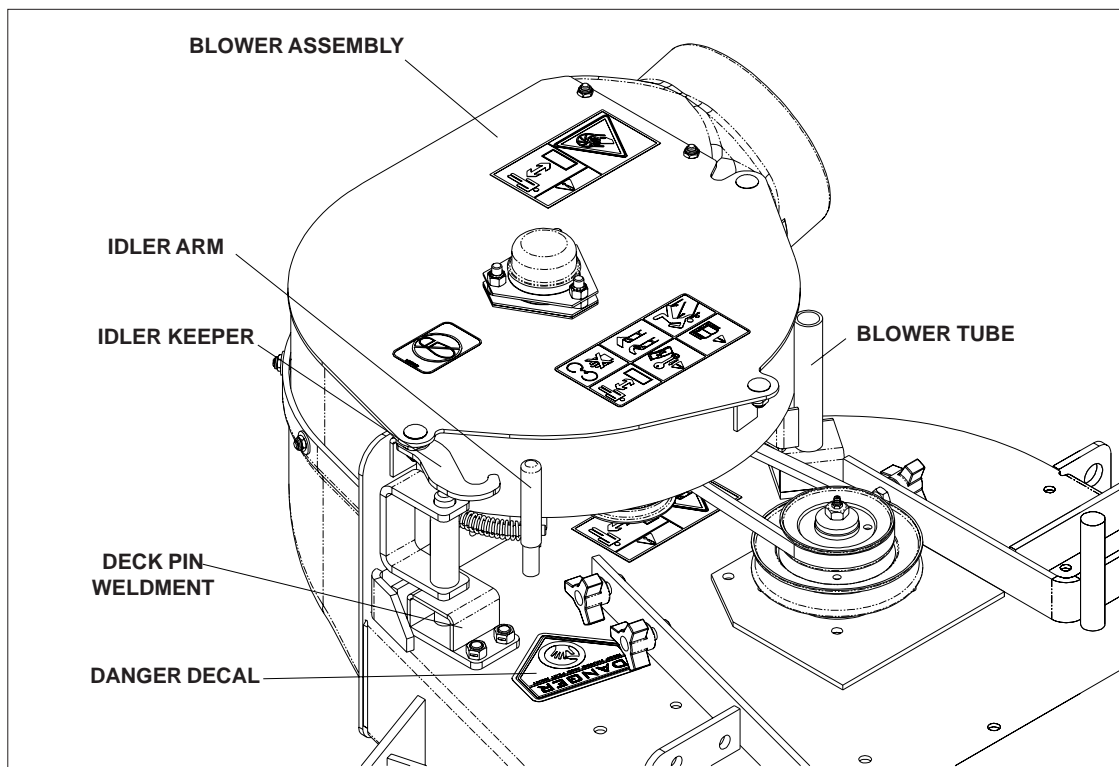


FIGURE 8

OPERATION

Operating the Collection System

1. **NEVER USE THE COLLECTION SYSTEM WITHOUT THE BLOWER ASSEMBLY AND HOSES SECURELY ATTACHED.**
2. Make sure hoses are connected at both ends. Inspect hoses prior to each use.
3. Do not use the unit on slopes greater than 10 degrees.
4. The mower must be running in order to vacuum debris through the mower deck.
5. In heavy grass it may be necessary to mow and collect at a slower ground speed.
6. Never attempt to unclog the collection system until the mower's engine has been shut off and all moving parts have come to a complete stop.
7. Do not stand behind the vent at the rear of the collection system due to the potential for small pieces of blowing debris to escape through the vent.
8. Wear eye and ear protection.

SERVICE AND MAINTENANCE

Transport



WARNING

The collection system bags must be completely empty or removed while driving forward onto a trailer. If the mower must be loaded onto a trailer while there is still debris in the container, the mower must be backed up onto the trailer to avoid tipping.

For best results, clean poly mesh inside hood regularly. Instructions for doing this can be found in the Service section of this manual.

Cleaning and Washing

Regular cleaning, washing, and lubricating will prolong the service of the machine.

NOTE: Use care with power washers to avoid damage to decals. Limit direct spray on these items.

DO NOT EXCEED 1000 PSI WATER PRESSURE FOR CLEANING.

Storage

1. Clean machine.
2. Cover all scratches with touch-up paint.
3. Covered or indoor storage is recommended.

Preventative Maintenance Schedule

Item	Before Each Use	Every 5 Hours	Every 25 Hours	Every 50 Hours
Inspect/Clean Poly Mesh	X	X		
Check/Tighten Nuts & Bolts	X			
Check/Tighten Hoses	X			
Turn Hose End to End			X	
Rotate Hose				X
Clean Machine				X
Inspect Bags	X			

SERVICE AND MAINTENANCE

Caring For Hoses

1. Inspect hoses before each use. If hoses have excessive wear, tears, or punctures, replace immediately.
2. To prolong the life of the hose, periodically rotate hose and turn hose end to end. Refer to Preventative Maintenance Schedule in this manual.
3. Avoid twists and sharp turns in the hoses, as they will increase wear on the hoses.
4. Avoid dragging the lower hose along the sides of buildings or other hard surfaces.

Caring For Bags

Inspect the bags before each use. If bags have excessive wear, tears or punctures, replace immediately.

Cleaning Instructions

NOTE: Under normal usage the bag material is subject to deterioration and wear.

Cleaning Poly Mesh

The poly mesh on the collection system is located inside the container hood. For best results, clean poly mesh regularly.

Cleaning Instructions

1. Shut off engine.
2. Release the two (2) rubber latches under the rear of the hood. Open hood and brush debris off of both sides.
3. Close hood and re-latch.

DO NOT USE THE COLLECTION SYSTEM WITHOUT POLY MESH SECURELY IN PLACE.

SERVICE AND MAINTENANCE

Troubleshooting Guide

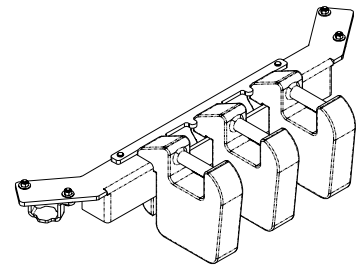
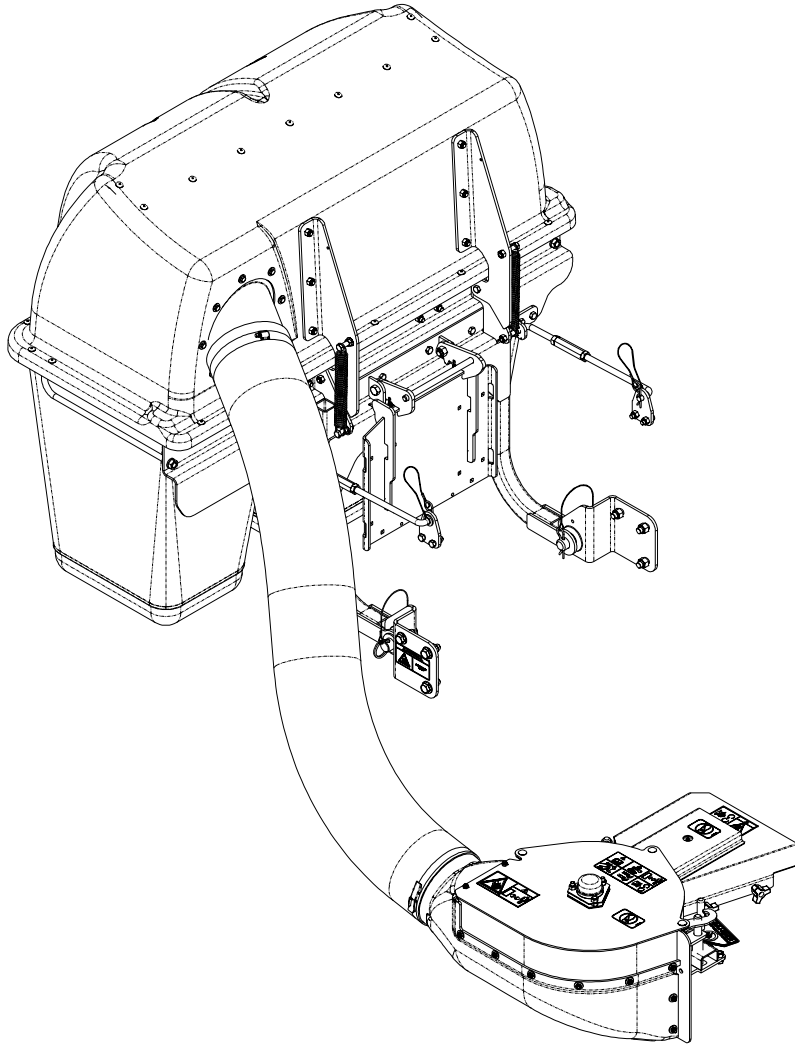


DANGER

Before servicing unit, wait for all moving parts to come to a complete stop. Turn engine off and remove the spark plug wire.

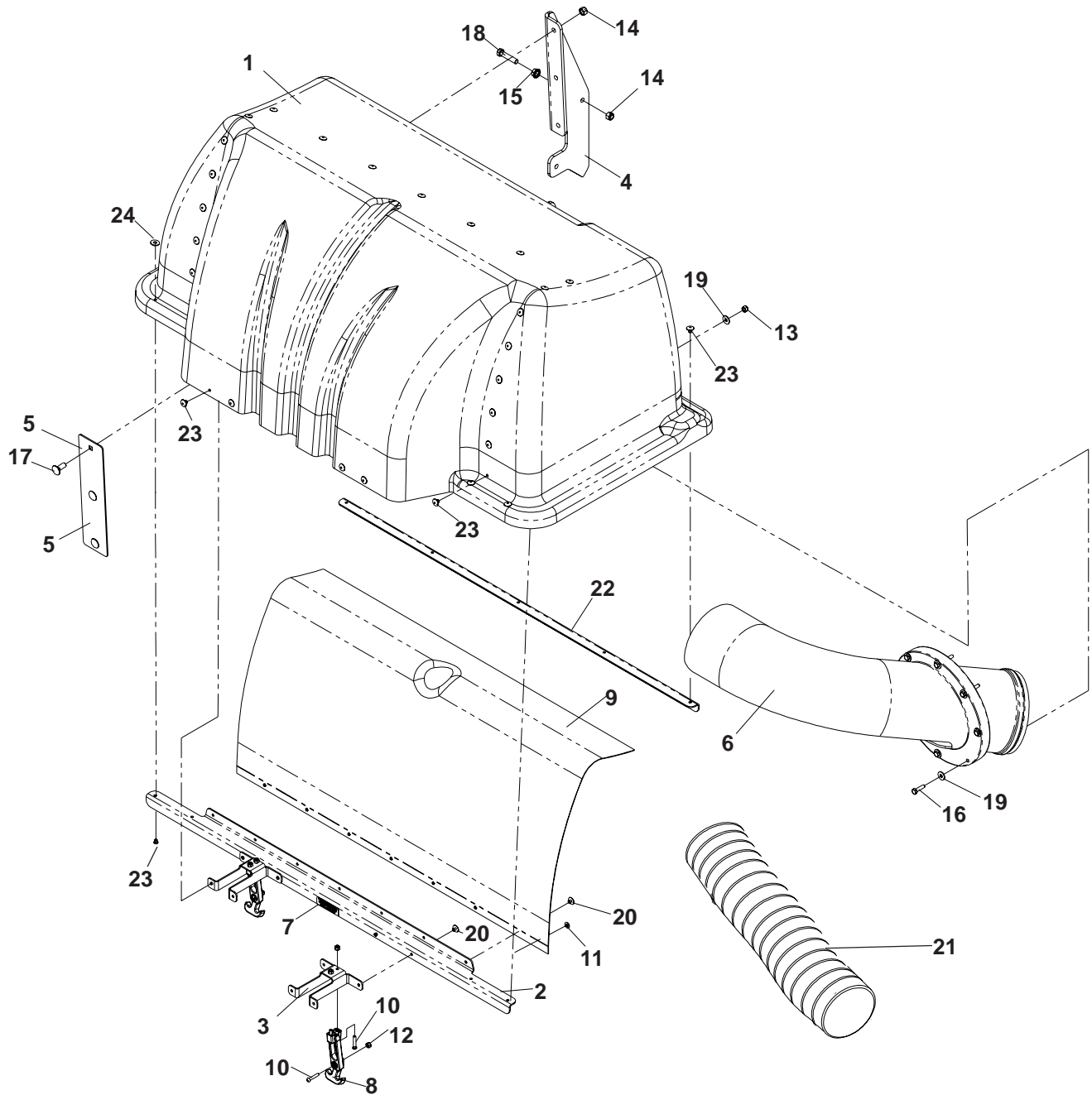
PROBLEM	POSSIBLE CAUSE	CORRECTION
Loss of Vacuum.	1. Blower, hose or hood inlet clogged. 2. Bags full. 3. Fan blades bent or broken. 4. Poly mesh plugged.	1. Remove hose and clean inlet. 2. Inspect and empty. 3. Replace/repair impeller. 4. Clean poly mesh.
Unusual vibration or noise.	1. Solid object jammed in unit. 2. Loose or missing bolts on unit. 3. Bent or damaged fan.	1. Check and remove any obstruction. 2. Tighten or replace bolts. 3. Replace/repair impeller.
Unit difficult to close.	1. Obstructions keeping door from completely closing. 2. Hood hinge bolts too tight.	1. Clear obstructions. 2. Loosen bolts.

SPINDLE DRIVE ASSEMBLY



NOTE: Your Front Weight Bar may look different from those shown in this diagram.

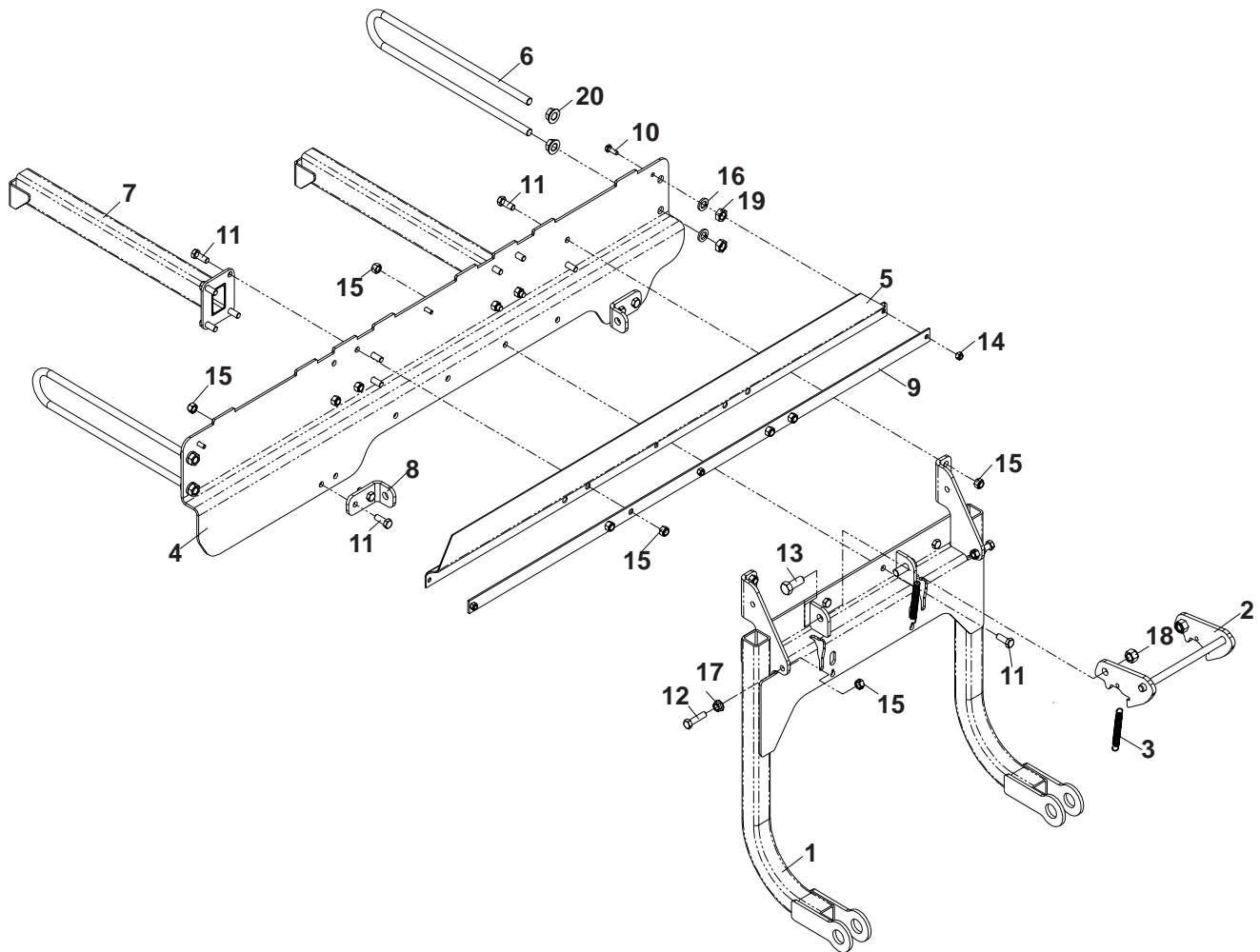
HOOD ASSEMBLY



HOOD ASSEMBLY

ITEM	PART NO.	QTY	DESCRIPTION
1	111172	1	HOOD
2	111174	1	HOOD SUPPORT
3	111175	2	SUPPORT, DRAW LATCH
4	111177	2	HOOD HINGE
5	111181	2	MOUNT PLATE
6	111182	1	INLET TUBE
7	111260	1	DECAL, VENTILATION
8	200478	2	DRAW LATCH, FLEXIBLE T-HANDLE
9	111183	1	MESH, POLY DIAMOND
10	111186	6	SCREW, #10-24 X 1 1/8, MACH.
11	105408	21	WASHER, #10
12	976977	6	NUT, #10-24, NYLOC
13	976978	8	NUT, 1/4C, NYLOC
14	976979	8	NUT, 3/8C, NYLOC
15	990613	2	NUT, 3/8C
16	991003	8	HCS, 1/4-20 X 1 3/4
17	990645	6	RHSNB, 3/8-16 X 1
18	990730	2	HCS, 3/8-16 X 1 3/4
19	990598	16	WASHER, 1/4
20	102744	11	RIVET, 3/16 X 1/4
21	111287	1	HOSE, 58", CS13
.....	111314	1	HOSE, 54", CS9
22	111339	1	HOOD SUPPORT, REAR
23	200684	30	RIVET, 1/4 STAVEX
24	110033	8	WASHER, #10

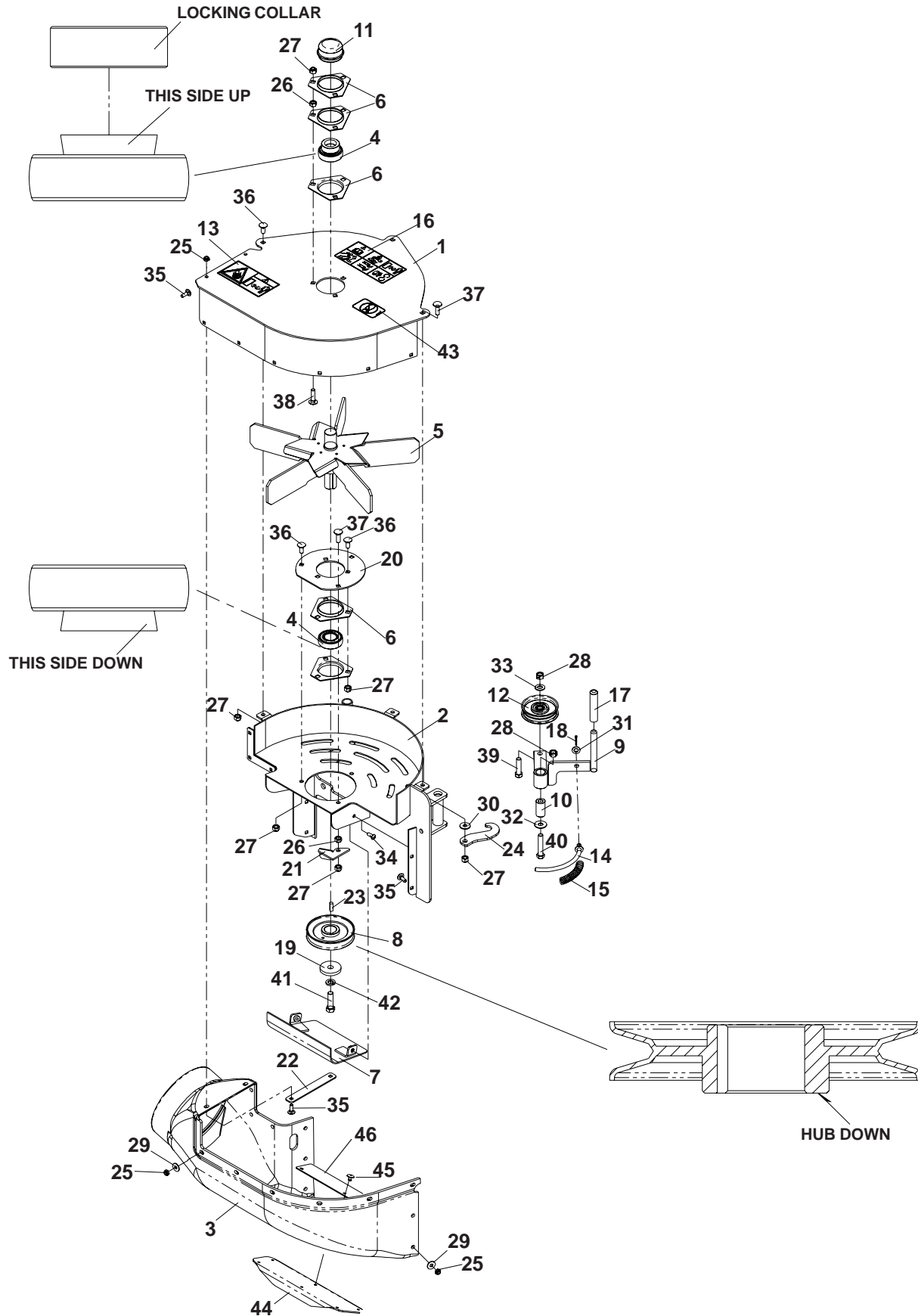
HITCH ASSEMBLY



HITCH ASSEMBLY

ITEM	PART NO.	QTY	DESCRIPTION
1	111155	1	HITCH
2	111190	1	LATCH
3	977250	2	SPRING
4	111157	1	MOUNT Z BRACE
5	111167	1	SEAL, RUBBER
6	111158	2	SUPPORT, OUTER
7	111162	2	SUPPORT ARM
8	111267	2	BRACKET, SUPPORT
9	111171	1	SEAL STRAP
10	990580	3	HCS, 1/4-20 X 3/4
11	990563	20	HCS, 3/8-16 X 1
12	990655	2	HCS, 3/8-16 X 1 1/2
13	108369	2	HCS, 1/2-13 X 1 1/4
14	976978	3	NUT, 1/4C, NYLOC
15	976979	22	NUT, 3/8C, NYLOC
16	990254	4	WASHER, 1/2
17	990613	2	NUT, 3/8C
18	101331	2	NUT, 1/2C, NYLOC
19	990625	4	NUT, 1/2, JAM
20	111187	4	NUT, 1/2-13, WHIZLOCK

BLOWER ASSEMBLY

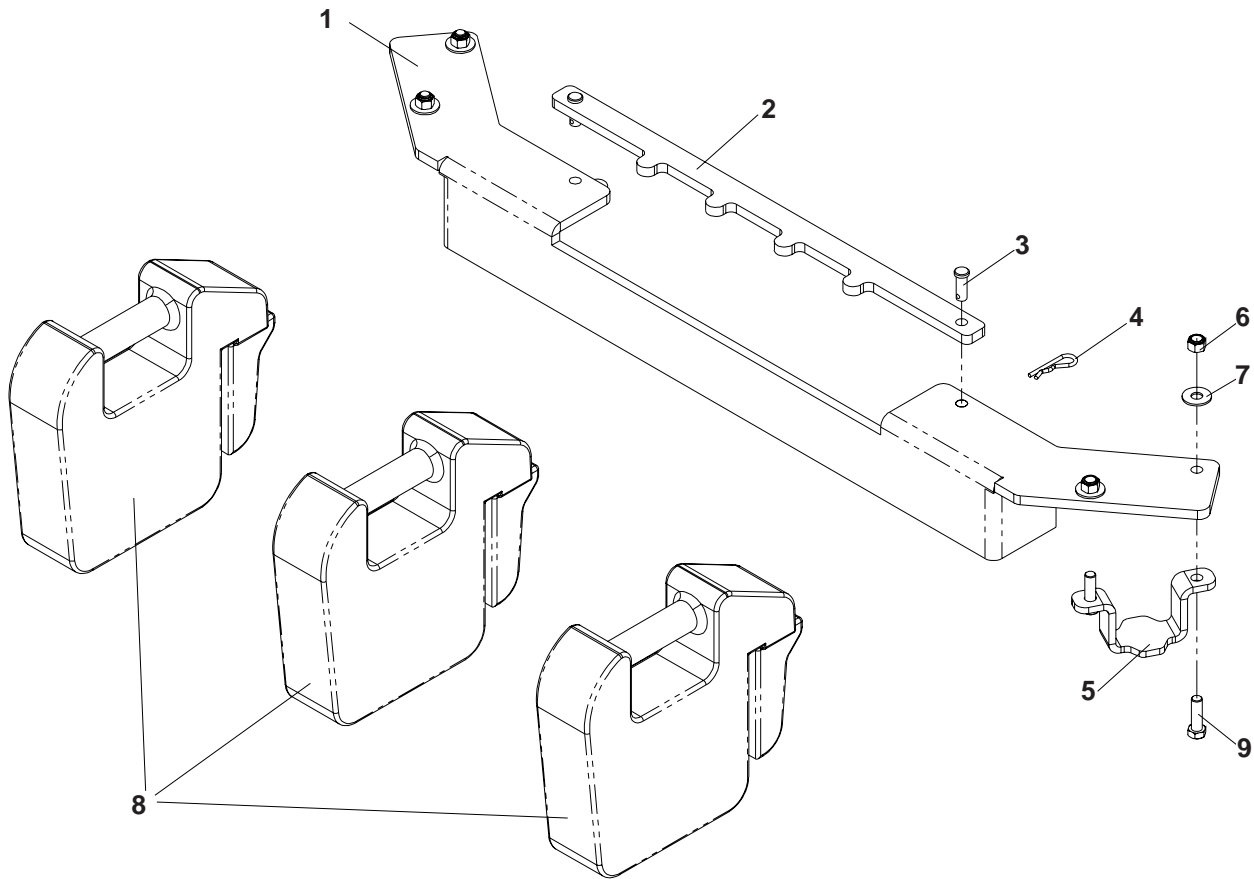


BLOWER ASSEMBLY

ITEM	PART NO.	QTY	DESCRIPTION
1	111331	1	FAN COVER W/DECALS
2	108941	1	BLOWER HOUSING
3	109900	1	LOWER HOUSING - PLASTIC
4	106786	2	BEARING
5	111332	1	FAN
6	102691	5	FLANGETTE
7	108301	1	COVER PLATE
8	106713	1	SHEAVE, 4"
9	106715	1	IDLER ARM
10	101836	1	SLEEVE BUSHING
11	102535	1	GREASE CAP
12	106721	1	IDLER
13	106741	1	DECAL, SEVERING
14	106801	1	SPRING ROD
15	106720	1	SPRING
16	105785	1	DECAL, WARNING
17	101050	1	VINYL GRIP
18	990037	1	PIN COTTER, 3/32 X 3/4
19	106504	1	HEAVY WASHER
20	106809	1	BEARING PLATE
21	106811	1	BELT GUIDE
22	106812	1	BACKING
23	102067	1	KEY, 1/4" SQ. X 3/4"
24	111303	1	IDLER ARM KEEPER
25	108120	16	NUT, 1/4C, THIN NYLOC
26	990196	4	NUT, 5/16C
27	990717	12	NUT, 5/16C, NYLOC
28	990546	2	NUT, 3/8C, CENTER LOCK
29	990598	14	WASHER, 1/4
30	990692	1	WASHER, 5/16
31	990188	1	WASHER, 5/16, SAE
32	990517	1	WASHER, 3/8
33	990122	1	WASHER, 3/8, SAE
34	111229	2	SCREW, 1/4-20 X 5/8, BTN SKT
35	990074	16	RHSNB, 1/4-20 X 3/4, GR2
36	990316	7	RHSNB, 5/16-18 X 3/4
37	990208	2	RHSNB, 5/16-18 X 1 GR5
38	100472	3	RHSNB, 5/16C X 1 1/4
39	990655	1	HCS, 3/8-16 X 1 1/2, GR5
40	990588	1	HCS, 3/8-16 X 2, GR5
41	100141	1	HCS, 7/16-20 X 1 1/2, GR5
42	990247	1	LOCKWASHER, 7/16
43	105743	1	DECAL, NO STEP
44	111340	1	BLOWER SUPPORT
45	102744	6	RIVET, 3/16 X 1/4
46	110058	1	PLATE, BLOWOUT

WEIGHT KIT

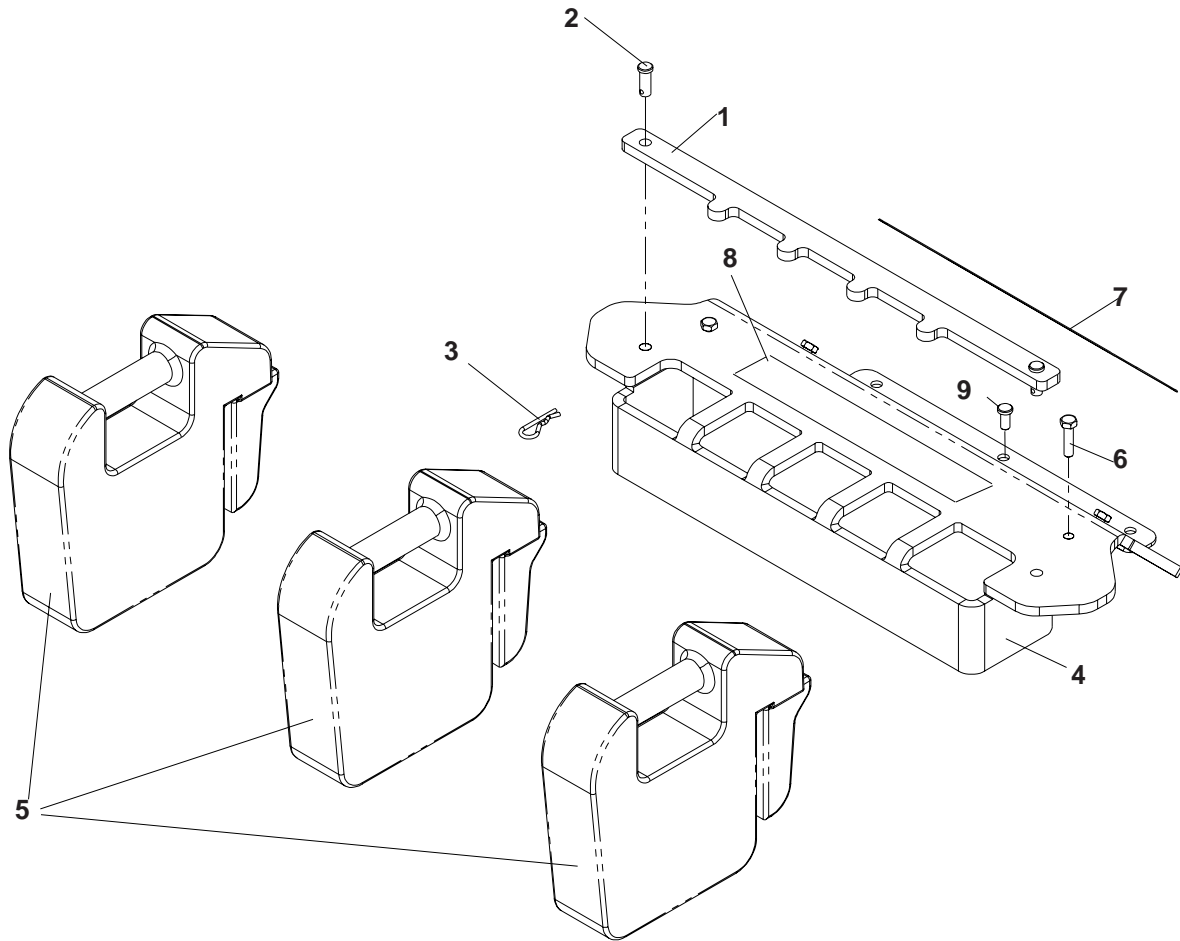
MODEL CS13



ITEM	PART NO.	QTY	DESCRIPTION
1	20255	1	WEIGHT BAR, FRONT
2	111313	1	HOLD DOWN, WEIGHT BAR
3	102049	2	CLEVIS PIN
4	108096	2	SPRING RETAINER
5	111259	2	WEIGHT KEEPER
6	976979	4	NUT, 3/8, NYLOC
7	990517	4	WASHER, 3/8
8	ER92531	3	CAST COUNTERWEIGHT
9	976941	4	HCS, 3/8-16 X 1 1/4, GR5

WEIGHT KIT

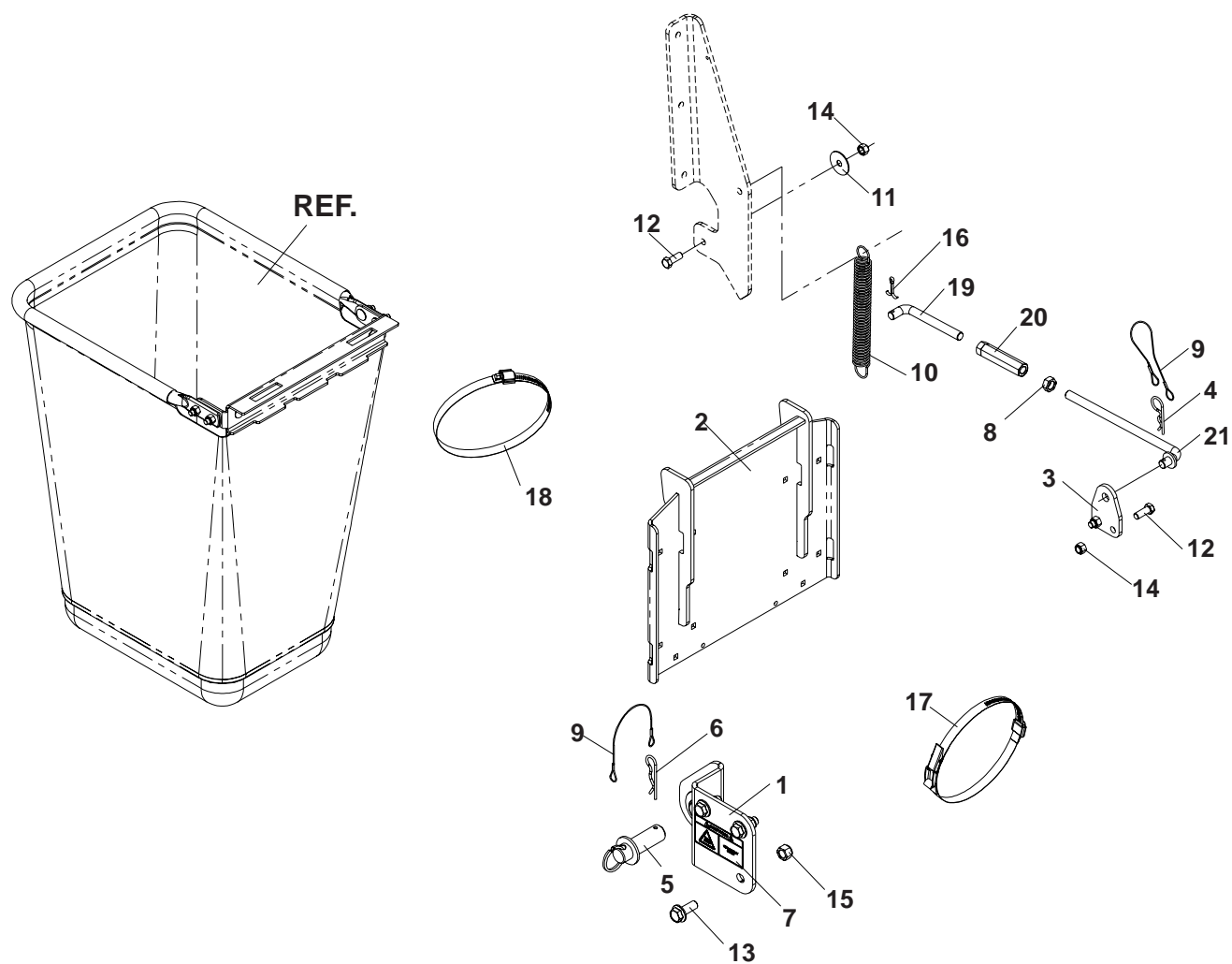
MODEL CS9



ITEM	PART NO.	QTY	DESCRIPTION
1	111313	1	HOLD DOWN, WEIGHT BAR
2	102049	2	CLEVIS PIN
3	108096	2	SPRING RETAINER
4	111336	1	WEIGHT BAR
5	ER92531	3	CAST COUNTERWEIGHT
6	990627	4	HCS, 5/16-18 X 1 1/4, GR5
7	977778	1	PAD, ABRASIVE
8	103420	1	DECAL, YAZOO/KEES
9	102587	3	BUMPER

MOUNTING KIT

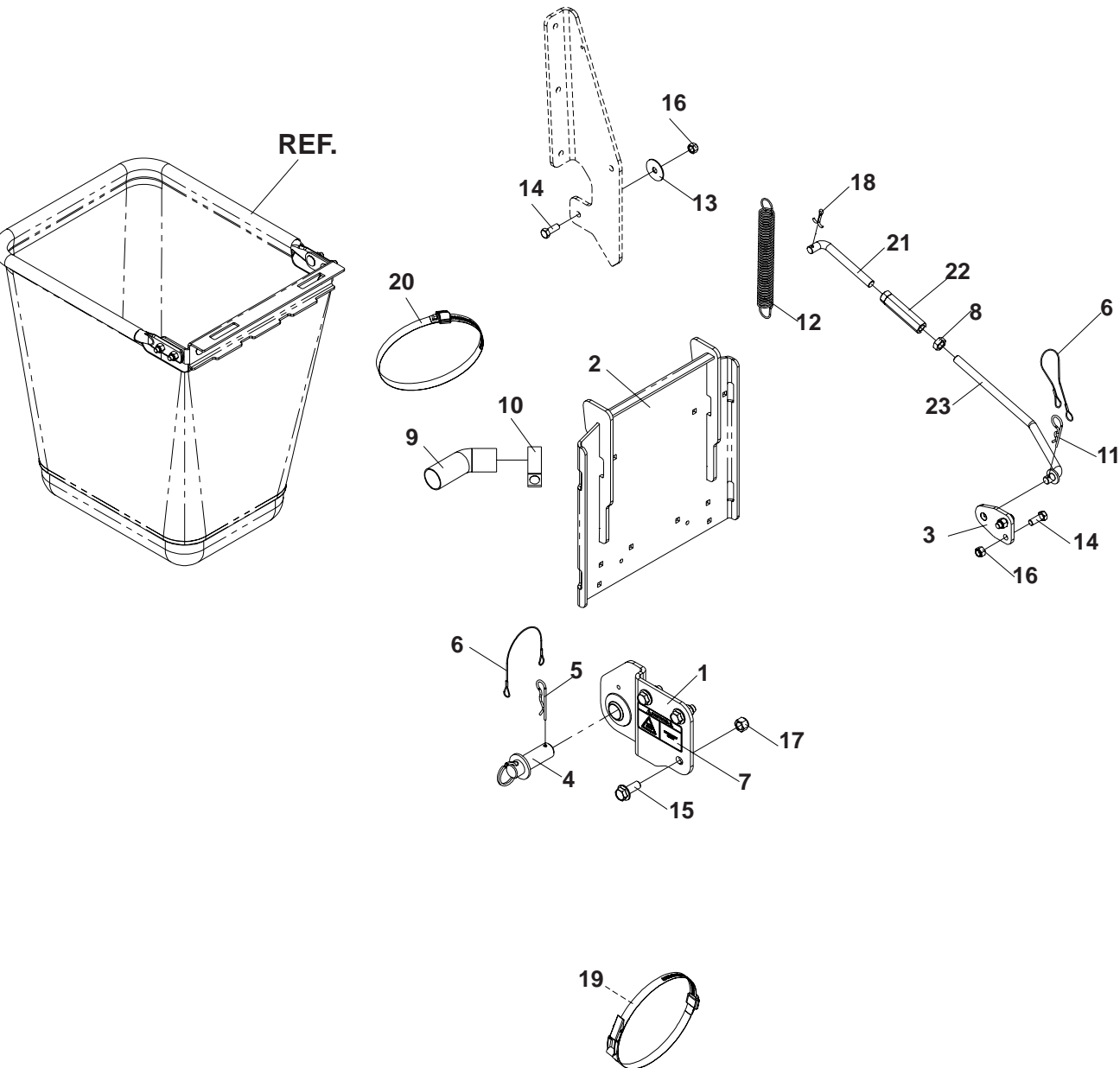
MODEL CS13



MOUNTING KIT

MODEL CS13

ITEM	PART NO.	QTY	DESCRIPTION
1	111322	1	HITCH BRACKET, RIGHT, W/DECAL
.....	111199	1	HITCH BRACKET, LEFT (NOT SHOWN)
2	111197	1	REAR GUARD
3	11215	2	SUPPORT BRACKET
4	976989	2	HAIRPIN #4
5	111206	2	HITCH PIN
6	111192	2	HAIRPIN
7	111212	1	DECAL, HOT SURFACE
8	108736	2	NUT, 1/2-20, HEX JAM
9	102563	4	LANYARD
10	111191	2	SPRING
11	102998	2	FRICTION WASHER
12	990563	6	HCS, 3/8-16 x 1, GR5
13	990622	6	HFS, 1/2-13 X 1 1/2
14	976979	6	NUT, 3/8C, NYLOC
15	101331	6	NUT, 1/2C, NYLOC
16	990654	2	COTTER PIN, 5/32 X 1 1/4
17	109901	1	OVER CENTER BAND
18	097076	1	HOSE CLAMP 6"-& 7"
19	111208	2	SUPPORT LINKAGE, LH
20	111207	2	TURNBUCKLE, 1/2"
21	111210	2	SUPPORT LINKAGE

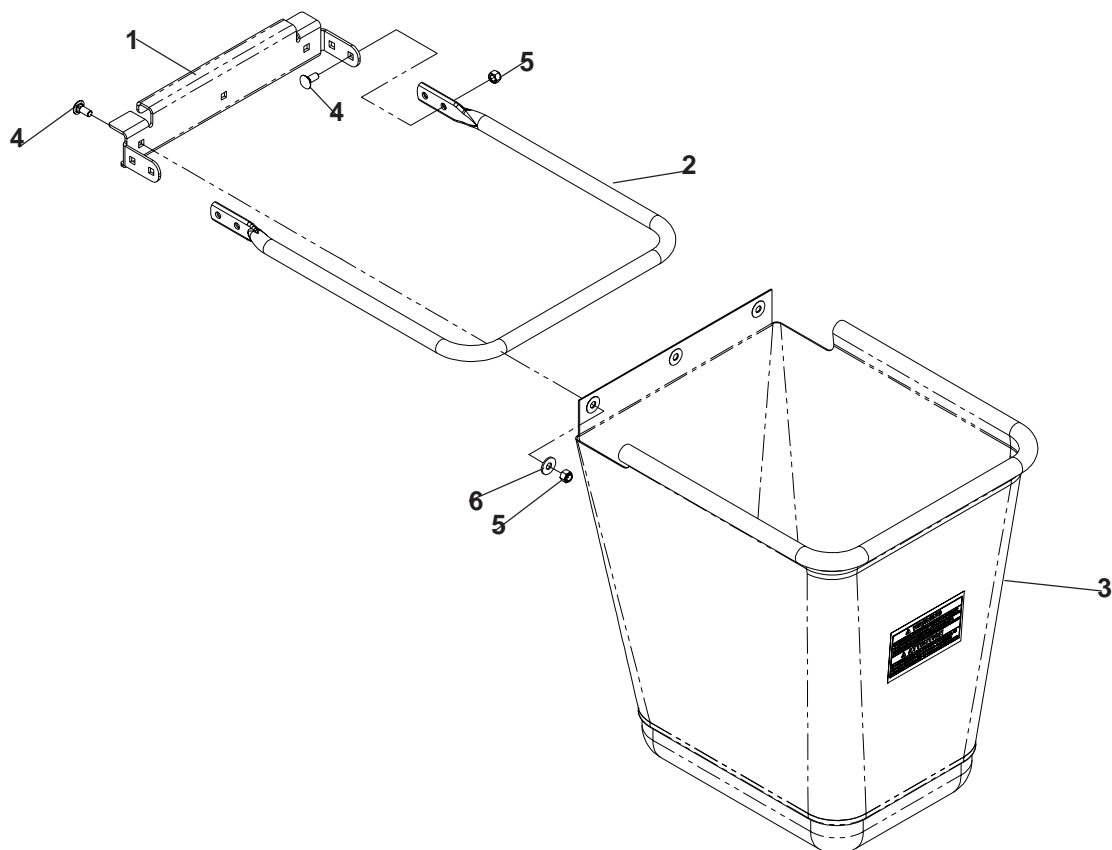


MOUNTING KIT

MODEL CS9

ITEM	PART NO.	QTY	DESCRIPTION
1	111294	1	HITCH BRACKET W/DECALS, RIGHT
.....	111203	1	HITCH BRACKET, LEFT (NOT SHOWN)
2	111195	1	REAR GUARD
3	111215	2	SUPPORT BRACKET
4	111206	2	HITCH PIN
5	111192	2	HAIRPIN
6	102563	4	LANYARD
7	111212	1	DECAL, HOT SURFACE
8	108736	2	NUT, 1/2-20, HEX JAM
9	111211	1	ELBOW, EXHAUST
10	101399	1	EXHAUST CLAMP
11	976989	2	HAIRPIN #4
12	111191	2	SPRING
13	102998	2	FRICTION WASHER
14	990563	6	HCS, 3/8-16 x 1, GR5
15	990622	6	HFS, 1/2-13 X 1 1/2
16	976979	6	NUT, 3/8C, NYLOC
17	101331	6	NUT, 1/2C, NYLOC
18	990654	2	COTTER PIN, 5/32 X 1 1/4
19	109901	1	OVER CENTER BAND
20	97076	1	HOSE CLAMP 6"-& 7"
21	111208	2	SUPPORT LINKAGE, LH
22	111207	2	TURNBUCKLE, 1/2"
23	111210	2	SUPPORT LINKAGE

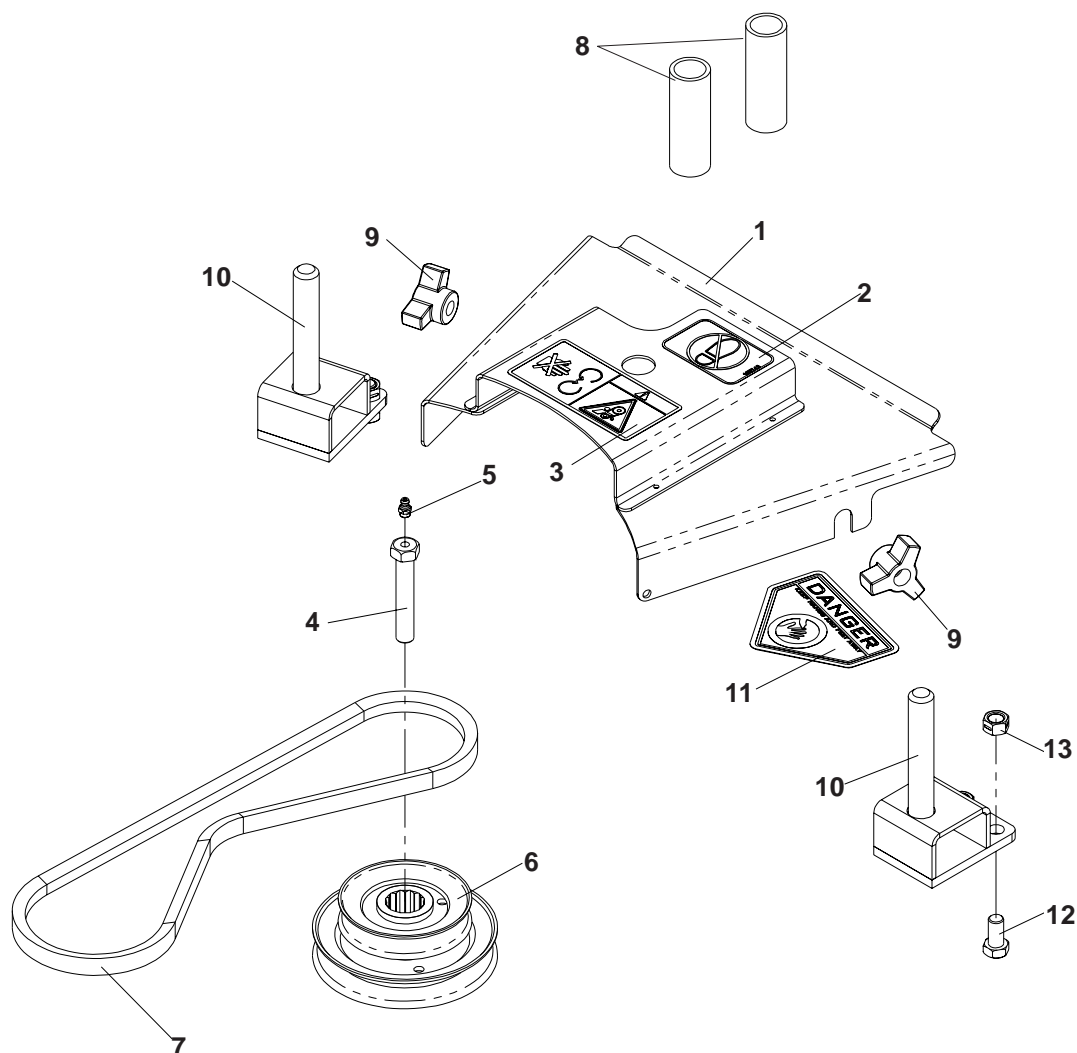
BAG ASSEMBLY



ITEM	PART NO.	QTY	DESCRIPTION
1	110063	1	HANGER, BAG
2	111166	1	TUBE, BAG FRAME
3	111168	1	BAG, LARGE, MODEL CS13
.....	111300	1	BAG, SMALL, MODEL CS9
4	990316	7	RHSNB, 5/16-18 X 5/8, GR5
5	990717	7	NUT, 5/16, NYLOC
6	990692	3	WASHER, 5/16

DRIVE KIT ASSEMBLY

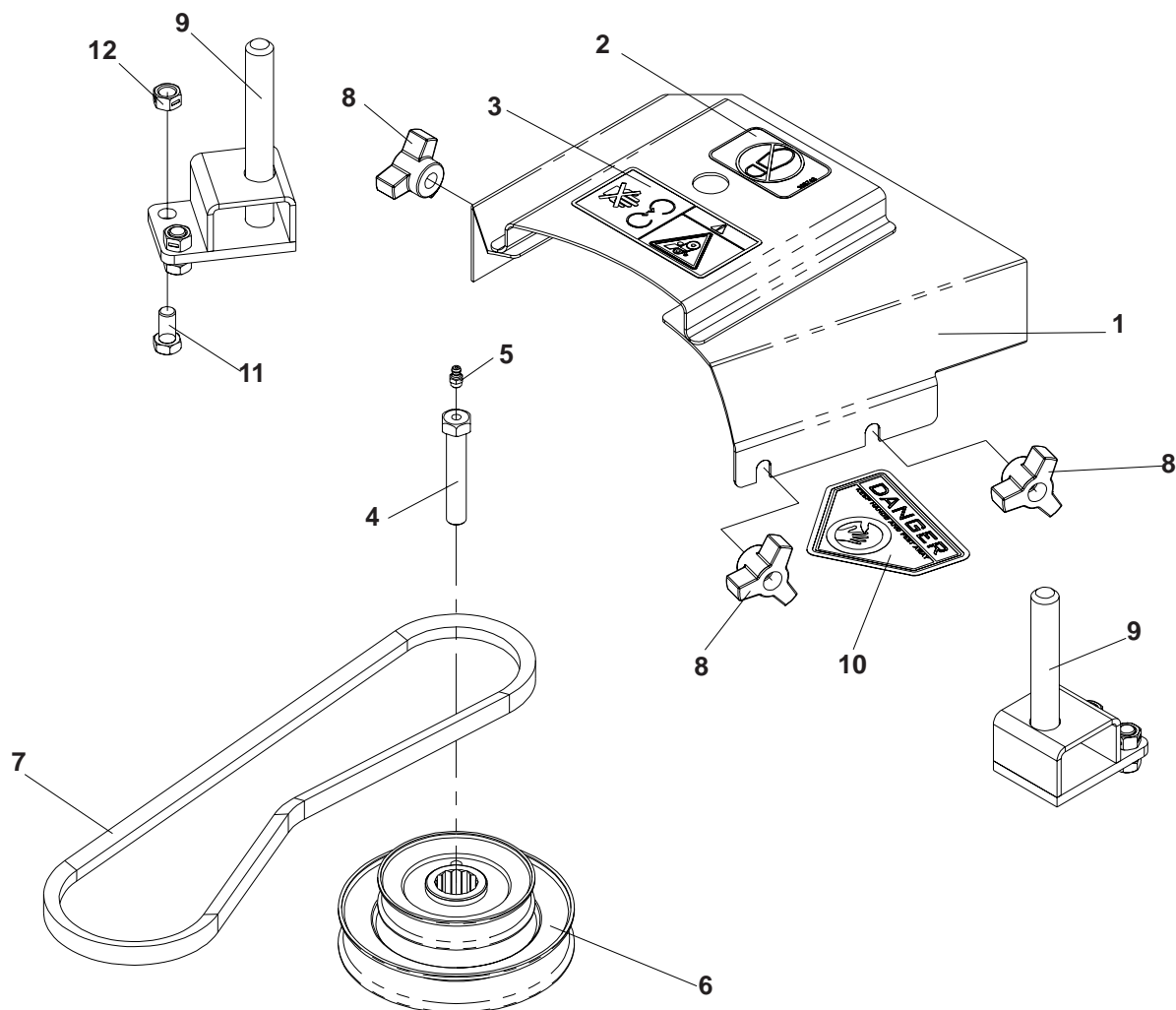
111295 - 48 INCH DECK



ITEM	PART NO.	QTY	DESCRIPTION
1	111254	1	SHIELD W/DECALS, 48"
2	105743	1	DECAL, NO STEP
3	105744	1	DECAL, DANGER BELT DRIVES
4	108951	1	HCS, 7/16-20 X 2 1/2, GR5, SPEC.
5	976998	1	ZERK
6	108946	1	PULLEY, DOUBLE, STACKED, 42/48
7	106724	1	BELT
8	106787	2	STOP
9	102070	2	KNOB, THREE PRONG
10	108944	2	BLOWER PIN, SM
11	913010	1	DECAL, CPSC
12	990134	4	HCS, 3/8-16 X 3/4, GR5
13	990546	4	NUT, 3/8C, CENTER LOCK

DRIVE KIT ASSEMBLY

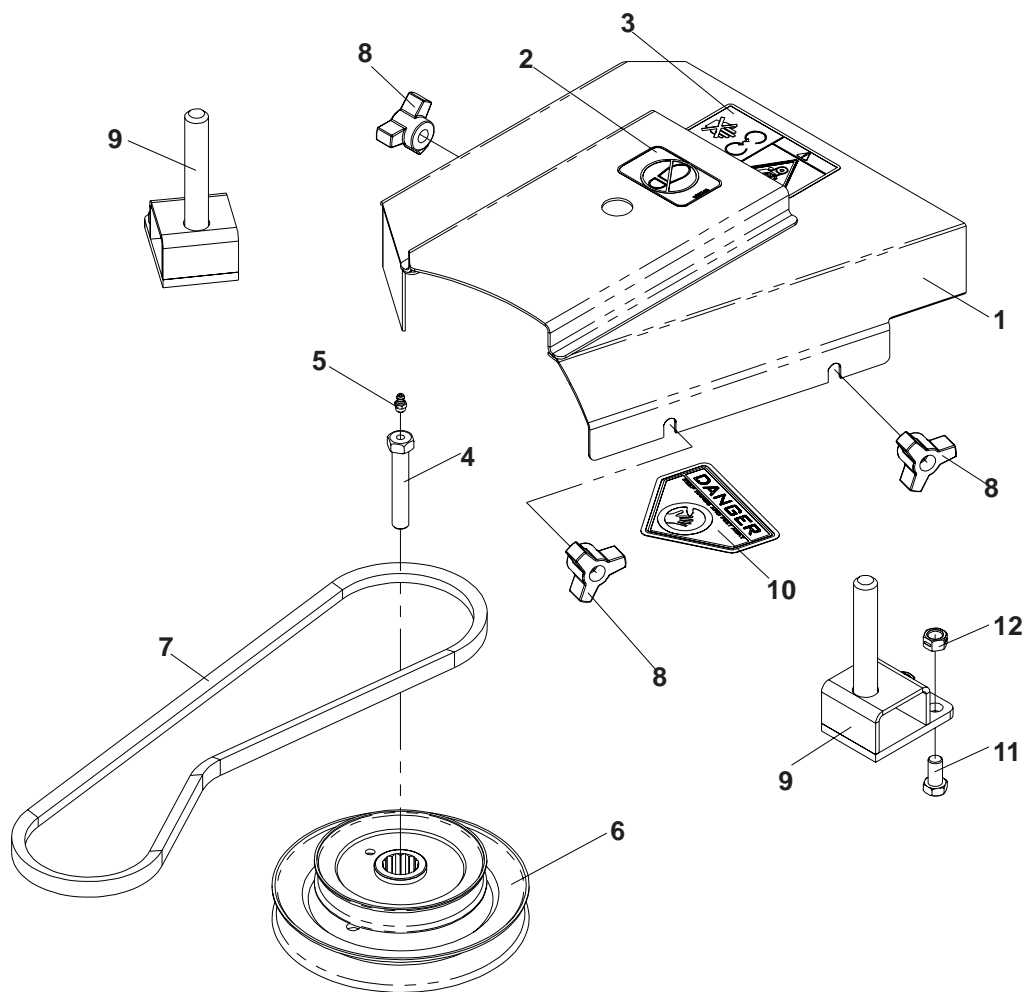
111296 - 52 INCH DECK



ITEM	PART NO.	QTY	DESCRIPTION
1	111268	1	SHIELD W/DECALS, 52"
2	105743	1	DECAL, NO STEP
3	105744	1	DECAL, DANGER BELT DRIVES
4	108951	1	HCS, 7/16-20 X 2 1/2, GR5, SPEC.
5	976998	1	ZERK
6	108947	1	PULLEY, DOUBLE, STACKED, 52"
7	106725	1	BELT
8	102070	3	KNOB, THREE PRONG
9	108944	2	BLOWER PIN, SM
10	913010	1	DECAL, CPSC
11	990134	4	HCS, 3/8-16 X 3/4, GR5
12	990546	4	NUT, 3/8C, CENTER LOCK

DRIVE KIT ASSEMBLY

111297 - 61 INCH DECK



ITEM	PART NO.	QTY	DESCRIPTION
1	111269	1	SHIELD W/DECALS, 61"
2	105743	1	DECAL, NO STEP
3	105744	1	DECAL, DANGER BELT DRIVES
4	108951	1	HCS, 7/16-20 X 2 1/2, GR5, SPEC.
5	976998	1	ZERK
6	108948	1	PULLEY, DOUBLE, STACKED, 61"
7	106726	1	BELT
8	102070	3	KNOB, THREE PRONG
9	108944	2	BLOWER PIN, SM
10	913010	1	DECAL, CPSC
11	990134	4	HCS, 3/8-16 X 3/4, GR5
12	990546	4	NUT, 3/8C, CENTER LOCK

YAZOO / KEES