



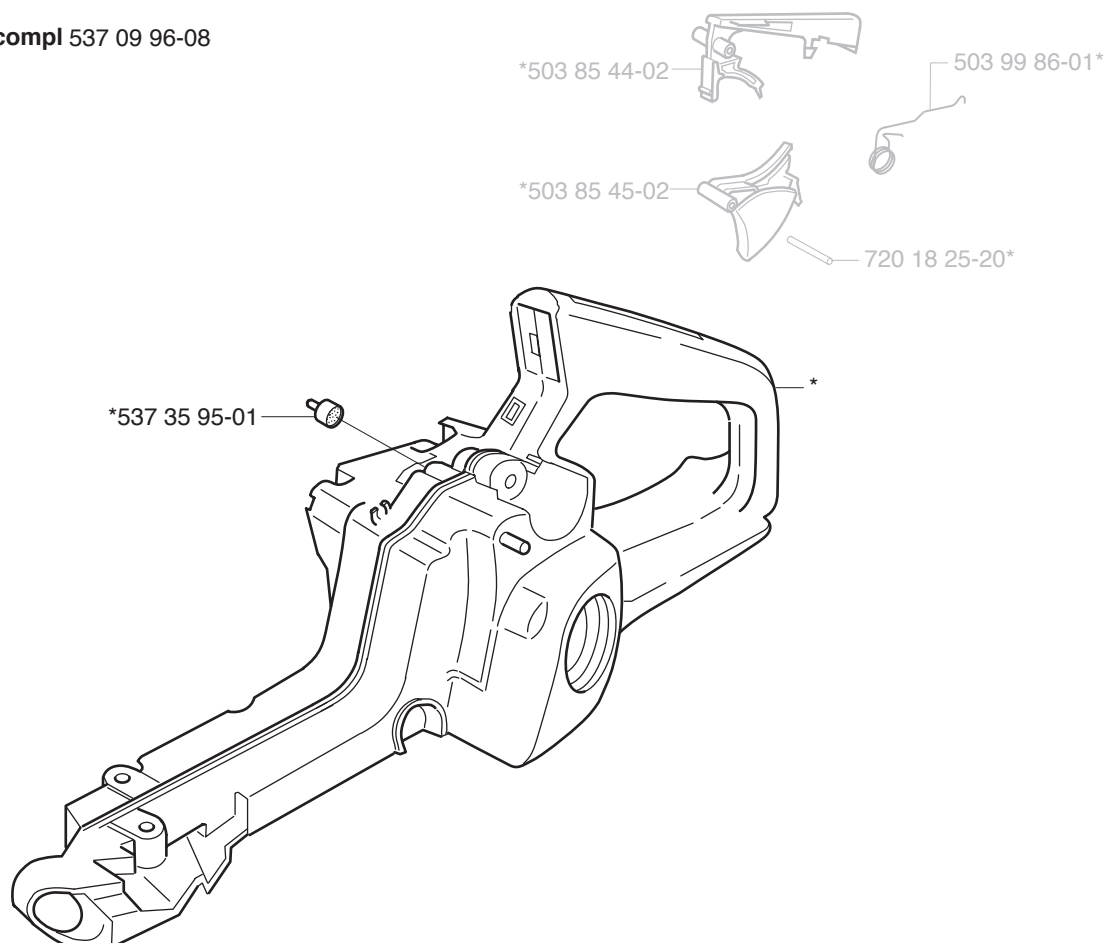
SB, CS2141, CS2145, CS2147, CS2150, CS2152, Tank valve, 2005-03

A tank valve with a two-way function has been introduced on the above models.

The two-way valve has the following properties:

- Has a controlled opening pressure outwards and inwards that prevents overpressure and underpressure arising in the fuel tank, which can affect the engine. This also impedes fuel leakage.
- Has improved function with regard to clogging compared with "earlier" tank venting designs.
- Has improved function with regard to freezing in winter conditions compared with "earlier" tank venting designs.
- Opening pressure outwards 10 – 45 kPa (0.1-0.45 bar).
- Opening pressure inwards (vacuum) max. 7 kPa (0.07 bar).

*compl 537 09 96-08





English 2(3)

To safeguard the operation of the tank valve a Mylar pump diaphragm has been fitted to the carburettor. This is included in the set of carburettor seals with part no. 537 38 03-01 and should be used as a spare part on saws with two-way valves.

New part no.	Description	Excl. part no.	Remark
503 86 37-04	Fuel tank with accessories	503 86 37-72	
537 35 95-01	Tank venting		*
	Valve plug.	501 62 98-01	
	Filter plug.	503 60 04-01	
537 38 03-01	Set of carburettor seals	537 17 79-01	

* New spare part

Introduced from serial number:

Pump diaphragm im Mylar:	CS 2141	041200001
	CS 2145	041200001
	CS 2147	041200001
	CS 2150	041200001
	CS 2152	041200001

Tank valve	CS 2141	050700001
	CS 2145	050700001
	CS 2147	050700001
	CS 2150	050700001
	CS 2152	050700001

NOTE! Compressed air must not be used for cleaning or testing as this will destroy the component parts of the valve.

The following applies to check the function of the tank venting:

Opening pressure outwards:

1. Open the fuel cap and let the fuel cap remain off during the entire check. Empty the fuel from the tank.
2. Connect the pump, part no. 531 03 06-23 to the tank valve
3. Switch the pump to vacuum mode.
4. Pump 3 times.
5. The indicator should stop in between 10-45 kPa after pumping.

Opening pressure inwards:

1. Open the fuel cap and let the fuel cap remain off during the entire check. Empty the fuel from the tank.
2. Connect the pump, part no. 531 03 06-23 to the tank valve.
3. Switch the pump to pressure mode.
4. Pump 3 times.
5. The indicator should stop on max 7 kPa after pumping.

